

## **BG CHARADE — FEADSHIP**



**Builder:** FEADSHIP

**Year Built:** 1990

**Model:** Motor Yacht

**Price:** \$11,999,999 USD

**Location:** United States

**LOA:** 154' (46.94mm)

**Beam:** 28

**Max Draft:** 9' 7" (2.92mm)

**Cruise Speed:** 12 Knots Kts. (14 MPH)

**Max Speed:** 15.5 Knots Kts. (18 MPH)

Our experienced yacht broker, Andrey Shestakov, will help you choose and buy a yacht that best suits your needs **BG Charade — FEADSHIP** from **our catalogue**. Presently, at **Shestakov Yacht Sales Inc.**, we have a wide variety of yachts available on **our sale's list**. We also work in close contact with all the big **yacht manufacturers** from all over the world.

If you would like to buy a yacht **BG Charade — FEADSHIP** or would like help answering any questions concerning purchasing, selling or chartering a yacht, please call **+1(954)274-4435**

# TABLE OF CONTENTS

TABLE OF CONTENTS	2
SPECIFICATIONS	4
Overview	4
Basic Information	4
Dimensions	4
Speed, Capacities and Weight	4
Accommodations	4
Hull and Deck Information	4
Engine Information	5
PHOTOS	6
3	6
2	6
5	6
4	6
6	6
7	6
9	7
8	7
11	7
10	7
14	7
13	7
15	8
16	8
17	8
18	8
19	8
20	8

21	9
22	9
23	9
24	9
25	9
26	9
27	10
28	10
29a	10
29b	10
29c	10
29d	10
30	11
31	11
32	11
33	11
<b>CONTACTS</b>	<b>12</b>
Contact details	12
Telephones	12
Office hours	12
Address	12

---

# SPECIFICATIONS

---

## Overview

---

1990 Feadship 154

## Basic Information

---

**Category:** Motor Yacht

**Sub Category:** Motor Yacht

**Model Year:** 1990

**Year Built:** 1990

**Country:** United States

## Dimensions

---

**LOA:** 154' (46.94mm)

**Beam:** 28

**Max Draft:** 9' 7" (2.92mm)

## Speed, Capacities and Weight

---

**Cruise Speed:** 12 Knots Kts. (14 MPH) **Max Speed:** 15.5 Knots Kts. (18 MPH)

**Water Capacity:** 5046 Gallons

**Fuel Capacity:** 18439 Gal Gallons

## Accommodations

---

**Total Cabins:** 6

**Sleeps:** 12

**Total Heads:** 8

**Crew Cabin:** 10

## Hull and Deck Information

---

**Hull Material:** Steel

---

## Engine Information

---

**Engines:** 2

**Manufacturer:** Caterpillar

**Engine Type:** Inboard

**Fuel Type:** Diesel

# PHOTOS

2



3



4



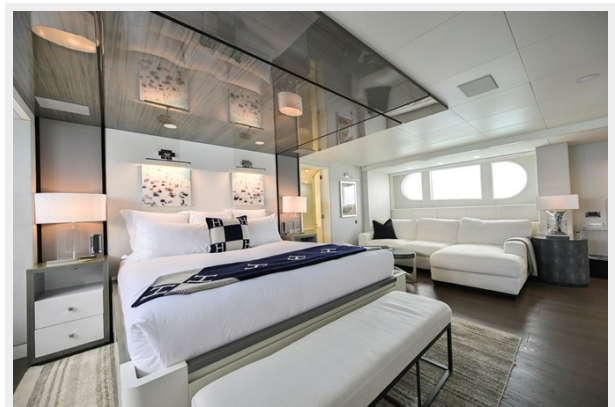
5



6



7



8



9



10



11



13



14



15



16



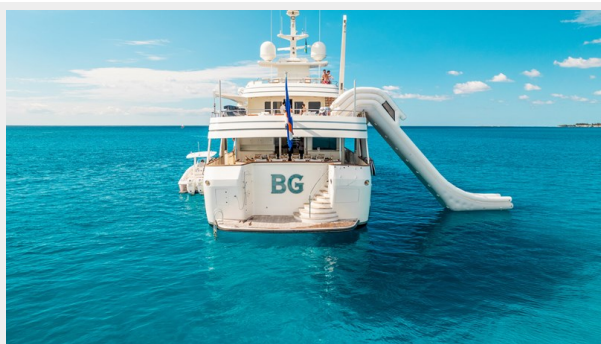
17



18



19

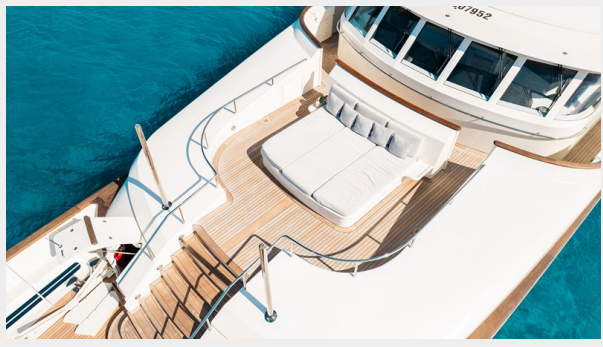


20





21



22



23



24



25



26



27



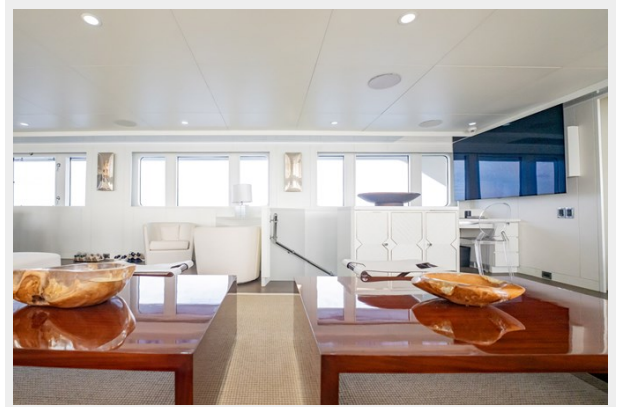
28



29a



29b



29c



29d



30



31



32



33



# CONTACTS

---

Andrey Shestakov, leading yacht broker of the sales department of Shestakov Yacht Sales Inc. Shestakov Yacht Sales Inc., the official representative of the Miami/Fort Lauderdale FL headquarters.

## Contact details

---

Email: **andrey@shestakovyachtsales.com**

Web: [shestakovyachtsales.com/en/](https://shestakovyachtsales.com/en/)

## Telephones

---

USA: **+1(954)274-4435**

## Office hours

---

Monday – Saturday: **9:00 - 21:00** EDT

Sunday: **closed**

## Address

---



Harbour Towne Marina, 850 NE 3rd St, STE 213, Dania, FL 33004