

FOURTH AND FINAL — TIARA



Builder: TIARA

Year Built: 2016

Model: cruiser

Price: \$675,000 USD

Location: United States

LOA: 44' (13.41mm)

Beam: 14.91

Max Draft: 3' 9" (1.14mm)

Cruise Speed: 26 Knots Kts. (30 MPH)

Max Speed: 31 Knots Kts. (36 MPH)

Our experienced yacht broker, Andrey Shestakov, will help you choose and buy a yacht that best suits your needs **FOURTH AND FINAL — TIARA** from our catalogue. Presently, at Shestakov Yacht Sales Inc., we have a wide variety of yachts available on our sale's list. We also work in close contact with all the big yacht manufacturers from all over the world.

If you would like to buy a yacht **FOURTH AND FINAL — TIARA** or would like help answering any questions concerning purchasing, selling or chartering a yacht, please call **+1(954)274-4435**

TABLE OF CONTENTS

TABLE OF CONTENTS	2
SPECIFICATIONS	5
Overview	5
Basic Information	5
Dimensions	5
Speed, Capacities and Weight	5
Accommodations	6
Hull and Deck Information	6
Engine Information	6
PHOTOS	7
Salon Looking Forward	7
Salon to Port	7
Hinged Storage in Salon Seating	7
Salon Settee Forward	7
Upper Control Panel	8
Aft End of Salon	8
Lower Electrical Panel	8
Salon Looking Aft with Shades	8
Salon Looking Aft	9
Galley to Starboard	9
Galley	9
Cooktop	9
Refrigerator/Freezer Drawers	9
Microwave and Cover Storage	9
Galley Covered	10
Overhead Dish Cabinet	10
Sink	10
Sliding Salon TV	10

Helm	10
Electric Helm Seat	10
Helm Detail	11
Port Garmin	11
Stbd. Garmin	11
Joystick and Garmin Controls	11
Master Looking Forward	11
Master to Port	11
Master to Stbd.	12
Head System Under Master Sole	12
Stbd. Head	12
Port Head	12
Port Shower	12
Guest Cabin Looking Aft	12
Guest Cabin Looking Stbd.	13
Guest Cabin Looking Port	13
Bow Area	13
Bow Sun Lounge	13
Windlass Detail	13
Hard Top Equipment	13
Aft Seating and Tender	14
Aft Seating	14
Aft Deck Forward	14
Port Engine	14
Stbd. Engine	14
Stbd. Side Engine Room Forward	14
Forward Engine Room	15
Port Side of Engine Room	15
ISO Transformers	15

Spot Zero System	15
Electro Strainer for Air Conditioning	15
Generator	15
Electro Strainer for Air Conditioning	16
Alternate Profile	16
Alternate Profile	16
Alternate Profile	16
Alt Profile	16
Alternate Profile	16
Stern Quarter	17
Stern Quarter	17
Bow	17
CONTACTS	18
Contact details	18
Telephones	18
Office hours	18
Address	18

SPECIFICATIONS

Overview

Stepping aboard “FOURTH AND FINAL” it becomes immediately apparent the vessel is owned by an experienced Yachtsman. Her unmistakable Tiara lines are bolstered by an elegant blue hull paint, while the interior spaces boast rich teak woodwork.

Low engine hours on Volvo IPS 600’s along with the Volvo joystick integration present a seamless navigating experience. The optional Nautical Structures hydraulic swim platform with teak inlay adds a versatile tender launching/storage system for the included 2017 Sirocco 10”6’ RIB.

Basic Information

Category: cruiser

Sub Category: Express

Model Year: 2017

Year Built: 2016

Country: United States

Dimensions

LOA: 44' (13.41mm)

Beam: 14.91

Max Draft: 3' 9" (1.14mm)

Speed, Capacities and Weight

Cruise Speed: 26 Knots Kts. (30 MPH)

Max Speed: 31 Knots Kts. (36 MPH)

Gross Tonnage: 14.35 Pounds

Water Capacity: 118 Gallons

Holding Tank: 35 Gal Gallons

Fuel Capacity: 350 Gal Gallons

Accommodations

Total Cabins: 2

Total Berths: 3

Total Heads: 2

Hull and Deck Information

Hull Material: Fiberglass

Hull Configuration: Modified V-Hull

Hull Color: Light Blue

Hull Designer: Tiara

Exterior Designer: Tiara

Engine Information

Engines: 2

Manufacturer: Volvo

Engine Type: Inboard

Fuel Type: Diesel

PHOTOS

Salon Looking Forward



Salon to Port



Hinged Storage in Salon Seating



Salon Settee Forward



Aft End of Salon



Upper Control Panel



Lower Electrical Panel



Salon Looking Aft with Shades



Salon Looking Aft



Galley to Starboard



Galley



Cooktop



Refrigerator/Freezer Drawers



Microwave and Cover Storage



Galley Covered



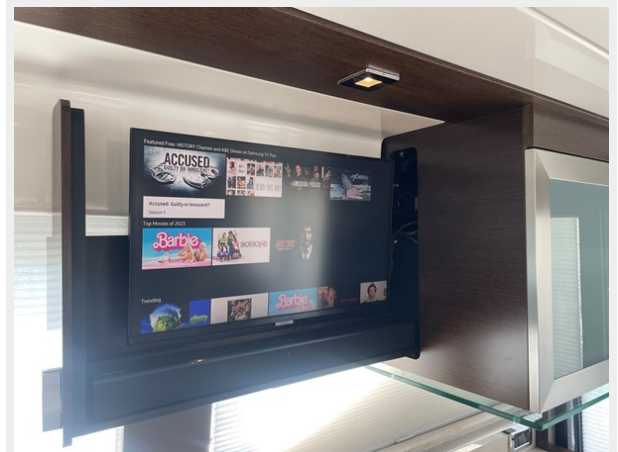
Overhead Dish Cabinet



Sink



Sliding Salon TV



Helm



Electric Helm Seat



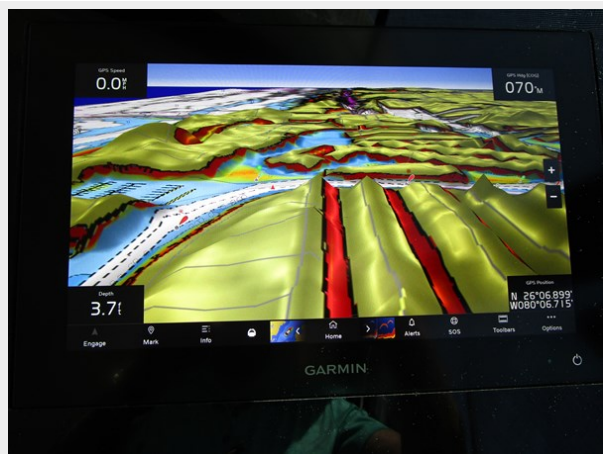
Helm Detail



Port Garmin



Stbd. Garmin



Joystick and Garmin Controls



Master Looking Forward



Master to Port



Master to Stbd.



Head System Under Master Sole



Stbd. Head



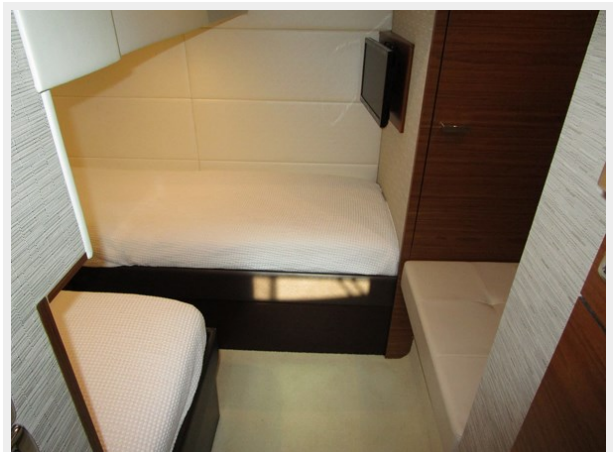
Port Head



Port Shower



Guest Cabin Looking Aft



Guest Cabin Looking Stbd.



Guest Cabin Looking Port



Bow Area



Bow Sun Lounge



Windlass Detail



Hard Top Equipment



Aft Seating and Tender



Aft Seating



Aft Deck Forward



Port Engine



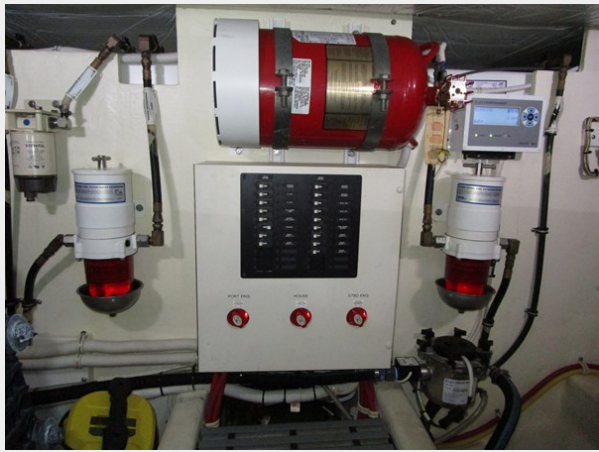
Stbd. Engine



Stbd. Side Engine Room Forward



Forward Engine Room



Port Side of Engine Room



ISO Transformers



Spot Zero System



Electro Strainer for Air Conditioning

Generator



Electro Strainer for Air Conditioning



Alternate Profile



Alternate Profile



Alternate Profile



Alternate Profile



Alt Profile



Stern Quarter



Stern Quarter



Bow



CONTACTS

Andrey Shestakov, leading yacht broker of the sales department of Shestakov Yacht Sales Inc. Shestakov Yacht Sales Inc., the official representative of the Miami/Fort Lauderdale FL headquarters.

Contact details

Email: andrey@shestakovyachtsales.com

Web: shestakovyachtsales.com/en/

Telephones

USA: +1(954)274-4435

Office hours

Monday – Saturday: **9:00 - 21:00** EDT

Sunday: **closed**

Address



Harbour Towne Marina, 850 NE 3rd St,
STE 213, Dania, FL 33004