

HATTERAS 80 — HATTERAS



Builder: HATTERAS

Year Built: 2011

Model: Motor Yacht

Price: \$3,200,000 USD

Location: Panama

LOA: 80' (24.38m)

Beam: 21.33

Min Draft: 5' 8" (1.7m)

Max Draft: 5' 8" (1.7m)

Cruise Speed: 20 Knots Kts. (23 MPH)

Max Speed: 25 Knots Kts. (29 MPH)

Our experienced yacht broker, Andrey Shestakov, will help you choose and buy a yacht that best suits your needs **Hatteras 80 — HATTERAS** from our catalogue. Presently, at Shestakov Yacht Sales Inc., we have a wide variety of yachts available on our sale's list. We also work in close contact with all the big yacht manufacturers from all over the world.

If you would like to buy a yacht **Hatteras 80 — HATTERAS** or would like help answering any questions concerning purchasing, selling or chartering a yacht, please call **+1(954)274-4435**

TABLE OF CONTENTS

TABLE OF CONTENTS	2
SPECIFICATIONS	4
Overview	4
Basic Information	5
Dimensions	5
Speed, Capacities and Weight	6
Accommodations	6
Hull and Deck Information	6
Engine Information	6
PHOTOS	7
Fonduee Studio - Dreamer II 48	7
Fonduee Studio - Dreamer II 52	7
Fonduee Studio - Dreamer II 48	7
Fonduee Studio - Dreamer II 54	7
Fonduee Studio - Dreamer II 15	7
Fonduee Studio - Dreamer II 13	7
Fonduee Studio - Dreamer II 17	8
Fonduee Studio - Dreamer II 18	8
Fonduee Studio - Dreamer II 20	8
Fonduee Studio - Dreamer II 19	8
Fonduee Studio - Dreamer II 21	8
Fonduee Studio - Dreamer II 22	8
Fonduee Studio - Dreamer II 25	9
Fonduee Studio - Dreamer II 23	9
Fonduee Studio - Dreamer II 28	9
Fonduee Studio - Dreamer II 29	9
Fonduee Studio - Dreamer II 29a	10
Fonduee Studio - Dreamer II 31	10

Fonduee Studio - Dreamer II 1	10
Fonduee Studio - Dreamer II 2	10
Fonduee Studio - Dreamer II 5	10
Fonduee Studio - Dreamer II 6	10
Fonduee Studio - Dreamer II 10	11
Fonduee Studio - Dreamer II 8	11
Fonduee Studio - Dreamer II 11	11
CONTACTS	12
Contact details	12
Telephones	12
Office hours	12
Address	12

SPECIFICATIONS

Overview

Simply put, our Hatteras 80 Motor Yacht is a world-class design like no other. That's because this ultra-civilized model was conceived by the most qualified group of experts available: Hatteras costumers. While our team of industry-leading engineers and craftsmen put the lines to paper and executed the project to perfection, the 80's true magic comes from the input of experienced yachtsmen who demanded more. More entertainment spaces. More luxury. More alternative layouts. More sophisticated systems. And the 80 delivers in every way. Sleek styling and a generous 21'3" beam contribute to an expansive vessel with exquisite wood cabinetry, arched doors, marble/granite countertops, custom furnishings, and much more - all standard - not optional.

Salon Curved sliding doors framed in polished stainless steel lead to a vast salon that benefits from the 80's massive 21'3" beam. A wet bar just inside the door is accompanied by a full entertainment center with a massive flat-screen TV. Custom furnishings include a sectional sofa with storage, club chairs, and a grand china cabinet - all complimented by the genuine African mahogany laminates in high gloss finish. Also, dining aboard the 80 is an elegant affair thanks to a beautiful custom table.

Carpeting Whisperwall headliner Day Head Welded and polished curved stainless steel sliding door to aft deck Carbon monoxide detector Fixed frameless windows with tinted safety glass Coffee table Two barrel chairs AC dispersed through decorative valences port and starboard Upgraded wine cooler Upgraded Granite floor in entry Upgraded Power Shades on Crestron Upgraded Control lights on Crestron

Country Galley In the forward galley, the need for functionality is tempered by tasteful fashion. All countertops and backsplashes are granite for easy clean up and timeless style. Appliances include a dishwasher, trash compactor, Sub-Zero upright refrigerator, microwave, full-size oven, and four-burner ceramic cook top. Upgraded custom flooring in galley to 12" x 12" American Tile Large Center Island Forward Dinette Seating Whisperwall headliner Fixed frameless windows with tinted safety glass Stainless sink with disposal Sub Zero upright stainless refrigerator Microwave/convection oven Port and Starboard doors to side deck Companionway Upgraded flooring to 12" x 12" American tile

Master Stateroom & His/Her Head The crown jewel of the 80 is her full-beam master suite, which takes full advantage of the yacht's significant beam and six oversized portlights. The combination of spaciousness, natural light, and water level views will stun all who step through its sketch-face door. The master features a king-size berth with custom headboard, two nightstands, a double-sided dresser and arched doors. A flat-screen TV with CD/DVD player provides entertainment options. Aft of the berth lies the master head with countertops and shower. An enticing optional arrangement includes a his-and-hers head with separate entryways, dual vanities and a shared shower between.

STATEROOM: Carpeting Whisperwall headliner Upgraded LED TV King size bed with custom bedding AC and DC light fixtures Large cedar lined wardrobe closets Mirror ceiling HIS/HER HEAD: Shower with glass doors on either side Towel bars Headhunter freshwater toilet Recirculating fan Air conditioning vents Custom marble countertops VIP Forward Stateroom & Head Carpeting Whisperwall headliner Queensize centerline bed with custom bedding Nightstands, port and starboard Upgraded LED TV Cedar lined hanging locker Low level lights under bed Private head with custom granite counter tops

Port

Stateroom & Head Family and friends get the VIP treatment in the main guest stateroom to port. A queen-sized berth is fitted with an upgraded mattress and plush linen; storage below is accessed via pneumatic rams. Multiple drawers and cabinets along the hull sides and bulkhead offer abundant stowage. The private head features marble flooring and countertops. Carpeting Whisperwall headliner Queensize bed with custom bedding Upgraded LED TV Private head with custom granite counter tops Starboard Stateroom & Head Carpeting Whisperwall headliner Upgraded LED TV Private head with custom granite counter tops

Crew Quarters & Head Standard crew quarters aft of the engine room consist of two staterooms with walk-around queen berth, plus a separate sitting area. Cedar-lined lockers, a flat-screen TV, sink, microwave oven and head assure the crew of self-sufficiency.

Sport Deck/Swim Platform Access to the "sport deck" swim platform from the upper aft deck is by way of molded stairwells to port and starboard, which are guarded by stainless-steel gates. A watertight door on the sport deck provides access to the crew quarters and engine room. Molded fiberglass with non-skid sole Pop-up cleats Watertight door to Crew's quarters and engine room Companionway

Hull & Decks The 80's hull shape features a "warped" bottom with a sharp entry forward and highly variable deadrise that becomes nearly flat at the transom. The convexity of the bow lessens wave impact and results in an incredibly smooth ride in head seas. Flatter sections aft reduce water resistance, improving handling at low speeds and increasing stability while planing. Specially designed strakes that bisect the stagnation line (the point at which the water's surface meets the hull bottom once on plane) provide additional lift and improve tracking in all conditions. Double chines and a flared bow deflect spray out and away from the boat. Like all Hatteras models, the 80 is founded on a solid fiberglass bottom that includes sturdy support in key areas like the hull tunnel, shaft log and strut locations. Divinycell coring is infused into the hull sides, decks and superstructure to add stiffness and reduce weight. The hull also benefits from an advanced variable-deadrise design that utilizes large propeller tunnels to reduce draft and increase efficiency.

Basic Information

Category: Motor Yacht

Sub Category: Motor Yacht

Model Year: 2011

Year Built: 2011

Country: Panama

Dimensions

LOA: 80' (24.38mm)

Beam: 21.33

Min Draft: 5' 8" (1.7mm)

Max Draft: 5' 8" (1.7mm)

Speed, Capacities and Weight

Cruise Speed: 20 Knots Kts. (23 MPH)

Cruise Speed Range: 345

Max Speed: 25 Knots Kts. (29 MPH)

Max Speed Range: 270 Kts.

Gross Tonnage: 178 Pounds

Water Capacity: 326 Gallons

Holding Tank: 388 Gal Gallons

Fuel Capacity: 2385 Gal Gallons

Accommodations

Total Cabins: 4

Total Berths: 8

Sleeps: 8

Total Heads: 5

Crew Cabin: 3

Crew Berths: 3

Crew Heads: 2

Hull and Deck Information

Hull Material: Fiberglass

Deck Material: Teak

Hull Designer: Hatteras

Interior Designer: Hatteras

Engine Information

Engines: 2

Manufacturer: Caterpillar

Fuel Type: Diesel

PHOTOS

Fondue Studio - Dreamer II 48



Fondue Studio - Dreamer II 52



Fondue Studio - Dreamer II 48



Fondue Studio - Dreamer II 54



Fondue Studio - Dreamer II 13



Fondue Studio - Dreamer II 15



Fondue Studio - Dreamer II 17



Fondue Studio - Dreamer II 18



Fondue Studio - Dreamer II 20



Fondue Studio - Dreamer II 19



Fondue Studio - Dreamer II 21



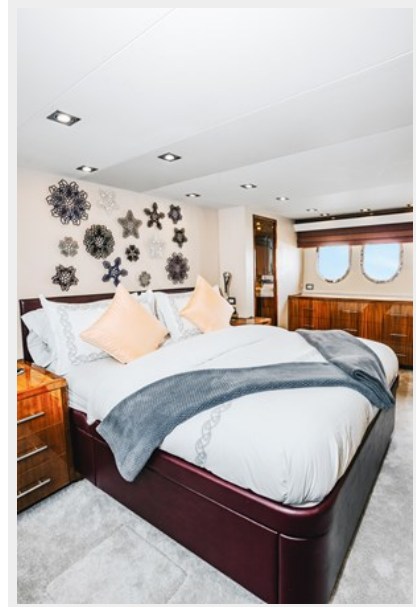
Fondue Studio - Dreamer II 22



Fonduée Studio - Dreamer II 23



Fonduée Studio - Dreamer II 25



Fonduée Studio - Dreamer II 28



Fonduée Studio - Dreamer II 29



Fondue Studio - Dreamer II 29a



Fondue Studio - Dreamer II 31



Fondue Studio - Dreamer II 1



Fondue Studio - Dreamer II 2



Fondue Studio - Dreamer II 5

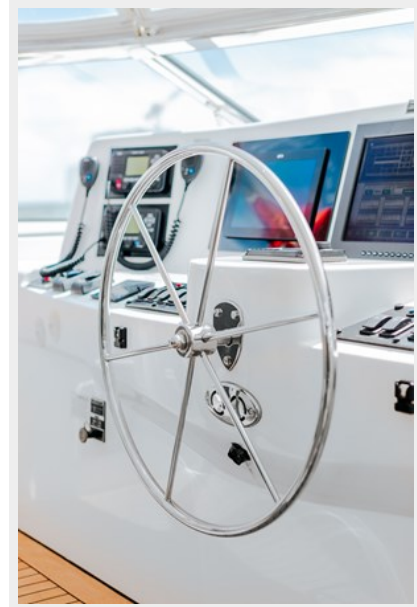


Fondue Studio - Dreamer II 6



Fondue Studio - Dreamer II 10

Fondue Studio - Dreamer II 8



Fondue Studio - Dreamer II 11



CONTACTS

Andrey Shestakov, leading yacht broker of the sales department of Shestakov Yacht Sales Inc. Shestakov Yacht Sales Inc., the official representative of the Miami/Fort Lauderdale FL headquarters.

Contact details

Email: andrey@shestakovyachtsales.com

Web: shestakovyachtsales.com/en/

Telephones

USA: +1(954)274-4435

Office hours

Monday – Saturday: **9:00 - 21:00** EDT

Sunday: **closed**

Address



Harbour Towne Marina, 850 NE 3rd St,
STE 213, Dania, FL 33004