

CLASSIFIED — HORIZON



Builder: HORIZON

Year Built: 2000

Model: Pilothouse

Price: \$760,000 USD

Location: United States

LOA: 70' 2" (21.39mm)

Beam: 18.75

Min Draft: 5' 11" (1.8mm)

Max Draft: 6' 1" (1.85mm)

Cruise Speed: 18 Knots Kts. (21 MPH)

Max Speed: 23 Knots Kts. (26 MPH)

Our experienced yacht broker, Andrey Shestakov, will help you choose and buy a yacht that best suits your needs **CLASSIFIED — HORIZON** from our catalogue. Presently, at Shestakov Yacht Sales Inc., we have a wide variety of yachts available on our sale's list. We also work in close contact with all the big yacht manufacturers from all over the world.

If you would like to buy a yacht **CLASSIFIED — HORIZON** or would like help answering any questions concerning purchasing, selling or chartering a yacht, please call **+1(954)274-4435**

TABLE OF CONTENTS

TABLE OF CONTENTS	2
SPECIFICATIONS	3
Overview	3
Basic Information	4
Dimensions	4
Speed, Capacities and Weight	4
Accommodations	4
Hull and Deck Information	4
Engine Information	4
PHOTOS	5
Aft Stateroom-Crew 3	15
Aft Stateroom-Crew	15
Aft Stateroom-Crew 1	16
Aft Stateroom-Crew 2	16
CONTACTS	21
Contact details	21
Telephones	21
Office hours	21
Address	21

SPECIFICATIONS

Overview

THE OWNER BOUGHT A BIGGER BOAT!

MUST SELL!!

LUXURY 2000 70' HORIZON MOTOR YACHT

Upgrades and features include:

- 3 Staterooms
- 4 Heads
- Powered by Twin Caterpillar 3412E, 1400 HP each
- 2 Onan Generators
- Underwater Lights
- 2024 Hull Shield Installed (Growth Protection)
- 2024 Speakers
- 2023 Caterpillar Engine Monitor Displays
- 2020 Upgraded Electronics
- 2019 Bimini with Enclosure
- 2012 Total Yacht Repainted
- Hydraulic Bow & Stern Thruster
- Aft Drive Station
- Hydraulic Windlass
- Stabilized
- Watermaker
- Oil Change System

INCLUDES:

- 2011 AB 11' RIB
- 40 HP Yamaha
- Electronics Pkg.

Basic Information

Category: Pilothouse

Sub Category: Pilothouse

Model Year: 2000

Year Built: 2000

Country: United States

Dimensions

LOA: 70' 2" (21.39mm)

Beam: 18.75

Min Draft: 5' 11" (1.8mm)

Max Draft: 6' 1" (1.85mm)

Speed, Capacities and Weight

Cruise Speed: 18 Knots Kts. (21 MPH)

Max Speed: 23 Knots Kts. (26 MPH)

Water Capacity: 400 Gallons

Holding Tank: 140 Gal Gallons

Fuel Capacity: 1720 Gal Gallons

Accommodations

Total Cabins: 3

Total Heads: 4

Hull and Deck Information

Hull Material: Fiberglass

Hull Color: WHITE

Engine Information

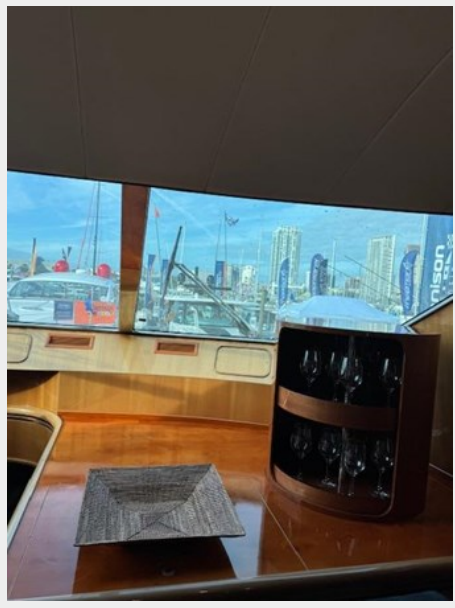
Engines: 2

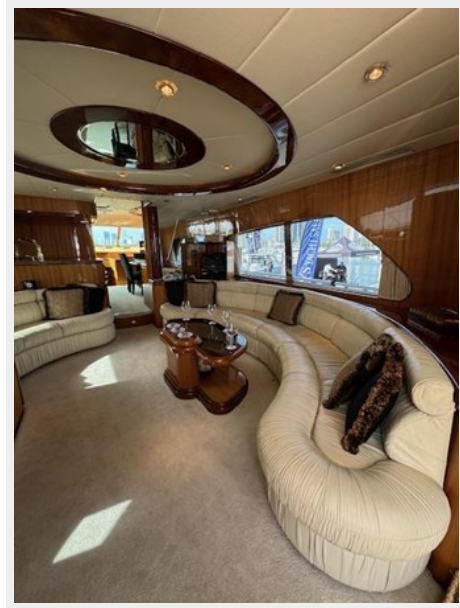
Manufacturer: Caterpillar

Engine Type: Inboard

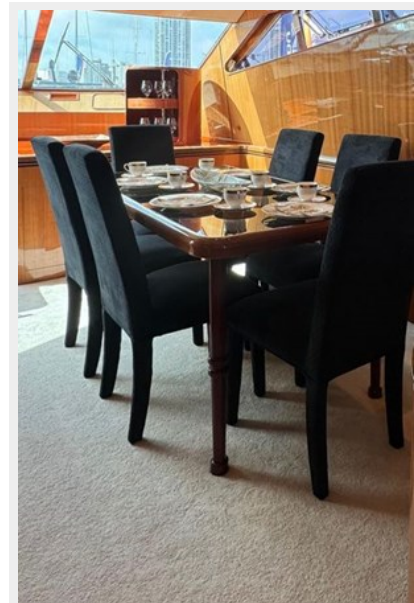
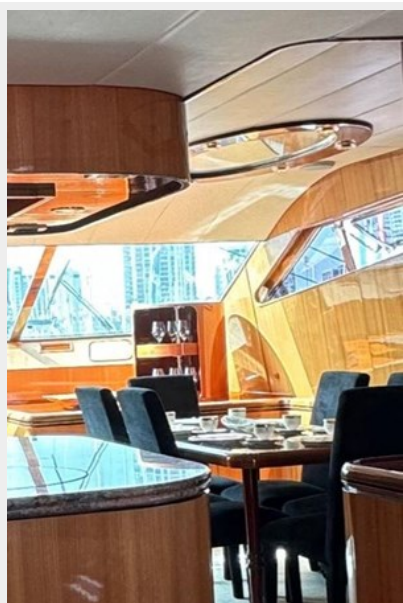
Fuel Type: Diesel

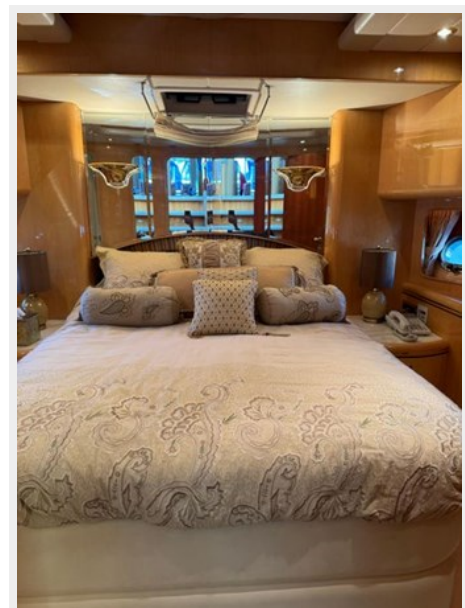
PHOTOS





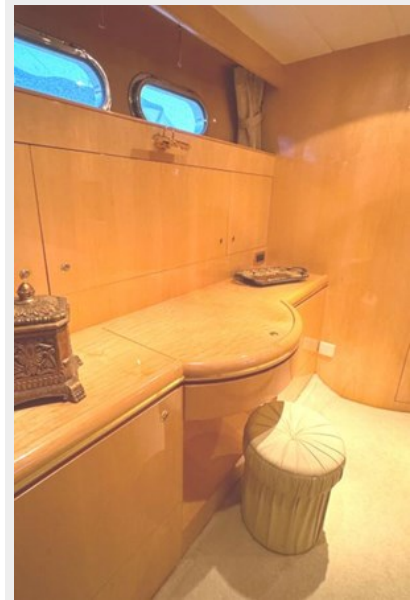




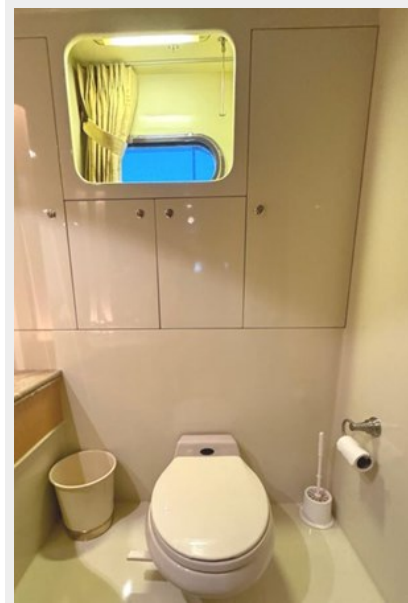
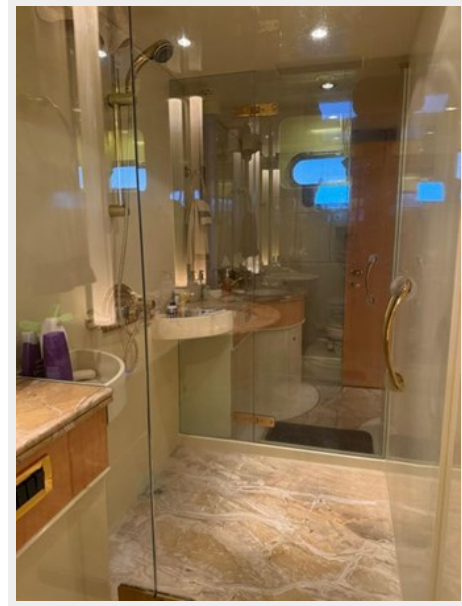






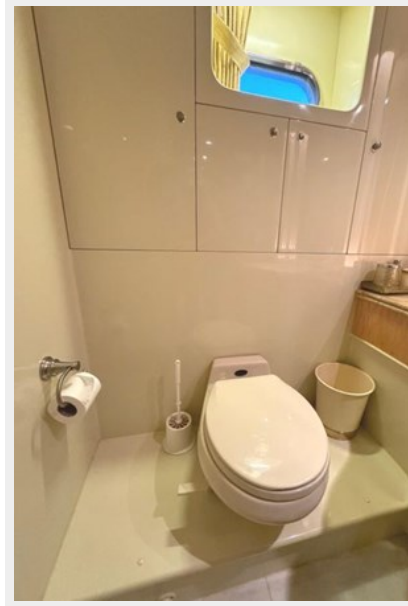








Aft Stateroom-Crew 3



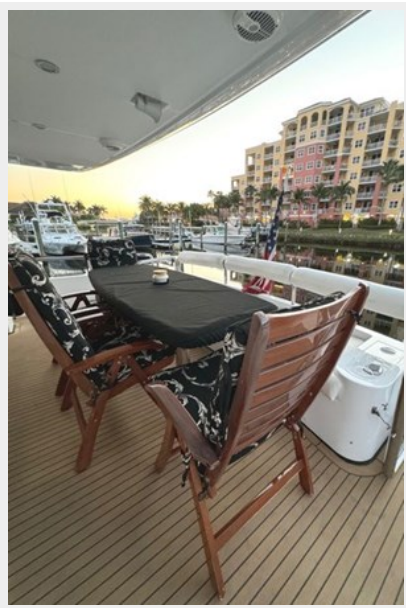
Aft Stateroom-Crew



Aft Stateroom-Crew 1



Aft Stateroom-Crew 2

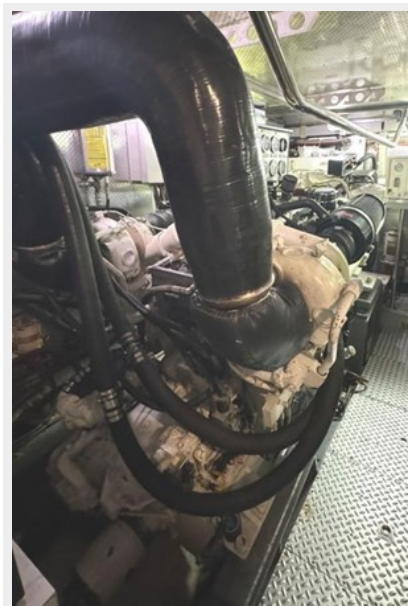
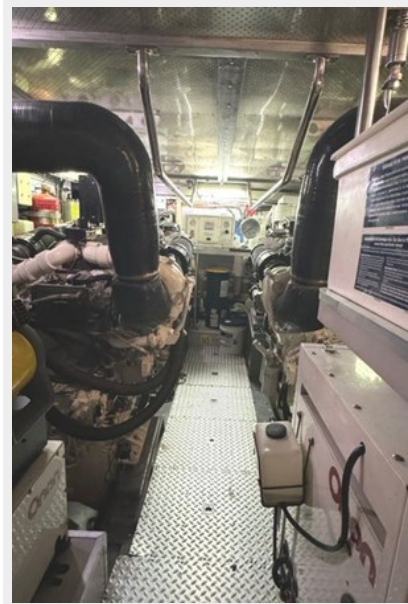








1	WHITE	-----	50 FT.
2	WHITE	-----	75 FT.
1	RED	-----	100 FT.
2	RED	-----	125 FT.
3	RED	-----	150 FT.
4	RED	-----	175 FT.
1	GREEN	-----	200 FT.
2	GREEN	-----	225 FT.
3	GREEN	-----	250 FT.





CONTACTS

Andrey Shestakov, leading yacht broker of the sales department of Shestakov Yacht Sales Inc. Shestakov Yacht Sales Inc., the official representative of the Miami/Fort Lauderdale FL headquarters.

Contact details

Email: andrey@shestakovyachtsales.com

Web: shestakovyachtsales.com/en/

Telephones

USA: +1(954)274-4435

Office hours

Monday – Saturday: **9:00 - 21:00** EDT

Sunday: **closed**

Address



Harbour Towne Marina, 850 NE 3rd St,
STE 213, Dania, FL 33004