

ENDLESS SUMMER — HATTERAS



Builder: HATTERAS

Year Built: 2008

Model: Pilothouse

Price: \$2,099,000 USD

Location: United States

LOA: 72' (21.95m)

Beam: 19.5

Max Draft: 5' 4" (1.63m)

Cruise Speed: 20 Knots Kts. (23 MPH)

Max Speed: 25 Knots Kts. (29 MPH)

Our experienced yacht broker, Andrey Shestakov, will help you choose and buy a yacht that best suits your needs **Endless Summer — HATTERAS** from our catalogue. Presently, at Shestakov Yacht Sales Inc., we have a wide variety of yachts available on our sale's list. We also work in close contact with all the big yacht manufacturers from all over the world.

If you would like to buy a yacht **Endless Summer — HATTERAS** or would like help answering any questions concerning purchasing, selling or chartering a yacht, please call **+1(954)274-4435**

TABLE OF CONTENTS

TABLE OF CONTENTS	2
SPECIFICATIONS	5
Overview	5
Basic Information	5
Dimensions	5
Speed, Capacities and Weight	5
Accommodations	5
Hull and Deck Information	6
Engine Information	6
PHOTOS	7
3	7
2	7
4	7
5	7
6	7
9a	7
9b	8
10	8
11	8
12	8
13a	8
13b	8
13c	9
14	9
15	9
16	9
17	9
18	9

19	10
20	10
21a	10
21b	10
22	10
23	10
24	11
25	11
26	11
27	11
28	11
29	11
30	12
31	12
32	12
33	12
34	12
35	12
36	13
37	13
38	13
39	13
40	13
41	13
42	14
43	14
44	14
45	14
46	14

47	14
48	15
49	15
50	15
51	15
52a	15
52b	15
53	16
54	16
55	16
56	16
57	16
CONTACTS	17
Contact details	17
Telephones	17
Office hours	17
Address	17

SPECIFICATIONS

Overview

2008 Hatteras 72 Motor Yacht

Basic Information

Category: Pilothouse

Sub Category: Pilothouse

Model Year: 2008

Year Built: 2008

Country: United States

Dimensions

LOA: 72' (21.95mm)

Beam: 19.5

Max Draft: 5' 4" (1.63mm)

Speed, Capacities and Weight

Cruise Speed: 20 Knots Kts. (23 MPH)

Max Speed: 25 Knots Kts. (29 MPH)

Gross Tonnage: 160000 Pounds

Water Capacity: 300 Gallons

Holding Tank: 330 Gal Gallons

Fuel Capacity: 2200 Gal Gallons

Accommodations

Total Cabins: 4

Sleeps: 8

Total Heads: 5

Hull and Deck Information

Hull Material: Fiberglass

Hull Configuration: Semi-Displacement

Engine Information

Engines: 2

Manufacturer: Caterpillar

Engine Type: Inboard

Fuel Type: Diesel

PHOTOS

2



3



4



5



6



9a



9b



10



11



12



13a



13b



13c



14



15



16



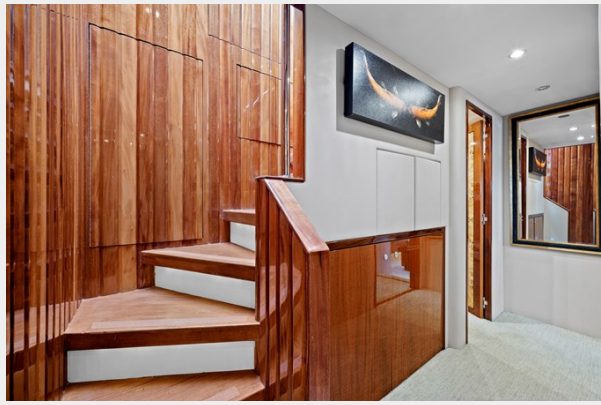
17



18



19



20



21a



21b



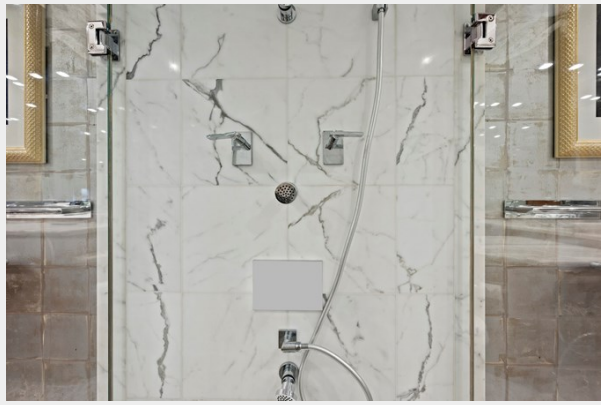
22



23



24



25



26



27



28



29



30



31



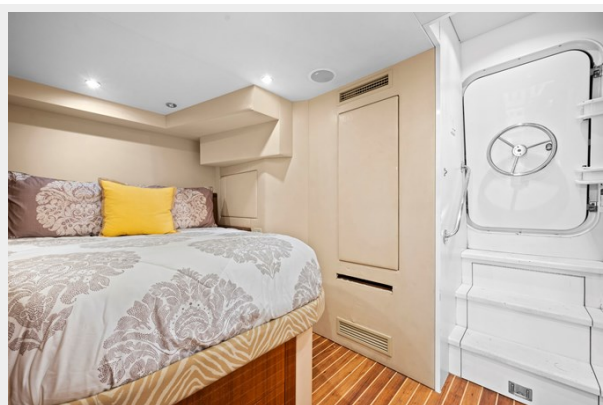
32



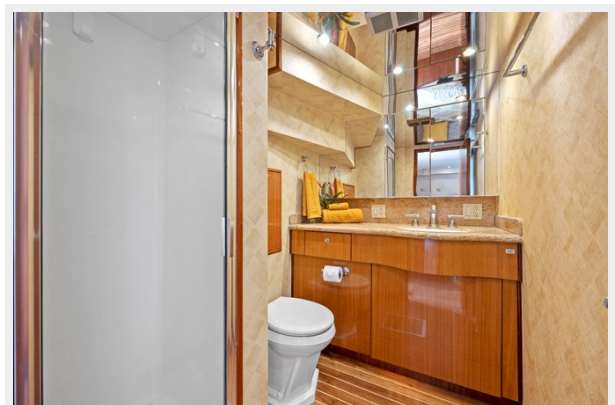
33



34



35



36



37



38



39



40



41



42



43



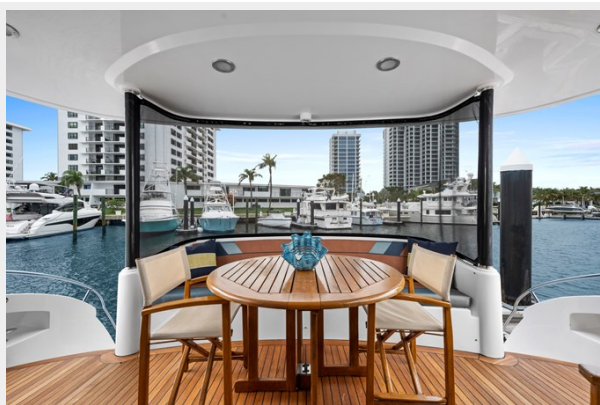
44



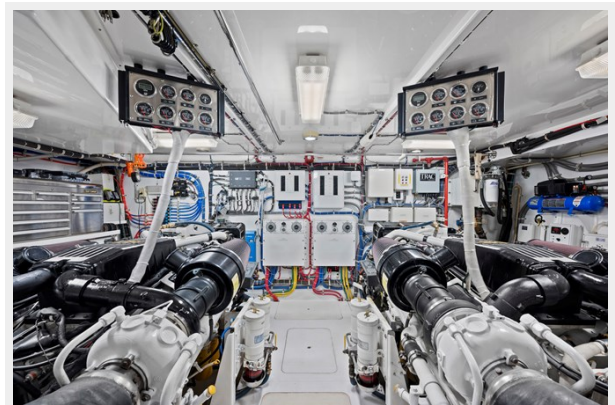
45



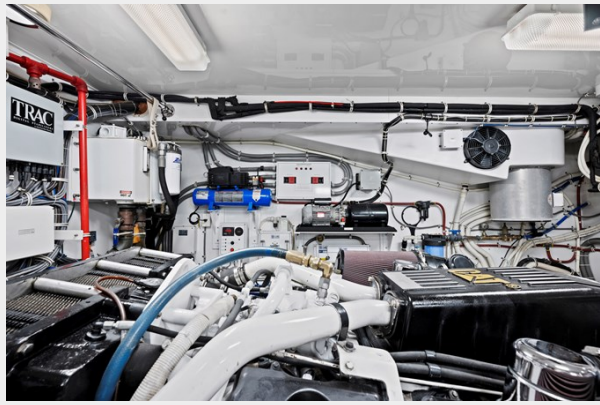
46



47



48



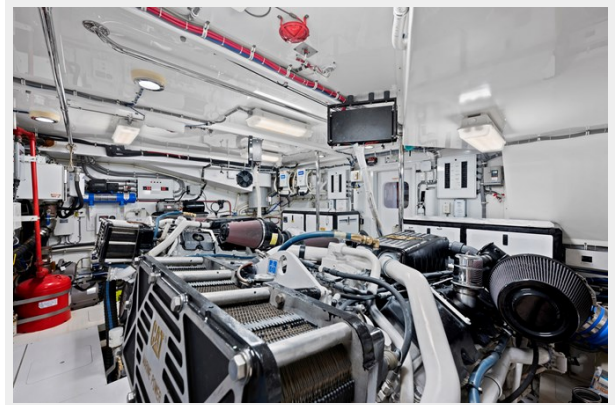
49



50



51



52a



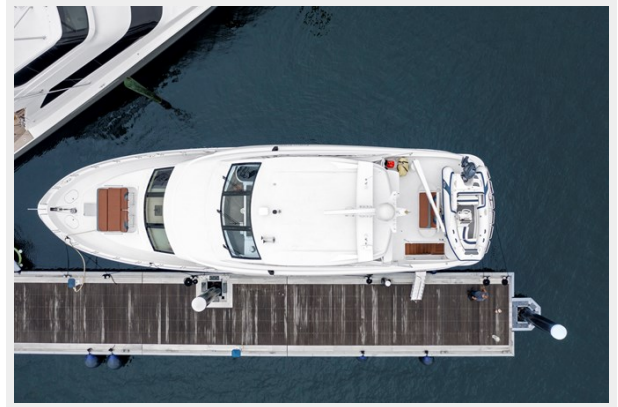
52b



53



54



55



56



57



CONTACTS

Andrey Shestakov, leading yacht broker of the sales department of Shestakov Yacht Sales Inc. Shestakov Yacht Sales Inc., the official representative of the Miami/Fort Lauderdale FL headquarters.

Contact details

Email: andrey@shestakovyachtsales.com

Web: shestakovyachtsales.com/en/

Telephones

USA: +1(954)274-4435

Office hours

Monday – Saturday: **9:00 - 21:00** EDT

Sunday: **closed**

Address



Harbour Towne Marina, 850 NE 3rd St,
STE 213, Dania, FL 33004