

ROXY MARIA — HARGRAVE



Builder: HARGRAVE

Year Built: 2007

Model: Flybridge

Price: \$1,990,000 USD

Location: United States

LOA: 82' (24.99mm)

Beam: 21

Min Draft: 5' 8" (1.73mm)

Max Draft: 6' 5" (1.96mm)

Cruise Speed: 18 Knots Kts. (21 MPH)

Max Speed: 23 Knots Kts. (26 MPH)

Our experienced yacht broker, Andrey Shestakov, will help you choose and buy a yacht that best suits your needs **Roxy Maria — HARGRAVE** from our catalogue. Presently, at Shestakov Yacht Sales Inc., we have a wide variety of yachts available on our sale's list. We also work in close contact with all the big yacht manufacturers from all over the world.

If you would like to buy a yacht **Roxy Maria — HARGRAVE** or would like help answering any questions concerning purchasing, selling or chartering a yacht, please call **+1(954)274-4435**

TABLE OF CONTENTS

TABLE OF CONTENTS	2
SPECIFICATIONS	3
Overview	3
Basic Information	3
Dimensions	3
Speed, Capacities and Weight	4
Accommodations	4
Hull and Deck Information	4
Engine Information	4
PHOTOS	5
IMG_1974	7
CONTACTS	11
Contact details	11
Telephones	11
Office hours	11
Address	11

SPECIFICATIONS

Overview

Constructed by Hargrave, one of the renowned enterprises in the shipbuilding industry, Roxy Maria epitomizes luxury. Hargrave has underpinned its reputation as the principal architect of highly personalized yachts for discerning clientele with an unrivaled emphasis on class and character.

Donated to a Foundation this yacht can be purchased with a Lease with option to Purchase for a 30 month term as per February 2024.

Fully equipped with Bow and Stern Thrusters, underway hydraulic stabilizers by Naiad, 4 electronic maneuvering stations and full walk arounds she is the perfect yacht to operate her with easiness or as an Owner operator or with minimum crew.

Roxy Maria Features:

Bow and Stern Thrusters Hydraulic Stabilizers by Naiad Hydraulic Swim Platform and Tender Storage Platform Upper Deck Davit with lifting capacity of 1500 pds Cruising speeds of 20 kts with maximum speeds of 23 knots

Tender Included.

Basic Information

Category: Flybridge

Sub Category: Flybridge

Model Year: 2007

Year Built: 2007

Country: United States

Dimensions

LOA: 82' (24.99mm)

Beam: 21

Min Draft: 5' 8" (1.73mm)

Max Draft: 6' 5" (1.96mm)

Speed, Capacities and Weight

Cruise Speed: 18 Knots Kts. (21 MPH)

Cruise Speed Range: 500

Max Speed: 23 Knots Kts. (26 MPH)

Water Capacity: 600 Gallons

Holding Tank: 100 Gal Gallons

Fuel Capacity: 3000 Gal Gallons

Accommodations

Total Cabins: 4

Total Berths: 10

Sleeps: 10

Total Heads: 5

Crew Cabin: 2

Crew Berths: 2

Crew Heads: 1

Hull and Deck Information

Hull Material: Fiberglass

Hull Configuration: Semi-Displacement

Hull Color: White

Hull Designer: Hargrave

Exterior Designer: Hargrave Design Team

Interior Designer: Yacht interiors by Shelley

Engine Information

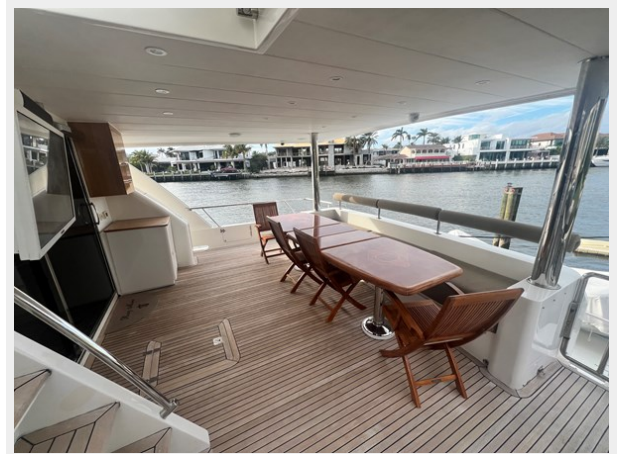
Engines: 2

Manufacturer: Caterpillar

Engine Type: Inboard

Fuel Type: Diesel

PHOTOS

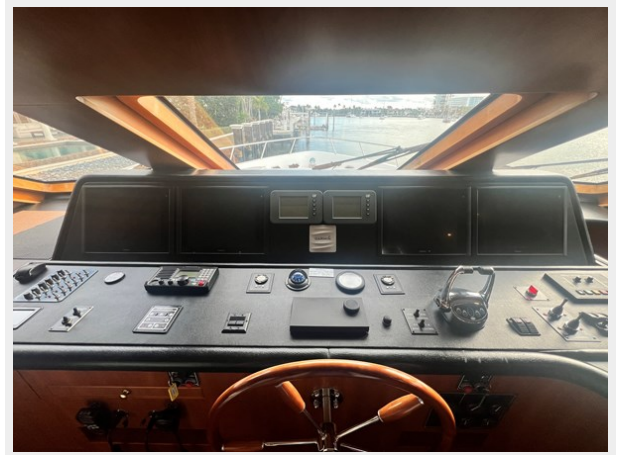


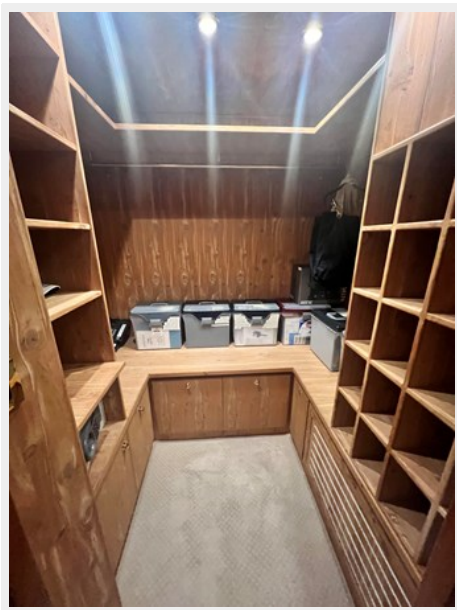


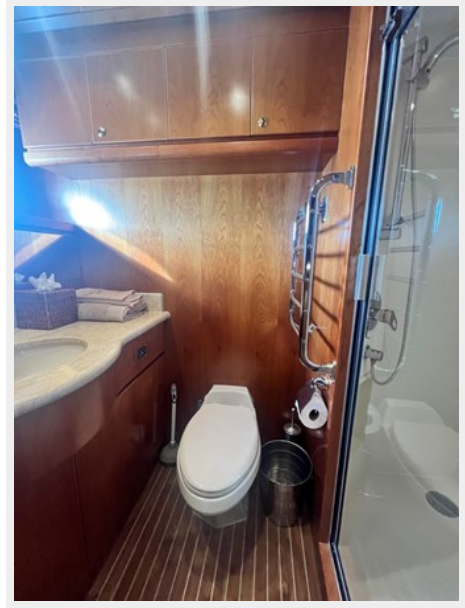


IMG_1974









CONTACTS

Andrey Shestakov, leading yacht broker of the sales department of Shestakov Yacht Sales Inc. Shestakov Yacht Sales Inc., the official representative of the Miami/Fort Lauderdale FL headquarters.

Contact details

Email: andrey@shestakovyachtsales.com

Web: shestakovyachtsales.com/en/

Telephones

USA: +1(954)274-4435

Office hours

Monday – Saturday: **9:00 - 21:00** EDT

Sunday: **closed**

Address



Harbour Towne Marina, 850 NE 3rd St,
STE 213, Dania, FL 33004