

## SUN SCREAM — CONTENDER



**Builder:** CONTENDER

**Year Built:** 2008

**Model:** cruiser

**Price:** \$399,900 USD

**Location:** United States

**LOA:** 38' 1" (11.61mm)

**Beam:** 11.66

**Min Draft:** 2' (0.61mm)

**Max Draft:** 2' (0.61mm)

Our experienced yacht broker, Andrey Shestakov, will help you choose and buy a yacht that best suits your needs **SUN SCREAM — CONTENDER** from our catalogue. Presently, at Shestakov Yacht Sales Inc., we have a wide variety of yachts available on our sale's list. We also work in close contact with all the big yacht manufacturers from all over the world.

If you would like to buy a yacht **SUN SCREAM — CONTENDER** or would like help answering any questions concerning purchasing, selling or chartering a yacht, please call **+1(954)274-4435**

---

# TABLE OF CONTENTS

---

TABLE OF CONTENTS	2
SPECIFICATIONS	5
Overview	5
Basic Information	5
Dimensions	5
Speed, Capacities and Weight	5
Accommodations	5
Hull and Deck Information	6
Engine Information	6
PHOTOS	7
1	7
2	7
3	7
F132	7
F133	8
F134	8
F135	8
F136	8
F137	8
F138	8
F139	9
F140	9
F141	9
F142	9
F143	9
F144	9
F146	10
F147	10

---

F148	10
F149	10
F150	10
F151	10
F152	11
F153	11
F154	11
F155	11
F156	11
F157	11
IMG_5336	12
F158	12
IMG_5337	12
IMG_5338	12
IMG_5339	13
IMG_5340	13
IMG_5341	13
IMG_5342	13
J13	14
J14	14
J15	14
J16	14
J17	14
J18	14
J19	15
J20	15
J21	15
J22	15
CONTACTS	16

---

---

Contact details	16
Telephones	16
Office hours	16
Address	16

---

# SPECIFICATIONS

---

## Overview

---

Preliminary listing 2008 Contender 38 Express "Sun Scream". Repowered with 2019 Yamaha 350's with just under 170 hours...and still under warranty until August 2024. Newer 8 Series Garmin, one owner, lift kept since new. The Yamaha's were just serviced by Tuppen's Marine. "Sun Scream" is turnkey and ready to cruise or fish your favorite waters.

The 38 Express was Contender's flagship and is another example of there dominance in the sportfishing world. It boasts the unique Contender ride, smooth, dry, and agile. Designed for fishing and cruising this express is bursting with blue water features yet perfect for yachting between islands.

## Basic Information

---

**Category:** cruiser

**Sub Category:** Express

**Model Year:** 2008

**Year Built:** 2008

**Country:** United States

## Dimensions

---

**LOA:** 38' 1" (11.61mm)

**Beam:** 11.66

**Min Draft:** 2' (0.61mm)

**Max Draft:** 2' (0.61mm)

## Speed, Capacities and Weight

---

**Fuel Capacity:** 550 Gal Gallons

## Accommodations

---

**Total Cabins:** 2

---

## Hull and Deck Information

---

**Hull Material:** Fiberglass

## Engine Information

---

**Engines:** 1

**Manufacturer:** Yamaha

# PHOTOS

1



2



3



F132

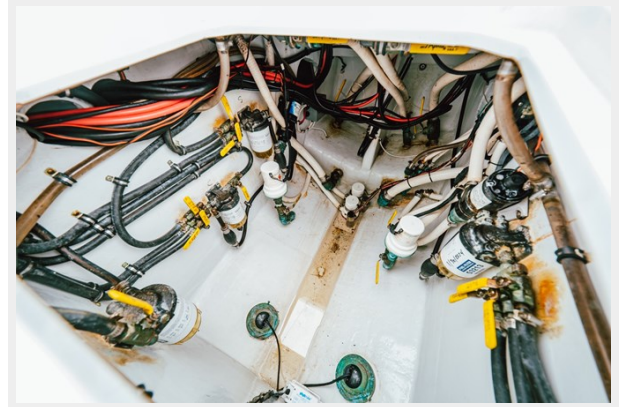




F133



F134



F135



F136



F137



F138





F139



F140



F141



F142



F143



F144



F146



F147



F148



F149



F150



F151





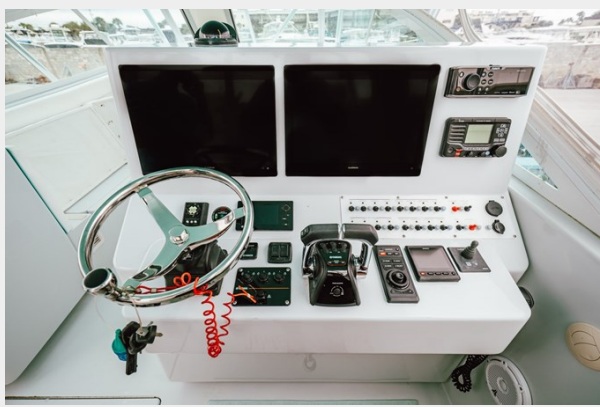
F152



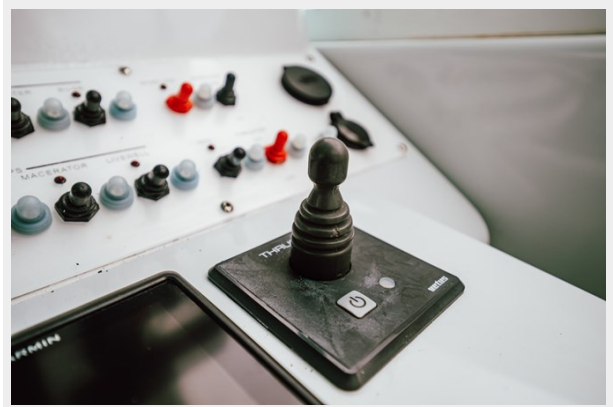
F153



F154



F155



F156



F157



F158



IMG\_5336



IMG\_5337



IMG\_5338



IMG\_5339



IMG\_5340



IMG\_5341



IMG\_5342

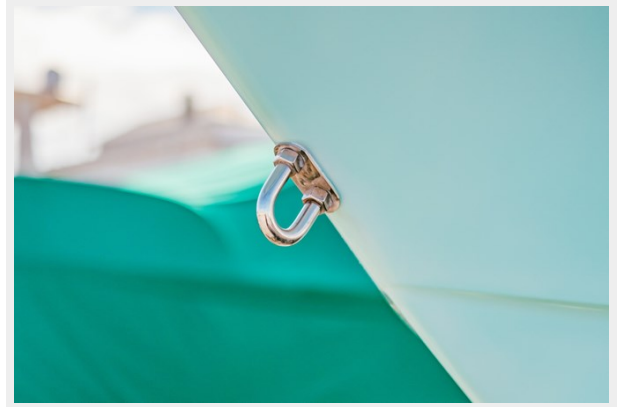




J13



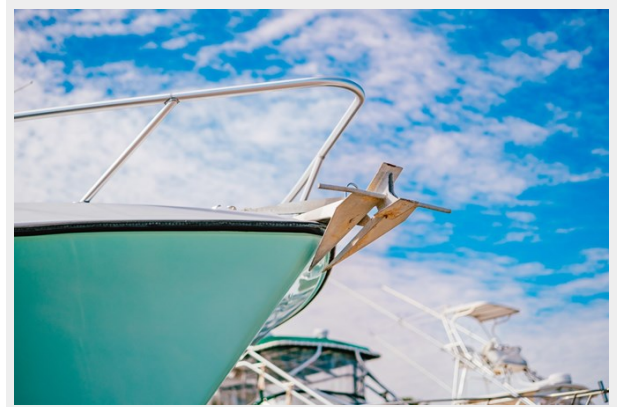
J14



J15



J16



J17



J18





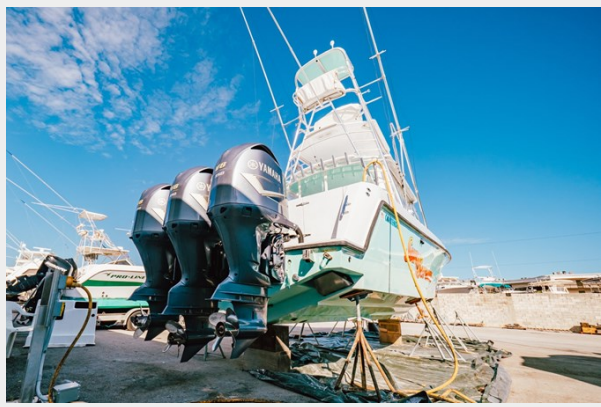
J19



J20



J21



J22



---

# CONTACTS

---

Andrey Shestakov, leading yacht broker of the sales department of Shestakov Yacht Sales Inc. Shestakov Yacht Sales Inc., the official representative of the Miami/Fort Lauderdale FL headquarters.

---

## Contact details

---

Email: [andrey@shestakovyachtsales.com](mailto:andrey@shestakovyachtsales.com)

Web: [shestakovyachtsales.com/en/](http://shestakovyachtsales.com/en/)

---

## Telephones

---

USA: +1(954)274-4435

---

## Office hours

---

Monday – Saturday: **9:00 - 21:00** EDT

Sunday: **closed**

---

## Address

---



Harbour Towne Marina, 850 NE 3rd St,  
STE 213, Dania, FL 33004