

SKYLARK — EASTERN BOATS



Builder: EASTERN BOATS

Year Built: 2018

Model: cruiser

Price: \$259,900 USD

Location: United States

LOA: 31' 3" (9.52mm)

Beam: 11.16

Cruise Speed: 17 Knots Kts. (20 MPH)

Max Speed: 22 Knots Kts. (25 MPH)

Our experienced yacht broker, Andrey Shestakov, will help you choose and buy a yacht that best suits your needs **SKYLARK — EASTERN BOATS** from our catalogue. Presently, at Shestakov Yacht Sales Inc., we have a wide variety of yachts available on our sale's list. We also work in close contact with all the big yacht manufacturers from all over the world.

If you would like to buy a yacht **SKYLARK — EASTERN BOATS** or would like help answering any questions concerning purchasing, selling or chartering a yacht, please call **+1(954)274-4435**

TABLE OF CONTENTS

TABLE OF CONTENTS	2
SPECIFICATIONS	5
Overview	5
Basic Information	5
Dimensions	5
Speed, Capacities and Weight	6
Accommodations	6
Hull and Deck Information	6
Engine Information	6
PHOTOS	7
2	7
3	7
4	7
5	7
6	7
7	7
8	8
9	8
10	8
11	8
12	8
13	8
14	9
15	9
16	9
17	9
18	9
19	9

20	10
21	10
22	10
23	10
24	10
25	10
26	11
27	11
28	11
29	11
30	11
31	11
32	12
33	12
34	12
35	12
36	12
37	12
38	13
39	13
40	13
41	13
42	13
43	13
44	14
45	14
46	14
47	14
48	14

CONTACTS	15
-----	-----
Contact details	15
-----	-----
Telephones	15
-----	-----
Office hours	15
-----	-----
Address	15
-----	-----

SPECIFICATIONS

Overview

Skylark is a Downeast style boat ... a custom build from Eastern Boats that has been meticulously maintained from new Two Owners and only Fresh Water Used for first Four Years including Heated Winter Storage.

This proven hull is a Royal Lowell design, originating as the 31 JC, she features a semi-displacement hull with beautiful sheer, hard chines, and prop-protecting keel giving her excellent speed, efficiency and stability both underway and at rest Over 400 of these boats have been built....used in charter operation and for recreational fishing and family cruising (potential for New England and the Bahamas cruising).

Cabin accommodation includes a forward V-berth, enclosed head and shower, teak and ash (holly) sole and a hanging locker. The pilothouse offers a comfortable helm and companion seats, a settee/dinette that converts to a double bunk And a galley with two burner stove/oven, countertop, sink and refrigerator. Center windscreen opens for ventilation. The roomy cockpit is large enough for entertaining, diving or fishing activities. Extensive options include heating/air conditioning, a 3.5 kW genset, a molded transom platform as well as electric/electronics as detailed.

Skylark is powered by a single 380 hp Cummins, cruising comfortably at 17 knots at 2 mpg.

COME TAKE A LOOK TODAY AND BE ON THE WATER NEXT WEEKEND!

Basic Information

Category: cruiser

Sub Category: Downeast

Model Year: 2018

Year Built: 2018

Country: United States

Dimensions

LOA: 31' 3" (9.52mm)

Beam: 11.16

Speed, Capacities and Weight

Cruise Speed: 17 Knots Kts. (20 MPH)

Max Speed: 22 Knots Kts. (25 MPH)

Water Capacity: 40 Gallons

Holding Tank: 20 Gal Gallons

Fuel Capacity: 200 Gal Gallons

Accommodations

Total Cabins: 1

Total Heads: 1

Hull and Deck Information

Hull Material: Fiberglass

Engine Information

Engines: 1

Manufacturer: Cummins

Engine Type: Inboard

Fuel Type: Diesel

PHOTOS

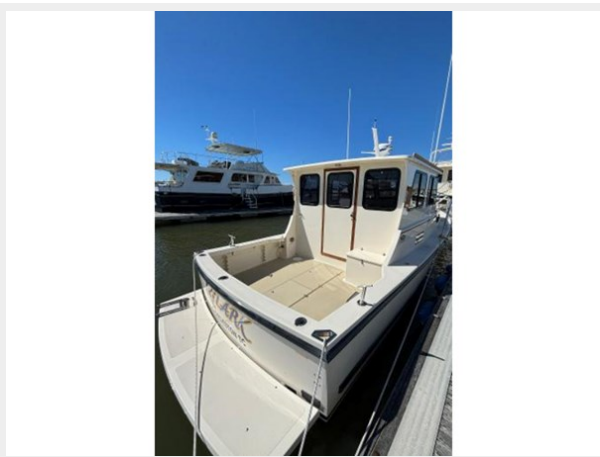
2



3



4



5



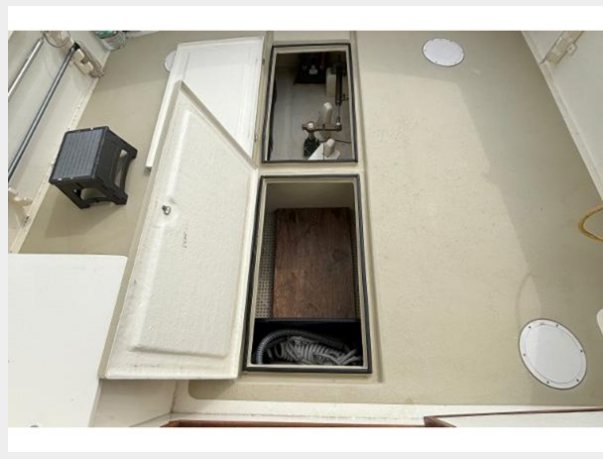
6



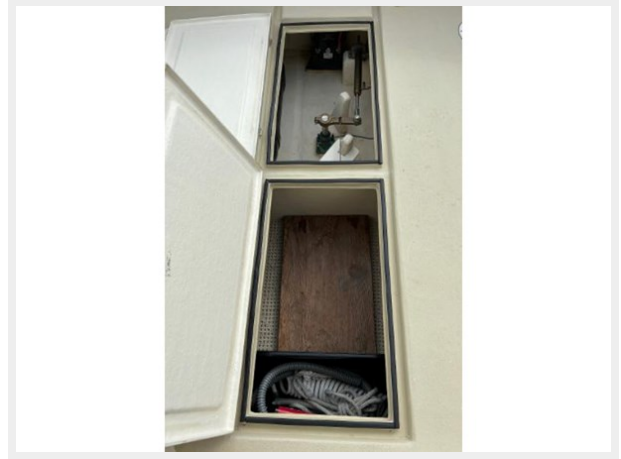
7



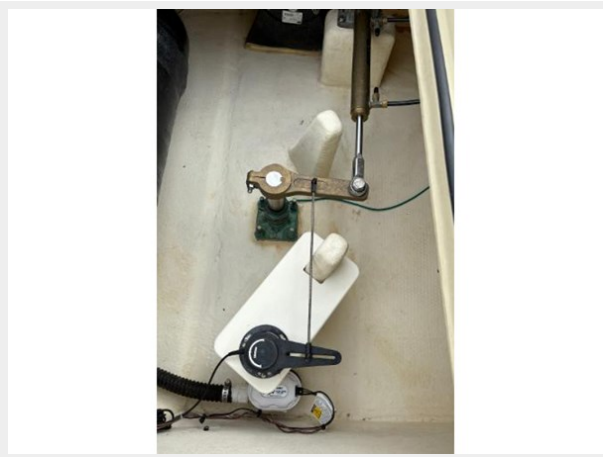
8



9



10



11



12



13



14



15



16



17



18



19



20



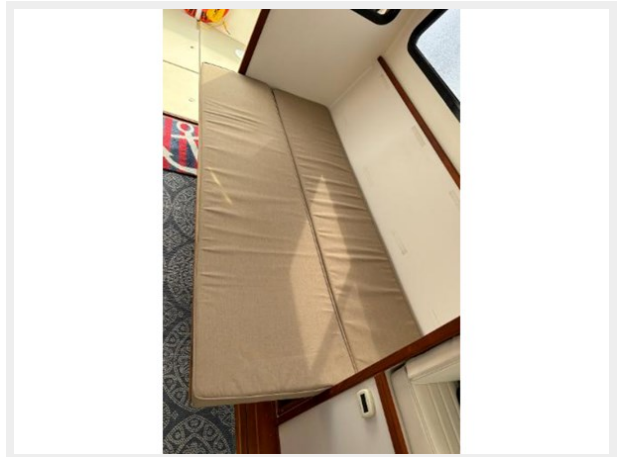
21



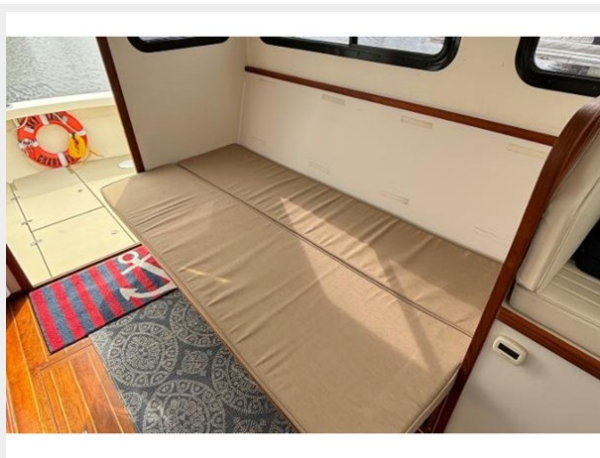
22



23



24



25



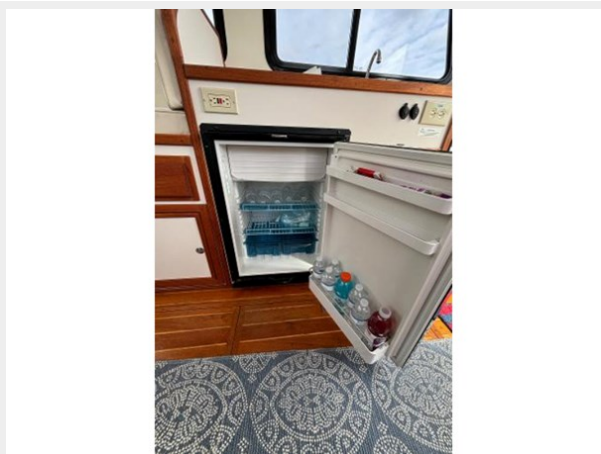
26



27



28



29



30



31



32



33



34



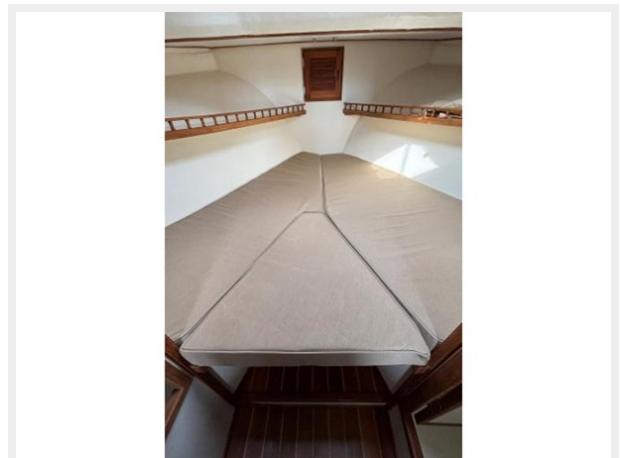
35



36



37



38



39



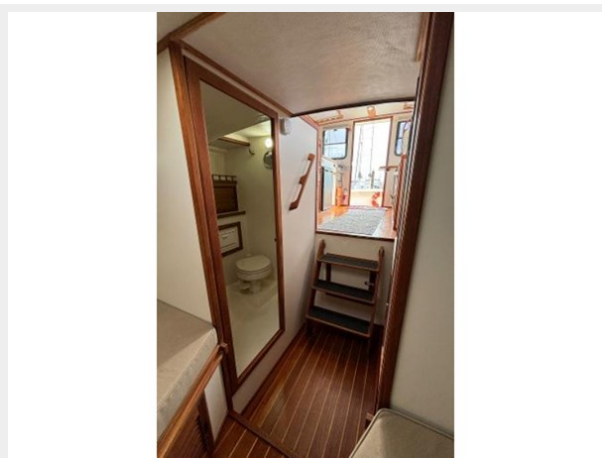
40



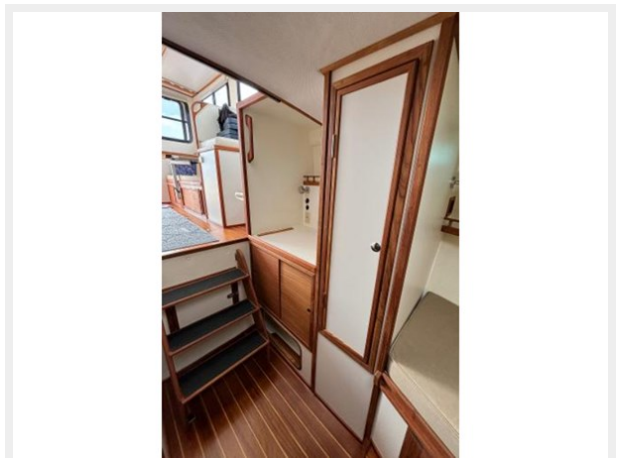
41



42



43



44



45



46



47



48

TEMP 77° WATER
WIND 14 BOAT TOTAL 14,500

RPM	BOAT		SPEC	
	G/H.	SPEED	CUMMINS	
1000	1.1	7	1.1	2:1 TRANS
1200	1.5	9.3	1.9	2424 PROP
1400	2.3	10.1	2.7	6. Temp 176°
1600	3.6	10.1	3.7	2800 RPM ON PAPS 47 PSI
1800	5.5	13.6	5.0	
2000	7.4	16.0	6.6	
2200	9.0	18.0	8.4	
2400	11.4	20.0	10.4	
2600	13.7	22.5	12.7	
2800	14.8	24.0	16.0	
3050	19.5	26.4	20.1	

CONTACTS

Andrey Shestakov, leading yacht broker of the sales department of Shestakov Yacht Sales Inc. Shestakov Yacht Sales Inc., the official representative of the Miami/Fort Lauderdale FL headquarters.

Contact details

Email: andrey@shestakovyachtsales.com

Web: shestakovyachtsales.com/en/

Telephones

USA: +1(954)274-4435

Office hours

Monday – Saturday: **9:00 - 21:00** EDT

Sunday: **closed**

Address



Harbour Towne Marina, 850 NE 3rd St,
STE 213, Dania, FL 33004