

JUST A HINT — VANQUISH YACHTS



Builder: VANQUISH YACHTS

Year Built: 2016

Model: Motor Yacht

Price: \$875,000 USD

Location: N/A

LOA: 50' (15.24mm)

Beam: 15.75

Max Draft: 3' 7" (1.09mm)

Our experienced yacht broker, Andrey Shestakov, will help you choose and buy a yacht that best suits your needs **JUST A HINT — VANQUISH YACHTS** from our catalogue. Presently, at Shestakov Yacht Sales Inc., we have a wide variety of yachts available on our sale's list. We also work in close contact with all the big yacht manufacturers from all over the world.

If you would like to buy a yacht **JUST A HINT — VANQUISH YACHTS** or would like help answering any questions concerning purchasing, selling or chartering a yacht, please call **+1(954)274-4435**

TABLE OF CONTENTS

TABLE OF CONTENTS	2
SPECIFICATIONS	4
Overview	4
Basic Information	4
Dimensions	4
Speed, Capacities and Weight	5
Accommodations	5
Hull and Deck Information	5
Engine Information	5
PHOTOS	6
1	6
2	6
4	6
3	6
5	6
6	6
7	7
8	7
10	7
9	7
11	7
12	7
13	8
14	8
15	8
16	8
17	8
18	8

19	9
20	9
21	9
22	9
23	9
24	9
25	10
26	10
28	10
27	10
29	10
30	10
31	11
32	11
33	11
34	11
CONTACTS	12
Contact details	12
Telephones	12
Office hours	12
Address	12

SPECIFICATIONS

Overview

The Vanquish 50 is handmade entirely out of aluminum. With lines like a Stealth fighter jet, this day boat projects an aggressive figure across the water. The cockpit contains a high sunroof that adds headroom, and the exterior space has an aft deck with room for eight people. There is also a foredeck area used for entertaining that can be shaded by a parasol. Inside is a galley, bathroom, and a cabin that sleeps two people. The Vanquish VQ50's performance ability matches that of her bomber jet aesthetic – she can bolt across the water at speeds of up to 40 knots, making her one of the fastest superyacht tenders around.

Key Features

10kw Cummins Onan generator

Sunshade umbrella

Enclosed cockpit with AC

Hardtop with electric sunroof

Joystick with skyhook

Basic Information

Category: Motor Yacht

Model Year: 2016

Year Built: 2016

Country: N/A

Dimensions

LOA: 50' (15.24mm)

Beam: 15.75

Max Draft: 3' 7" (1.09mm)

Speed, Capacities and Weight

Water Capacity: 105 Gallons

Fuel Capacity: 396 Gal Gallons

Accommodations

Total Cabins: 1

Total Heads: 1

Hull and Deck Information

Hull Material: Aluminum

Hull Color: Blue

Engine Information

Engines: 2

Manufacturer: Cummins

Engine Type: Inboard

Fuel Type: Diesel

PHOTOS

1



2



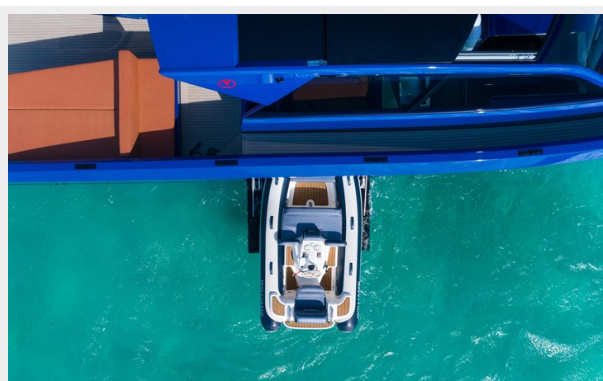
3



4



5



6



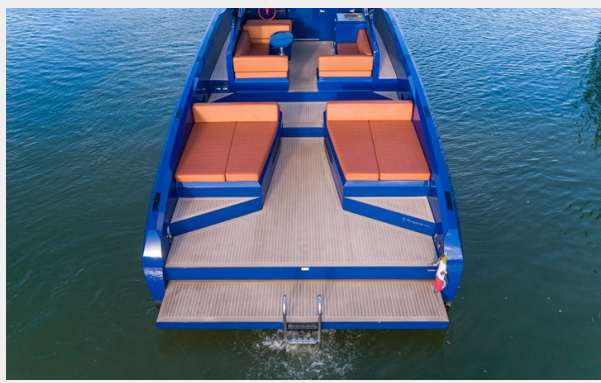
7



8



9



10



11



12



13



14



15



16



17



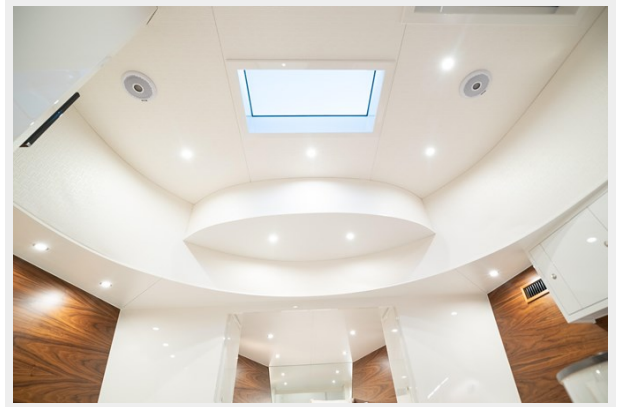
18



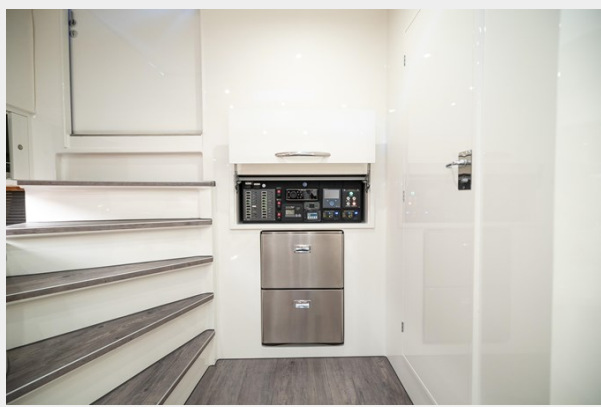
19



20



21



22



23



24



25



26



28



27



29



30



31



32



33



34



CONTACTS

Andrey Shestakov, leading yacht broker of the sales department of Shestakov Yacht Sales Inc. Shestakov Yacht Sales Inc., the official representative of the Miami/Fort Lauderdale FL headquarters.

Contact details

Email: andrey@shestakovyachtsales.com

Web: shestakovyachtsales.com/en/

Telephones

USA: +1(954)274-4435

Office hours

Monday – Saturday: **9:00 - 21:00** EDT

Sunday: **closed**

Address



Harbour Towne Marina, 850 NE 3rd St,
STE 213, Dania, FL 33004