

# 1998 MAGNUM MAGNUM 50 BESTIA — MAGNUM MARINE



**Builder:** MAGNUM MARINE

**Year Built:** 1998

**Model:** cruiser

**Price:** \$550,000 USD

**Location:** United States

**LOA:** 50' (15.24mm)

**Beam:** 13.5

**Max Draft:** 3' (0.91mm)

**Cruise Speed:** 50 Knots Kts. (58 MPH)

**Max Speed:** 71 Knots Kts. (82 MPH)

Our experienced yacht broker, Andrey Shestakov, will help you choose and buy a yacht that best suits your needs 1998 Magnum Magnum 50 Bestia — MAGNUM MARINE from our catalogue. Presently, at Shestakov Yacht Sales Inc., we have a wide variety of yachts available on our sale's list. We also work in close contact with all the big yacht manufacturers from all over the world.

If you would like to buy a yacht 1998 Magnum Magnum 50 Bestia — MAGNUM MARINE or would like help answering any questions concerning purchasing, selling or chartering a yacht, please call +1(954)274-4435

---

# TABLE OF CONTENTS

---

TABLE OF CONTENTS	2
SPECIFICATIONS	3
Overview	3
Basic Information	3
Dimensions	3
Speed, Capacities and Weight	3
Accommodations	4
Hull and Deck Information	4
Engine Information	4
PHOTOS	5
CONTACTS	10
Contact details	10
Telephones	10
Office hours	10
Address	10

---

# SPECIFICATIONS

---

## Overview

---

1998 Magnum Magnum 50 Bestia

Also called “Bestia”, or Beast! Bestia is characterized by her tremendous speed, acceleration and brute power.

The Magnum 50’ is a narrow beam, deep-vee, very heavy hull, generally equipped with DDC/MTU diesels 1350 HP each coupled to Arneson surface drives. The top speed can reach up to 74 MPH. Very impressive is her unbelievable seaworthiness in all weather conditions. She slices through the waves and can safely and comfortably make long crossings in rough seas, whilst large yachts remain in port.

In spite of her small size, the Magnum 50’ has appx. 7’ headroom and boasts a comfortable double cabin with Queen sized berth and plenty of closet space, a large head with stall shower, a salon, galley and crew cabin. The cockpit, with bolster helm and companion seats also features an L-shaped side and transom seat and sundeck.

---

## Basic Information

---

**Category:** cruiser

**Sub Category:** Express

**Model Year:** 1998

**Year Built:** 1998

**Country:** United States

---

## Dimensions

---

**LOA:** 50' (15.24mm)

**Beam:** 13.5

**Max Draft:** 3' (0.91mm)

---

## Speed, Capacities and Weight

---

**Cruise Speed:** 50 Knots Kts. (58 MPH)

**Max Speed:** 71 Knots Kts. (82 MPH)

**Water Capacity:** 150 Gallons

**Fuel Capacity:** 625 Gal Gallons

---

## Accommodations

---

**Total Berths:** 2

**Total Heads:** 2

---

## Hull and Deck Information

---

**Hull Material:** Fiberglass

**Hull Configuration:** Deep Vee

---

## Engine Information

---

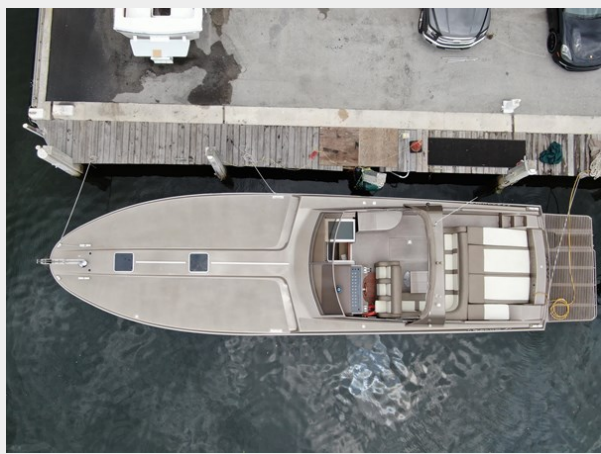
**Engines:** 2

**Manufacturer:** DDC/MTU

**Engine Type:** Inboard

**Fuel Type:** Diesel

# PHOTOS



















# CONTACTS

---

Andrey Shestakov, leading yacht broker of the sales department of Shestakov Yacht Sales Inc. Shestakov Yacht Sales Inc., the official representative of the Miami/Fort Lauderdale FL headquarters.

## Contact details

---

Email: [andrey@shestakovyachtsales.com](mailto:andrey@shestakovyachtsales.com)

Web: [shestakovyachtsales.com/en/](http://shestakovyachtsales.com/en/)

## Telephones

---

USA: +1(954)274-4435

## Office hours

---

Monday – Saturday: **9:00 - 21:00** EDT

Sunday: **closed**

## Address

---



Harbour Towne Marina, 850 NE 3rd St,  
STE 213, Dania, FL 33004