

350 SIGNATURE — CHAPARRAL



Builder: CHAPARRAL

Year Built: 2008

Model: cruiser

Price: \$235,000 CAD

Location: Canada

LOA: 37' (11.28mm)

Beam: 11.9

Min Draft: 2' 2" (0.64mm)

Max Draft: 3' 4" (1.01mm)

Cruise Speed: 25 Knots Kts. (29 MPH)

Max Speed: 30 Knots Kts. (35 MPH)

Our experienced yacht broker, Andrey Shestakov, will help you choose and buy a yacht that best suits your needs **350 SIGNATURE — CHAPARRAL** from our catalogue. Presently, at Shestakov Yacht Sales Inc., we have a wide variety of yachts available on our sale's list. We also work in close contact with all the big yacht manufacturers from all over the world.

If you would like to buy a yacht **350 SIGNATURE — CHAPARRAL** or would like help answering any questions concerning purchasing, selling or chartering a yacht, please call **+1(954)274-4435**

TABLE OF CONTENTS

TABLE OF CONTENTS	2
SPECIFICATIONS	4
Overview	4
Basic Information	4
Dimensions	4
Speed, Capacities and Weight	4
Accommodations	5
Hull and Deck Information	5
Engine Information	5
PHOTOS	6
IMG_2003	6
IMG_2004	6
IMG_2005	6
IMG_2007	6
IMG_2006	6
IMG_0118	6
IMG_2013	7
IMG_2008	7
IMG_2014	7
IMG_2009	7
IMG_2010	8
IMG_2011	8
IMG_2015	8
IMG_2016	8
IMG_2019	9
IMG_2012	9
IMG_2020	9
IMG_2018	9

IMG_2021	10
IMG_2022	10
IMG_2920	10
IMG_2916	10
IMG_2017	11
IMG_2835	11
IMG_2836	11
IMG_2838	11
IMG_2874	12
IMG_0130	12
IMG_2876	12
IMG_2810	12
IMG_2813	13
CONTACTS	14
Contact details	14
Telephones	14
Office hours	14
Address	14

SPECIFICATIONS

Overview

- Chaparral(s) are well-known for their above average finish, craftsmanship and Kevlar composite modified-V hull, the 350 Signature's cherry wood interior is of the utmost luxury, a superior finish of any boat in this class.
- Owned and cared for by a season yachtsman.
- Seller provides a valid survey with engine scans.
- Detailed documentation.
- This is a freshwater only vessel.
- Reason For Sale is sellers plan to move up in size.

Basic Information

Category: cruiser

Sub Category: Express

Model Year: 2008

Year Built: 2008

Country: Canada

Dimensions

LOA: 37' (11.28mm)

Beam: 11.9

Min Draft: 2' 2" (0.64mm)

Max Draft: 3' 4" (1.01mm)

Speed, Capacities and Weight

Cruise Speed: 25 Knots Kts. (29 MPH)

Cruise Speed Range: 200

Max Speed: 30 Knots Kts. (35 MPH)

Max Speed Range: 170 Kts.

Gross Tonnage: 14 Pounds

Water Capacity: 40 Gallons

Holding Tank: 28 Gal Gallons

Fuel Capacity: 240 Gal Gallons

Accommodations

Total Cabins: 1

Total Berths: 4

Sleeps: 6

Total Heads: 1

Hull and Deck Information

Hull Material: Kevlar Composite

Deck Material: Fiberglass

Hull Configuration: Monohull

Hull Color: Beige

Hull Designer: Chaparral Design Team

Interior Designer: Chaparral Design Team

Engine Information

Engines: 2

Manufacturer: Volvo Penta

Engine Type: I/O

Fuel Type: Gas

PHOTOS

IMG_2003



IMG_2004



IMG_2005



IMG_2007



IMG_2006



IMG_0118



IMG_2008



IMG_2013



IMG_2014



IMG_2009



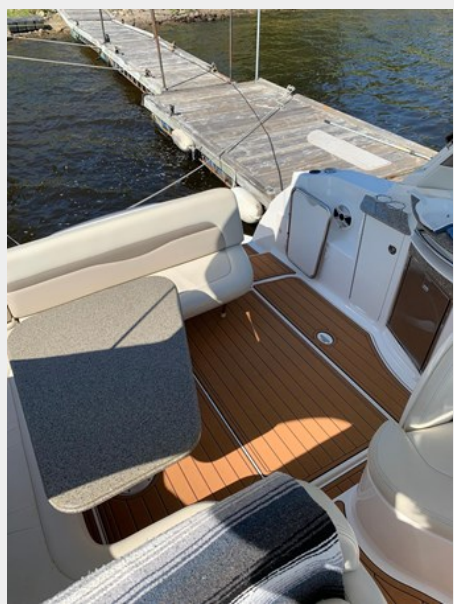
IMG_2010



IMG_2011



IMG_2015



IMG_2016



IMG_2012



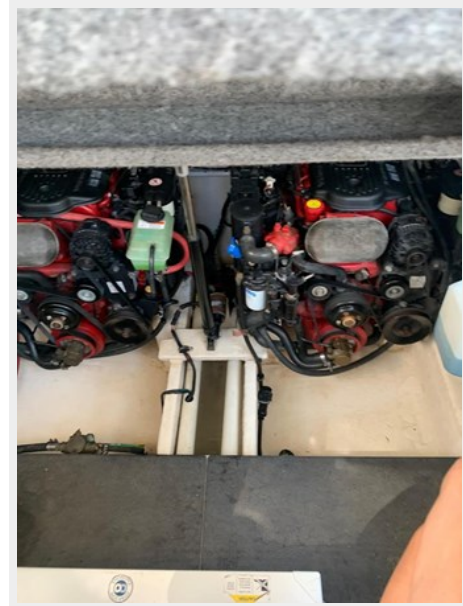
IMG_2019



IMG_2020



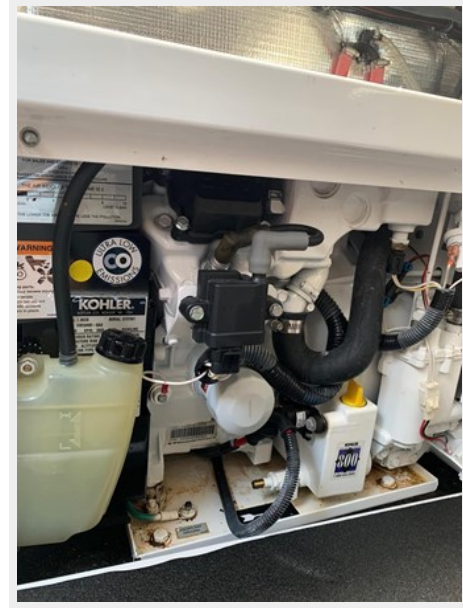
IMG_2018



IMG_2021



IMG_2022



IMG_2920



IMG_2916



IMG_2017



IMG_2835



IMG_2836



IMG_2838



IMG_0130



IMG_2874



IMG_2876



IMG_2810



IMG_2813



CONTACTS

Andrey Shestakov, leading yacht broker of the sales department of Shestakov Yacht Sales Inc. Shestakov Yacht Sales Inc., the official representative of the Miami/Fort Lauderdale FL headquarters.

Contact details

Email: andrey@shestakovyachtsales.com

Web: shestakovyachtsales.com/en/

Telephones

USA: +1(954)274-4435

Office hours

Monday – Saturday: **9:00 - 21:00** EDT

Sunday: **closed**

Address



Harbour Towne Marina, 850 NE 3rd St,
STE 213, Dania, FL 33004