

CHORUSLINE — PERSHING



Builder: PERSHING

Year Built: 2019

Model: Motor Yacht

Price: \$21,500,000 USD

Location: China

LOA: 142' 1" (43.3mm)

Beam: 27.88

Max Draft: 7' (2.13mm)

Cruise Speed: 28 Knots Kts. (32 MPH)

Max Speed: 38 Knots Kts. (44 MPH)

Our experienced yacht broker, Andrey Shestakov, will help you choose and buy a yacht that best suits your needs **Chorusline — PERSHING** from our catalogue. Presently, at Shestakov Yacht Sales Inc., we have a wide variety of yachts available on our sale's list. We also work in close contact with all the big yacht manufacturers from all over the world.

If you would like to buy a yacht **Chorusline — PERSHING** or would like help answering any questions concerning purchasing, selling or chartering a yacht, please call **+1(954)274-4435**

TABLE OF CONTENTS

TABLE OF CONTENTS	2
SPECIFICATIONS	5
Basic Information	5
Dimensions	5
Speed, Capacities and Weight	5
Accommodations	5
Hull and Deck Information	5
Engine Information	6
PHOTOS	7
Pershing 140 night view 8	7
Pershing 140 running shot 5	7
Pershing 140 running shot 2	7
Pershing 140 night view 4	7
p140_chorusline-1279-Modifica-2-media room	7
Pershing 140 night view 3	7
p140_chorusline_main_salon-3	8
p140_chorusline_main_salon-1	8
p140_chorusline_media_room	8
p140_chorusline-1207-media room	8
p140_chorusline-1234-salon	8
p140_chorusline_dining_room	8
bp31khg6sbyos3otoqtw_chorusline-superyacht-interior-3-1260x1760	9
p140_chorusline_master_cabin	9
p140_chorusline-1562	9
p140_chorusline_master_cabin_toilet	9
p140_chorusline_vip_cabin_right	9
p140_chorusline-1480	9
p140_chorusline_triple_stern_cabin_left_toilet	10

p140_chorusline_triple_stern_cabin_left	10
p140_chorusline-1462	10
p140_chorusline_vip_cabin_toilet	10
p140_chorusline_triple_bow_cabin_left	10
mns1oxistjacvivr9l98_chorusline-superyacht-interior-beachclub-2-1920x1080	10
Pershing 140 cockpit area 1	11
Pershing 140 beach club view 2	11
Pershing 140 cockpit area 2	11
Pershing 140 beach club view 1	11
Pershing 140 cockpit area 3	11
Pershing 140 sundeck 2	11
Pershing 140 sundeck 3	12
Pershing 140 sundeck	12
Pershing 140 bow area	12
Pershing 140 exterior pilot house	12
Pershing 140 beach club view 3	12
Pershing 140 night view 10	12
Pershing 140 beach club view 4	13
bgox3pywqz6ku2wq1ews_chorusline-superyacht-interior-beach-club-1920x1080	13
Pershing 140 night view 12	13
Pershing 140 night view 13	13
Pershing 140 night view 9	13
Pershing 140 running shot 1	13
Pershing 140 running shot 3	14
Pershing 140 running shot 8	14
Pershing 140 night view 2	14
Pershing 140 running shot 4	14
Pershing 140 running shot 6	15
Pershing 140 running shot 9	15

Pershing 140 night view 1	15
Pershing 140 lateral view 1	15
p140_chorusline-0914	16
p140_chorusline-1372	16
p140_chorusline_galley	16
p140_chorusline-1393	16
PRE_GA_JUN23_EGM_Page_1	16
PRE_GA_JUN23_EGM_Page_2	16
CONTACTS	17
Contact details	17
Telephones	17
Office hours	17
Address	17

SPECIFICATIONS

Basic Information

Category: Motor Yacht

Model Year: 2019

Year Built: 2019

Country: China

Dimensions

LOA: 142' 1" (43.3mm)

Beam: 27.88

Max Draft: 7' (2.13mm)

Speed, Capacities and Weight

Cruise Speed: 28 Knots Kts. (32 MPH)

Max Speed: 38 Knots Kts. (44 MPH)

Gross Tonnage: 380 Pounds

Water Capacity: 3000 Gallons

Fuel Capacity: 6868.47 Gal Gallons

Fuel Consumption: 343.42 Gal Gallons

Accommodations

Total Cabins: 4

Total Berths: 4

Sleeps: 10

Total Heads: 4

Crew Cabin: 7

Hull and Deck Information

Hull Material: Aluminum

Exterior Designer: Fulvio De Simoni

Interior Designer: Italprojects srl

Engine Information

Engines: 4

Manufacturer: MTU

Fuel Type: Diesel

PHOTOS

Pershing 140 night view 8



Pershing 140 running shot 5



Pershing 140 running shot 2



Pershing 140 night view 4



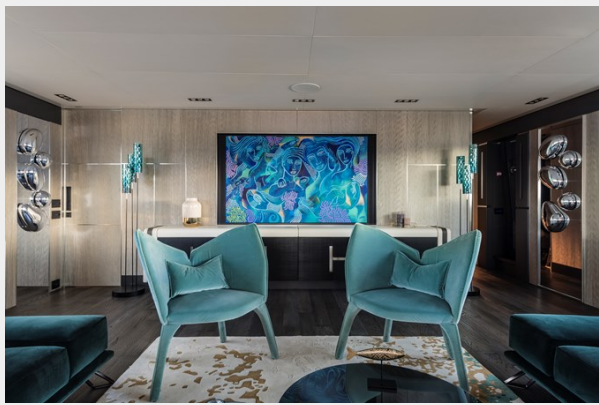
Pershing 140 night view 3



p140_chorusline-1279-Modifica-2-media room



p140_chorusline_main_salon-3



p140_chorusline_main_salon-1



p140_chorusline_media_room



p140_chorusline-1207-media room



p140_chorusline-1234-salon



p140_chorusline_dining_room



**bp31kkg6sbyos3otoqtw_chorusline-
superyacht-interior-3-1260x1760**



p140_chorusline_master_cabin



p140_chorusline-1562



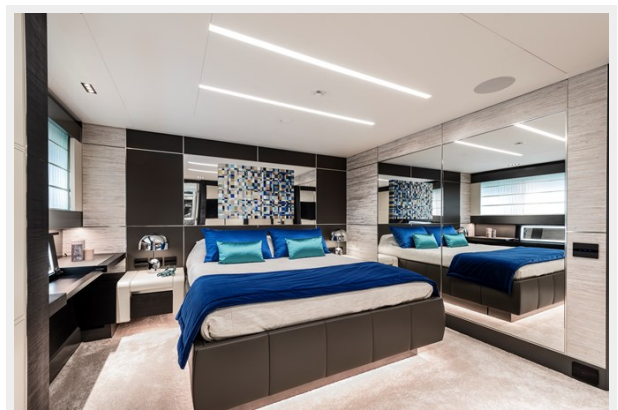
p140_chorusline_master_cabin_toilet



p140_chorusline_vip_cabin_right



p140_chorusline-1480



p140_chorusline_triple_stern_cabin_left_toilet p140_chorusline_triple_stern_cabin_left



p140_chorusline-1462

p140_chorusline_vip_cabin_toilet



p140_chorusline_triple_bow_cabin_left

mns10xistjacvivr9198_chorusline-superyacht-interior-beachclub-2-1920x1080



Pershing 140 cockpit area 1



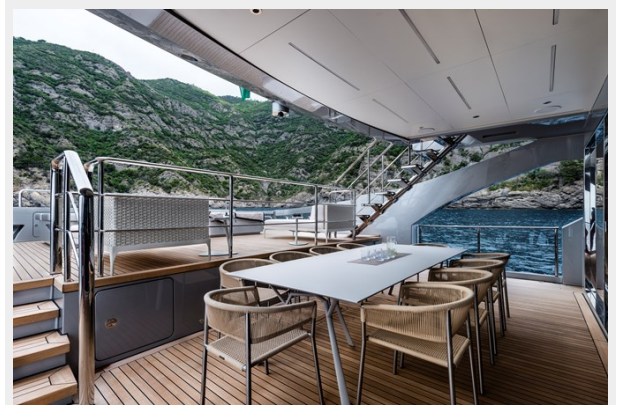
Pershing 140 beach club view 2



Pershing 140 beach club view 1



Pershing 140 cockpit area 2



Pershing 140 cockpit area 3



Pershing 140 sundeck 2



Pershing 140 sundeck 3



Pershing 140 sundeck



Pershing 140 bow area



Pershing 140 exterior pilot house



Pershing 140 beach club view 3



Pershing 140 night view 10



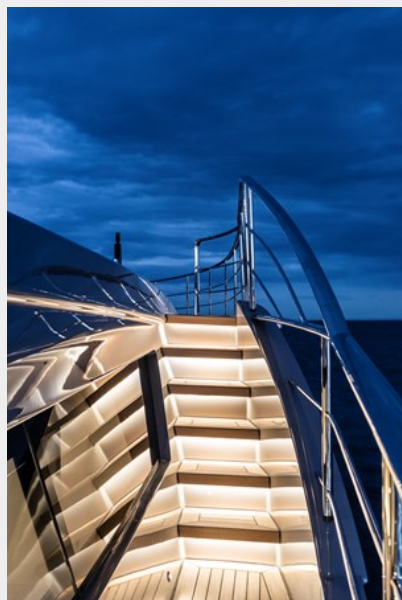
**bgox3pywqz6ku2wq1ews_chorusline-
superyacht-interior-beach-club-1920x1080**



Pershing 140 beach club view 4



Pershing 140 night view 12



Pershing 140 night view 13



Pershing 140 night view 9



Pershing 140 running shot 1



Pershing 140 running shot 3



Pershing 140 running shot 8



Pershing 140 night view 2



Pershing 140 running shot 4



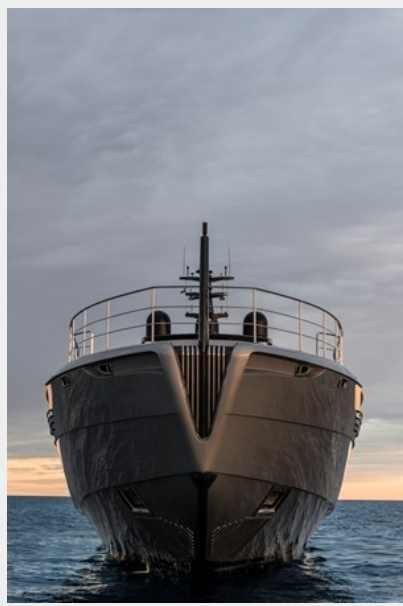
Pershing 140 running shot 6



Pershing 140 running shot 9



Pershing 140 night view 1



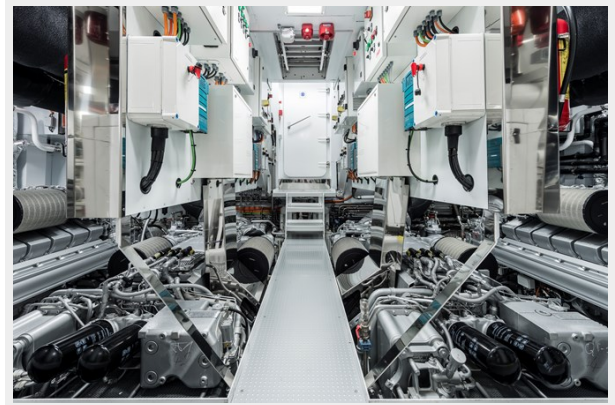
Pershing 140 lateral view 1



p140_chorusline-0914



p140_chorusline-1372



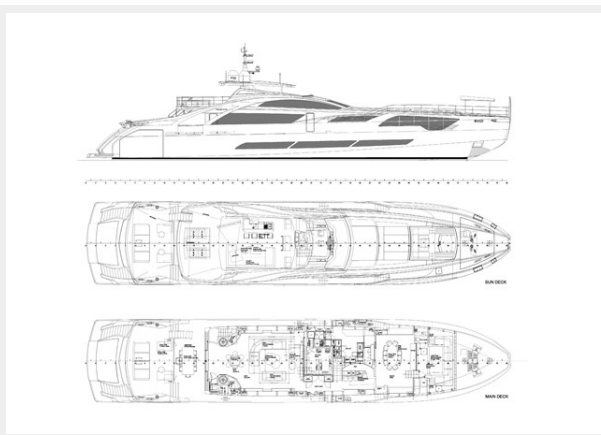
p140_chorusline_galley



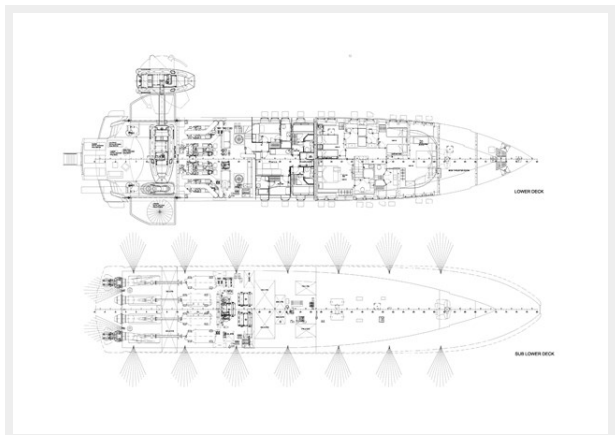
p140_chorusline-1393



PRE_GA_JUN23_EGM_Page_1



PRE_GA_JUN23_EGM_Page_2



CONTACTS

Andrey Shestakov, leading yacht broker of the sales department of Shestakov Yacht Sales Inc. Shestakov Yacht Sales Inc., the official representative of the Miami/Fort Lauderdale FL headquarters.

Contact details

Email: andrey@shestakovyachtsales.com

Web: shestakovyachtsales.com/en/

Telephones

USA: +1(954)274-4435

Office hours

Monday – Saturday: **9:00 - 21:00** EDT

Sunday: **closed**

Address



Harbour Towne Marina, 850 NE 3rd St,
STE 213, Dania, FL 33004