

QUEEN ANA — AZIMUT YACHTS



Builder: AZIMUT YACHTS

Year Built: 2019

Model: Flybridge

Price: €5,550,000 EUR

Location: Italy

LOA: 87' (26.52mm)

Beam: 21.58

Min Draft: 4' 9" (1.45mm)

Max Draft: 6' 4" (1.93mm)

Cruise Speed: 24 Knots Kts. (28 MPH)

Max Speed: 28 Knots Kts. (32 MPH)

Our experienced yacht broker, Andrey Shestakov, will help you choose and buy a yacht that best suits your needs **Queen Ana — AZIMUT YACHTS** from our catalogue. Presently, at Shestakov Yacht Sales Inc., we have a wide variety of yachts available on our sale's list. We also work in close contact with all the big yacht manufacturers from all over the world.

If you would like to buy a yacht **Queen Ana — AZIMUT YACHTS** or would like help answering any questions concerning purchasing, selling or chartering a yacht, please call **+1(954)274-4435**

TABLE OF CONTENTS

TABLE OF CONTENTS	2
SPECIFICATIONS	3
Overview	3
Basic Information	3
Dimensions	3
Speed, Capacities and Weight	4
Accommodations	4
Hull and Deck Information	4
Engine Information	4
PHOTOS	5
CONTACTS	12
Contact details	12
Telephones	12
Office hours	12
Address	12

SPECIFICATIONS

Overview

Built by Azimut in Italy and delivered in 2019. Her interior is styled by design house Achille Salvagni while the exterior design is the work of Stefano Righini.

The Azimut 27 Metri has been designed to comfortably accommodate up to 10 guests in 5 suites. She is also capable of carrying up to 4 crew onboard to ensure a relaxed luxury yacht experience.

Powered by twin diesel MAN 1,900hp engines, she comfortably cruises at 24 knots, reaches a maximum speed of 28 knots.

Key Features

- Only privately used no charters at all and one owner since delivery
- Very little use, only 1000 hours on main engines
- Kept ashore during winter period
- ANG power system frequency converter: allows the MY to plug in at any dock all over the world
- Stabilizing Fins
- 5 Staterooms layout including a master stateroom on main deck
- Free standing furniture by Paola Lenti

Basic Information

Category: Flybridge

Sub Category: Flybridge

Model Year: 2019

Year Built: 2019

Country: Italy

Dimensions

LOA: 87' (26.52mm)

LWL: 74' 3" (22.63mm)

Beam: 21.58

Min Draft: 4' 9" (1.45mm)

Max Draft: 6' 4" (1.93mm)

Speed, Capacities and Weight

Cruise Speed: 24 Knots Kts. (28 MPH)

Max Speed: 28 Knots Kts. (32 MPH)

Water Capacity: 528 Gallons

Holding Tank: 225 Gal Gallons

Fuel Capacity: 21509 Gal Gallons

Accommodations

Total Cabins: 5

Total Berths: 7

Total Heads: 5

Hull and Deck Information

Hull Material: Fiberglass

Engine Information

Engines: 2

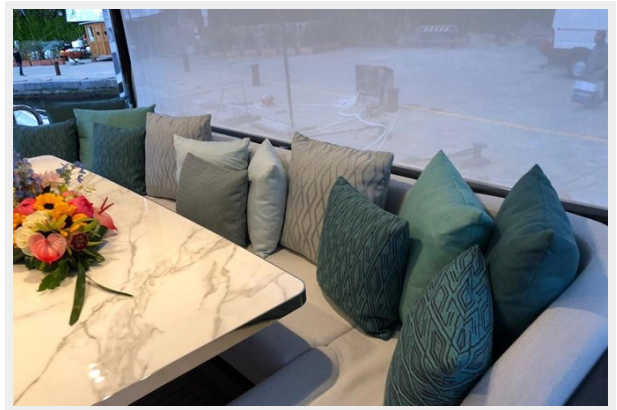
Manufacturer: MAN

Engine Type: Inboard

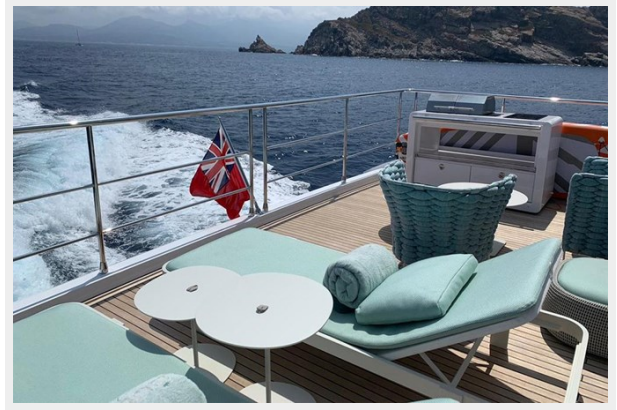
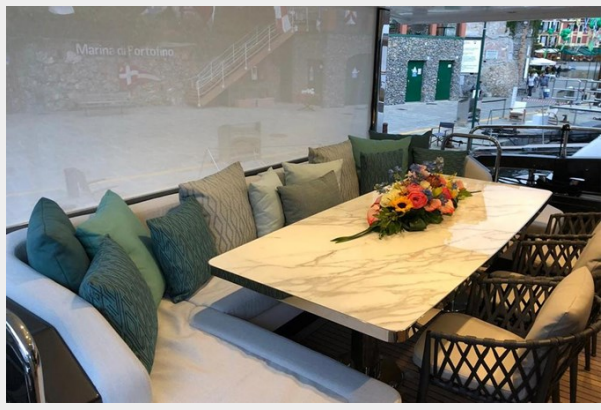
Fuel Type: Diesel

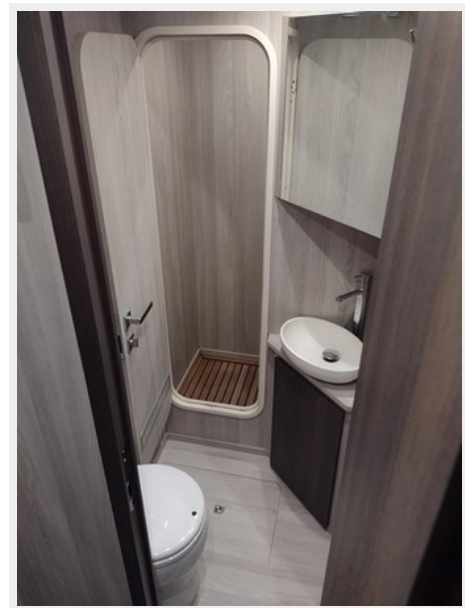
PHOTOS

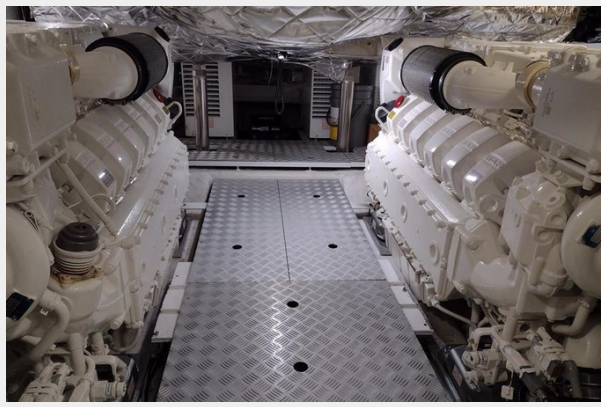














CONTACTS

Andrey Shestakov, leading yacht broker of the sales department of Shestakov Yacht Sales Inc. Shestakov Yacht Sales Inc., the official representative of the Miami/Fort Lauderdale FL headquarters.

Contact details

Email: andrey@shestakovyachtsales.com

Web: shestakovyachtsales.com/en/

Telephones

USA: +1(954)274-4435

Office hours

Monday – Saturday: **9:00 - 21:00** EDT

Sunday: **closed**

Address



Harbour Towne Marina, 850 NE 3rd St,
STE 213, Dania, FL 33004