

## DRINKER — RINKER



**Builder:** RINKER

**Year Built:** 2009

**Model:** cruiser

**Price:** PRICE ON APPLICATION

**Location:** Canada

**LOA:** 40' (12.19mm)

**Beam:** 13.33

**Min Draft:** 2' (0.61mm)

**Max Draft:** 3' (0.91mm)

**Cruise Speed:** 22 Knots Kts. (25 MPH)

**Max Speed:** 32 Knots Kts. (37 MPH)

Our experienced yacht broker, Andrey Shestakov, will help you choose and buy a yacht that best suits your needs **Drinker — RINKER** from our catalogue. Presently, at Shestakov Yacht Sales Inc., we have a wide variety of yachts available on our sale's list. We also work in close contact with all the big yacht manufacturers from all over the world.

If you would like to buy a yacht **Drinker — RINKER** or would like help answering any questions concerning purchasing, selling or chartering a yacht, please call **+1(954)274-4435**

# TABLE OF CONTENTS

TABLE OF CONTENTS	2
SPECIFICATIONS	4
Overview	4
Basic Information	4
Dimensions	4
Speed, Capacities and Weight	4
Accommodations	5
Hull and Deck Information	5
Engine Information	5
PHOTOS	6
2	6
3	6
5	6
4	6
6	7
7	7
8	7
9	7
10	8
11	8
12	8
13	8
14	9
15	9
16	9
17	9
19	10
18	10

---

20	10
21	10
22	11
23	11
<b>CONTACTS</b>	<b>12</b>
Contact details	12
Telephones	12
Office hours	12
Address	12

---

# SPECIFICATIONS

---

## Overview

---

'DRINKER' a 2009 Rinker 400 EC

Extremely functional stern drive cruiser. Called the 390 when she was originally introduced in 2006. "DRINKER" will not disappoint. equipped with hardtop. SeaTeak synthetic decking. SUPER upgraded audio !!! when you board this vessel..... its time to party !!!

blue vinyl wrap hull. Brand NEW out drives. Twin iPadPro navigation with vessel view. currently sitting with 1400 hrs

Hardtop

## Basic Information

---

**Category:** cruiser

**Sub Category:** Express

**Model Year:** 2009

**Year Built:** 2009

**Country:** Canada

## Dimensions

---

**LOA:** 40' (12.19mm)

**Beam:** 13.33

**Min Draft:** 2' (0.61mm)

**Max Draft:** 3' (0.91mm)

## Speed, Capacities and Weight

---

**Cruise Speed:** 22 Knots Kts. (25 MPH)

**Cruise Speed Range:** 180

**Max Speed:** 32 Knots Kts. (37 MPH)

**Max Speed Range:** 140 Kts.

**Gross Tonnage:** 15 Pounds

**Water Capacity:** 50 Gallons

**Holding Tank:** 45 Gal Gallons

**Fuel Capacity:** 300 Gal Gallons

---

## Accommodations

---

**Total Cabins:** 2

**Total Berths:** 3

**Sleeps:** 6

**Total Heads:** 2

---

## Hull and Deck Information

---

**Hull Material:** Fiberglass

**Deck Material:** Fiberglass

**Hull Configuration:** Monohull

**Hull Designer:** Rinker

**Interior Designer:** Rinker

---

## Engine Information

---

**Engines:** 2

**Manufacturer:** Mercruiser

**Engine Type:** I/O

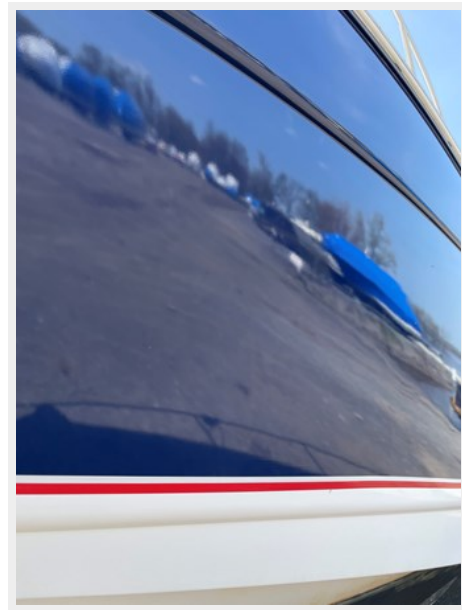
**Fuel Type:** Gas/Petrol

# PHOTOS

2



3



4



5



6



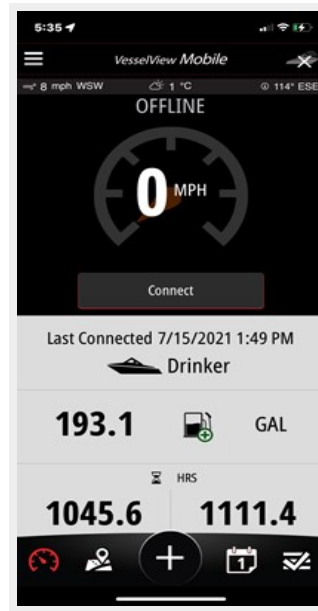
7



8



9



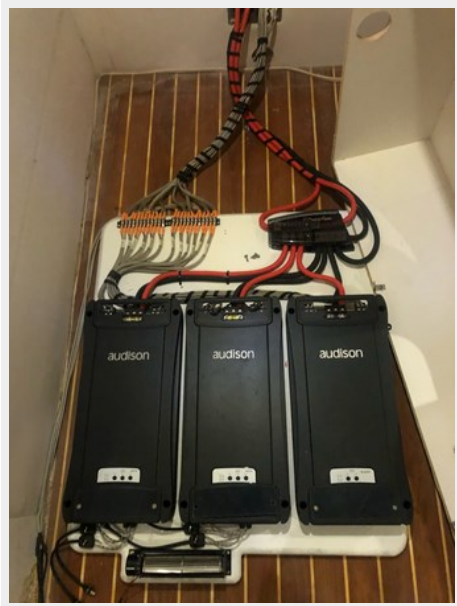
10



11



12



13





14



15



16



17



18



19



20



21



22



23



# CONTACTS

---

Andrey Shestakov, leading yacht broker of the sales department of Shestakov Yacht Sales Inc. Shestakov Yacht Sales Inc., the official representative of the Miami/Fort Lauderdale FL headquarters.

## Contact details

---

Email: [andrey@shestakovyachtsales.com](mailto:andrey@shestakovyachtsales.com)

Web: [shestakovyachtsales.com/en/](http://shestakovyachtsales.com/en/)

## Telephones

---

USA: +1(954)274-4435

## Office hours

---

Monday – Saturday: **9:00 - 21:00** EDT

Sunday: **closed**

## Address

---



Harbour Towne Marina, 850 NE 3rd St,  
STE 213, Dania, FL 33004