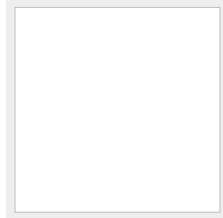


2024 ARKSEN 85 - SAN DIEGO — ARKSEN



Builder: ARKSEN

Year Built: 2024

Model: Motor Yacht

Price: Price on Application

Location: United States

LOA: 89' 5" (27.25mm)

Beam: 23

Max Draft: 5' 1" (1.55mm)

Cruise Speed: 10 Knots Kts. (12 MPH)

Max Speed: 14 Knots Kts. (16 MPH)

Our experienced yacht broker, Andrey Shestakov, will help you choose and buy a yacht that best suits your needs **2024 Arksen 85 - San Diego — ARKSEN** from our catalogue. Presently, at Shestakov Yacht Sales Inc., we have a wide variety of yachts available on our sale's list. We also work in close contact with all the big yacht manufacturers from all over the world.

If you would like to buy a yacht **2024 Arksen 85 - San Diego — ARKSEN** or would like help answering any questions concerning purchasing, selling or chartering a yacht, please call **+1(954)274-4435**

TABLE OF CONTENTS

TABLE OF CONTENTS	2
SPECIFICATIONS	3
Overview	3
Basic Information	3
Dimensions	4
Speed, Capacities and Weight	4
Accommodations	4
Hull and Deck Information	4
Engine Information	4
PHOTOS	5
CONTACTS	7
Contact details	7
Telephones	7
Office hours	7
Address	7

SPECIFICATIONS

Overview

2024 Arksen 85The Arksen 85 is amongst the safest, most capable and robust vessels in her class. A remarkably efficient long-range explorer with an extensive standard specification, she is capable of competently embarking on worldwide adventures with a high degree of autonomy or equally at home weekend cruising with family and friends.The first hull in the Arksen 85 range of aluminium expedition yachts, named Project Ocean is listed for sale.Own 50% of this exceptional vessel with a 1/2 fractional ownership or buy it fully. Built by British shipyard Arksen, the flagship explorer is due to be launched on the Isle of Wight later 2023. Design is by Humphreys Design with an interior by Design Unlimited, both based in the UK.Project Ocean accommodates six guests in three staterooms, comprising a master suite with a private office, a port guest cabin that can be configured as a double, twin or triple and a starboard guest cabin that can be configured as a single or twin. There is a single twin crew cabin. The galley is open plan to the saloon and dining area, the whole area benefiting from panoramic views.Humphreys is renowned for his work in hydrodynamics, with race-winning sailing yachts in his portfolio, and his naval architects have come up with "a very efficient low displacement/length ratio hull form and incorporating features such as twisted flow rudders to minimize resistance".The hybrid vessel can switch to zero emissions mode and silent running as and when required. The broker said: "Its advanced hybrid propulsion system, state-of-the-art stabilization technology and exemplary systems engineering optimize efficiency while reducing emissions, noise and vibrations".The explorer yacht for sale is MCA compliant and has a 7,000 nautical mile range, under a Praxis hybrid system. There is stowage for a tender of up to 5.5 metres LOA and toys.Designed for Explorers, Made for AdventureThe Arksen 85 is primarily designed as a long-range explorer vessel, capable of accessing remote areas and operating safely in extreme environments but is equally capable when cruising in more accessible waters. Every aspect of the vessel design and construction is undertaken to enable operation in a wide range of conditions including:Summer operation in high latitudes with low sea and air temperaturesTropical operation with high temperatures and humidityOperation in adverse weather, high winds and rough seas • Extended periods in remote regions without external supportFull time, permanent, liveaboard usage

Basic Information

Category: Motor Yacht	Model Year: 2024
Year Built: 2024	Country: United States

Dimensions

LOA: 89' 5" (27.25mm)	LWL: 85' 4" (26.01mm)
Beam: 23	Max Draft: 5' 1" (1.55mm)

Speed, Capacities and Weight

Cruise Speed: 10 Knots Kts. (12 MPH)	Max Speed: 14 Knots Kts. (16 MPH)
Water Capacity: 1574 Gallons	Holding Tank: 476 Gal Gallons
Fuel Capacity: 2372 Gal Gallons	

Accommodations

Total Cabins: 4	Total Heads: 4
-----------------	----------------

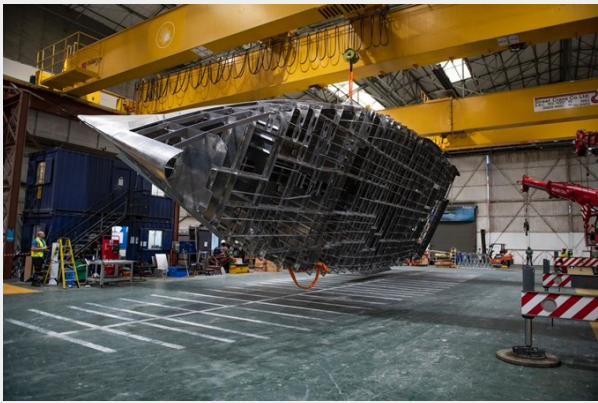
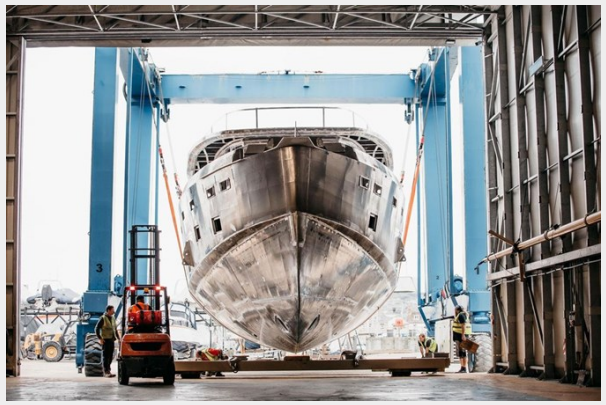
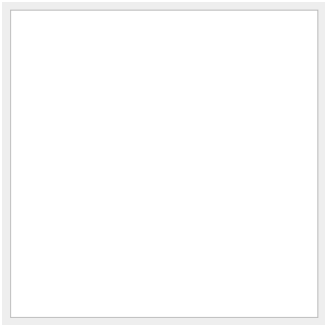
Hull and Deck Information

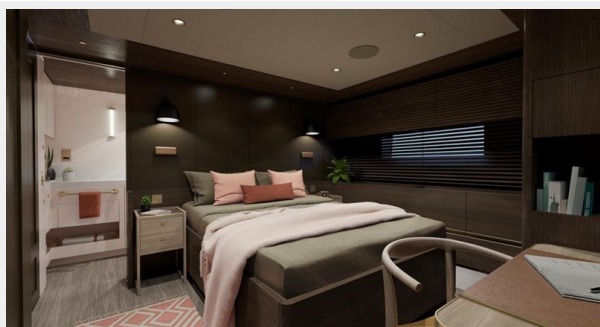
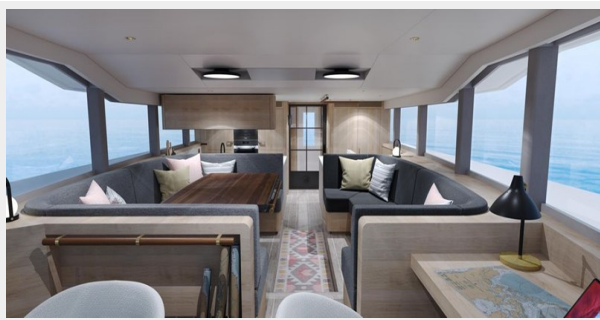
Hull Material: Aluminum	Exterior Designer: Humphreys Design
Interior Designer: Design Unlimited	

Engine Information

Engines: 2	Manufacturer: PRAXIS
Fuel Type: Diesel	

PHOTOS





CONTACTS

Andrey Shestakov, leading yacht broker of the sales department of Shestakov Yacht Sales Inc. Shestakov Yacht Sales Inc., the official representative of the Miami/Fort Lauderdale FL headquarters.

Contact details

Email: **andrey@shestakovyachtsales.com**

Web: shestakovyachtsales.com/en/

Telephones

USA: **+1(954)274-4435**

Office hours

Monday – Saturday: **9:00 - 21:00 EDT**

Sunday: **closed**

Address



Harbour Towne Marina, 850 NE 3rd St,
STE 213, Dania, FL 33004