

EVO R4 — EVO YACHTS



Builder: EVO YACHTS

LOA: 43' (13.11m)

Year Built: 2024

Max Speed: 32 Knots Kts. (37 MPH)

Model: Motor Yacht

Price: Price on Application

Location: United States

Our experienced yacht broker, Andrey Shestakov, will help you choose and buy a yacht that best suits your needs **EVO R4 — EVO YACHTS** from our catalogue. Presently, at Shestakov Yacht Sales Inc., we have a wide variety of yachts available on our sale's list. We also work in close contact with all the big yacht manufacturers from all over the world.

If you would like to buy a yacht **EVO R4 — EVO YACHTS** or would like help answering any questions concerning purchasing, selling or chartering a yacht, please call **+1(954)274-4435**

TABLE OF CONTENTS

TABLE OF CONTENTS	2
SPECIFICATIONS	3
Overview	3
Basic Information	3
Dimensions	3
Speed, Capacities and Weight	4
Accommodations	4
Hull and Deck Information	4
Engine Information	4
PHOTOS	5
CONTACTS	7
Contact details	7
Telephones	7
Office hours	7
Address	7

SPECIFICATIONS

Overview

It takes 30 seconds to turn sleek and straight lines into a high-tech nautical marvel. In other words, just a tap and you have your private island. Take a bow, and make it unique. The bow is designed to keep the lines as clean as possible, with a large locker that can accommodate the cleats, anchor and fenders under the deck. The hydraulic opening of the anchor locker ensures maximum noise reduction while the lifting nose prevents the anchor from wounding in or out. Set the course and run. A smooth teak panel features the helm station, which is designed to create a fast and responsive steering experience in a pleasant setting with a large windscreen and an ultra-comfortable seat. Set the navigation systems, take the wheel, check your course and get ready for an exciting ride. Beauty is for sharing. The R4 welcomes spending different moments of the day aboard. The solid teak cockpit offers different configurations to adapt to your unique lifestyle. The cockpit can accommodate a kitchen with sink and induction hobs, barbecue or Teppanyaki plate, an electrical and retractile table, sofas, poufs. The aft sundeck can accommodate up to 8 sunbeds with floating cushions and retractile deckchairs. You can add some shade with a T-Top or different awnings. A 180L ice box, leather sofas and a high-end S Fusion audio system with 4 loudspeakers and sub-woofer create the perfect setting for a glamorous party on the sea. Engines for performances with high fuel efficiency. The R4 can be equipped with two different, powerful engines: a Volvo Penta IPS 600 435 HP or a Volvo Penta IPS 500 370 HP. The deadrise 18° angle of the hull ensures a high fuel efficiency with an autonomy of 300 nautical miles. A simple touch and 30 seconds are what it takes to open the hydraulic XTensions bulwarks and turn the beach area into a 270 square feet terrace. It becomes a lounge, a sundeck, open space for parties. Anyway, you won't get unnoticed. The sundeck can accommodate a Transformer platform which rotates by 270° to support boarding and disembarking, diving, or staying even closer to the water.

Basic Information

Category: Motor Yacht	Model Year: 2024
Year Built: 2024	Country: United States

Dimensions

LOA: 43' (13.11mm)

Speed, Capacities and Weight

Max Speed: 32 Knots Kts. (37 MPH)

Fuel Capacity: 554 Gal Gallons

Accommodations

Sleeps: 12

Hull and Deck Information

Hull Material: Fiberglass

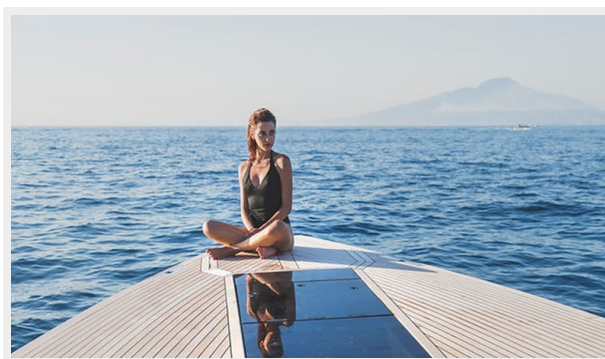
Engine Information

Engines: 2

Manufacturer: Volvo Penta

Fuel Type: Diesel

PHOTOS





CONTACTS

Andrey Shestakov, leading yacht broker of the sales department of Shestakov Yacht Sales Inc. Shestakov Yacht Sales Inc., the official representative of the Miami/Fort Lauderdale FL headquarters.

Contact details

Email: **andrey@shestakovyachtsales.com**

Web: shestakovyachtsales.com/en/

Telephones

USA: **+1(954)274-4435**

Office hours

Monday – Saturday: **9:00 - 21:00 EDT**

Sunday: **closed**

Address



Harbour Towne Marina, 850 NE 3rd St,
STE 213, Dania, FL 33004