

BAYLINER — BAYLINER



Builder: BAYLINER

Year Built: 2008

Model: cruiser

Price: PRICE ON APPLICATION

Location: United States

LOA: 26' (7.92mm)

Beam: 8.5

Min Draft: 1' 10" (0.56mm)

Max Draft: 3' 3" (0.99mm)

Our experienced yacht broker, Andrey Shestakov, will help you choose and buy a yacht that best suits your needs **Bayliner — BAYLINER** from our catalogue. Presently, at Shestakov Yacht Sales Inc., we have a wide variety of yachts available on our sale's list. We also work in close contact with all the big yacht manufacturers from all over the world.

If you would like to buy a yacht **Bayliner — BAYLINER** or would like help answering any questions concerning purchasing, selling or chartering a yacht, please call **+1(954)274-4435**

TABLE OF CONTENTS

TABLE OF CONTENTS	2
SPECIFICATIONS	3
Overview	3
Basic Information	3
Dimensions	3
Speed, Capacities and Weight	3
Accommodations	4
Hull and Deck Information	4
Engine Information	4
PHOTOS	5
Bayliner 265 - Looking Forward	5
Bayliner 265 - Looking Aft	5
Bayliner 265 - Galley	5
Bayliner 265 - Galley Sink	5
Bayliner 265 - Salon	5
Bayliner 265 - Salon Table	5
Bayliner 265 - Forward Cabin	6
Bayliner 265 - Aft Cabin	6
Bayliner 265 - Head	6
Bayliner 265 - Helm	6
Bayliner 265 - Cockpit	6
CONTACTS	7
Contact details	7
Telephones	7
Office hours	7
Address	7

SPECIFICATIONS

Overview

Engine Serviced and ready for 2024 Cruising! For Sale by Waterline Boats / Boatshed Seattle Benefit from an immersive experience, featuring 4 Virtual Tours, 1 Video, and 89 photos, along with comprehensive specs and expert broker's commentary. All of this is available for the Bayliner 265 Cruiser - Contact our Waterline Boats Broker! Boat REF# · 331317 Length · 26'0" Year · 2008 Construction · GRP Underwater profile · Planing Sleeping berths · 4 Engine · 1 x gasoline 260hp, MerCruiser 5.0L (2008) Lying · Seattle, WA USA - At Our Docks! Broker's Comments: The Bayliner 265 Ciera Sunbridge model is one of the most popular models built by US Marine. It is considered trailerable due to its beam of 8' 6". This 2008 Bayliner 265 shows very little use. The upholstery, carpets, interior surfaces and exterior gelcoat does not show much if any evidence of wear and tear. Extra features include a full enclosure for the cockpit and a new rebuilt outdrive including the gimbal and transom repair. The engine has been serviced so this boat is ready now for spring and summer fun.

Basic Information

Category: cruiser

Sub Category: Cabin Cruiser

Model Year: 2008

Year Built: 2008

Country: United States

Dimensions

LOA: 26' (7.92mm)

Beam: 8.5

Min Draft: 1' 10" (0.56mm)

Max Draft: 3' 3" (0.99mm)

Speed, Capacities and Weight

Water Capacity: 16 Gallons

Holding Tank: 20 Gal Gallons

Fuel Capacity: 62.5 Gal Gallons

Accommodations

Total Cabins: 2

Hull and Deck Information

Hull Material: Fiberglass

Deck Material: Fiberglass

Hull Configuration: Planing

Engine Information

Engines: 1

Manufacturer: Mercruiser

Fuel Type: Gas

PHOTOS

Bayliner 265 - Looking Forward



Bayliner 265 - Looking Aft



Bayliner 265 - Galley



Bayliner 265 - Galley Sink



Bayliner 265 - Salon



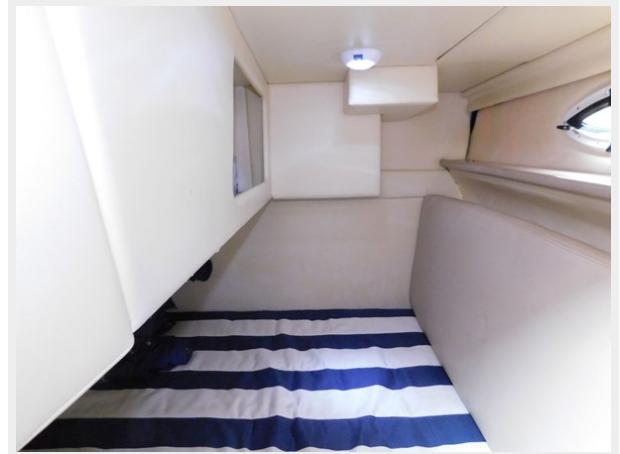
Bayliner 265 - Salon Table



Bayliner 265 - Forward Cabin



Bayliner 265 - Aft Cabin



Bayliner 265 - Head



Bayliner 265 - Helm



Bayliner 265 - Cockpit



CONTACTS

Andrey Shestakov, leading yacht broker of the sales department of Shestakov Yacht Sales Inc. Shestakov Yacht Sales Inc., the official representative of the Miami/Fort Lauderdale FL headquarters.

Contact details

Email: andrey@shestakovyachtsales.com

Web: shestakovyachtsales.com/en/

Telephones

USA: +1(954)274-4435

Office hours

Monday – Saturday: **9:00 - 21:00** EDT

Sunday: **closed**

Address



Harbour Towne Marina, 850 NE 3rd St,
STE 213, Dania, FL 33004