

IN SIX — RIZZARDI



Builder: RIZZARDI

LOA: 70' 7" (21.51mm)

Year Built: 2024

Beam: 16.08

Model: Motor Yacht

Price: €2,620,000 EUR

Location: United States

Our experienced yacht broker, Andrey Shestakov, will help you choose and buy a yacht that best suits your needs **IN SIX — RIZZARDI** from our catalogue. Presently, at Shestakov Yacht Sales Inc., we have a wide variety of yachts available on our sale's list. We also work in close contact with all the big yacht manufacturers from all over the world.

If you would like to buy a yacht **IN SIX — RIZZARDI** or would like help answering any questions concerning purchasing, selling or chartering a yacht, please call **+1(954)274-4435**

TABLE OF CONTENTS

TABLE OF CONTENTS	2
SPECIFICATIONS	3
Overview	3
Basic Information	3
Dimensions	3
Accommodations	3
Hull and Deck Information	3
Engine Information	4
PHOTOS	5
9204883_20240123120833358_1_XLARGE	5
9204883_20240123120835474_1_XLARGE	5
9204883_20240123120841231_1_XLARGE	5
9204883_20240123120843025_1_XLARGE	5
9204883_20240123120845243_1_XLARGE	5
9204883_20240123120846954_1_XLARGE	5
9204883_20240123120839061_1_XLARGE	6
CONTACTS	7
Contact details	7
Telephones	7
Office hours	7
Address	7

SPECIFICATIONS

Overview

BORN TO CHALLENGE THE LIMITS

Speed and elegance. Dynamism and design. A speed of up to 50 kn and over 120 customizable options. The new INsix brings together perfection, exceptional performance and comfort.

For people who want to challenge the limits.

The layout reflects that of an open yacht with a large open hard-top leading to a large glass door separating the below-deck spaces. When left open, the design highlights a large continuous area between the external and internal environments.

Regarding the technical aspects, it can be powered by either twin MAN 1,200hp or twin MAN 1,550hp diesels, both driven through the innovative Top System surface transmissions which, supported by the Easy-trim system and joystick control, will guarantee not only excellent high-speed performance, but also unrivalled low-speed handling for a surface-driven craft.

Basic Information

Category: Motor Yacht

Model Year: 2024

Year Built: 2024

Country: United States

Dimensions

LOA: 70' 7" (21.51mm)

Beam: 16.08

Accommodations

Total Cabins: 4

Hull and Deck Information

Hull Material: Fiberglass

Engine Information

Engines: 2

Manufacturer: MAN

Engine Type: Inboard

Fuel Type: Other

PHOTOS

9204883_20240123120833358_1_XLARGE



9204883_20240123120835474_1_XLARGE



9204883_20240123120841231_1_XLARGE



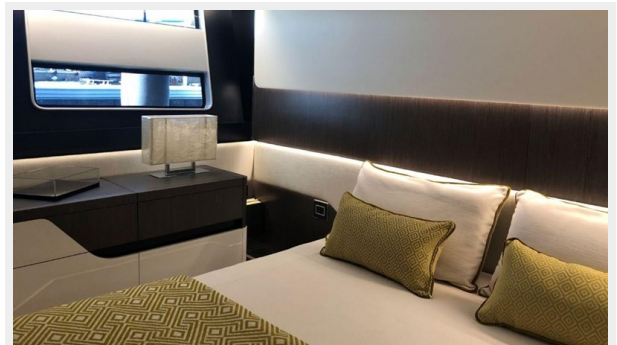
9204883_20240123120843025_1_XLARGE



9204883_20240123120845243_1_XLARGE



9204883_20240123120846954_1_XLARGE



9204883_20240123120839061_1_XLARGE



CONTACTS

Andrey Shestakov, leading yacht broker of the sales department of Shestakov Yacht Sales Inc. Shestakov Yacht Sales Inc., the official representative of the Miami/Fort Lauderdale FL headquarters.

Contact details

Email: andrey@shestakovyachtsales.com

Web: shestakovyachtsales.com/en/

Telephones

USA: +1(954)274-4435

Office hours

Monday – Saturday: **9:00 - 21:00** EDT

Sunday: **closed**

Address



Harbour Towne Marina, 850 NE 3rd St,
STE 213, Dania, FL 33004