

SECOND WIND — PRESENT YACHTS



Builder: PRESENT YACHTS

LOA: 40' (12.19mm)

Year Built: 1988

Beam: 13.91

Model: Flybridge

Min Draft: 3' 7" (1.09mm)

Price: \$87,500 USD

Location: United States

Our experienced yacht broker, Andrey Shestakov, will help you choose and buy a yacht that best suits your needs **SECOND WIND — PRESENT YACHTS** from our catalogue. Presently, at Shestakov Yacht Sales Inc., we have a wide variety of yachts available on our sale's list. We also work in close contact with all the big yacht manufacturers from all over the world.

If you would like to buy a yacht **SECOND WIND — PRESENT YACHTS** or would like help answering any questions concerning purchasing, selling or chartering a yacht, please call **+1(954)274-4435**

TABLE OF CONTENTS

TABLE OF CONTENTS	2
SPECIFICATIONS	3
Overview	3
Basic Information	3
Dimensions	3
Speed, Capacities and Weight	4
Accommodations	4
Hull and Deck Information	4
Engine Information	4
PHOTOS	5
CONTACTS	12
Contact details	12
Telephones	12
Office hours	12
Address	12

SPECIFICATIONS

Overview

Loop Ready. A superbly built 1988 Present Sundeck Motor Yacht, perfect for doing The Loop! Built in the Chung Hwa yard in Taiwan is also known as Ponderosa. This strong, well-designed motor yacht, offers lots of storage and comfortable size berths. Lots of traditional teak trim on the interior and a teak handrail on the exterior. Galley The galley is located down and has a propane stove with two tanks, located on the flybridge in a locker, a full-size Norcold refrigerator/freezer with dual voltage power, a microwave, deep stainless steel sinks, and 12-volt lighting. New dinette cushions. Electronics VHF, Raymarine, and Garmin GPS and trim tabs. Electrical includes: 2 new TVs & Stereo, 110 shore power, 3 12 volt and 8 D batteries with new charger. Bilge pumps. Exterior The flybridge includes a bimini top and seating for 6 with new cushions. Full aft deck with hard top, built-in bench seating, and cushions with storage. The Handrail is teak. The engines are twin Cummins 215, with a Mariner battery charger. See the video of the engine room. This is a 3-owner boat in fresh water for 15 years the vessel was painted from the rub rail up 4 years ago. This vessel has a portable Whisper 3500 generator, however, there is a wired connection under the battery stand and lots of room on the aft deck roof to install solar power. Maxwell HRC10 Windlass with 300ft of chain. Davits with 1977 Boston Whaler and Johnson 15 HP outboard. In 2023 new heat exchangers, transmissions, fuel polished, and all fluids changed. Bottom job last spring. She is now ready to gain her Second Wind and move on to a new chapter.

Basic Information

Category: Flybridge

Sub Category: Flybridge

Model Year: 1988

Year Built: 1988

Country: United States

Dimensions

LOA: 40' (12.19mm)

Beam: 13.91

Min Draft: 3' 7" (1.09mm)

Speed, Capacities and Weight

Water Capacity: 300 Gallons

Holding Tank: 80 Gal Gallons

Fuel Capacity: 450 Gal Gallons

Accommodations

Total Cabins: 3

Total Heads: 2

Hull and Deck Information

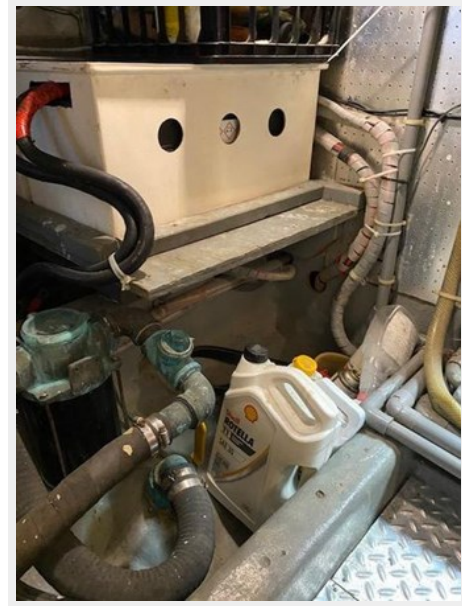
Hull Material: Fiberglass

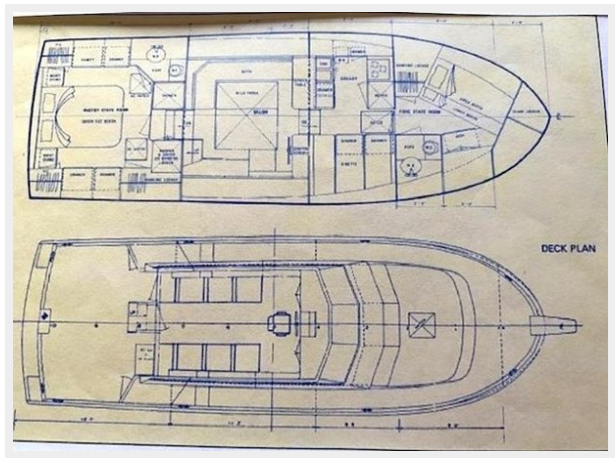
Engine Information

Engines: 2

Manufacturer: Cummins

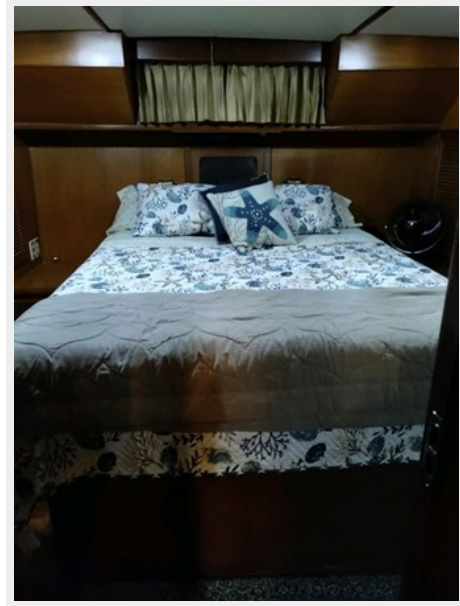
PHOTOS

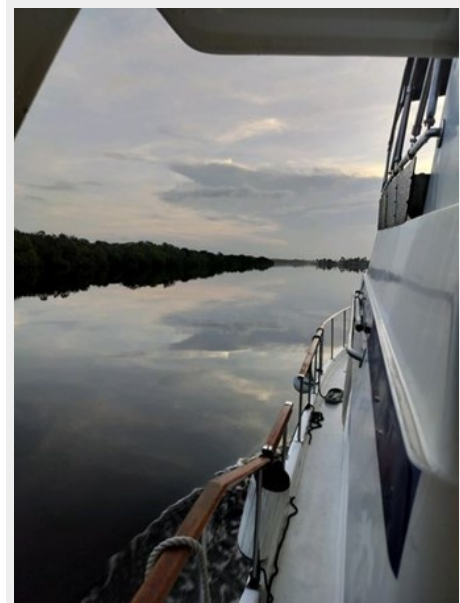
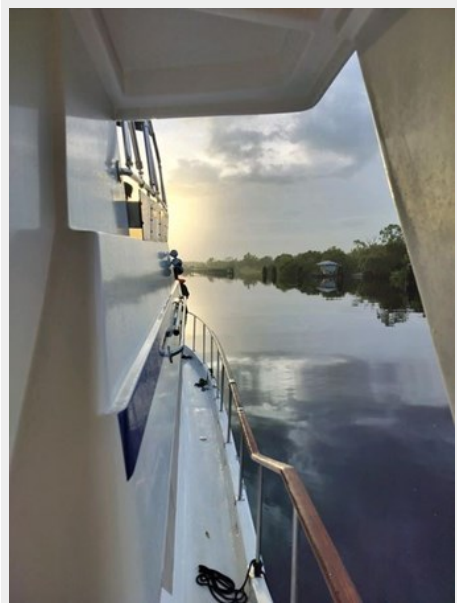














CONTACTS

Andrey Shestakov, leading yacht broker of the sales department of Shestakov Yacht Sales Inc. Shestakov Yacht Sales Inc., the official representative of the Miami/Fort Lauderdale FL headquarters.

Contact details

Email: andrey@shestakovyachtsales.com

Web: shestakovyachtsales.com/en/

Telephones

USA: +1(954)274-4435

Office hours

Monday – Saturday: **9:00 - 21:00** EDT

Sunday: **closed**

Address



Harbour Towne Marina, 850 NE 3rd St,
STE 213, Dania, FL 33004