

OUR TIME — MAINSHIP



Builder: MAINSHIP

Year Built: 2003

Model: trawler

Price: \$230,000 USD

Location: United States

LOA: 49' 11" (15.21mm)

Beam: 15.5

Max Draft: 3' 8" (1.12mm)

Our experienced yacht broker, Andrey Shestakov, will help you choose and buy a yacht that best suits your needs **OUR TIME — MAINSHIP** from our catalogue. Presently, at Shestakov Yacht Sales Inc., we have a wide variety of yachts available on our sale's list. We also work in close contact with all the big yacht manufacturers from all over the world.

If you would like to buy a yacht **OUR TIME — MAINSHIP** or would like help answering any questions concerning purchasing, selling or chartering a yacht, please call **+1(954)274-4435**

TABLE OF CONTENTS

| | |
|------------------------------|----|
| TABLE OF CONTENTS | 2 |
| SPECIFICATIONS | 3 |
| Overview | 3 |
| Basic Information | 4 |
| Dimensions | 4 |
| Speed, Capacities and Weight | 4 |
| Accommodations | 4 |
| Hull and Deck Information | 4 |
| Engine Information | 4 |
| PHOTOS | 5 |
| CONTACTS | 22 |
| Contact details | 22 |
| Telephones | 22 |
| Office hours | 22 |
| Address | 22 |

SPECIFICATIONS

Overview

On this vessel the pictures tell the story of a quality built and maintained yacht! The Mainship 430 Trawler has taken a classic design and improved it through innovative engineering and modern manufacturing methods. Since its inception 20 years ago, Mainship has produced thousands of boats - mostly in the trawler family. The focus has been on building high-quality, low-maintenance diesel cruisers that are comfortable and affordable. The 430 Trawler has a fully instrumented lower helm that allows operation during inclement weather and is equipped with full washers and wipers. The comfortable and adjustable pilot seat makes any voyage comfortable. From the expansive flybridge, captains have a full unobstructed view to all points. Both overhead and console space have been dedicated to electronic needs. Aft of the standard radar mast, are molded steps with diamond non-skid leading to the aft deck with a door to the swim platform which stores the tender. Sturdy stainless-steel rails offer excellent handholds, and the cockpit is lowered for safer and easier entry to the full-size hydraulic swim platform that includes a convenient swim ladder, and freshwater shower. Heading to the integrated pulpit is safe for all with the wide decks and high bulwarks of the 430. Fore and aft shore power outlets allow for choice of docking. The port and starboard cabin doors make shorthanding a snap as well. Counter space is usually at a premium on a boat of this size the galley on the 430 Trawler is a chef's paradise with plenty of Corian-covered counters, an oversized sink, a three-burner range, a microwave oven, a refrigerator, and loads of storage. The adjustable mast also makes this the perfect loop Cruiser! PSS Shaft seals were redone in 2022. New Mixing Elbows 2022. The yearly maintenance is done by a qualified Yanmar specialist mechanic. Yanmar 16k kilowatt Generator with about 3000 hours. Rear access panel to the generator. Inverter for galley with separate breaker and galley battery Microwave can run offshore power or galley battery. The separate media center battery, inverter needs replacement. Galley, engine, and generator batteries were replaced in 2022-23. Vetus Bowthruster batteries were replaced in 2022. New canvas in 2022. Polycarbonate panels on flybridge windshield. Break down mast. Hydraulic solutions swim platform. New vinyl in flybridge in 2019. Maxwell anchor winch in 2018. 60 lb. Manson anchor with second Kodiak anchor. Wash down hose on bow. 10.5 foot 2018 walker bay dingy with 20hp Honda engine. Electronics Raymarine Axiom chart plotter in flybridge and lower helm Raymarine Quantum Doppler radar. Raymarine Auto pilot. Back up camera. All new in 2020. Digital throttles, dual helms. Interior Galley down style. Nova Kool refrigerator/freezer, new in 2020. 3 air conditioners with a manifold system for flushing each unit separately. Washer/ dryer combo. The Aft head was rebuilt in 2023. New aft holding tank in 2020. LED DC lighting when at anchor. Large comfortable salon with refinished sofa with storage underneath. Teak & Holly cabin sole. And so, so much more!

Basic Information

Category: trawler

Model Year: 2003

Year Built: 2003

Country: United States

Dimensions

LOA: 49' 11" (15.21mm)

LWL: 43' (13.11mm)

LOD: 45' (13.72mm)

Beam: 15.5

Max Draft: 3' 8" (1.12mm)

Speed, Capacities and Weight

Water Capacity: 250 Gallons

Holding Tank: 48 Gal Gallons

Fuel Capacity: 500 Gal Gallons

Accommodations

Total Cabins: 3

Total Heads: 2

Hull and Deck Information

Hull Material: Fiberglass

Hull Configuration: Modified V-Hull

Engine Information

Engines: 2

Manufacturer: Yanmar

Engine Type: Inboard

Fuel Type: Diesel

PHOTOS











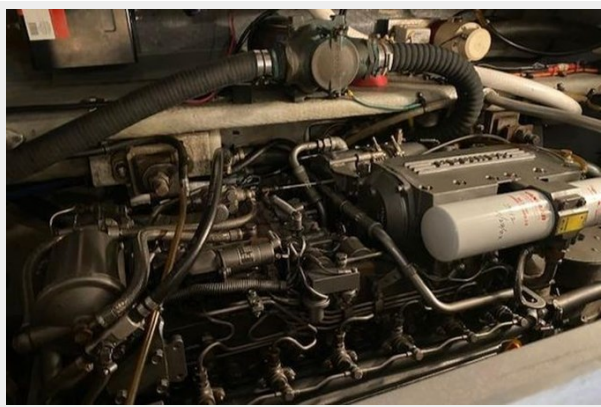




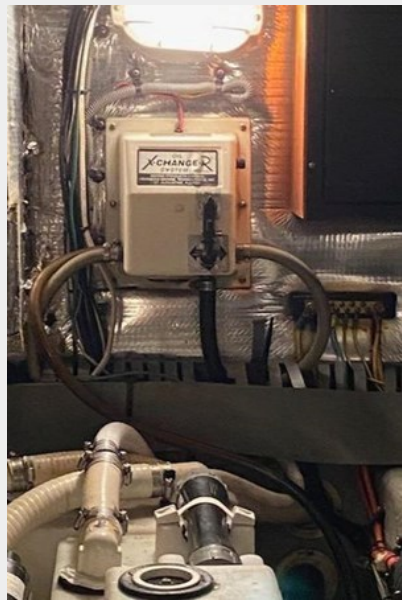
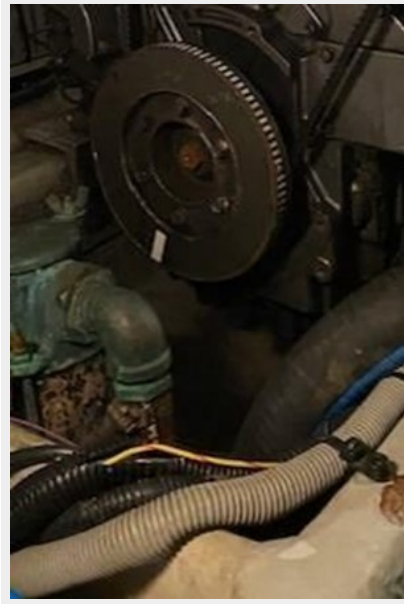






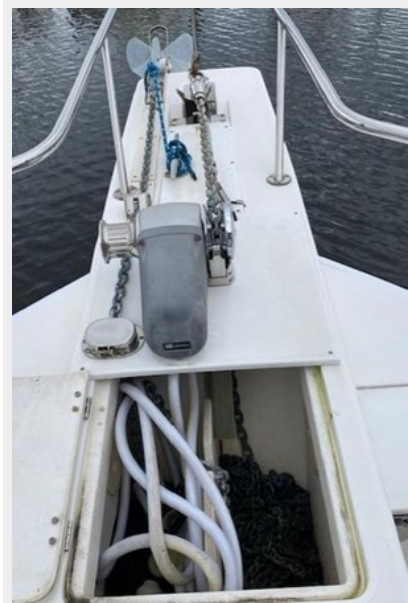














CONTACTS

Andrey Shestakov, leading yacht broker of the sales department of Shestakov Yacht Sales Inc. Shestakov Yacht Sales Inc., the official representative of the Miami/Fort Lauderdale FL headquarters.

Contact details

Email: andrey@shestakovyachtsales.com

Web: shestakovyachtsales.com/en/

Telephones

USA: +1(954)274-4435

Office hours

Monday – Saturday: **9:00 - 21:00** EDT

Sunday: **closed**

Address



Harbour Towne Marina, 850 NE 3rd St,
STE 213, Dania, FL 33004