

55 ISLANDER CMY — NOVATEC



Builder: NOVATEC

Year Built: 2002

Model: Aft Cabin

Price: \$385,000 USD

Location: United States

LOA: 60' 3" (18.36m)

Beam: 16.25

Cruise Speed: 17 Knots Kts. (20 MPH)

Max Speed: 22 Knots Kts. (25 MPH)

Our experienced yacht broker, Andrey Shestakov, will help you choose and buy a yacht that best suits your needs **55 Islander CMY — NOVATEC** from our catalogue. Presently, at Shestakov Yacht Sales Inc., we have a wide variety of yachts available on our sale's list. We also work in close contact with all the big yacht manufacturers from all over the world.

If you would like to buy a yacht **55 Islander CMY — NOVATEC** or would like help answering any questions concerning purchasing, selling or chartering a yacht, please call **+1(954)274-4435**

TABLE OF CONTENTS

| | |
|------------------------------|---|
| TABLE OF CONTENTS | 2 |
| SPECIFICATIONS | 5 |
| Overview | 5 |
| Basic Information | 5 |
| Dimensions | 5 |
| Speed, Capacities and Weight | 5 |
| Accommodations | 6 |
| Hull and Deck Information | 6 |
| Engine Information | 6 |
| PHOTOS | 7 |
| 2 | 7 |
| 3 | 7 |
| 4 | 7 |
| 5 | 7 |
| 6 | 7 |
| 7 | 7 |
| 8 | 8 |
| 9 | 8 |
| 10 | 8 |
| 11 | 8 |
| 12 | 8 |
| 13 | 8 |
| 14 | 9 |
| 15 | 9 |
| 16 | 9 |
| 17 | 9 |
| 18 | 9 |
| 19 | 9 |

| | |
|----|----|
| 20 | 10 |
| 21 | 10 |
| 22 | 10 |
| 23 | 10 |
| 24 | 10 |
| 25 | 10 |
| 26 | 11 |
| 27 | 11 |
| 28 | 11 |
| 29 | 11 |
| 30 | 11 |
| 31 | 11 |
| 32 | 12 |
| 33 | 12 |
| 34 | 12 |
| 35 | 12 |
| 36 | 12 |
| 37 | 12 |
| 38 | 13 |
| 39 | 13 |
| 40 | 13 |
| 41 | 13 |
| 42 | 13 |
| 43 | 13 |
| 44 | 14 |
| 45 | 14 |
| 46 | 14 |
| 47 | 14 |
| 48 | 14 |

| | |
|-----------------|-----------|
| 49 | 14 |
| 50 | 15 |
| 51 | 15 |
| 52 | 15 |
| 53 | 15 |
| 54 | 15 |
| 55 | 15 |
| 56 | 16 |
| 57 | 16 |
| 58 | 16 |
| 59 | 16 |
| 60 | 16 |
| 61 | 16 |
| 62 | 17 |
| 63 | 17 |
| 64 | 17 |
| 65 | 17 |
| 66 | 17 |
| 67 | 17 |
| CONTACTS | 18 |
| Contact details | 18 |
| Telephones | 18 |
| Office hours | 18 |
| Address | 18 |

SPECIFICATIONS

Overview

Don't miss this one!! This Novatec 55 Islander has it all, maintained by a knowledgeable owner and an open checkbook, and it shows! Powered by the preferred QSM 11 Cummins engine with 635hp each, very economical operation. 17.5kw Onan Cummins Gen Set, oil change system, Rear back up view and engine room cameras, Climate controlled bridge and aft salon, newer (1 year) bottom paint and tune props, spare props, Bow and stern thrusters, 2021 ZAR 11' center console with 30hp Suzuki 4 stroke engine included. Garmin 8616 and Simrad Radar, spotlight, trim tabs, shaded blinds aft deck. This is a must see for a Looper, liveaboard, or long distance cruising, extremely spacious and comfortable, ready to take you on all your cruising adventures, easy to see in N Myrtle Beach SC

Basic Information

Category: Aft Cabin

Sub Category: Aft Cabin

Model Year: 2002

Year Built: 2002

Country: United States

Dimensions

LOA: 60' 3" (18.36mm)

LWL: 55' 7" (16.94mm)

Beam: 16.25

Speed, Capacities and Weight

Cruise Speed: 17 Knots Kts. (20 MPH)

Max Speed: 22 Knots Kts. (25 MPH)

Water Capacity: 200 Gallons

Holding Tank: 110 Gal Gallons

Fuel Capacity: 2250 Gal Gallons

Accommodations

Total Cabins: 3

Total Heads: 2

Hull and Deck Information

Hull Material: Fiberglass

Engine Information

Engines: 2

Manufacturer: Cummins

Engine Type: Inboard

Fuel Type: Diesel

PHOTOS

2



3



4



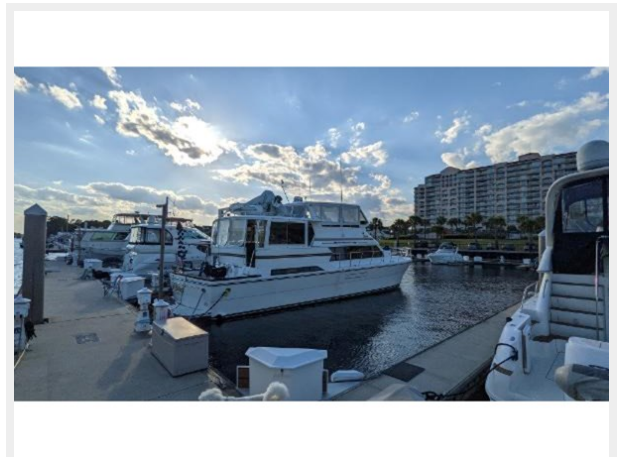
5



6



7



8



9



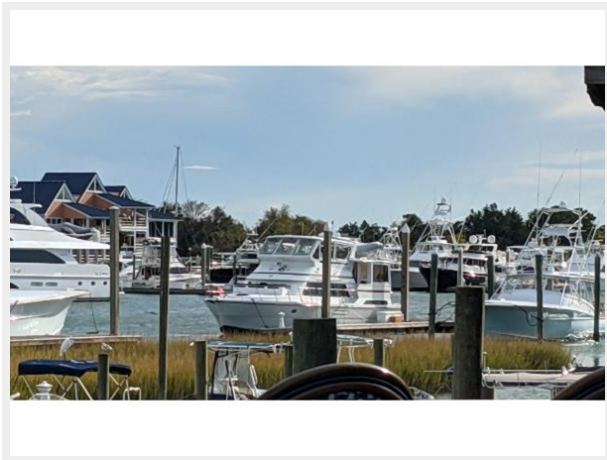
10



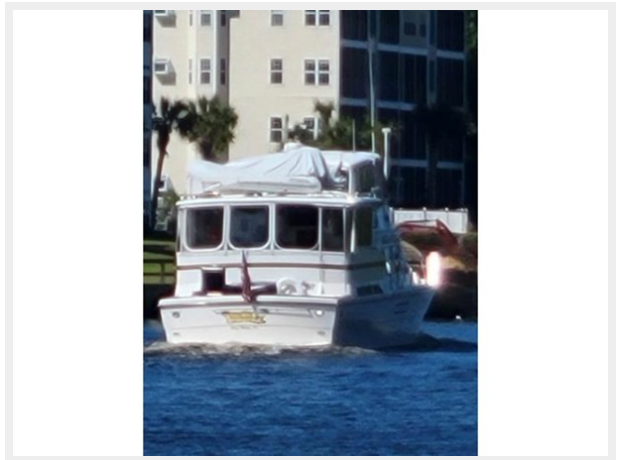
11



12



13



14



15



16



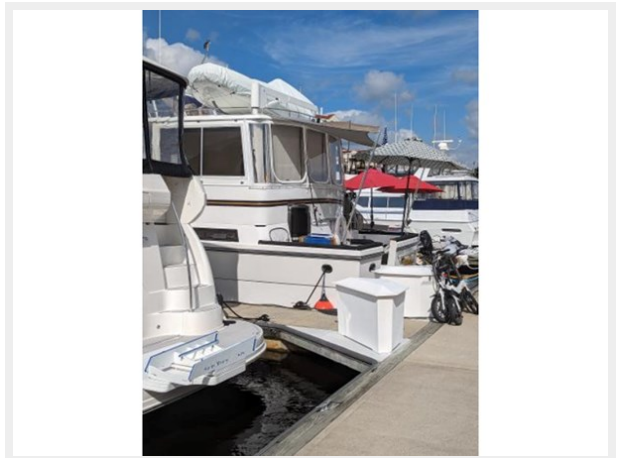
17



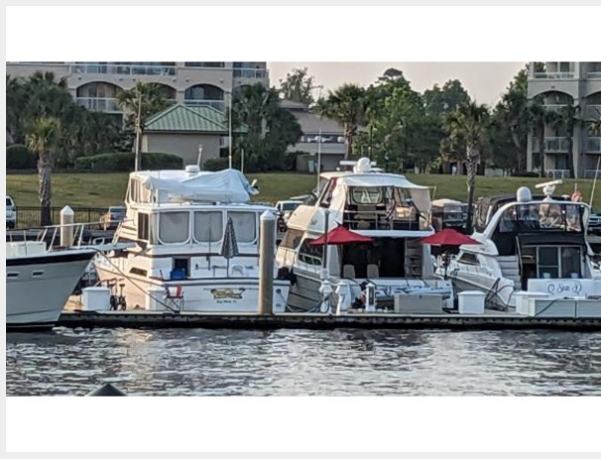
18



19



20



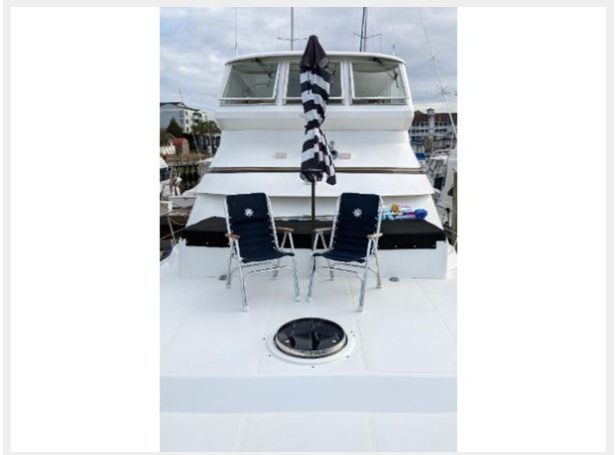
21



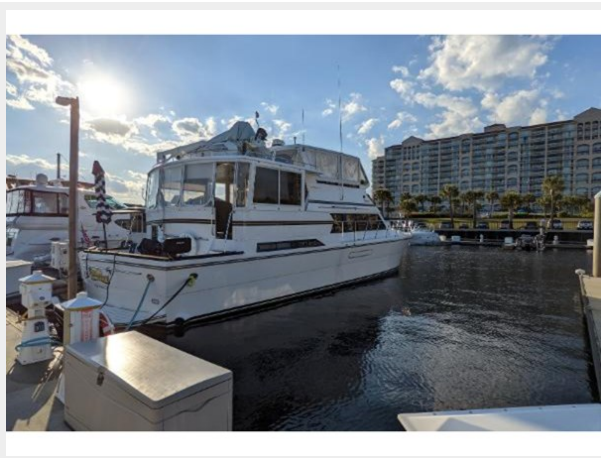
22



23



24



25



26



27



28



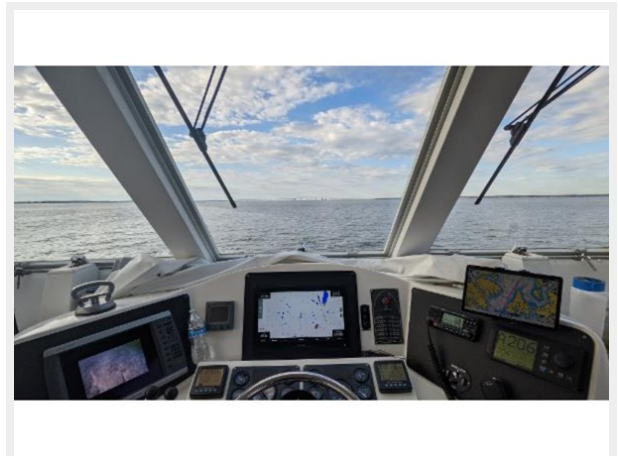
29



30



31



32



33



34



35



36



37



38



39



40



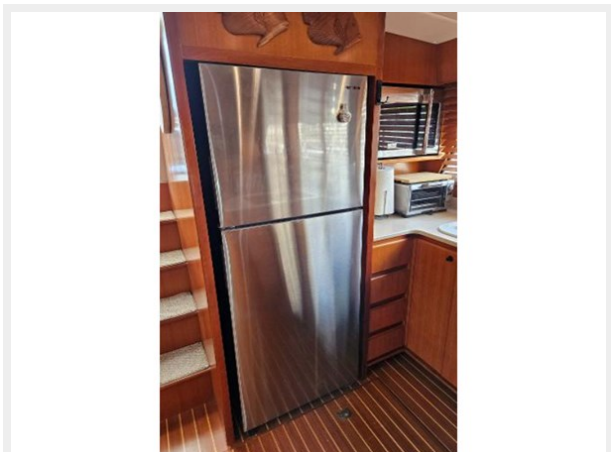
41



42



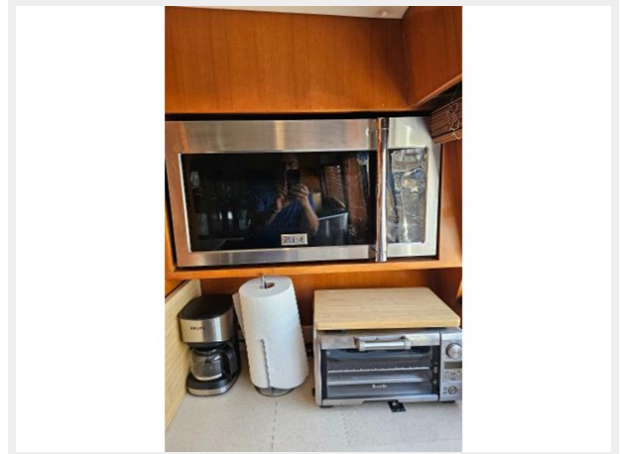
43



44



45



46



47



48



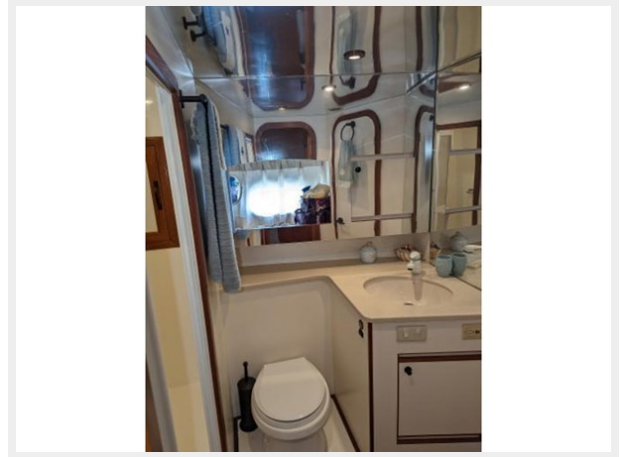
49



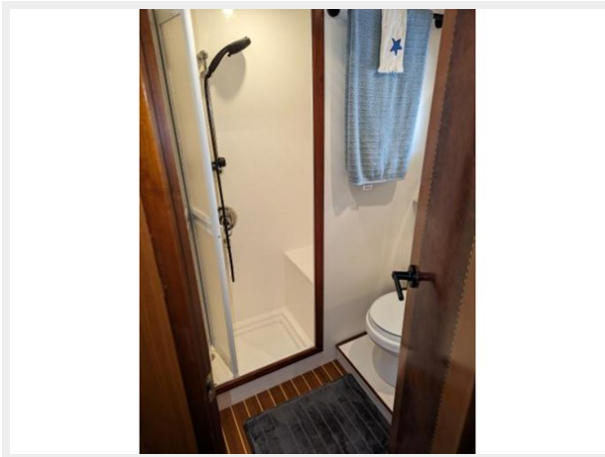
50



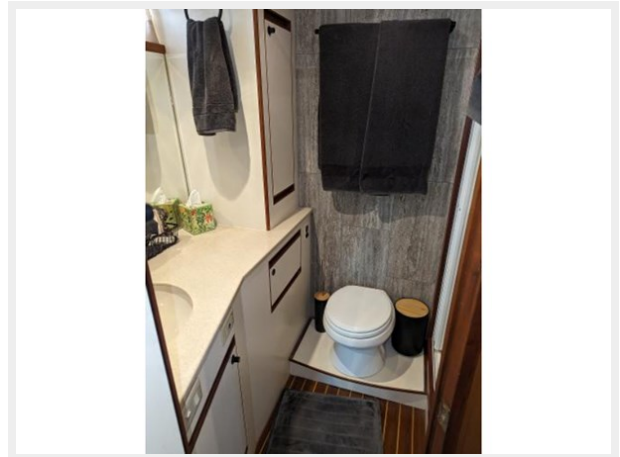
51



52



53



54



55



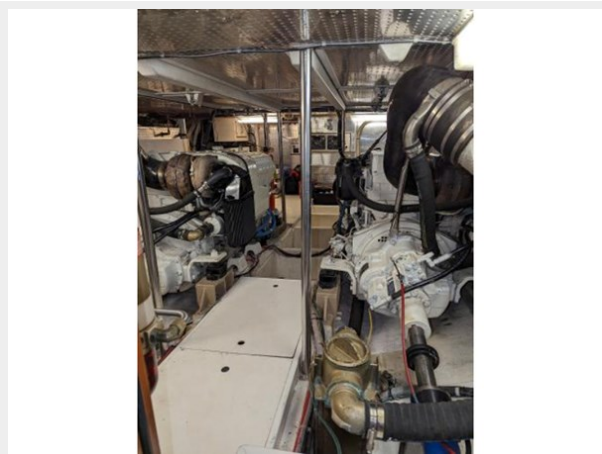
56



57



58



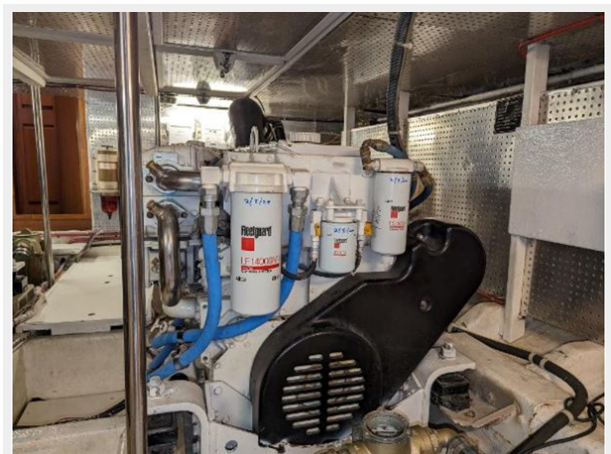
59



60



61



62



63



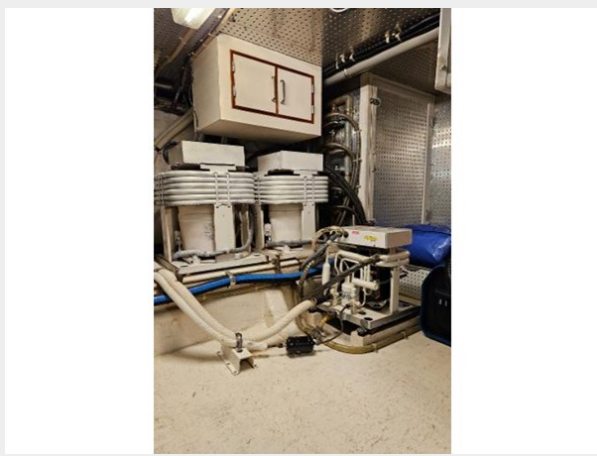
64



65



66



67



CONTACTS

Andrey Shestakov, leading yacht broker of the sales department of Shestakov Yacht Sales Inc. Shestakov Yacht Sales Inc., the official representative of the Miami/Fort Lauderdale FL headquarters.

Contact details

Email: andrey@shestakovyachtsales.com

Web: shestakovyachtsales.com/en/

Telephones

USA: +1(954)274-4435

Office hours

Monday – Saturday: **9:00 - 21:00** EDT

Sunday: **closed**

Address



Harbour Towne Marina, 850 NE 3rd St,
STE 213, Dania, FL 33004