

LIFE PART DEUX — SYMBOL



Builder: SYMBOL

Year Built: 1987

Model: trawler

Price: \$65,000 USD

Location: United States

LOA: 44' (13.41mm)

Beam: 14.75

Min Draft: 3' 10" (1.17mm)

Our experienced yacht broker, Andrey Shestakov, will help you choose and buy a yacht that best suits your needs **LIFE PART DEUX — SYMBOL** from our catalogue. Presently, at Shestakov Yacht Sales Inc., we have a wide variety of yachts available on our sale's list. We also work in close contact with all the big yacht manufacturers from all over the world.

If you would like to buy a yacht **LIFE PART DEUX — SYMBOL** or would like help answering any questions concerning purchasing, selling or chartering a yacht, please call **+1(954)274-4435**

TABLE OF CONTENTS

TABLE OF CONTENTS	2
SPECIFICATIONS	3
Overview	3
Basic Information	3
Dimensions	3
Speed, Capacities and Weight	3
Accommodations	4
Hull and Deck Information	4
Engine Information	4
PHOTOS	5
CONTACTS	19
Contact details	19
Telephones	19
Office hours	19
Address	19

SPECIFICATIONS

Overview

PRICE REDUCED Built in the Kaohsiung yard in Taiwan, where many quality Trawlers were built in the 1980s. A 3 Owner, Sun Deck Trawler with 2 staterooms and 2 full heads. New cushions in the circular seating area in galley. Great aft deck with a Magma grill and spacious fly bridge area with a bimini top, but needs new electronics. Large foredeck with dock box and full walkways to aft deck. Walkaround bed in Master Stateroom with side tables and full head/shower. Storage includes shelves, a hanging closet, and drawers. The original headliner is in great shape. Queen v berth with starboard entry with hanging closet, shelves, and bench seat. Galley with Princess stove, Oster Microwave, and fridge/freezer. The table is a marble top, which folds down to another berth. Double sink with under cabinet lighting. 2 Dometic A/C units. 3 New House batteries. Caterpillar engines with low hours and new Racor filters. Teak & holly cabin sole throughout, add to this old traditional style Trawler, which will make a great liveaboard and cruising vessel. Westerbeke Generator with 448 hours.

Basic Information

Category: trawler

Model Year: 1987

Year Built: 1987

Country: United States

Dimensions

LOA: 44' (13.41mm)

Beam: 14.75

Min Draft: 3' 10" (1.17mm)

Speed, Capacities and Weight

Water Capacity: 146 Gallons

Holding Tank: 47 Gal Gallons

Fuel Capacity: 250 Gal Gallons

Accommodations

Total Cabins: 2

Total Berths: 2

Total Heads: 2

Hull and Deck Information

Hull Material: Fiberglass

Engine Information

Engines: 2

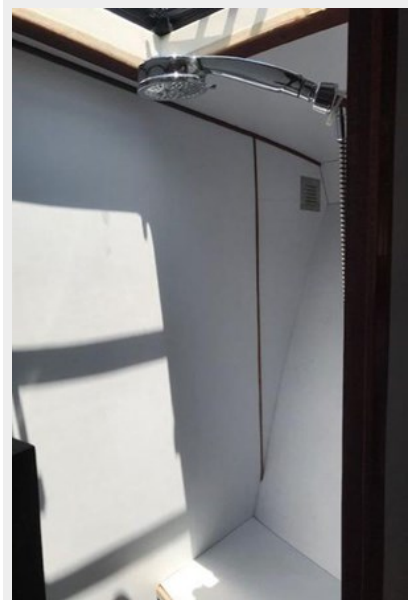
Manufacturer: Caterpillar

Engine Type: Inboard

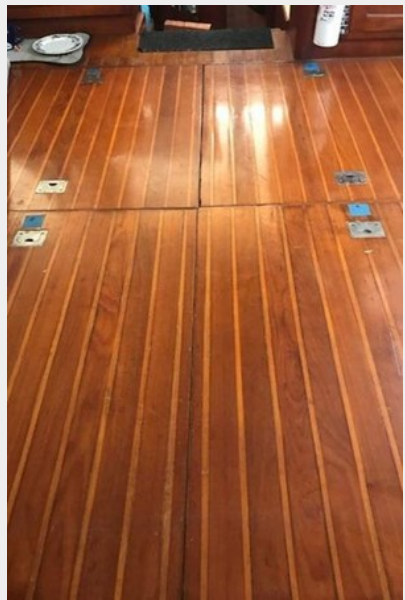
Fuel Type: Diesel

PHOTOS





























CONTACTS

Andrey Shestakov, leading yacht broker of the sales department of Shestakov Yacht Sales Inc. Shestakov Yacht Sales Inc., the official representative of the Miami/Fort Lauderdale FL headquarters.

Contact details

Email: andrey@shestakovyachtsales.com

Web: shestakovyachtsales.com/en/

Telephones

USA: +1(954)274-4435

Office hours

Monday – Saturday: **9:00 - 21:00** EDT

Sunday: **closed**

Address



Harbour Towne Marina, 850 NE 3rd St,
STE 213, Dania, FL 33004