

## CASINO ROYALE — TANKOA YACHTS



**Builder:** TANKOA YACHTS

**Year Built:** 2018

**Model:** Displacement

**Price:** €69,000,000 EUR

**Location:** United States

**LOA:** 236' 3" (72mm)

**Beam:** 38.05

**Min Draft:** 10' 5" (3.15mm)

**Max Draft:** 11' 2" (3.4mm)

**Cruise Speed:** 15 Knots Kts. (17 MPH)

**Max Speed:** 17.5 Knots Kts. (20 MPH)

Our experienced yacht broker, Andrey Shestakov, will help you choose and buy a yacht that best suits your needs **Casino Royale — TANKOA YACHTS** from our catalogue. Presently, at Shestakov Yacht Sales Inc., we have a wide variety of yachts available on our sale's list. We also work in close contact with all the big yacht manufacturers from all over the world.

If you would like to buy a yacht **Casino Royale — TANKOA YACHTS** or would like help answering any questions concerning purchasing, selling or chartering a yacht, please call **+1(954)274-4435**

# TABLE OF CONTENTS

TABLE OF CONTENTS	2
SPECIFICATIONS	4
Basic Information	4
Dimensions	4
Speed, Capacities and Weight	4
Accommodations	4
Hull and Deck Information	5
Engine Information	5
PHOTOS	6
Casino Royale Aft Deck Pool	6
Casino Royale Aft Lounge 1	6
Casino Royale Aft Lounge Bar 1	6
Casino Royale at Atlantis Resort	6
Casino Royale Beach Club 1	6
Casino Royale Beach Club 2	6
Casino Royale Gym 1	7
Casino Royale Jacuzzi and Heli Deck	7
Casino Royale Jacuzzi Deck 1	7
Casino Royale Main Salon 1	7
Casino Royale Massage Suite	7
Casino Royale Master Suite 1	7
Casino Royale Master Suite 2	8
Casino Royale Master Suite 4	8
Casino Royale Master Suite Vanity	8
Casino Royale Owners Deck 1	8
Casino Royale Owners Office 1	9
Casino Royale Owners Deck 2	9
Casino Royale Sauna	9

---

Casino Royale Sky Lounge 1	9
Casino Royale Sky Lounge 2	9
Casino Royale Skylounge Fireplace	9
Casino Royale Wheelhouse	10
CONTACTS	11
Contact details	11
Telephones	11
Office hours	11
Address	11

---

# SPECIFICATIONS

---

## Basic Information

---

**Category:** Displacement

**Sub Category:** Displacement

**Model Year:** 2018

**Year Built:** 2018

**Refit Type:** FULL PAINT + LLOYDS 5 YEAR SURVEY  
**Country:** United States

## Dimensions

---

**LOA:** 236' 3" (72mm)

**Beam:** 38.05

**Min Draft:** 10' 5" (3.15mm)

**Max Draft:** 11' 2" (3.4mm)

## Speed, Capacities and Weight

---

**Cruise Speed:** 15 Knots Kts. (17 MPH)

**Cruise Speed Range:** 4500

**Max Speed:** 17.5 Knots Kts. (20 MPH)

**Max Speed Range:** 3500 Kts.

**Gross Tonnage:** 1541 Pounds

**Water Capacity:** 37600 Gallons

**Holding Tank:** 8347.84 Gal Gallons

**Fuel Capacity:** 47022.63 Gal Gallons

**Fuel Consumption:** 92.46 Gal Gallons

## Accommodations

---

**Total Cabins:** 6

**Total Berths:** 12

**Sleeps:** 12

**Total Heads:** 10

**Crew Cabin:** 9

**Crew Berths:** 9

**Crew Heads:** 5

---

## Hull and Deck Information

---

**Hull Material:** Steel

**Deck Material:** Teak

**Hull Configuration:** Displacement w/  
Bulbous Bow

**Hull Color:** Snow White

**Hull Designer:** Paszkowski

**Exterior Designer:** Francesco Paszkowski

**Interior Designer:** Margherita Casprini

---

## Engine Information

---

**Engines:** 2

**Manufacturer:** Caterpillar

**Engine Type:** Inboard

**Fuel Type:** Diesel

# PHOTOS

**Casino Royale Aft Deck Pool**



**Casino Royale Aft Lounge 1**



**Casino Royale Aft Lounge Bar 1**



**Casino Royale at Atlantis Resort**



**Casino Royale Beach Club 1**

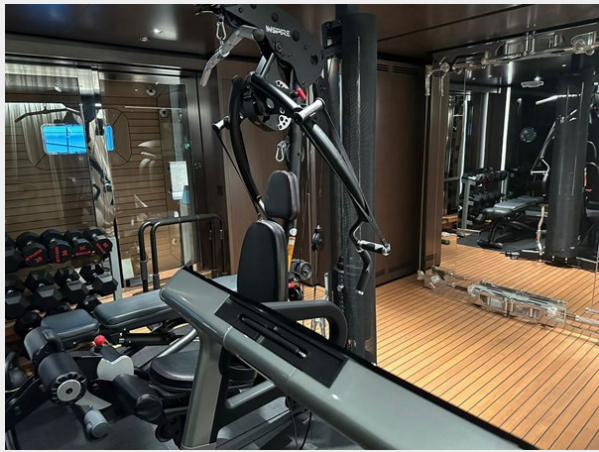


**Casino Royale Beach Club 2**





**Casino Royale Gym 1**



**Casino Royale Jacuzzi and Heli Deck**



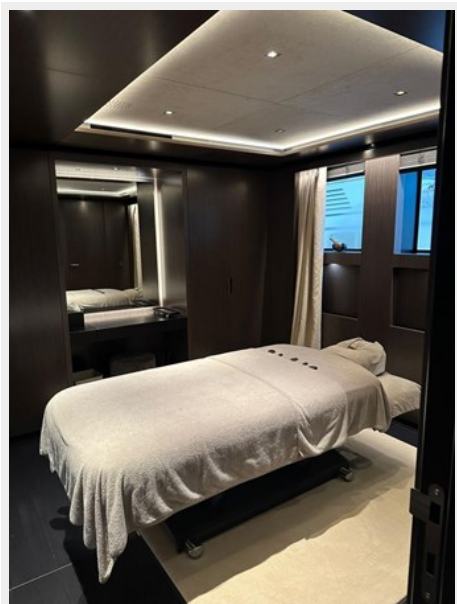
**Casino Royale Jacuzzi Deck 1**



**Casino Royale Main Salon 1**



**Casino Royale Massage Suite**



**Casino Royale Master Suite 1**



### Casino Royale Master Suite 2



### Casino Royale Master Suite 4



### Casino Royale Master Suite Vanity



### Casino Royale Owners Deck 1

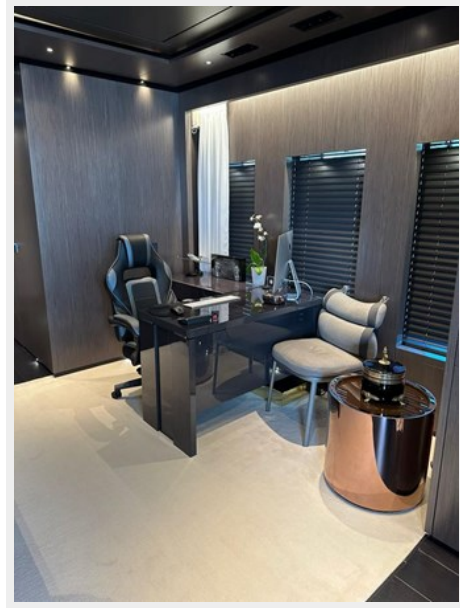




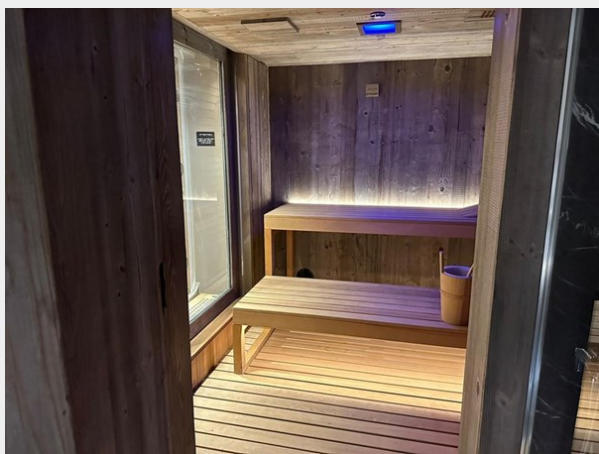
**Casino Royale Owners Deck 2**



**Casino Royale Owners Office 1**



**Casino Royale Sauna**



**Casino Royale Sky Lounge 1**



**Casino Royale Sky Lounge 2**



**Casino Royale Skylounge Fireplace**



## Casino Royale Wheelhouse



# CONTACTS

---

Andrey Shestakov, leading yacht broker of the sales department of Shestakov Yacht Sales Inc. Shestakov Yacht Sales Inc., the official representative of the Miami/Fort Lauderdale FL headquarters.

## Contact details

---

Email: [andrey@shestakovyachtsales.com](mailto:andrey@shestakovyachtsales.com)

Web: [shestakovyachtsales.com/en/](http://shestakovyachtsales.com/en/)

## Telephones

---

USA: +1(954)274-4435

## Office hours

---

Monday – Saturday: **9:00 - 21:00** EDT

Sunday: **closed**

## Address

---



Harbour Towne Marina, 850 NE 3rd St,  
STE 213, Dania, FL 33004