

WILDCATTER — RITCHIE HOWELL



Builder: RITCHIE HOWELL

Year Built: 2011

Model: Sport Fisherman

Price: \$1,195,000 USD

Location: United States

LOA: 54' (16.46mm)

Beam: 16.5

Min Draft: 4' (1.22mm)

Our experienced yacht broker, Andrey Shestakov, will help you choose and buy a yacht that best suits your needs **Wildcatter — RITCHIE HOWELL** from our catalogue. Presently, at Shestakov Yacht Sales Inc., we have a wide variety of yachts available on our sale's list. We also work in close contact with all the big yacht manufacturers from all over the world.

If you would like to buy a yacht **Wildcatter — RITCHIE HOWELL** or would like help answering any questions concerning purchasing, selling or chartering a yacht, please call **+1(954)274-4435**

TABLE OF CONTENTS

TABLE OF CONTENTS	2
SPECIFICATIONS	3
Overview	3
Basic Information	3
Dimensions	3
Speed, Capacities and Weight	3
Accommodations	4
Hull and Deck Information	4
Engine Information	4
PHOTOS	5
CONTACTS	11
Contact details	11
Telephones	11
Office hours	11
Address	11

SPECIFICATIONS

Overview

This 54 Ritchie Howell Express offers an exceptional ride with unheard of economy with stunning Carolina lines. The comfortable cabin features two roomy staterooms, two full heads with a spacious cabin area. Ritchie Howell builds one of the highest quality, best riding cold molded jig-built Carolina sportfish on the water and Wildcatter is no exception. Her dependable Volvo IPS power provides exceptional economy, range and ease of operation with no smoke or diesel smell. Yes, this express offers all of that and much more; a must see for any express buyer. Wildcatter is fully serviced in turn-key ready to roll condition for her next owner to enjoy.

Highlights:

- Raised helm for great visibility
- Helm seating with storage
- Mezzanine seating with refrigeration
- Beautiful full teak interior
- Master aft with queen berth

Basic Information

Category: Sport Fisherman

Model Year: 2011

Year Built: 2011

Country: United States

Dimensions

LOA: 54' (16.46mm)

Beam: 16.5

Min Draft: 4' (1.22mm)

Speed, Capacities and Weight

Water Capacity: 250 Gallons

Holding Tank: 30 Gal Gallons

Fuel Capacity: 1100 Gal Gallons

Accommodations

Total Cabins: 2

Hull and Deck Information

Hull Material: Composite

Engine Information

Engines: 2

Manufacturer: Volvo Penta

Engine Type: Inboard

Fuel Type: Diesel

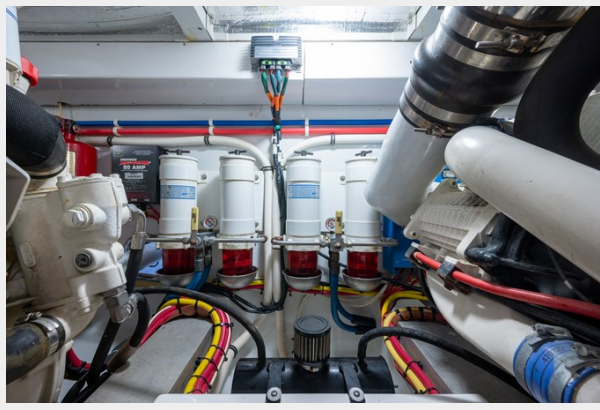
PHOTOS













CONTACTS

Andrey Shestakov, leading yacht broker of the sales department of Shestakov Yacht Sales Inc. Shestakov Yacht Sales Inc., the official representative of the Miami/Fort Lauderdale FL headquarters.

Contact details

Email: andrey@shestakovyachtsales.com

Web: shestakovyachtsales.com/en/

Telephones

USA: +1(954)274-4435

Office hours

Monday – Saturday: **9:00 - 21:00** EDT

Sunday: **closed**

Address



Harbour Towne Marina, 850 NE 3rd St,
STE 213, Dania, FL 33004