

## LAGUNA D — BENETEAU



**Builder:** BENETEAU

**Year Built:** 2013

**Model:** Cruising Sailboat

**Price:** \$349,000 USD

**Location:** United States

**LOA:** 48' (14.63mm)

**Beam:** 15.58

**Min Draft:** 6' 6" (1.98mm)

**Max Draft:** 6' 6" (1.98mm)

**Cruise Speed:** 7 Knots Kts. (8 MPH)

**Max Speed:** 8.5 Knots Kts. (10 MPH)

Our experienced yacht broker, Andrey Shestakov, will help you choose and buy a yacht that best suits your needs **LAGUNA D — BENETEAU** from our catalogue. Presently, at Shestakov Yacht Sales Inc., we have a wide variety of yachts available on our sale's list. We also work in close contact with all the big yacht manufacturers from all over the world.

If you would like to buy a yacht **LAGUNA D — BENETEAU** or would like help answering any questions concerning purchasing, selling or chartering a yacht, please call **+1(954)274-4435**

# TABLE OF CONTENTS

|                              |   |
|------------------------------|---|
| TABLE OF CONTENTS            | 2 |
| SPECIFICATIONS               | 4 |
| Overview                     | 4 |
| Basic Information            | 4 |
| Dimensions                   | 4 |
| Speed, Capacities and Weight | 5 |
| Accommodations               | 5 |
| Hull and Deck Information    | 5 |
| Engine Information           | 5 |
| PHOTOS                       | 6 |
| cockpit 1                    | 6 |
| cockpit table                | 6 |
| cockpit table 2              | 6 |
| cockpit 3                    | 6 |
| cockpit 2                    | 6 |
| cockpit 6                    | 6 |
| swim ladder                  | 7 |
| companion way                | 7 |
| engine 1                     | 7 |
| foer cabin queen             | 7 |
| for cabin 2                  | 7 |
| for cabin 3                  | 7 |
| for cabin shower 2           | 8 |
| for cabin 4                  | 8 |
| for cabin shower 2           | 8 |
| for cabin vanity             | 8 |
| for cabin shower             | 9 |
| gallet to aft cabin port     | 9 |

---

|                  |           |
|------------------|-----------|
| Galley 1         | 9         |
| galley view 1    | 9         |
| salon port side  | 9         |
| salon table 2    | 9         |
| salon table 3    | 10        |
| salon table      | 10        |
| star aft cabin 1 | 10        |
| <b>CONTACTS</b>  | <b>11</b> |
| Contact details  | 11        |
| Telephones       | 11        |
| Office hours     | 11        |
| Address          | 11        |

---

# SPECIFICATIONS

---

## Overview

---

The Beneteau Oceanis 48 brings you all the features you want on your boat. Luxurious Comfort, efficient sail plan, push button controls, safe and fun!

Fantastic adventures anchor out with the fold down swim platform. Super easy to get in and out of the water and dinghy.

Large spacious cockpit with the cockpit table leaves makes for a perfect place to enjoy the adventure.

She sails like a dream upwind and off the wind. Balanced helm gives you the control you want.

## Basic Information

---

**Category:** Cruising Sailboat

**Model Year:** 2013

**Year Built:** 2013

**Country:** United States

## Dimensions

---

**LOA:** 48' (14.63mm)

**Beam:** 15.58

**Min Draft:** 6' 6" (1.98mm)

**Max Draft:** 6' 6" (1.98mm)

---

## Speed, Capacities and Weight

---

**Cruise Speed:** 7 Knots Kts. (8 MPH)

**Cruise Speed Range:** 430

**Max Speed:** 8.5 Knots Kts. (10 MPH)

**Max Speed Range:** 320 Kts.

**Water Capacity:** 150 Gallons

**Holding Tank:** 34 Gal Gallons

**Fuel Capacity:** 110 Gal Gallons

---

## Accommodations

---

**Total Cabins:** 3

**Total Berths:** 6

**Sleeps:** 6

**Total Heads:** 2

---

## Hull and Deck Information

---

**Hull Material:** Fiberglass

**Deck Material:** Teak

**Hull Configuration:** Fast Displacement Hull

**Hull Color:** Teal Blue

**Hull Designer:** Berret-Racoupeau Yacht Design

**Interior Designer:** Nauta Design

---

## Engine Information

---

**Engines:** 1

**Manufacturer:** Yanmar

**Fuel Type:** Diesel

# PHOTOS

**cockpit 1**



**cockpit table**



**cockpit table 2**



**cockpit 3**



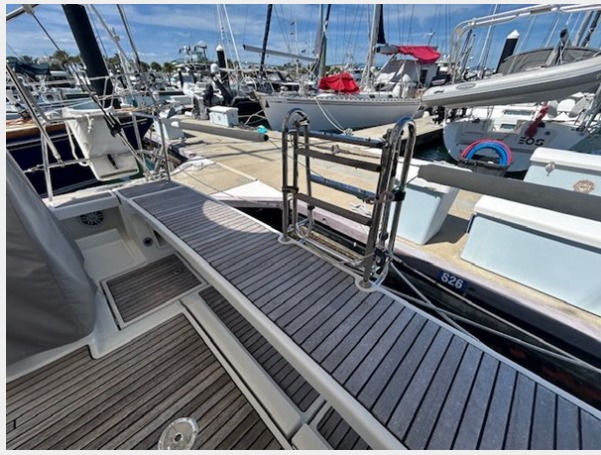
**cockpit 2**



**cockpit 6**



swim ladder



companion way



engine 1



foer cabin queen



for cabin 2



for cabin 3



for cabin 4



for cabin shower 2



for cabin vanity



for cabin shower 2





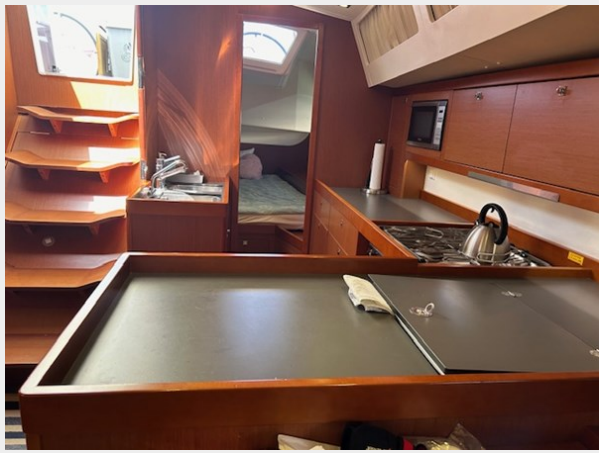
for cabin shower



gallet to aft cabin port



Galley 1



galley view 1



salon port side



salon table 2



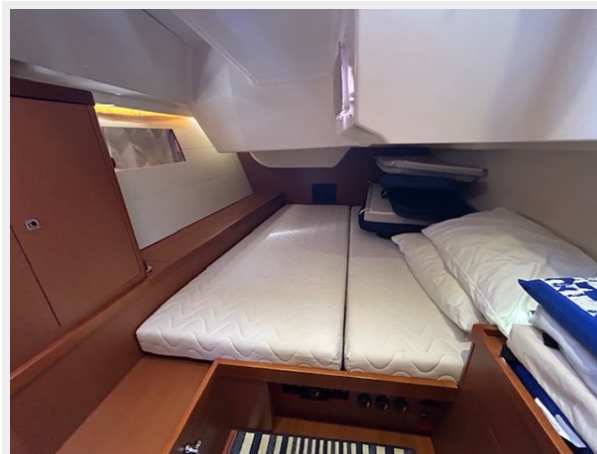
salon table 3



salon table



star aft cabin 1



# CONTACTS

---

Andrey Shestakov, leading yacht broker of the sales department of Shestakov Yacht Sales Inc. Shestakov Yacht Sales Inc., the official representative of the Miami/Fort Lauderdale FL headquarters.

## Contact details

---

Email: **andrey@shestakovyachtsales.com**

Web: [shestakovyachtsales.com/en/](http://shestakovyachtsales.com/en/)

## Telephones

---

USA: +1(954)274-4435

## Office hours

---

Monday – Saturday: **9:00 - 21:00** EDT

Sunday: **closed**

## Address

---



Harbour Towne Marina, 850 NE 3rd St,  
STE 213, Dania, FL 33004