

52 VIKING OPEN 2016 — VIKING



Builder: VIKING

Year Built: 2015

Model: Sport Fisherman

Price: \$1,850,000 USD

Location: United States

LOA: 52' (15.85m)

Beam: 17.5

Cruise Speed: 34 Knots Kts. (39 MPH)

Max Speed: 40 Knots Kts. (46 MPH)

Our experienced yacht broker, Andrey Shestakov, will help you choose and buy a yacht that best suits your needs **52 Viking Open 2016 — VIKING** from our catalogue. Presently, at Shestakov Yacht Sales Inc., we have a wide variety of yachts available on our sale's list. We also work in close contact with all the big yacht manufacturers from all over the world.

If you would like to buy a yacht **52 Viking Open 2016 — VIKING** or would like help answering any questions concerning purchasing, selling or chartering a yacht, please call **+1(954)274-4435**

TABLE OF CONTENTS

TABLE OF CONTENTS	2
SPECIFICATIONS	5
Overview	5
Basic Information	5
Dimensions	5
Speed, Capacities and Weight	5
Accommodations	5
Hull and Deck Information	6
Engine Information	6
PHOTOS	7
Side Deck	7
Foredeck	7
Profile 2	7
Dockside	7
Cockpit with Mezzanine	7
Teak Cockpit, new 2021	7
Rocker Launcher and Mezzanine Lounges	8
Helm Deck	8
Helm Deck Settee with Large Custom Ottoman, Portside	8
Dinette Lounge, Starboard Helm Deck	8
Helm Chair and Starboard Side Dual Bench Seat	8
Helm Chair and Portside Dual Bench Seat	8
Stidd Chairs	9
Triple Garmin Touchscreen MFDs	9
Helm Displays	9
Helm Deck Dinette, Starboard Side	9
Portside Helm Deck Lounge	9
Stidd Chairs	9

Teak Helm Pod with Thruster Buttons on Levers	10
Lower Cabin Entry	10
Sub-Zero Drawers	10
Galley	10
Sliding Door	10
Master Stateroom	10
Master Berth	11
Master Stateroom TV and Closet	11
Master Head Vanity	11
Master Head and Shower Stall	11
Aft Guest Stateroom	11
Forward Guest Stateroom	11
Companionway View of Forward Guest and Guest Head Entry	12
Forward Guest Stateroom and Closet	12
Guest Head	12
Guest Head Shower	12
Guest Head Vanity	12
Mezzanine and Helm Deck Stairs	12
Garmin and Fusion in Cockpit Haunch	13
Below Deck Fishbox, Portside	13
Below Deck Livewell and Storage Well, Starboard	13
Mezzanine Step, Portside	13
Mezzanine Step, Starboard	13
Beneath Starboard Mezz Lounge Seat	13
Beneath Portside Mezz Lounge Seat	14
Transom Door and Gate	14
Overhead Rod Storage Locker in Hardtop	14
Rod Storage on Aft Hardtop	14
Rupp Hydraulic Outriggers, Excellent Gelcoat Shine	14

Signal Mast and Antennas on Hardtop	14
Pulpit and Windlass	15
Engine Room Entryway	15
Engine Room	15
12-Cylinder Common-Rail MAN 1400HP	15
Starboard Motor	15
Front of Portside Motor	15
Port Motor	16
Generator and Primary Fuel Filters	16
Power Steering	16
Central Seawater System	16
Aft View	16
Profile 2	16
34 Knot Cruising	17
Making Way	17
A Touch Below 40 Knots WOT	17
Profile 3	17
Profile 4	17
Profile 5	17
Aft Fly Canvas Cover	18
CONTACTS	19
Contact details	19
Telephones	19
Office hours	19
Address	19

SPECIFICATIONS

Overview

This 2016 52' Viking open model is one of the best express style sportfish/cruiser vessels built. Viking Yachts combined exceptional build quality, blistering speed, soft ride, and luxury accommodations in the 52 to create a legendary vessel. Notably low hours on her 1400hp MAN common rails and a custom 3 stateroom layout that sets her apart from all her available sisterships on the market. She has completed full services on the engines, new bedding, and a recent complete detailing. She's in excellent condition and ready to cruise or fish.

Basic Information

Category: Sport Fisherman

Model Year: 2016

Year Built: 2015

Country: United States

Dimensions

LOA: 52' (15.85m)

Beam: 17.5

Speed, Capacities and Weight

Cruise Speed: 34 Knots Kts. (39 MPH)

Max Speed: 40 Knots Kts. (46 MPH)

Gross Tonnage: 34.3 Pounds

Water Capacity: 186 Gallons

Holding Tank: 57 Gal Gallons

Fuel Capacity: 1467 Gal Gallons

Accommodations

Total Cabins: 3

Total Heads: 2

Hull and Deck Information

Hull Material: Fiberglass

Hull Configuration: Modified V-Hull

Hull Color: White

Hull Designer: Viking Yachts

Exterior Designer: Viking

Engine Information

Engines: 2

Manufacturer: MAN

Engine Type: Inboard

Fuel Type: Diesel

PHOTOS

Side Deck



Foredeck



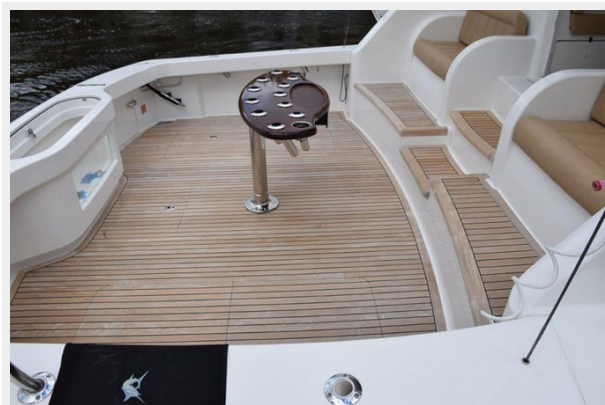
Profile 2



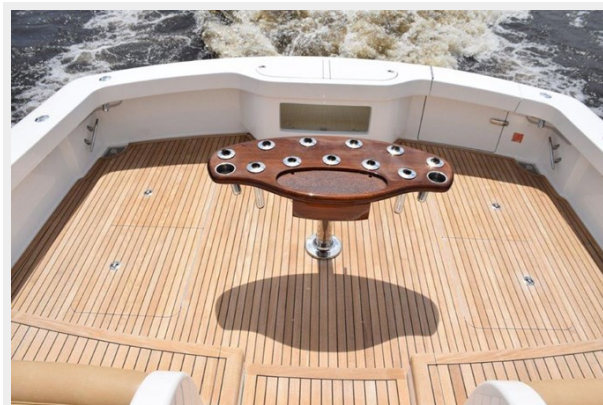
Dockside



Cockpit with Mezzanine



Teak Cockpit, new 2021



Rocker Launcher and Mezzanine Lounges



Helm Deck



Helm Deck Settee with Large Custom Ottoman, Portside



Dinette Lounge, Starboard Helm Deck



Helm Chair and Starboard Side Dual Bench Seat



Helm Chair and Portside Dual Bench Seat



Stidd Chairs



Triple Garmin Touchscreen MFDs



Helm Displays



Helm Deck Dinette, Starboard Side



Portside Helm Deck Lounge



Stidd Chairs



Teak Helm Pod with Thruster Buttons on Levers



Lower Cabin Entry



Sub-Zero Drawers



Galley



Sliding Door



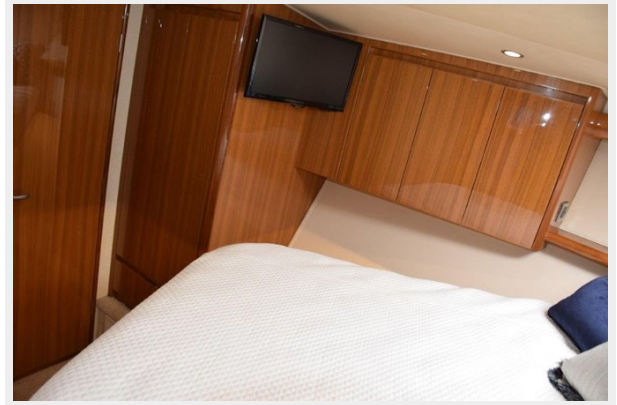
Master Stateroom



Master Berth



Master Stateroom TV and Closet



Master Head Vanity



Master Head and Shower Stall



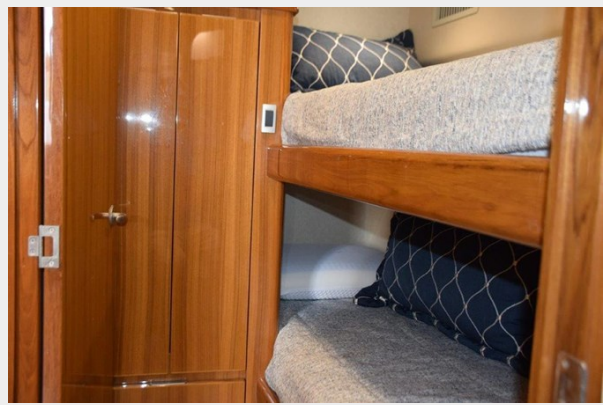
Aft Guest Stateroom



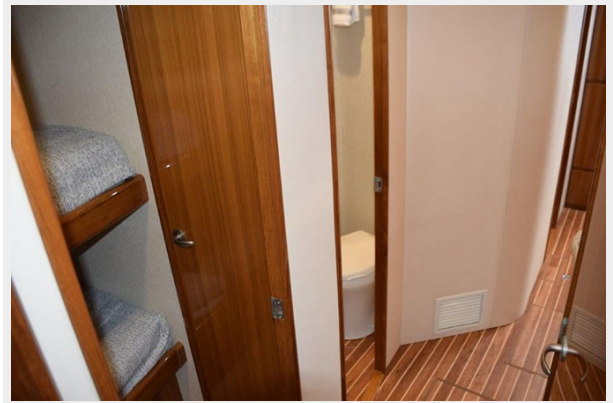
Forward Guest Stateroom



Forward Guest Stateroom and Closet



Companionway View of Forward Guest and Guest Head Entry



Guest Head



Guest Head Shower



Guest Head Vanity



Mezzanine and Helm Deck Stairs



Garmin and Fusion in Cockpit Haunch



Below Deck Fishbox, Portside



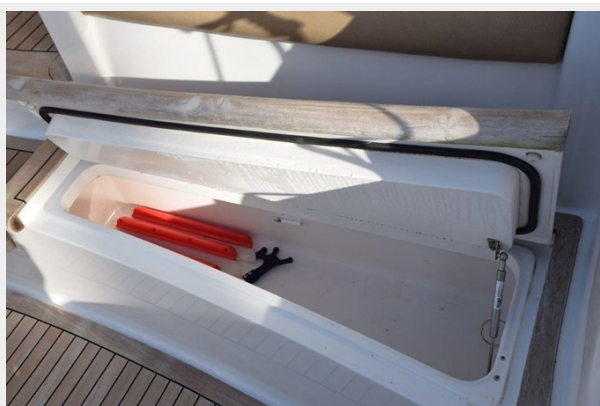
Below Deck Livewell and Storage Well, Starboard



Mezzanine Step, Portside



Mezzanine Step, Starboard



Beneath Starboard Mezz Lounge Seat



Beneath Portside Mezz Lounge Seat



Transom Door and Gate



Overhead Rod Storage Locker in Hardtop



Rod Storage on Aft Hardtop



Rupp Hydraulic Outriggers, Excellent Gelcoat Shine



Signal Mast and Antennas on Hardtop



Pulpit and Windlass



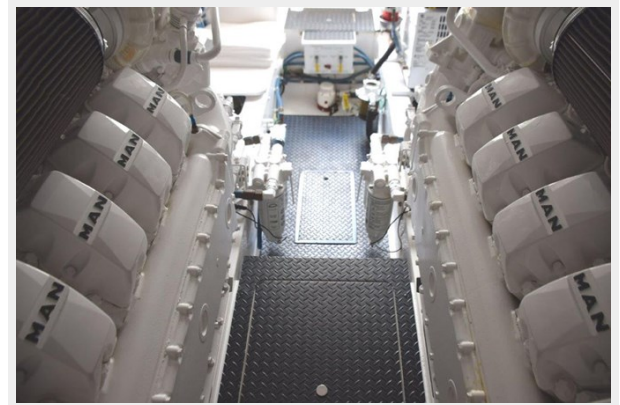
Engine Room Entryway



Engine Room



12-Cylinder Common-Rail MAN 1400HP



Starboard Motor



Front of Portside Motor



Port Motor



Generator and Primary Fuel Filters



Power Steering



Central Seawater System



Aft View



Profile 2



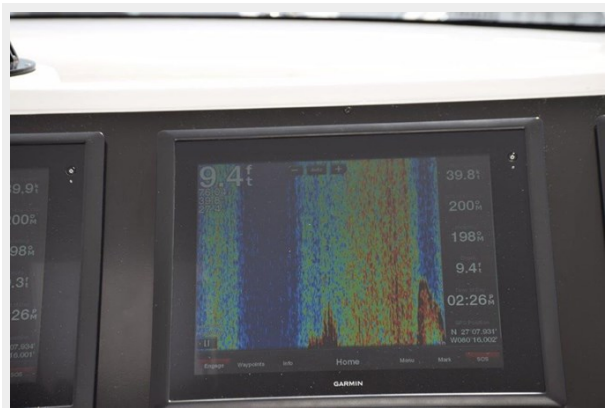
34 Knot Cruising



Making Way



A Touch Below 40 Knots WOT



Profile 3



Profile 4



Profile 5



Aft Fly Canvas Cover



CONTACTS

Andrey Shestakov, leading yacht broker of the sales department of Shestakov Yacht Sales Inc. Shestakov Yacht Sales Inc., the official representative of the Miami/Fort Lauderdale FL headquarters.

Contact details

Email: andrey@shestakovyachtsales.com

Web: shestakovyachtsales.com/en/

Telephones

USA: +1(954)274-4435

Office hours

Monday – Saturday: **9:00 - 21:00** EDT

Sunday: **closed**

Address



Harbour Towne Marina, 850 NE 3rd St,
STE 213, Dania, FL 33004