

## EMERALD — BENETEAU



**Builder:** BENETEAU

**Year Built:** 1995

**Model:** Cruising Sailboat

**Price:** \$79,900 USD

**Location:** United States

**LOA:** 42' (12.8mm)

**Beam:** 13.5

**Min Draft:** 5' 11" (1.8mm)

**Cruise Speed:** 7 Knots Kts. (8 MPH)

**Max Speed:** 8.5 Knots Kts. (10 MPH)

Our experienced yacht broker, Andrey Shestakov, will help you choose and buy a yacht that best suits your needs **EMERALD — BENETEAU** from our catalogue. Presently, at Shestakov Yacht Sales Inc., we have a wide variety of yachts available on our sale's list. We also work in close contact with all the big yacht manufacturers from all over the world.

If you would like to buy a yacht **EMERALD — BENETEAU** or would like help answering any questions concerning purchasing, selling or chartering a yacht, please call **+1(954)274-4435**

# TABLE OF CONTENTS

TABLE OF CONTENTS	2
SPECIFICATIONS	4
Overview	4
Basic Information	4
Dimensions	4
Speed, Capacities and Weight	4
Accommodations	4
Hull and Deck Information	5
Engine Information	5
PHOTOS	6
cockpit	6
port side profile	6
SAIL 2	6
sail	6
aft cabin 1	7
salon 1	7
bottom	7
engine	7
galley 3	8
furler	8
pullman 3	8
nav table 1	8
chain plate	8
cockpit 4	8
cockpit	9
pullman 1	9
salon 3	9
CONTACTS	10

---

Contact details	10
Telephones	10
Office hours	10
Address	10

---

# SPECIFICATIONS

---

## Overview

---

### Basic Information

---

**Category:** Cruising Sailboat

**Model Year:** 1995

**Year Built:** 1995

**Country:** United States

### Dimensions

---

**LOA:** 42' (12.8mm)

**Beam:** 13.5

**Min Draft:** 5' 11" (1.8mm)

### Speed, Capacities and Weight

---

**Cruise Speed:** 7 Knots Kts. (8 MPH)

**Cruise Speed Range:** 120

**Max Speed:** 8.5 Knots Kts. (10 MPH)

**Max Speed Range:** 75 Kts.

**Gross Tonnage:** 18220 Pounds

**Water Capacity:** 132 Gallons

**Holding Tank:** 21 Gal Gallons

**Fuel Capacity:** 53 Gal Gallons

### Accommodations

---

**Total Cabins:** 2

**Sleeps:** 6

**Total Heads:** 2

---

## Hull and Deck Information

---

**Hull Material:** Fiberglass

**Deck Material:** Fiberglass

**Hull Configuration:** Monohull

**Hull Designer:** Bruce Farr

**Interior Designer:** Beneteau

---

## Engine Information

---

**Engines:** 1

**Manufacturer:** Perkins

**Engine Type:** Inboard

**Fuel Type:** Diesel

# PHOTOS

**cockpit**



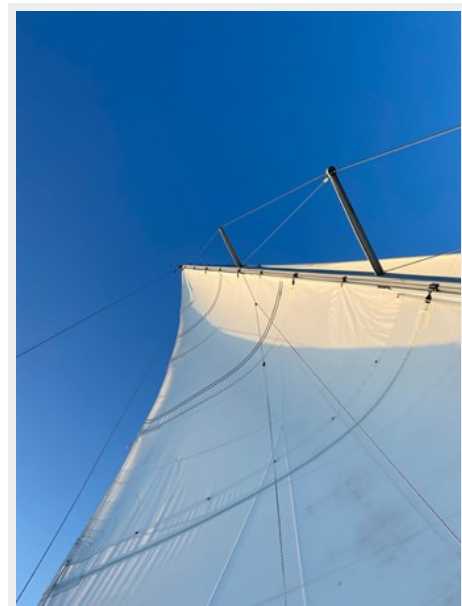
**port side profile**



**SAIL 2**



**sail**



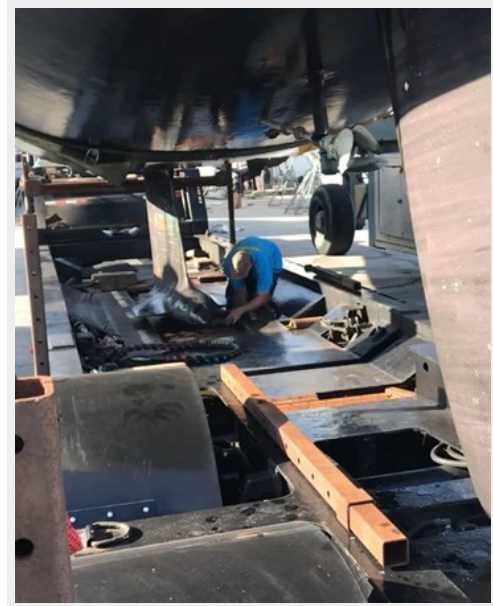
**aft cabin 1**



**salon 1**



**bottom**



**engine**



galley 3



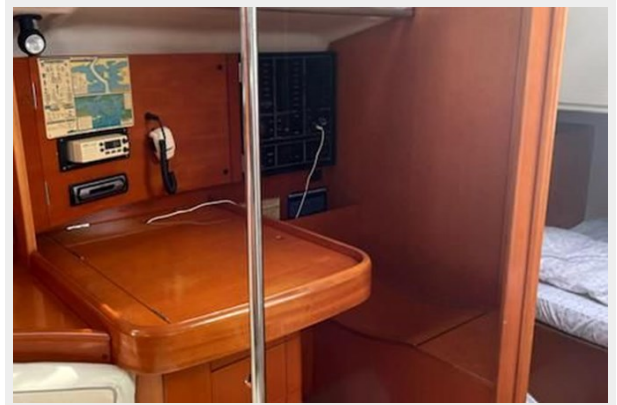
furler



pullman 3



nav table 1



chain plate



cockpit 4





**pullman 1**



**cockpit**



**salon 3**



# CONTACTS

---

Andrey Shestakov, leading yacht broker of the sales department of Shestakov Yacht Sales Inc. Shestakov Yacht Sales Inc., the official representative of the Miami/Fort Lauderdale FL headquarters.

## Contact details

---

Email: [andrey@shestakovyachtsales.com](mailto:andrey@shestakovyachtsales.com)

Web: [shestakovyachtsales.com/en/](http://shestakovyachtsales.com/en/)

## Telephones

---

USA: +1(954)274-4435

## Office hours

---

Monday – Saturday: **9:00 - 21:00** EDT

Sunday: **closed**

## Address

---



Harbour Towne Marina, 850 NE 3rd St,  
STE 213, Dania, FL 33004