

CONQUISTADORA — BERTRAM



Builder: BERTRAM

Year Built: 1994

Model: Sport Fisherman

Price: \$325,000 USD

Location: United States

LOA: 50' (15.24mm)

Beam: 16.16

Min Draft: 4' 10" (1.46mm)

Max Draft: 5' (1.52mm)

Cruise Speed: 20 Knots Kts. (23 MPH)

Max Speed: 24 Knots Kts. (28 MPH)

Our experienced yacht broker, Andrey Shestakov, will help you choose and buy a yacht that best suits your needs **CONQUISTADORA — BERTRAM** from our catalogue. Presently, at Shestakov Yacht Sales Inc., we have a wide variety of yachts available on our sale's list. We also work in close contact with all the big yacht manufacturers from all over the world.

If you would like to buy a yacht **CONQUISTADORA — BERTRAM** or would like help answering any questions concerning purchasing, selling or chartering a yacht, please call **+1(954)274-4435**

TABLE OF CONTENTS

TABLE OF CONTENTS	2
SPECIFICATIONS	3
Overview	3
Basic Information	3
Dimensions	3
Speed, Capacities and Weight	3
Accommodations	3
Hull and Deck Information	4
Engine Information	4
PHOTOS	5
Sistership	5
Sistership	5
CONTACTS	19
Contact details	19
Telephones	19
Office hours	19
Address	19

SPECIFICATIONS

Overview

One of the most iconic, premium sportfishers ever built, the Bertram 50 is renowned for its quality of build, bluewater handling, rugged engineering, and fish-raising abilities. CONQUISTADORA has benefitted from a conscientious owner who has maintained her in top condition. She features the preferred galley up configuration, with forward queen, midship master, and third, two-bunk stateroom.

Basic Information

Category: Sport Fisherman

Model Year: 1994

Year Built: 1994

Country: United States

Dimensions

LOA: 50' (15.24mm)

Beam: 16.16

Min Draft: 4' 10" (1.46mm)

Max Draft: 5' (1.52mm)

Speed, Capacities and Weight

Cruise Speed: 20 Knots Kts. (23 MPH)

Max Speed: 24 Knots Kts. (28 MPH)

Gross Tonnage: 48 Pounds

Water Capacity: 175 Gallons

Holding Tank: 50 Gal Gallons

Fuel Capacity: 1045 Gal Gallons

Accommodations

Total Cabins: 3

Total Berths: 4

Sleeps: 6

Total Heads: 2

Hull and Deck Information

Hull Material: Fiberglass

Deck Material: Fiberglass

Hull Configuration: Deep Vee

Hull Color: White

Hull Designer: Bertram

Interior Designer: Bertram

Engine Information

Engines: 2

Manufacturer: Detroit Diesel

Engine Type: Inboard

Fuel Type: Diesel

PHOTOS

Sistership



Sistership

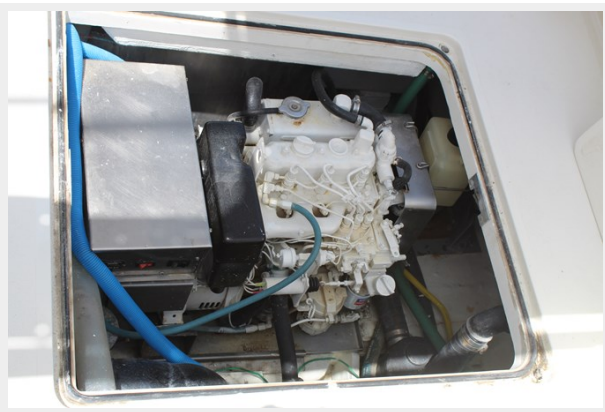














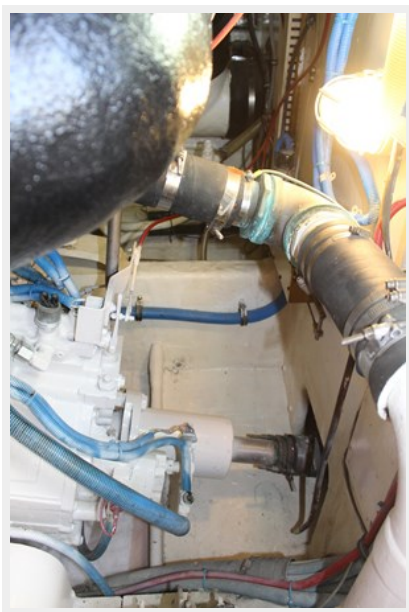
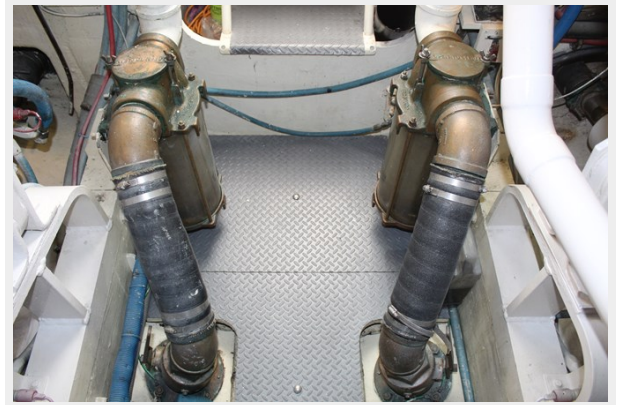
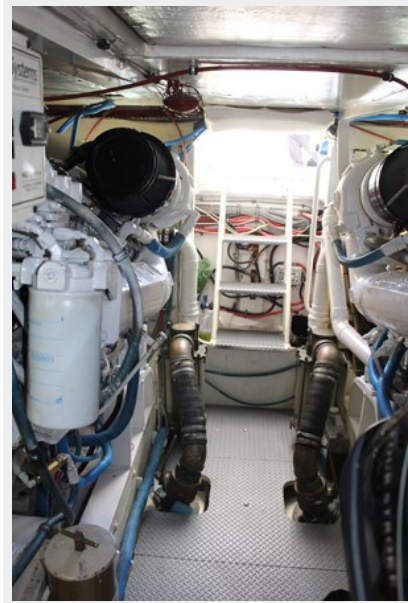














CONTACTS

Andrey Shestakov, leading yacht broker of the sales department of Shestakov Yacht Sales Inc. Shestakov Yacht Sales Inc., the official representative of the Miami/Fort Lauderdale FL headquarters.

Contact details

Email: andrey@shestakovyachtsales.com

Web: shestakovyachtsales.com/en/

Telephones

USA: +1(954)274-4435

Office hours

Monday – Saturday: **9:00 - 21:00** EDT

Sunday: **closed**

Address



Harbour Towne Marina, 850 NE 3rd St,
STE 213, Dania, FL 33004