

SOUTHERN CROSS — CARVER



Builder: CARVER

Year Built: 1999

Model: Pilothouse

Price: PRICE ON APPLICATION

Location: United States

LOA: 53' (16.15mm)

Beam: 15.33

Max Draft: 4' 9" (1.45mm)

Our experienced yacht broker, Andrey Shestakov, will help you choose and buy a yacht that best suits your needs **SOUTHERN CROSS — CARVER** from our catalogue. Presently, at Shestakov Yacht Sales Inc., we have a wide variety of yachts available on our sale's list. We also work in close contact with all the big yacht manufacturers from all over the world.

If you would like to buy a yacht **SOUTHERN CROSS — CARVER** or would like help answering any questions concerning purchasing, selling or chartering a yacht, please call **+1(954)274-4435**

TABLE OF CONTENTS

TABLE OF CONTENTS	2
SPECIFICATIONS	5
Overview	5
Basic Information	5
Dimensions	5
Speed, Capacities and Weight	6
Accommodations	6
Hull and Deck Information	6
Engine Information	6
PHOTOS	7
9272912_20240226075406589_1_XLARGE	7
9272912_20240226075407604_1_XLARGE	7
9272912_20240226075409710_1_XLARGE	7
9272912_20240226075408635_1_XLARGE	7
9272912_20240226075413518_1_XLARGE	8
9272912_20240226075410623_1_XLARGE	8
9272912_20240226075414518_1_XLARGE	8
9272912_20240226075415515_1_XLARGE	8
9272912_20240226075417533_1_XLARGE	9
9272912_20240226075416516_1_XLARGE	9
9272912_20240226075418529_1_XLARGE	9
9272912_20240226075419527_1_XLARGE	9
9272912_20240226075420531_1_XLARGE	9
9272912_20240226075425786_1_XLARGE	9
9272912_20240226075431947_1_XLARGE	10
9272912_20240226075438410_1_XLARGE	10
9272912_20240226075444616_1_XLARGE	10
9272912_20240226075451449_1_XLARGE	10

9272912_20240226075458030_1_XLARGE	10
9272912_20240226075505593_1_XLARGE	10
9272912_20240229024034160_1_XLARGE	11
9272912_20240229024040474_1_XLARGE	11
9272912_20240229030903249_1_XLARGE	11
9272912_20240229030911683_1_XLARGE	11
9272912_20240229030918736_1_XLARGE	11
9272912_20240229030925546_1_XLARGE	11
9272912_20240229030932487_1_XLARGE	12
9272912_20240229030939170_1_XLARGE	12
9272912_20240229030945240_1_XLARGE	12
9272912_20240229030951089_1_XLARGE	12
9272912_20240229030957204_1_XLARGE	12
9272912_20240229031003005_1_XLARGE	12
9272912_20240229031009101_1_XLARGE	13
9272912_20240229031014727_1_XLARGE	13
9272912_20240229031021713_1_XLARGE	13
9272912_20240229031028418_1_XLARGE	13
9272912_20240229031034268_1_XLARGE	13
9272912_20240229031041091_1_XLARGE	13
9272912_20240229031048616_1_XLARGE	13
9272912_20240229031055010_1_XLARGE	13
9272912_20240229031106969_1_XLARGE	14
9272912_20240229031100923_1_XLARGE	14
9272912_20240229031113577_1_XLARGE	14
9272912_20240229031120859_1_XLARGE	14
9272912_20240229031127487_1_XLARGE	14
9272912_20240229031134130_1_XLARGE	14
9272912_20240229031140439_1_XLARGE	15

9272912_20240229031146997_1_XLARGE	15
9272912_20240229031158967_1_XLARGE	15
9272912_20240229031152933_1_XLARGE	15
9272912_20240229031247464_1_XLARGE	16
9272912_20240229031241255_1_XLARGE	16
9272912_20240229031254452_1_XLARGE	16
CONTACTS	17
Contact details	17
Telephones	17
Office hours	17
Address	17

SPECIFICATIONS

Overview

The 530 Voyager is a beauty to behold. **WHERE IS AS IS.**

In outward appearance, it represents a design departure for the Pulaski, Wisconsin boat builder. There's a sense of fluidity to the lines motion even when the boat is standing still. The most impressive thing about the belowdecks area of the 530 Voyager is how spacious it feels, considering how much room there is. These are not cramped quarters. Underway, the 530 is as much a pleasure to pilot as it is to observe. Handling is quick, responsive and predictable, which is remarkable for a boat this size. Standard power on the Carver 530 Voyager was a pair of *450-horsepower Cummins 6CTA diesel inboards*, which generated a cruising speed of 23.5 MPH.

She **WHERE IS AS IS** ... with the following that is needed.

- ENGINES HAVE NOT BEEN STARTED IN 3 YEARS.
- GuestHead pump needs to be replaced.
- All electronics need to be updated.
- V birth A/C needs to be replaced.
- Pilothouse A/C needs to be replaced.
- 3 8D batteries need to be replaced
- NO TENDER!

Basic Information

Category: Pilothouse

Sub Category: Pilothouse

Model Year: 1999

Year Built: 1999

Country: United States

Dimensions

LOA: 53' (16.15mm)

Beam: 15.33

Max Draft: 4' 9" (1.45mm)

Speed, Capacities and Weight

Water Capacity: 200 Gallons

Holding Tank: 100 Gal Gallons

Fuel Capacity: 800 Gal Gallons

Accommodations

Total Cabins: 3

Hull and Deck Information

Hull Material: Fiberglass

Engine Information

Engines: 2

Manufacturer: Cummins

Engine Type: Inboard

Fuel Type: Diesel

PHOTOS

9272912_20240226075406589_1_XLARGE



9272912_20240226075407604_1_XLARGE



9272912_20240226075408635_1_XLARGE

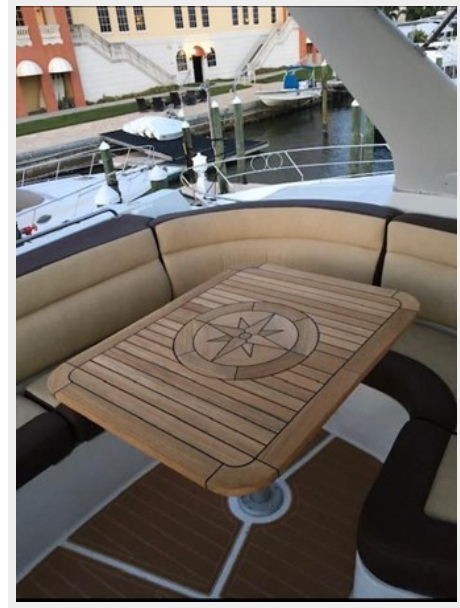


9272912_20240226075409710_1_XLARGE

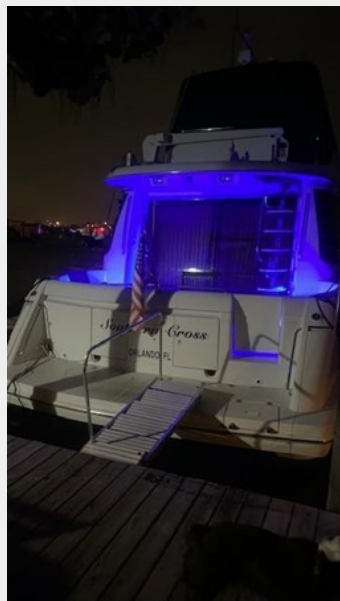


9272912_20240226075413518_1_XLARGE

9272912_20240226075410623_1_XLARGE



9272912_20240226075414518_1_XLARGE



9272912_20240226075415515_1_XLARGE



9272912_20240226075417533_1_XLARGE



9272912_20240226075416516_1_XLARGE



9272912_20240226075418529_1_XLARGE



9272912_20240226075419527_1_XLARGE



9272912_20240226075420531_1_XLARGE



9272912_20240226075425786_1_XLARGE



9272912_20240226075431947_1_XLARGE



9272912_20240226075438410_1_XLARGE



9272912_20240226075444616_1_XLARGE



9272912_20240226075451449_1_XLARGE



9272912_20240226075458030_1_XLARGE



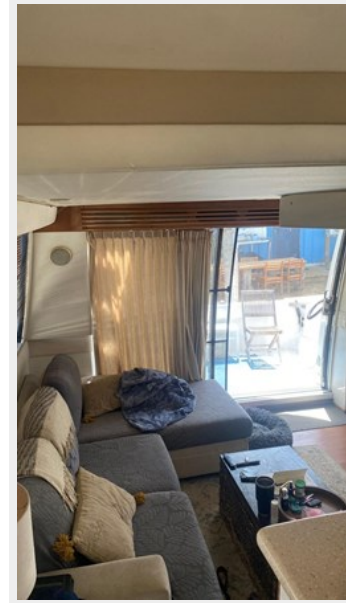
9272912_20240226075505593_1_XLARGE



9272912_20240229024034160_1_XLARGE



9272912_20240229024040474_1_XLARGE



9272912_20240229030903249_1_XLARGE



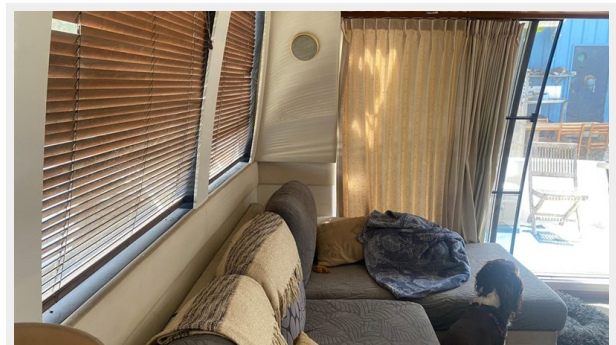
9272912_20240229030911683_1_XLARGE



9272912_20240229030918736_1_XLARGE



9272912_20240229030925546_1_XLARGE



9272912_20240229030932487_1_XLARGE



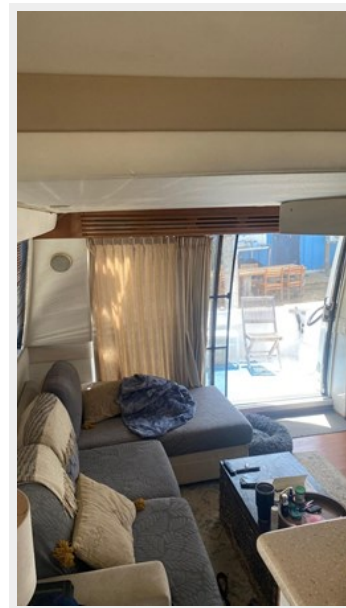
9272912_20240229030939170_1_XLARGE



9272912_20240229030945240_1_XLARGE



9272912_20240229030951089_1_XLARGE



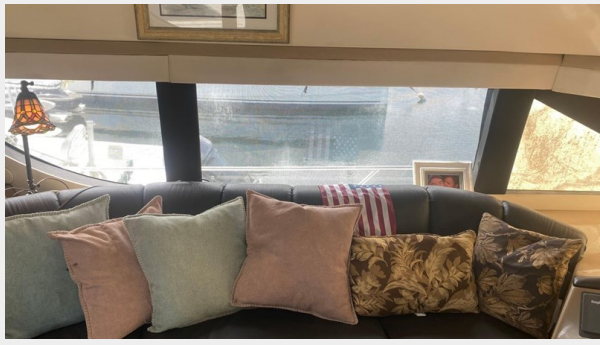
9272912_20240229030957204_1_XLARGE



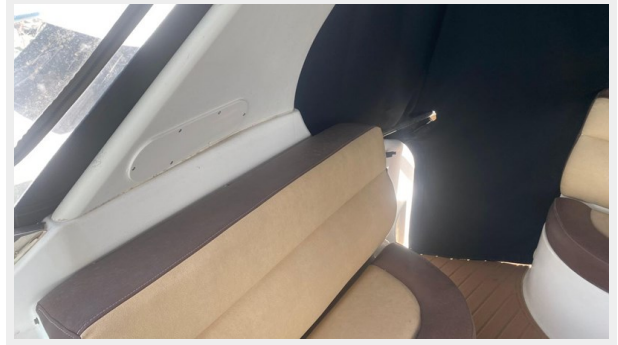
9272912_20240229031003005_1_XLARGE



9272912_20240229031009101_1_XLARGE



9272912_20240229031014727_1_XLARGE



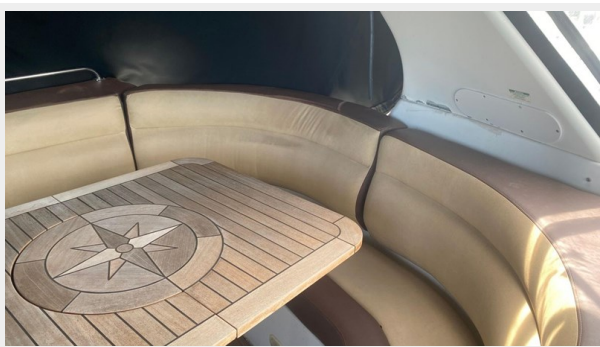
9272912_20240229031021713_1_XLARGE



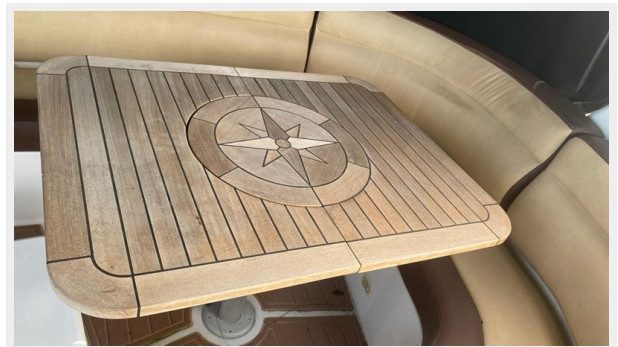
9272912_20240229031028418_1_XLARGE



9272912_20240229031034268_1_XLARGE



9272912_20240229031041091_1_XLARGE



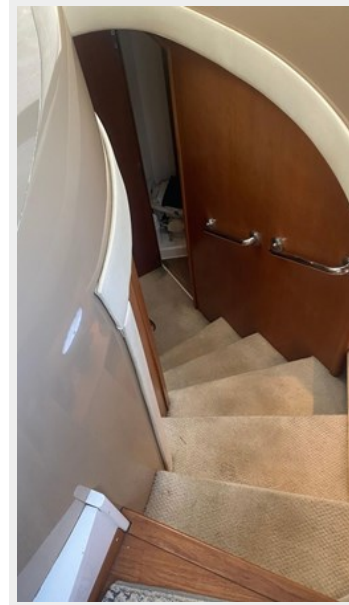
9272912_20240229031048616_1_XLARGE



9272912_20240229031055010_1_XLARGE



9272912_20240229031106969_1_XLARGE



9272912_20240229031100923_1_XLARGE



9272912_20240229031113577_1_XLARGE



9272912_20240229031120859_1_XLARGE



9272912_20240229031127487_1_XLARGE



9272912_20240229031134130_1_XLARGE



9272912_20240229031140439_1_XLARGE



9272912_20240229031146997_1_XLARGE



9272912_20240229031158967_1_XLARGE

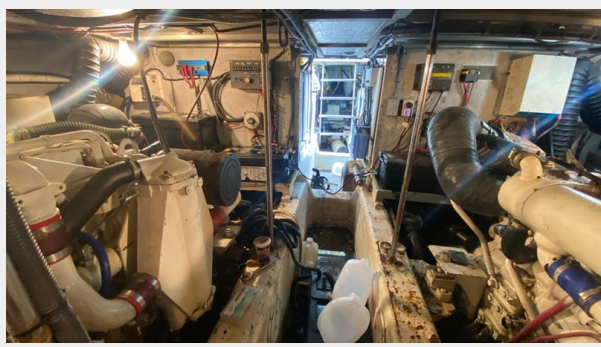
9272912_20240229031152933_1_XLARGE



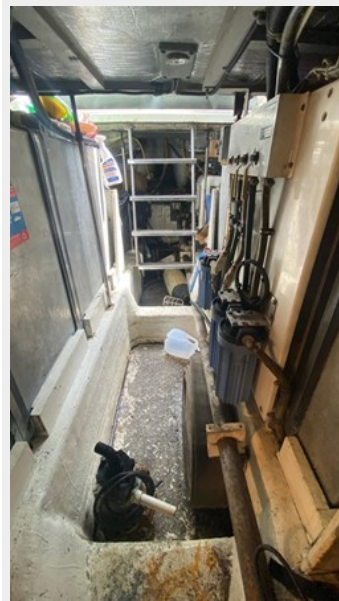
9272912_20240229031247464_1_XLARGE



9272912_20240229031241255_1_XLARGE



9272912_20240229031254452_1_XLARGE



CONTACTS

Andrey Shestakov, leading yacht broker of the sales department of Shestakov Yacht Sales Inc. Shestakov Yacht Sales Inc., the official representative of the Miami/Fort Lauderdale FL headquarters.

Contact details

Email: andrey@shestakovyachtsales.com

Web: shestakovyachtsales.com/en/

Telephones

USA: +1(954)274-4435

Office hours

Monday – Saturday: **9:00 - 21:00** EDT

Sunday: **closed**

Address



Harbour Towne Marina, 850 NE 3rd St,
STE 213, Dania, FL 33004