

M&D — HATTERAS



Builder: HATTERAS

Year Built: 1984

Model: Convertible

Price: \$168,000 USD

Location: United States

LOA: 52' (15.85mm)

Beam: 16.25

Max Draft: 5' 3" (1.6mm)

Our experienced yacht broker, Andrey Shestakov, will help you choose and buy a yacht that best suits your needs **M&D — HATTERAS** from our catalogue. Presently, at Shestakov Yacht Sales Inc., we have a wide variety of yachts available on our sale's list. We also work in close contact with all the big yacht manufacturers from all over the world.

If you would like to buy a yacht **M&D — HATTERAS** or would like help answering any questions concerning purchasing, selling or chartering a yacht, please call **+1(954)274-4435**

TABLE OF CONTENTS

TABLE OF CONTENTS	2
SPECIFICATIONS	6
Overview	6
Basic Information	6
Dimensions	7
Speed, Capacities and Weight	7
Accommodations	7
Hull and Deck Information	7
Engine Information	7
PHOTOS	8
9168082_958474120_0_080220241630_1	8
9168082_958474126_0_080220241630_2	8
9168082_958474131_0_080220241630_3	8
9168082_958474123_0_080220241630_4	8
9168082_956163317_0_141220230905_0	9
9168082_956163320_0_141220230905_3	9
9168082_956163321_0_141220230905_4	9
9168082_956163322_0_141220230905_5	9
9168082_956163323_0_141220230905_6	9
9168082_956163324_0_141220230905_7	9
9168082_956163325_0_141220230905_8	10
9168082_956163326_0_141220230905_9	10
9168082_956163327_0_141220230905_10	10
9168082_956163328_0_141220230905_11	10
9168082_956163329_0_141220230905_12	10
9168082_956163330_0_141220230905_13	10
9168082_956163331_0_141220230905_14	11
9168082_956163332_0_141220230905_15	11

9168082_956163333_0_141220230905_16	11
9168082_956163334_0_141220230905_17	11
9168082_956163335_0_141220230905_18	11
9168082_956163336_0_141220230905_19	11
9168082_956163337_0_141220230905_20	12
9168082_956163338_0_141220230905_21	12
9168082_956163339_0_141220230905_22	12
9168082_956163340_0_141220230905_23	12
9168082_956163341_0_141220230905_24	12
9168082_956163342_0_141220230905_25	12
9168082_956163343_0_141220230905_26	13
9168082_956163344_0_141220230905_27	13
9168082_956163345_0_141220230905_28	13
9168082_956163346_0_141220230905_29	13
9168082_956163347_0_141220230905_30	13
9168082_956163348_0_141220230905_31	13
9168082_956163349_0_141220230905_32	14
9168082_956163350_0_141220230905_33	14
9168082_956163351_0_141220230905_34	14
9168082_956163352_0_141220230905_35	14
9168082_956163353_0_141220230905_36	14
9168082_956163354_0_141220230905_37	14
9168082_956163355_0_141220230905_38	15
9168082_956163356_0_141220230905_39	15
9168082_956163357_0_141220230905_40	15
9168082_956163358_0_141220230905_41	15
9168082_956163359_0_141220230905_42	15
9168082_956163360_0_141220230905_43	15
9168082_956163361_0_141220230905_44	16

9168082_956163362_0_141220230905_45	16
9168082_956163363_0_141220230905_46	16
9168082_956163364_0_141220230905_47	16
9168082_956163365_0_141220230905_48	16
9168082_956163366_0_141220230905_49	16
9168082_956163367_0_141220230905_50	17
9168082_956163368_0_141220230905_51	17
9168082_956163369_0_141220230905_52	17
9168082_956163370_0_141220230905_53	17
9168082_956163371_0_141220230905_54	17
9168082_956163372_0_141220230905_55	17
9168082_956163373_0_141220230905_56	18
9168082_956163374_0_141220230905_57	18
9168082_956163375_0_141220230906_58	18
9168082_956163376_0_141220230906_59	18
9168082_956163377_0_141220230906_60	18
9168082_956163378_0_141220230906_61	18
9168082_956163379_0_141220230906_62	19
9168082_956163380_0_141220230906_63	19
9168082_956163381_0_141220230906_64	19
9168082_956163382_0_141220230906_65	19
9168082_956163383_0_141220230906_66	19
9168082_956163384_0_141220230906_67	19
9168082_958474127_0_080220241630_71	20
9168082_958474129_0_080220241631_72	20
CONTACTS	21
Contact details	21
Telephones	21
Office hours	21

Address

21

SPECIFICATIONS

Overview

This 52 Hatteras is a sport fishing yacht produced by Hatteras Yachts, a renowned American yacht manufacturer. The 52 is one of the most popular models in the Hatteras sport fishing line, known for its exceptional performance and comfort. She features a spacious cockpit, equipped with all the necessary amenities for serious fishing, including a large fish box, live bait well, and plenty of rod holders. The yacht also has a spacious flybridge, offering panoramic views and ample seating for guests. Inside, She boasts a luxurious interior with high-end finishes and materials. The salon features comfortable seating including a queen-size fold-out couch. Below deck are a fully equipped galley and 3 staterooms, each with its own private head and shower. The cockpit is humongous. Bigger than it needs to be it is, perhaps, one explanation for why this model was not a bigger seller. It appeals very well to the serious tournament man, but to the less avid who have other ideas in mind such as social occasions, he's likely to turn elsewhere. Even so, for a combined use boat, it still has a lot to offer, not the least of which is the usual good bridge layout. In this case, a bench seat forward of the helm, and another larger seat along the length of the starboard side. Comfortable seating is for 7-8 without crowding. Pipe frame tops are the usual, and in this case they fit very well, allowing for easy install soft enclosures without a lot of contortions. Another notable feature is the amount of unobstructed deck space available for moving around easily. Typical of most social occasions, many people choose to stand rather than sit, and there is plenty of room for that here without putting your butt in the face of someone sitting. The tubular stainless hand rail around the windshield is one of the usual features of a better quality yacht that allows people to hang on without grabbing onto the Plexiglas windscreen and breaking it. Powering her are twin Detroit 8V92 diesel engines, which provide a cruising speed of 14 knots at 52GPH. The yacht also features a range of advanced navigation and communication systems, making it a safe and reliable choice for long-range fishing expeditions. brand new generator installed. Sport fishing is what she's designed for, but she'd make for a great cruising boat but for one thing: The three staterooms are amazing. There are nice size heads with stall showers.

Basic Information

Category: Convertible

Sub Category: Convertible

Model Year: 1984

Year Built: 1984

Country: United States

Dimensions

LOA: 52' (15.85m)

Beam: 16.25

Max Draft: 5' 3" (1.6m)

Speed, Capacities and Weight

Water Capacity: 190 Gallons

Holding Tank: 70 Gal Gallons

Fuel Capacity: 890 Gal Gallons

Accommodations

Total Cabins: 3

Hull and Deck Information

Hull Material: Fiberglass

Engine Information

Engines: 2

Manufacturer: Detroit Diesel

Engine Type: Inboard

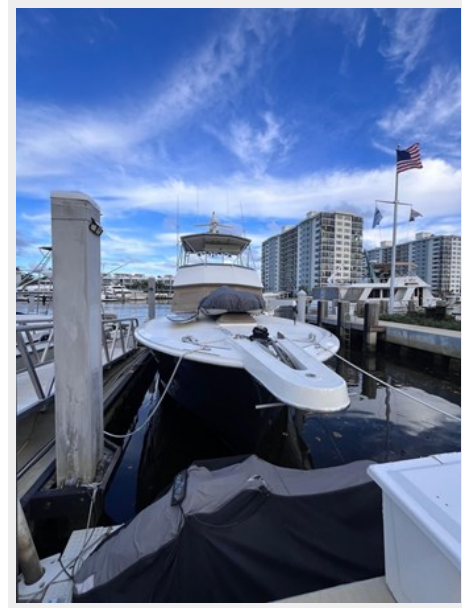
Fuel Type: Diesel

PHOTOS

9168082_958474120_0_080220241630_1



9168082_958474126_0_080220241630_2



9168082_958474131_0_080220241630_3



9168082_958474123_0_080220241630_4



9168082_956163317_0_141220230905_0



9168082_956163320_0_141220230905_3



9168082_956163321_0_141220230905_4



9168082_956163322_0_141220230905_5



9168082_956163323_0_141220230905_6



9168082_956163324_0_141220230905_7



9168082_956163325_0_141220230905_8



9168082_956163326_0_141220230905_9



9168082_956163327_0_141220230905_10



9168082_956163328_0_141220230905_11



9168082_956163329_0_141220230905_12



9168082_956163330_0_141220230905_13



9168082_956163331_0_141220230905_14



9168082_956163332_0_141220230905_15



9168082_956163333_0_141220230905_16



9168082_956163334_0_141220230905_17



9168082_956163335_0_141220230905_18



9168082_956163336_0_141220230905_19



9168082_956163337_0_141220230905_20



9168082_956163338_0_141220230905_21



9168082_956163339_0_141220230905_22



9168082_956163340_0_141220230905_23



9168082_956163341_0_141220230905_24



9168082_956163342_0_141220230905_25



9168082_956163343_0_141220230905_26



9168082_956163344_0_141220230905_27



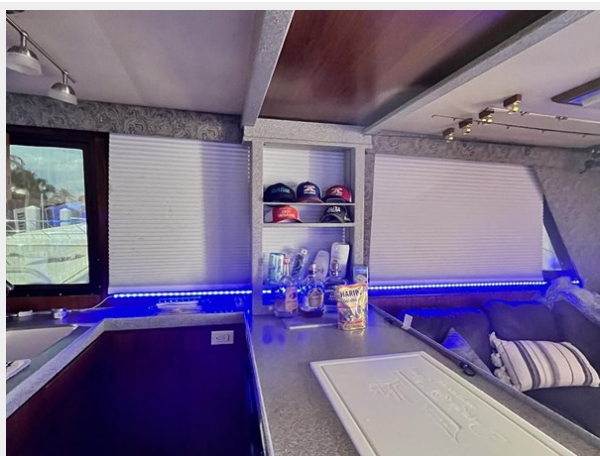
9168082_956163345_0_141220230905_28



9168082_956163346_0_141220230905_29



9168082_956163347_0_141220230905_30



9168082_956163348_0_141220230905_31



9168082_956163349_0_141220230905_32



9168082_956163350_0_141220230905_33



9168082_956163351_0_141220230905_34



9168082_956163352_0_141220230905_35



9168082_956163353_0_141220230905_36



9168082_956163354_0_141220230905_37



9168082_956163355_0_141220230905_38



9168082_956163356_0_141220230905_39



9168082_956163357_0_141220230905_40



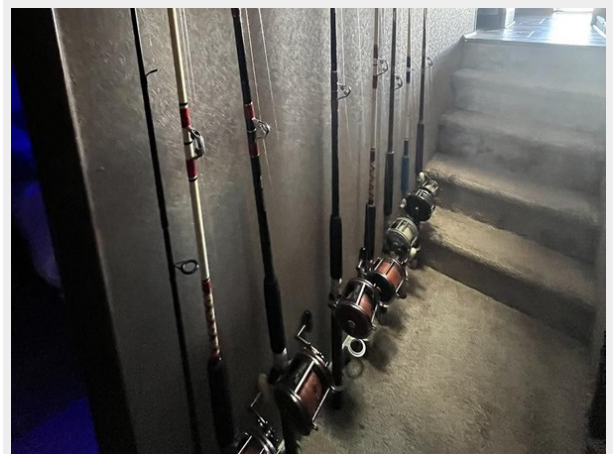
9168082_956163358_0_141220230905_41



9168082_956163359_0_141220230905_42



9168082_956163360_0_141220230905_43



9168082_956163361_0_141220230905_44



9168082_956163362_0_141220230905_45



9168082_956163363_0_141220230905_46



9168082_956163364_0_141220230905_47



9168082_956163365_0_141220230905_48



9168082_956163366_0_141220230905_49



9168082_956163367_0_141220230905_50



9168082_956163368_0_141220230905_51



9168082_956163369_0_141220230905_52



9168082_956163370_0_141220230905_53



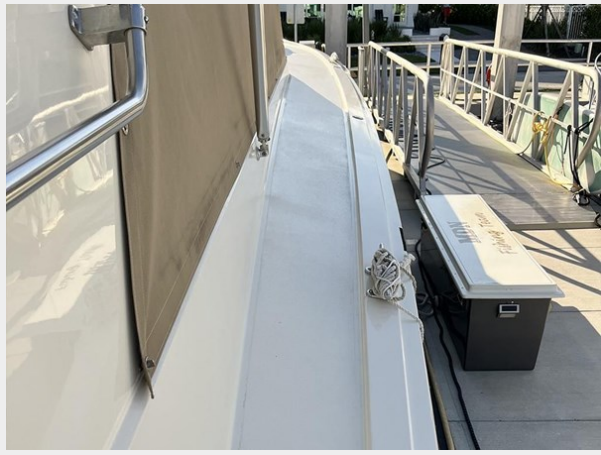
9168082_956163371_0_141220230905_54



9168082_956163372_0_141220230905_55



9168082_956163373_0_141220230905_56



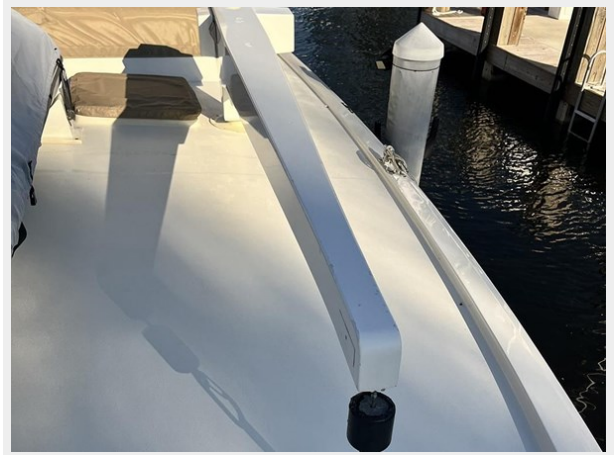
9168082_956163374_0_141220230905_57



9168082_956163375_0_141220230906_58



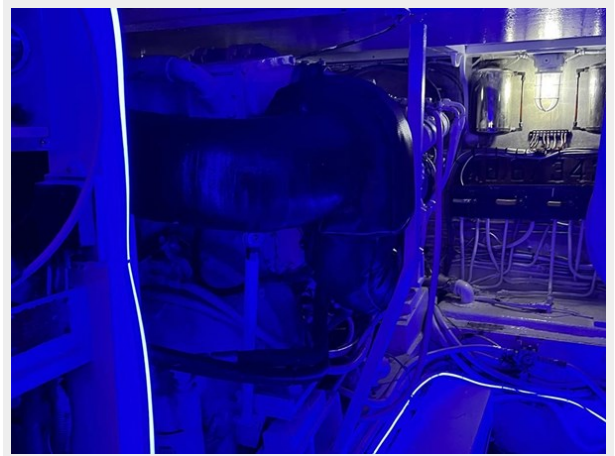
9168082_956163376_0_141220230906_59



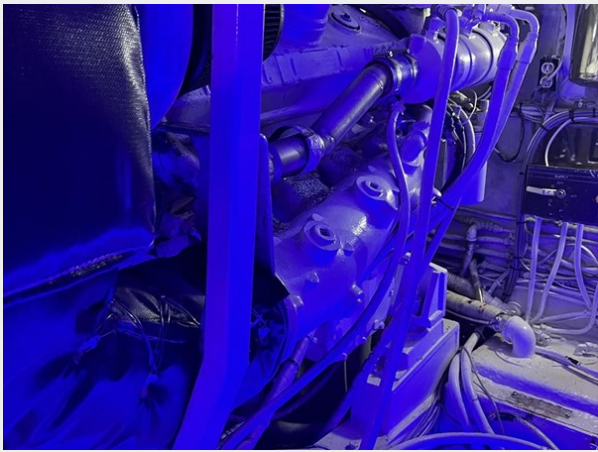
9168082_956163377_0_141220230906_60



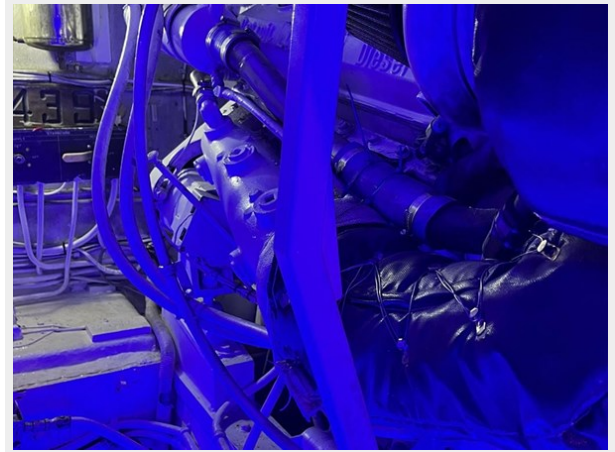
9168082_956163378_0_141220230906_61



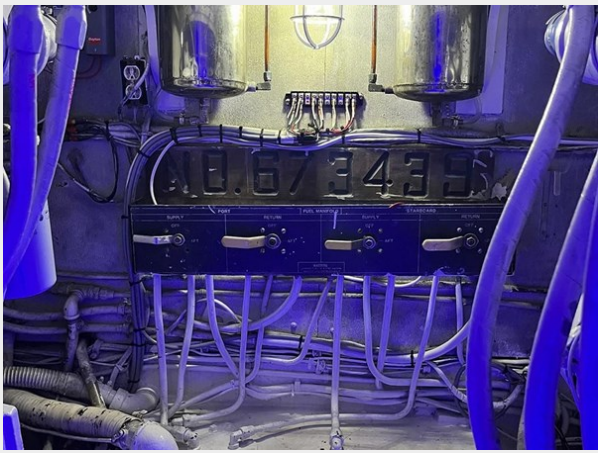
9168082_956163379_0_141220230906_62



9168082_956163380_0_141220230906_63



9168082_956163381_0_141220230906_64



9168082_956163382_0_141220230906_65



9168082_956163383_0_141220230906_66



9168082_956163384_0_141220230906_67



9168082_958474127_0_080220241630_71



9168082_958474129_0_080220241631_72



CONTACTS

Andrey Shestakov, leading yacht broker of the sales department of Shestakov Yacht Sales Inc. Shestakov Yacht Sales Inc., the official representative of the Miami/Fort Lauderdale FL headquarters.

Contact details

Email: andrey@shestakovyachtsales.com

Web: shestakovyachtsales.com/en/

Telephones

USA: +1(954)274-4435

Office hours

Monday – Saturday: **9:00 - 21:00** EDT

Sunday: **closed**

Address



Harbour Towne Marina, 850 NE 3rd St,
STE 213, Dania, FL 33004