

## SILVERBACK — LUHRS



**Builder:** LUHRS

**Year Built:** 2003

**Model:** Convertible

**Price:** \$380,000 USD

**Location:** United States

**LOA:** 34' (10.36mm)

**Beam:** 13.66

**Max Draft:** 5' 2" (1.57mm)

Our experienced yacht broker, Andrey Shestakov, will help you choose and buy a yacht that best suits your needs **SILVERBACK — LUHRS** from our catalogue. Presently, at Shestakov Yacht Sales Inc., we have a wide variety of yachts available on our sale's list. We also work in close contact with all the big yacht manufacturers from all over the world.

If you would like to buy a yacht **SILVERBACK — LUHRS** or would like help answering any questions concerning purchasing, selling or chartering a yacht, please call **+1(954)274-4435**

# TABLE OF CONTENTS

TABLE OF CONTENTS	2
SPECIFICATIONS	5
Overview	5
Basic Information	5
Dimensions	5
Speed, Capacities and Weight	5
Accommodations	6
Hull and Deck Information	6
Engine Information	6
PHOTOS	7
9165469_956045164_0_121220230534_1	7
9165469_956045165_0_121220230534_2	7
9165469_956045166_0_121220230534_3	7
9165469_956045167_0_121220230534_4	7
9165469_956045168_0_121220230534_5	8
9165469_956045169_0_121220230534_6	8
9165469_956210665_0_151220231020_7	8
9165469_956045170_0_121220230534_7	8
9165469_956045172_0_121220230534_9	9
9165469_956045171_0_121220230534_8	9
9165469_956045173_0_121220230534_10	9
9165469_956045174_0_121220230534_11	9
9165469_956045175_0_121220230534_12	10
9165469_956045176_0_121220230534_13	10
9165469_956045177_0_121220230534_14	10
9165469_956045178_0_121220230534_15	10
9165469_956045180_0_121220230534_17	11
9165469_956045179_0_121220230534_16	11

---

9165469_956045182_0_121220230534_19	11
9165469_956045181_0_121220230534_18	11
9165469_956045183_0_121220230534_20	12
9165469_956045184_0_121220230534_21	12
9165469_956045185_0_121220230534_22	12
9165469_956045186_0_121220230535_23	12
9165469_956045187_0_121220230535_24	13
9165469_956045188_0_121220230535_25	13
9165469_956045189_0_121220230535_26	13
9165469_956045190_0_121220230535_27	13
9165469_956045191_0_121220230535_28	14
9165469_956045192_0_121220230535_29	14
9165469_956045193_0_121220230535_30	14
9165469_956045194_0_121220230536_31	14
9165469_956045195_0_121220230536_32	15
9165469_956045196_0_121220230536_33	15
9165469_956045197_0_121220230536_34	15
9165469_956045198_0_121220230536_35	15
9165469_956045199_0_121220230536_36	16
9165469_956045200_0_121220230536_37	16
9165469_956045201_0_121220230536_38	16
9165469_956045202_0_121220230536_39	16
9165469_956045203_0_121220230537_40	17
9165469_956045204_0_121220230537_41	17
9165469_956045206_0_121220230537_43	17
9165469_956045205_0_121220230537_42	17
9165469_956045207_0_121220230537_44	18
9165469_956045163_0_121220230534_0	18
CONTACTS	19

---

---

Contact details	19
Telephones	19
Office hours	19
Address	19

# SPECIFICATIONS

---

## Overview

---

This is the Luhrs model that everyone wants, twin low hours Yanmar Engines (30 Hours), Just painted. Tasteful interior with Satin teak cabinetry, upgraded Flatscreen TVs, Functional Galley, opposing sofa's with hi/low table, excellent engine and mechanical access, Stand up shower to port, and enclosed head and vanity to Stbd, Good sized master stateroom forward with ample storage. Roomy cockpit with transom door, transom fishbox, bait prep and additional fishbox. 2 zones of Heating/Cooling, new Batteries and Battery Charger. Very Nice condition helm upholstery and 4 sided eisenglass enclosure with Helm chair and Dash covers. There is a lot to like about this particular 340 Luhrs. Luhrs supplies storage for six 6-foot rod-and-reel combos in the brow on the bridge. Looking at how people bring food and drinks aboard inspired Luhrs to design portable cloth cooler bags with built-in cold plates that you can plug into a 12-volt power source in your car on the trip to the boat. Fill it at home, carry it aboard and put it in the designated space on the flybridge and plug it into the awaiting power outlet. **\*\*Interior\*\*** I'd classify storage capacity on this 35-footer as monumental. The forward cabin sports an island double berth with lots of storage beneath, making linen duties much easier.

## Basic Information

---

**Category:** Convertible

**Sub Category:** Convertible

**Model Year:** 2003

**Year Built:** 2003

**Country:** United States

## Dimensions

---

**LOA:** 34' (10.36mm)

**Beam:** 13.66

**Max Draft:** 5' 2" (1.57mm)

## Speed, Capacities and Weight

---

**Water Capacity:** 90 Gallons

**Holding Tank:** 40 Gal Gallons

**Fuel Capacity:** 300 Gal Gallons

---

## Accommodations

---

**Total Cabins:** 1

---

## Hull and Deck Information

---

**Hull Material:** Fiberglass

---

## Engine Information

---

**Engines:** 2

**Manufacturer:** Yanmar

**Engine Type:** Inboard

**Fuel Type:** Diesel

# PHOTOS

9165469\_956045164\_0\_121220230534\_1



9165469\_956045165\_0\_121220230534\_2



9165469\_956045166\_0\_121220230534\_3



9165469\_956045167\_0\_121220230534\_4



9165469\_956045168\_0\_121220230534\_5



9165469\_956045169\_0\_121220230534\_6



9165469\_956210665\_0\_151220231020\_7



9165469\_956045170\_0\_121220230534\_7





9165469\_956045172\_0\_121220230534\_9

9165469\_956045171\_0\_121220230534\_8



9165469\_956045173\_0\_121220230534\_10

9165469\_956045174\_0\_121220230534\_11



9165469\_956045175\_0\_121220230534\_12



9165469\_956045176\_0\_121220230534\_13



9165469\_956045177\_0\_121220230534\_14



9165469\_956045178\_0\_121220230534\_15



9165469\_956045179\_0\_121220230534\_16



9165469\_956045180\_0\_121220230534\_17



9165469\_956045181\_0\_121220230534\_18



9165469\_956045182\_0\_121220230534\_19



9165469\_956045183\_0\_121220230534\_20



9165469\_956045184\_0\_121220230534\_21



9165469\_956045185\_0\_121220230534\_22



9165469\_956045186\_0\_121220230535\_23



9165469\_956045187\_0\_121220230535\_24



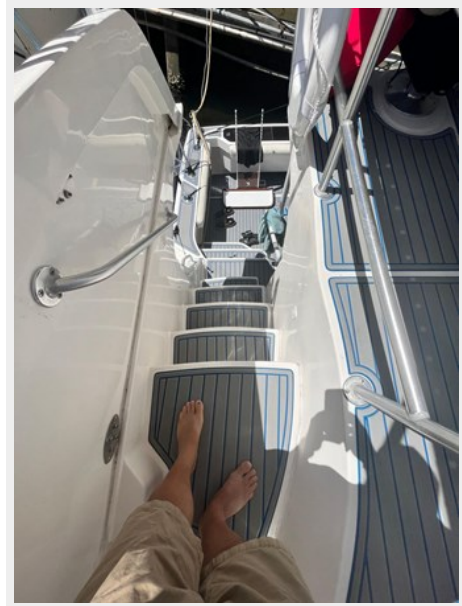
9165469\_956045188\_0\_121220230535\_25



9165469\_956045189\_0\_121220230535\_26



9165469\_956045190\_0\_121220230535\_27



9165469\_956045191\_0\_121220230535\_28



9165469\_956045192\_0\_121220230535\_29



9165469\_956045193\_0\_121220230535\_30



9165469\_956045194\_0\_121220230536\_31



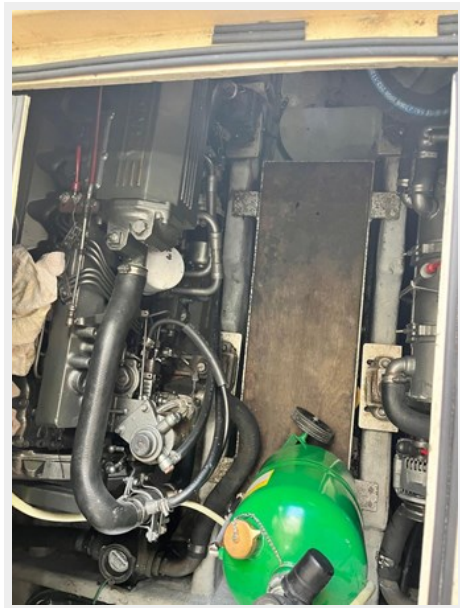
9165469\_956045195\_0\_121220230536\_32



9165469\_956045196\_0\_121220230536\_33



9165469\_956045197\_0\_121220230536\_34



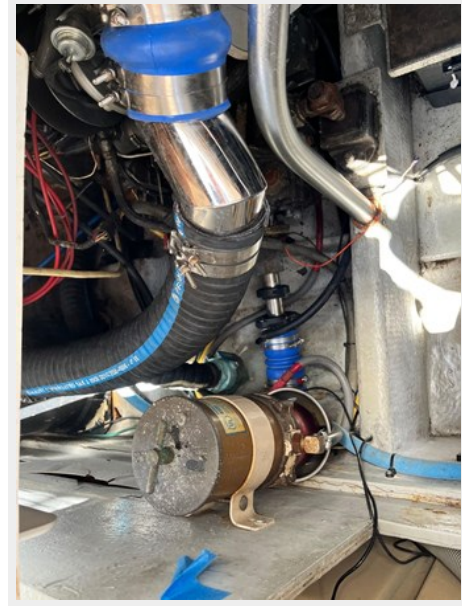
9165469\_956045198\_0\_121220230536\_35



9165469\_956045199\_0\_121220230536\_36



9165469\_956045200\_0\_121220230536\_37



9165469\_956045201\_0\_121220230536\_38



9165469\_956045202\_0\_121220230536\_39





9165469\_956045203\_0\_121220230537\_40



9165469\_956045204\_0\_121220230537\_41



9165469\_956045205\_0\_121220230537\_42



9165469\_956045206\_0\_121220230537\_43



9165469\_956045207\_0\_121220230537\_44



9165469\_956045163\_0\_121220230534\_0



---

# CONTACTS

---

Andrey Shestakov, leading yacht broker of the sales department of Shestakov Yacht Sales Inc. Shestakov Yacht Sales Inc., the official representative of the Miami/Fort Lauderdale FL headquarters.

---

## Contact details

---

Email: [andrey@shestakovyachtsales.com](mailto:andrey@shestakovyachtsales.com)

Web: [shestakovyachtsales.com/en/](http://shestakovyachtsales.com/en/)

---

## Telephones

---

USA: +1(954)274-4435

---

## Office hours

---

Monday – Saturday: **9:00 - 21:00** EDT

Sunday: **closed**

---

## Address

---



Harbour Towne Marina, 850 NE 3rd St,  
STE 213, Dania, FL 33004