

1985 SCANMAR COCKPIT SLOOP — SCANMAR YACHTS



Builder: SCANMAR YACHTS

Year Built: 1985

Model: Sloop

Price: \$39,900 USD

Location: United States

LOA: 35' 1" (10.69mm)

Beam: 10.83

Max Draft: 5' 10" (1.78mm)

Cruise Speed: 7 Knots Kts. (8 MPH)

Max Speed: 8.2 Knots Kts. (9 MPH)

Our experienced yacht broker, Andrey Shestakov, will help you choose and buy a yacht that best suits your needs 1985 Scanmar Cockpit Sloop — SCANMAR YACHTS from our catalogue. Presently, at Shestakov Yacht Sales Inc., we have a wide variety of yachts available on our sale's list. We also work in close contact with all the big yacht manufacturers from all over the world.

If you would like to buy a yacht 1985 Scanmar Cockpit Sloop — SCANMAR YACHTS or would like help answering any questions concerning purchasing, selling or chartering a yacht, please call +1(954)274-4435

TABLE OF CONTENTS

TABLE OF CONTENTS	2
SPECIFICATIONS	3
Overview	3
Basic Information	3
Dimensions	3
Speed, Capacities and Weight	3
Accommodations	3
Hull and Deck Information	4
Engine Information	4
PHOTOS	5
CONTACTS	15
Contact details	15
Telephones	15
Office hours	15
Address	15

SPECIFICATIONS

Overview

1985 Scanmar CENTER COCKPIT SLOOP No Hurricane Damage and Ready for New Owner This is a new listing and interior pictures will be posted soon. She is in excellent condition and has been maintained by the current owner for over 25 years. A high quality Swedish-built Scanmar 35 center cockpit Sloop. Unlike most center-cockpit cruisers, the Scanmar is fast due to her powerful fractional rig, fin keel, skeg hung rudder, and low trunk cabin profile. Her interior is beautifully finished in satin varnished mahogany and her three cabin layout offers spaciousness, privacy and comfort. All reefing lines and halyards are led aft to the cockpit. A vessel of functional beauty, superior design and superior finish.

Basic Information

Category: Sloop

Model Year: 1985

Year Built: 1985

Country: United States

Dimensions

LOA: 35' 1" (10.69mm)

LWL: 27' 6" (8.38mm)

Beam: 10.83

Max Draft: 5' 10" (1.78mm)

Speed, Capacities and Weight

Cruise Speed: 7 Knots Kts. (8 MPH)

Max Speed: 8.2 Knots Kts. (9 MPH)

Water Capacity: 80 Gallons

Holding Tank: 20 Gal Gallons

Fuel Capacity: 40 Gal Gallons

Accommodations

Total Cabins: 2

Total Heads: 1

Hull and Deck Information

Hull Material: Fiberglass

Engine Information

Engines: 1

Manufacturer: Universal

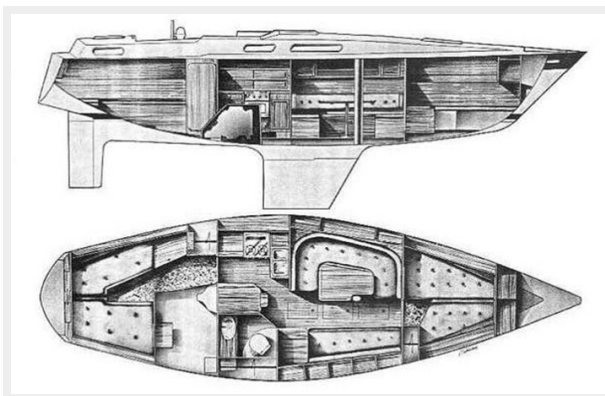
Engine Type: Inboard

Fuel Type: Diesel

PHOTOS



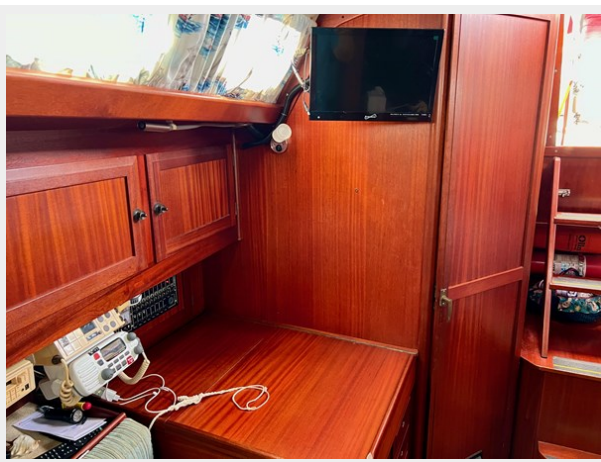




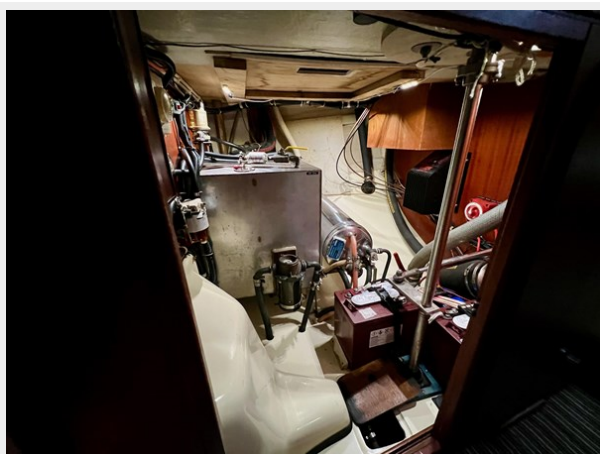
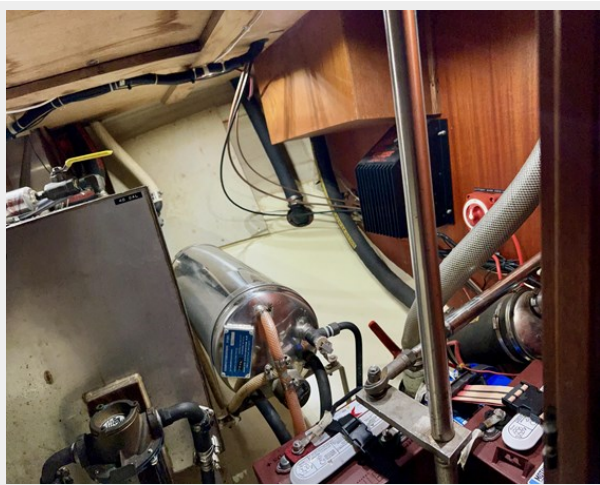














CONTACTS

Andrey Shestakov, leading yacht broker of the sales department of Shestakov Yacht Sales Inc. Shestakov Yacht Sales Inc., the official representative of the Miami/Fort Lauderdale FL headquarters.

Contact details

Email: andrey@shestakovyachtsales.com

Web: shestakovyachtsales.com/en/

Telephones

USA: +1(954)274-4435

Office hours

Monday – Saturday: **9:00 - 21:00** EDT

Sunday: **closed**

Address



Harbour Towne Marina, 850 NE 3rd St,
STE 213, Dania, FL 33004