

MANDAYACHT S07 SPIDER — MANDA YACHTS



Builder: [MANDA YACHTS](#)

Year Built: 2024

Model: Motor Yacht

Price: €3,575,000 EUR

Location: Italy

LOA: 70' 7" (21.5mm)

Beam: 20.01

Min Draft: 4' (1.2mm)

Cruise Speed: 9.72 Knots Kts. (11 MPH)

Max Speed: 12.96 Knots Kts. (15 MPH)

Our experienced yacht broker, Andrey Shestakov, will help you choose and buy a yacht that best suits your needs **MANDAYACHT S07 SPIDER — MANDA YACHTS** from **our catalogue**. Presently, at **Shestakov Yacht Sales Inc.**, we have a wide variety of yachts available on **our sale's list**. We also work in close contact with all the big **yacht manufacturers** from all over the world.

If you would like to buy a yacht **MANDAYACHT S07 SPIDER — MANDA YACHTS** or would like help answering any questions concerning purchasing, selling or chartering a yacht, please call **+1(954)274-4435**

TABLE OF CONTENTS

| | |
|---------------------------------|----|
| TABLE OF CONTENTS | 2 |
| SPECIFICATIONS | 6 |
| Overview | 6 |
| Basic Information | 6 |
| Dimensions | 6 |
| Speed, Capacities and Weight | 6 |
| Accommodations | 7 |
| Hull and Deck Information | 7 |
| Engine Information | 7 |
| PHOTOS | 8 |
| S07 SPIDER sister ship pictures | 8 |
| S07 SPIDER | 8 |
| S07 SPIDER | 8 |
| S07 SPIDER | 8 |
| S07 SPIDER | 8 |
| S07 SPIDER | 8 |
| S07 SPIDER | 9 |
| S07 SPIDER | 9 |
| S07 SPIDER | 9 |
| S07 SPIDER | 9 |
| S07 SPIDER | 10 |
| S07 SPIDER | 10 |
| S07 SPIDER | 10 |
| S07 SPIDER | 10 |
| S07 SPIDER | 10 |
| S07 SPIDER | 10 |
| S07 SPIDER | 11 |
| S07 SPIDER | 11 |

| | |
|------------|----|
| S07 SPIDER | 11 |
| S07 SPIDER | 11 |
| S07 SPIDER | 11 |
| S07 SPIDER | 11 |
| S07 SPIDER | 12 |
| S07 SPIDER | 12 |
| S07 SPIDER | 12 |
| S07 SPIDER | 12 |
| S07 SPIDER | 12 |
| S07 SPIDER | 12 |
| S07 SPIDER | 12 |
| S07 SPIDER | 12 |
| S07 SPIDER | 13 |
| S07 SPIDER | 13 |
| S07 SPIDER | 13 |
| S07 SPIDER | 13 |
| S07 SPIDER | 13 |
| S07 SPIDER | 13 |
| S07 SPIDER | 13 |
| S07 SPIDER | 14 |
| S07 SPIDER | 14 |
| S07 SPIDER | 14 |
| S07 SPIDER | 14 |
| S07 SPIDER | 14 |
| S07 SPIDER | 14 |
| S07 SPIDER | 14 |
| S07 SPIDER | 15 |
| S07 SPIDER | 15 |
| S07 SPIDER | 15 |
| S07 SPIDER | 15 |
| S07 SPIDER | 16 |
| S07 SPIDER | 16 |
| S07 SPIDER | 16 |

| | |
|------------|----|
| S07 SPIDER | 16 |
| S07 SPIDER | 16 |
| S07 SPIDER | 16 |
| S07 SPIDER | 17 |
| S07 SPIDER | 17 |
| S07 SPIDER | 17 |
| S07 SPIDER | 17 |
| S07 SPIDER | 17 |
| S07 SPIDER | 17 |
| S07 SPIDER | 17 |
| S07 SPIDER | 17 |
| S07 SPIDER | 18 |
| S07 SPIDER | 18 |
| S07 SPIDER | 18 |
| S07 SPIDER | 18 |
| S07 SPIDER | 18 |
| S07 SPIDER | 19 |
| S07 SPIDER | 19 |
| S07 SPIDER | 19 |
| S07 SPIDER | 19 |
| S07 SPIDER | 19 |
| S07 SPIDER | 20 |
| S07 SPIDER | 20 |
| S07 SPIDER | 20 |
| S07 SPIDER | 20 |
| S07 SPIDER | 20 |
| S07 SPIDER | 20 |
| S07 SPIDER | 20 |
| S07 SPIDER | 21 |
| S07 SPIDER | 21 |
| S07 SPIDER | 21 |
| S07 SPIDER | 21 |
| S07 SPIDER | 21 |
| S07 SPIDER | 22 |
| S07 SPIDER | 22 |

| | |
|-----------------|----|
| S07 SPIDER | 22 |
| S07 SPIDER | 22 |
| S07 | 22 |
| S07 | 22 |
| S07 SPIDER | 23 |
| S07 | 23 |
| S07 | 23 |
| CONTACTS | 24 |
| Contact details | 24 |
| Telephones | 24 |
| Office hours | 24 |
| Address | 24 |

SPECIFICATIONS

Overview

The Manda Yachts S07 is a distinctive yacht crafted with a unique flair by the renowned Ceccarelli Yacht Design studio. Distinguishing features include an expansive aft cockpit, providing guests with unparalleled moments in direct communion with the sea. This space is ingeniously separated from the cabin deck by a striking, electronically controlled door. -An exceptionally spacious T-Top that offers shade for up to 80% of the main deck, enabling enjoyment of the outdoor areas including the dining room and kitchen. The owner's version boasts three cabins, a living room, kitchen facilities, and a dedicated crew cabin. The yacht is scheduled to be ready by December 2024, presenting an incredible opportunity for families to use it as a personal boat or for exploring the Mediterranean with friends. At an economical speed of 10 knots, the yacht's total fuel consumption is 50 liters per hour and has an autonomy of 90 hours, approx. 1660nm.

The Manda Yachts S07 SPIDER is not just a vessel; it's an immediate invitation to luxury and performance.

Basic Information

Category: Motor Yacht

Model Year: 2024

Year Built: 2024

Country: Italy

Dimensions

LOA: 70' 7" (21.5mm)

Beam: 20.01

Min Draft: 4' (1.2mm)

Speed, Capacities and Weight

Cruise Speed: 9.72 Knots Kts. (11 MPH)

Max Speed: 12.96 Knots Kts. (15 MPH)

Gross Tonnage: 48 Pounds

Water Capacity: 2000 Gallons

Fuel Capacity: 1188.77 Gal Gallons

Accommodations

Total Cabins: 3

Sleeps: 6

Total Heads: 3

Crew Cabin: 2

Crew Berths: 2

Crew Heads: 1

Hull and Deck Information

Hull Material: Composite Infused
Vinylester

Deck Material: Teak

Hull Configuration: Deep Vee

Engine Information

Engines: 2

Manufacturer: Volvo Penta

Engine Type: Inboard

Fuel Type: Diesel

PHOTOS

S07 SPIDER sister ship pictures



S07 SPIDER



S07 SPIDER



S07 SPIDER



S07 SPIDER



S07 SPIDER



S07 SPIDER



S07 SPIDER



S07 SPIDER



S07 SPIDER



S07 SPIDER



S07 SPIDER



S07 SPIDER



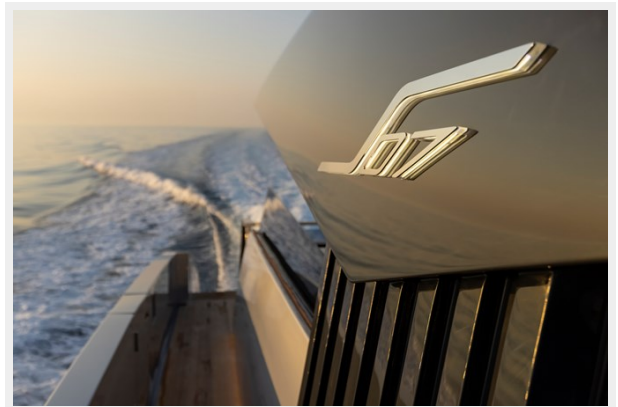
S07 SPIDER



S07 SPIDER



S07 SPIDER



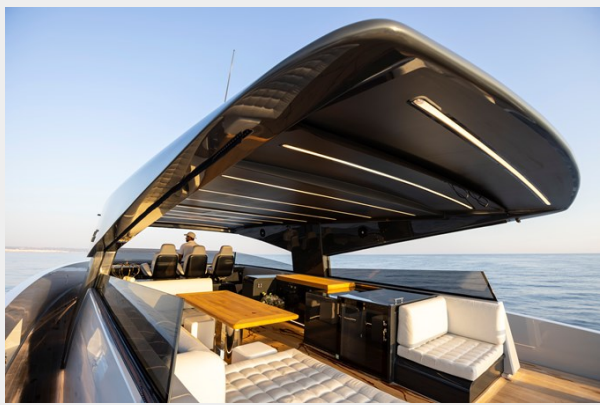
S07 SPIDER



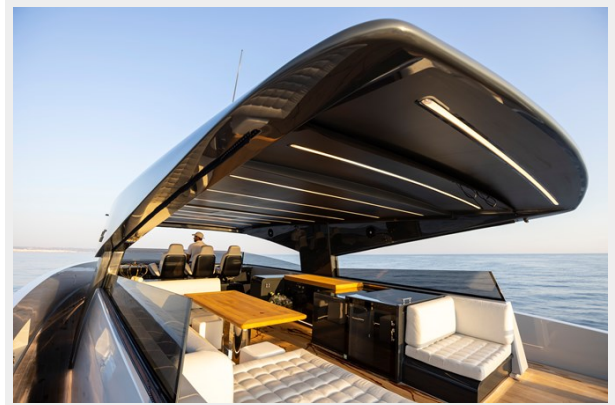
S07 SPIDER



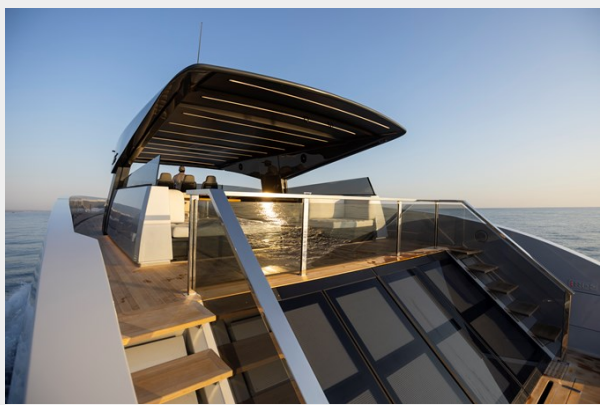
S07 SPIDER



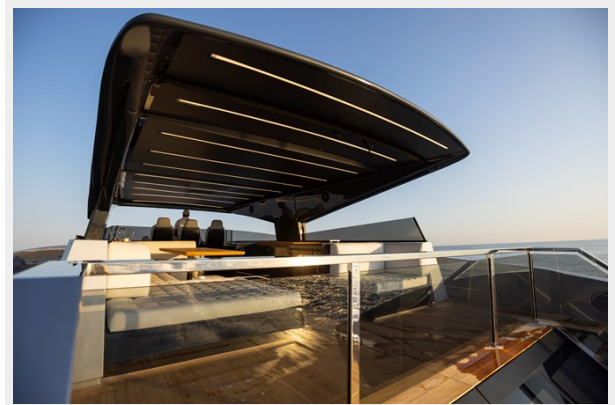
S07 SPIDER



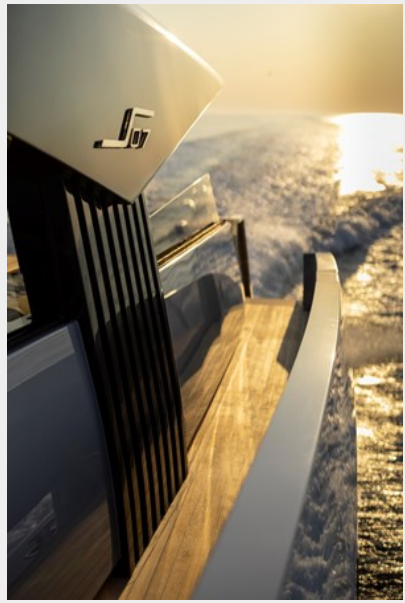
S07 SPIDER



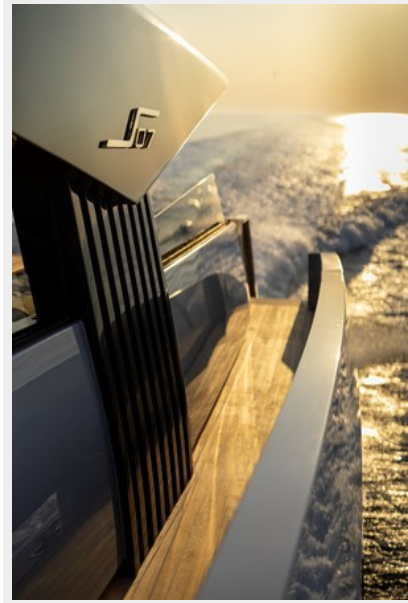
S07 SPIDER



S07 SPIDER



S07 SPIDER



S07 SPIDER



S07 SPIDER



S07 SPIDER



S07 SPIDER



S07 SPIDER



S07 SPIDER



S07 SPIDER



S07 SPIDER



S07 SPIDER



S07 SPIDER



S07 SPIDER



S07 SPIDER



S07 SPIDER



S07 SPIDER



S07 SPIDER



S07 SPIDER



S07 SPIDER



S07 SPIDER



S07 SPIDER

S07 SPIDER



S07 SPIDER



S07 SPIDER



S07 SPIDER



S07 SPIDER



S07 SPIDER



S07 SPIDER



S07 SPIDER



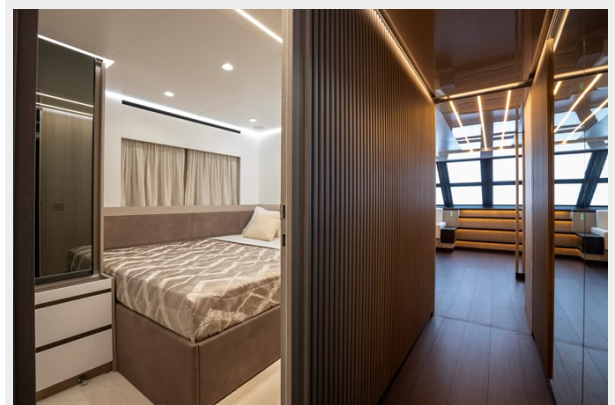
S07 SPIDER



S07 SPIDER



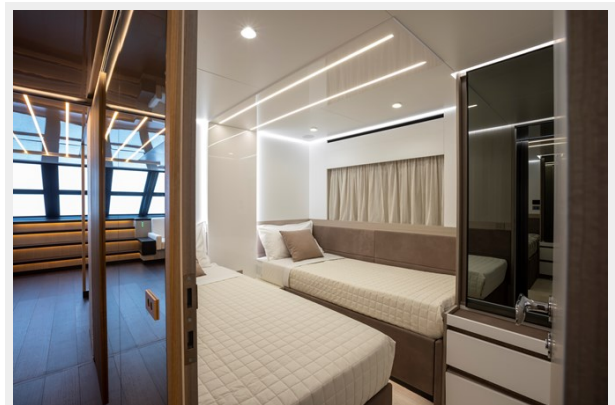
S07 SPIDER



S07 SPIDER



S07 SPIDER



S07 SPIDER



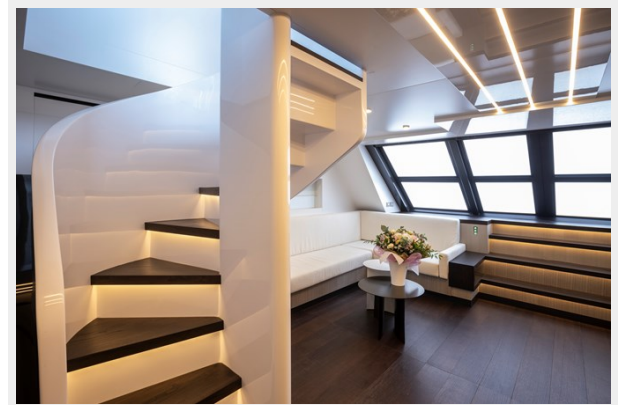
S07 SPIDER



S07 SPIDER



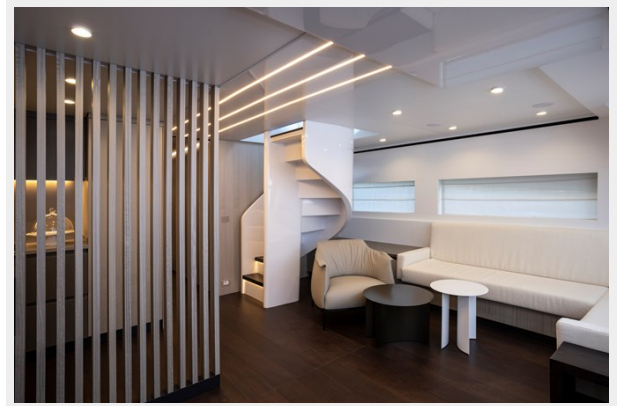
S07 SPIDER



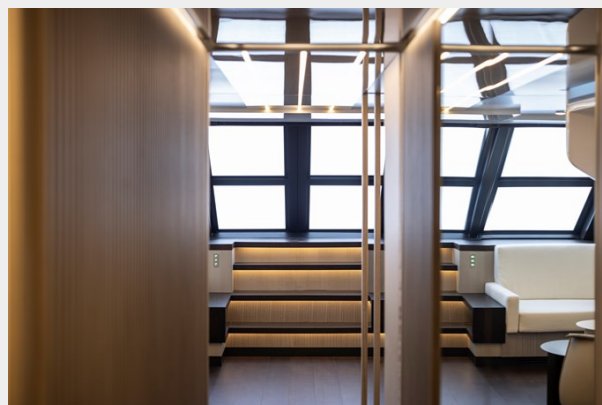
S07 SPIDER



S07 SPIDER



S07 SPIDER



S07 SPIDER



S07 SPIDER



S07 SPIDER



S07 SPIDER



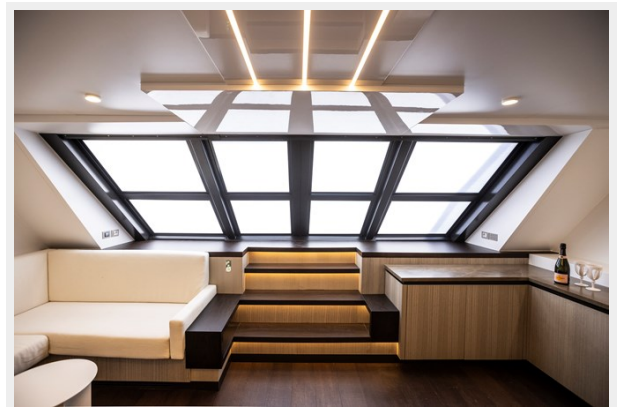
S07 SPIDER



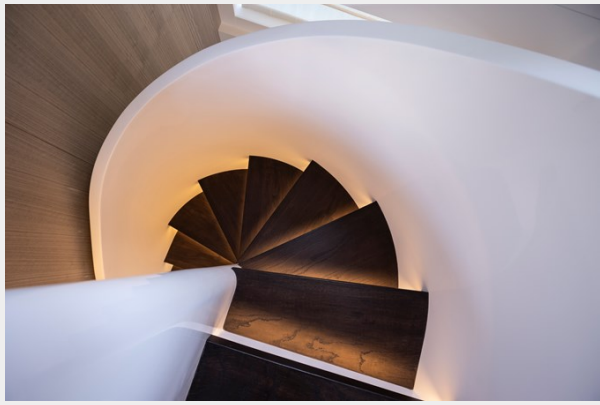
S07 SPIDER



S07 SPIDER



S07 SPIDER

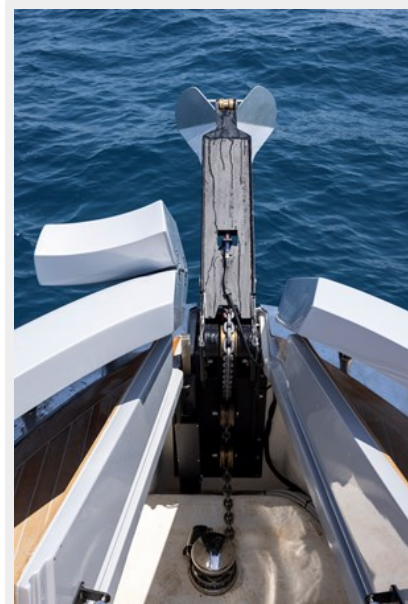


S07 SPIDER



S07 SPIDER

S07 SPIDER



S07 SPIDER



S07 SPIDER



S07 SPIDER



S07 SPIDER



S07



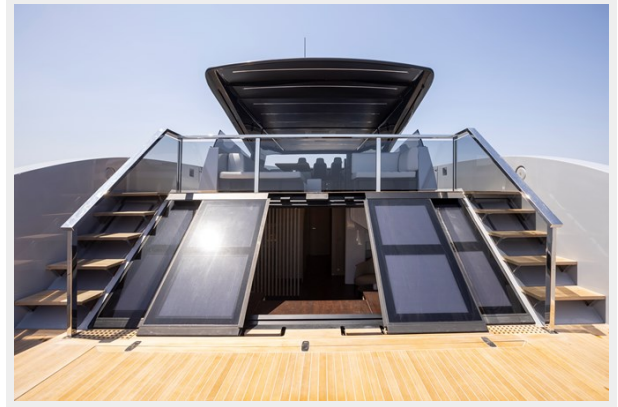
S07



S07 SPIDER



S07



S07



CONTACTS

Andrey Shestakov, leading yacht broker of the sales department of Shestakov Yacht Sales Inc. Shestakov Yacht Sales Inc., the official representative of the Miami/Fort Lauderdale FL headquarters.

Contact details

Email: **andrey@shestakovyachtsales.com**

Web: shestakovyachtsales.com/en/

Telephones

USA: **+1(954)274-4435**

Office hours

Monday – Saturday: **9:00 - 21:00** EDT

Sunday: **closed**

Address



Harbour Towne Marina, 850 NE 3rd St, STE 213, Dania, FL 33004