

W — FEADSHIP



Builder: FEADSHIP

Year Built: 2013

Model: Motor Yacht

Price: €49,950,000 EUR

Location: United States

LOA: 189' (57.6mm)

Beam: 34.61

Max Draft: 10' 8" (3.25mm)

Cruise Speed: 13.5 Knots Kts. (16 MPH)

Max Speed: 15.6 Knots Kts. (18 MPH)

Our experienced yacht broker, Andrey Shestakov, will help you choose and buy a yacht that best suits your needs **W — FEADSHIP** from our catalogue. Presently, at Shestakov Yacht Sales Inc., we have a wide variety of yachts available on our sale's list. We also work in close contact with all the big yacht manufacturers from all over the world.

If you would like to buy a yacht **W — FEADSHIP** or would like help answering any questions concerning purchasing, selling or chartering a yacht, please call **+1(954)274-4435**

TABLE OF CONTENTS

TABLE OF CONTENTS	2
SPECIFICATIONS	5
Basic Information	5
Dimensions	5
Speed, Capacities and Weight	5
Accommodations	5
Hull and Deck Information	6
Engine Information	6
PHOTOS	7
W-8	7
W-9	7
W-11 (1)	7
W-10	7
W-12	7
W-13	7
W-14	8
W-15	8
W-16	8
W-17	8
W-18	8
W-19	8
W-20	8
W-21	8
W-22	9
W-23	9
W-24	9
W-25	9
W-26	9

W-27	9
W-28	9
W-29	9
W-31	10
W-32	10
W-33	10
W-34	10
W-35	10
W-36	10
W-37	10
W-38	10
W-40	11
W-41	11
W-42	11
W-46	11
W-47	11
W-48	11
W-4	11
W-6	11
W-52	12
W-7	12
W-56	12
W-5	12
imga	12
W-58	12
W-57	12
W-1	12
W-1 (1)	13
CONTACTS	14

Contact details	14
Telephones	14
Office hours	14
Address	14

SPECIFICATIONS

Basic Information

Category: Motor Yacht

Sub Category: Motor Yacht

Model Year: 2013

Year Built: 2013

Country: United States

Dimensions

LOA: 189' (57.6mm)

LWL: 166' 5" (50.7mm)

Beam: 34.61

Max Draft: 10' 8" (3.25mm)

Speed, Capacities and Weight

Cruise Speed: 13.5 Knots Kts. (16 MPH)

Max Speed: 15.6 Knots Kts. (18 MPH)

Max Speed Range: 4500 Kts.

Gross Tonnage: 941 Pounds

Water Capacity: 25000 Gallons

Holding Tank: 1730.33 Gal Gallons

Fuel Capacity: 27473.89 Gal Gallons

Accommodations

Total Cabins: 6

Total Berths: 8

Sleeps: 12

Crew Cabin: 13

Crew Berths: 7

Hull and Deck Information

Hull Material: Steel

Deck Material: Teak

Hull Configuration: Monohull

Hull Designer: De Voogt Naval Architects

Exterior Designer: De Voogt Naval Architects

Interior Designer: Bannenberg & Rowell Design

Engine Information

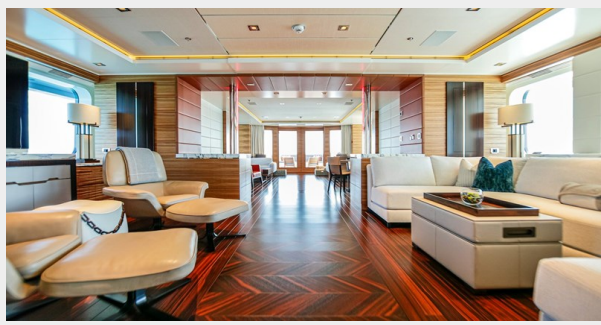
Engines: 2

Manufacturer: MTU

Fuel Type: Diesel

PHOTOS

W-8



W-9



W-10



W-11 (1)



W-12



W-13



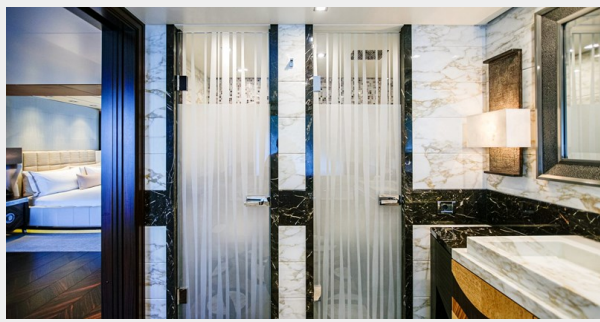
W-14



W-15



W-16



W-17



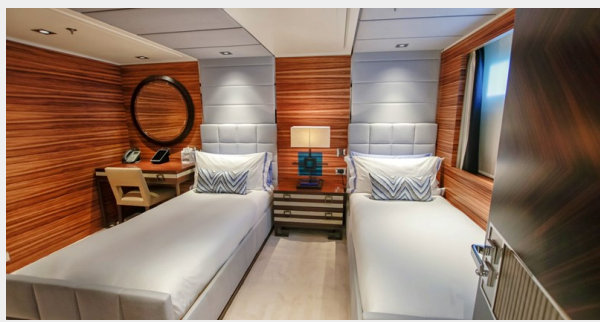
W-18



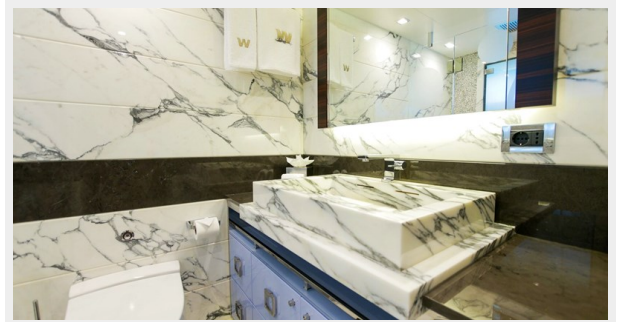
W-19



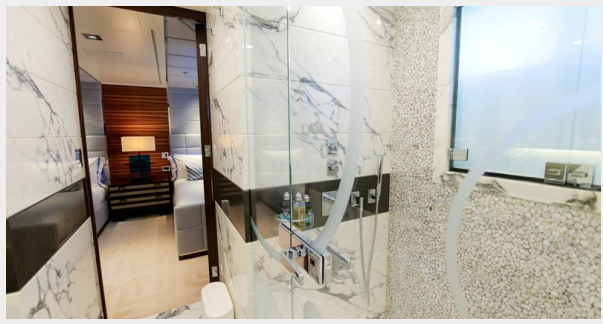
W-20



W-21



W-22



W-23



W-24



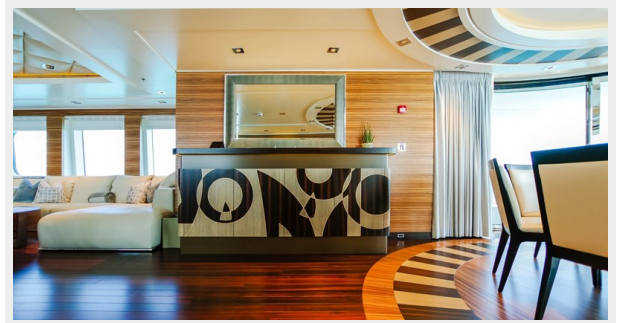
W-25



W-26



W-27



W-28



W-29



W-31



W-32



W-33



W-34



W-35



W-36



W-37



W-38



W-40



W-41



W-42



W-46



W-47



W-48



W-4



W-6



W-7



W-52



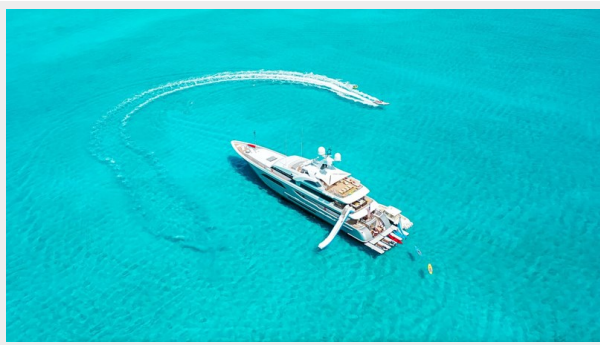
W-56



W-5



imga



W-58



W-57



W-1



W-1 (1)



CONTACTS

Andrey Shestakov, leading yacht broker of the sales department of Shestakov Yacht Sales Inc. Shestakov Yacht Sales Inc., the official representative of the Miami/Fort Lauderdale FL headquarters.

Contact details

Email: andrey@shestakovyachtsales.com

Web: shestakovyachtsales.com/en/

Telephones

USA: +1(954)274-4435

Office hours

Monday – Saturday: **9:00 - 21:00** EDT

Sunday: **closed**

Address



Harbour Towne Marina, 850 NE 3rd St,
STE 213, Dania, FL 33004