

## JUST ADD WATER — SEA RAY



**Builder:** SEA RAY

**Year Built:** 2004

**Model:** runabout

**Price:** \$34,900 USD

**Location:** United States

**LOA:** 24' (7.32mm)

**Beam:** 8.5

**Min Draft:** 2' 1" (0.63mm)

**Max Draft:** 3' 5" (1.04mm)

**Cruise Speed:** 34.76 Knots Kts. (40 MPH)

**Max Speed:** 26.07 Knots Kts. (30 MPH)

Our experienced yacht broker, Andrey Shestakov, will help you choose and buy a yacht that best suits your needs **Just Add Water — SEA RAY** from our catalogue. Presently, at Shestakov Yacht Sales Inc., we have a wide variety of yachts available on our sale's list. We also work in close contact with all the big yacht manufacturers from all over the world.

If you would like to buy a yacht **Just Add Water — SEA RAY** or would like help answering any questions concerning purchasing, selling or chartering a yacht, please call **+1(954)274-4435**

# TABLE OF CONTENTS

TABLE OF CONTENTS	2
SPECIFICATIONS	4
Overview	4
Basic Information	4
Dimensions	4
Speed, Capacities and Weight	4
Accommodations	4
Hull and Deck Information	4
Engine Information	5
PHOTOS	6
2	6
3	6
4	6
5	6
6	6
7	6
8	7
9	7
10	7
11	7
12	7
13	7
14	8
15	8
16	8
17	8
18	8
19	8

---

20	9
21	9
22	9
23	9
24	9
25	9
26	10
27	10
28	10
29	10
30	10
31	10
32	11
33	11
34	11
35	11
36	11
37	11
38	12
<b>CONTACTS</b>	<b>13</b>
Contact details	13
Telephones	13
Office hours	13
Address	13

---

# SPECIFICATIONS

---

## Overview

---

Here is a great opportunity to pick up a nice Sea Ray 240 Sundeck with very low hours (200) and all maintenance up to date. Fresh Detail , new canvas, risers and manifolds recently changed and this one is ready to go boating. Call today and be on the water this weekend!

## Basic Information

---

**Category:** runabout

**Sub Category:** Runabout

**Model Year:** 2004

**Year Built:** 2004

**Country:** United States

## Dimensions

---

**LOA:** 24' (7.32mm)

**Beam:** 8.5

**Min Draft:** 2' 1" (0.63mm)

**Max Draft:** 3' 5" (1.04mm)

## Speed, Capacities and Weight

---

**Cruise Speed:** 34.76 Knots Kts. (40 MPH)

**Max Speed:** 26.07 Knots Kts. (30 MPH)

**Water Capacity:** 20 Gallons

**Fuel Capacity:** 65 Gal Gallons

## Accommodations

---

**Total Heads:** 1

## Hull and Deck Information

---

**Hull Material:** Fiberglass

---

## Engine Information

---

**Engines:** 1

**Manufacturer:** Mercruiser

**Engine Type:** I/O

**Fuel Type:** Gas/Petrol

# PHOTOS

2



3



4



5



6



7

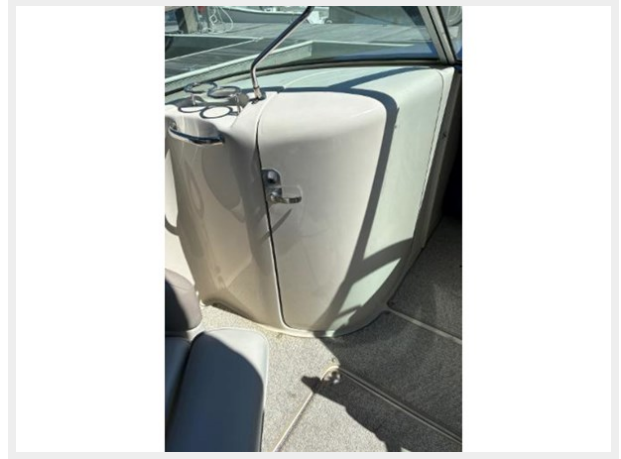




8



9



10



11



12



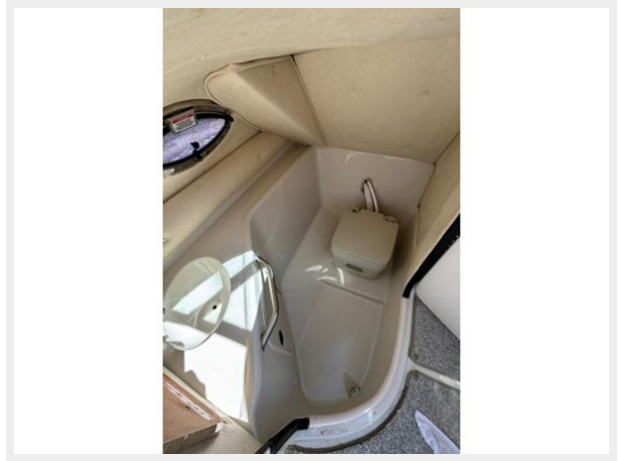
13



14



15



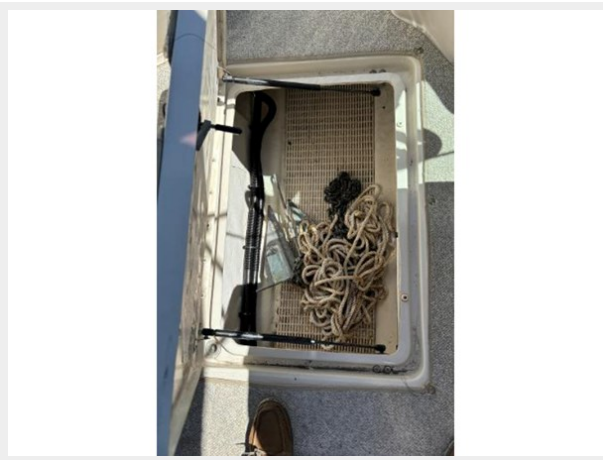
16



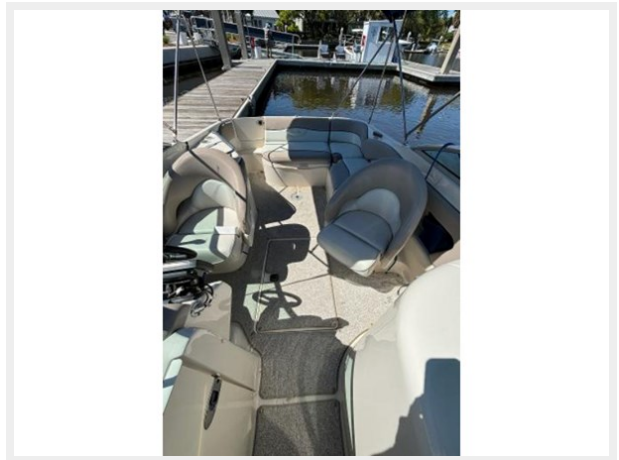
17



18



19





20



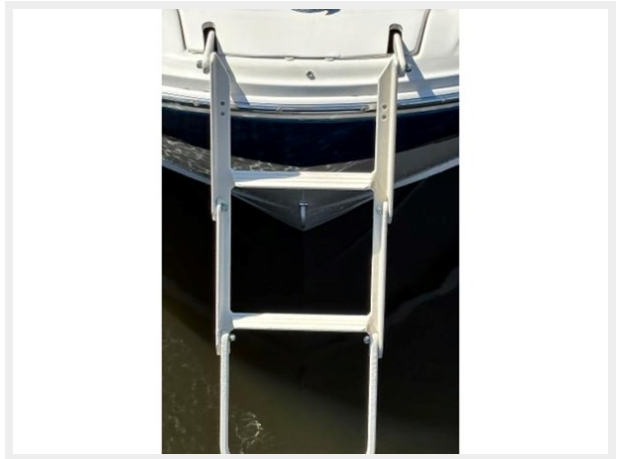
21



22



23



24



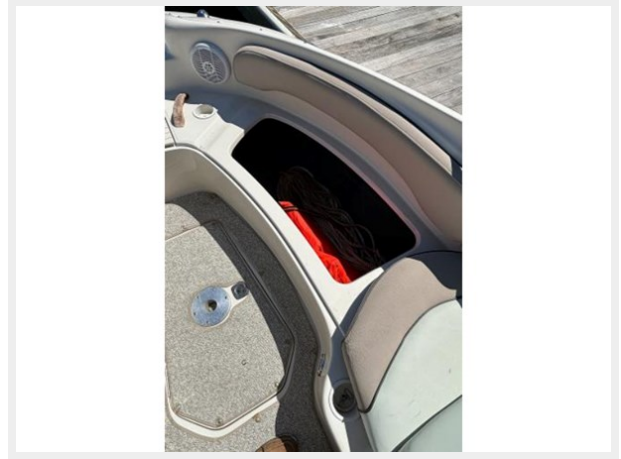
25



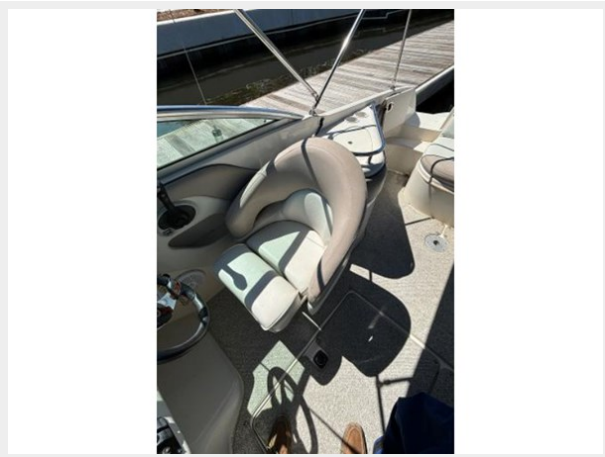
26



27



28



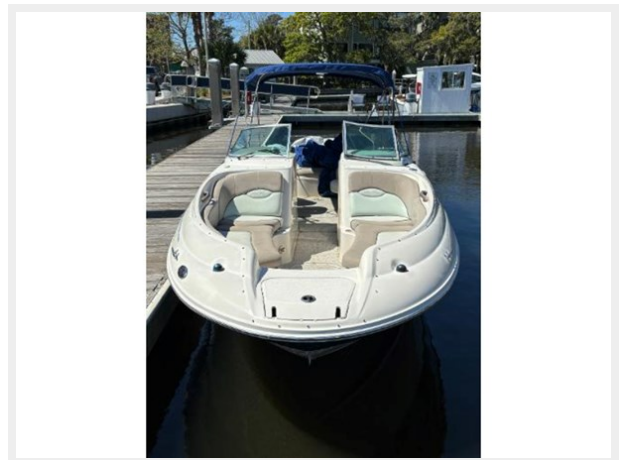
29



30



31





32



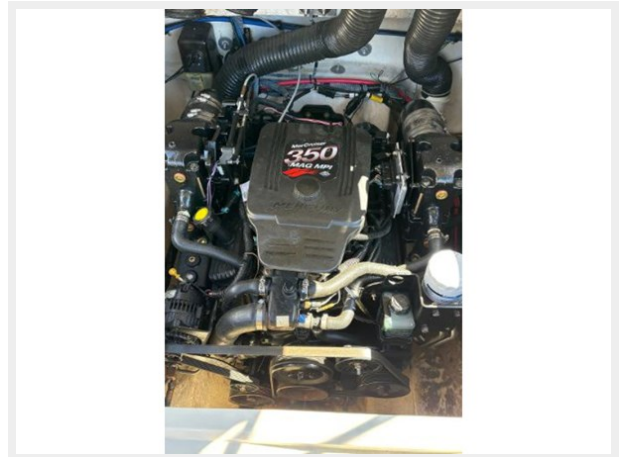
33



34



35



36



37



38



# CONTACTS

---

Andrey Shestakov, leading yacht broker of the sales department of Shestakov Yacht Sales Inc. Shestakov Yacht Sales Inc., the official representative of the Miami/Fort Lauderdale FL headquarters.

## Contact details

---

Email: [andrey@shestakovyachtsales.com](mailto:andrey@shestakovyachtsales.com)

Web: [shestakovyachtsales.com/en/](http://shestakovyachtsales.com/en/)

## Telephones

---

USA: +1(954)274-4435

## Office hours

---

Monday – Saturday: **9:00 - 21:00** EDT

Sunday: **closed**

## Address

---



Harbour Towne Marina, 850 NE 3rd St,  
STE 213, Dania, FL 33004