

LIFE IN MOTION — SILVERTON



Builder: SILVERTON

Year Built: 1997

Model: Aft Cabin

Price: \$64,900 USD

Location: United States

LOA: 41' 4" (12.6mm)

Beam: 13

Min Draft: 3' 8" (1.12mm)

Our experienced yacht broker, Andrey Shestakov, will help you choose and buy a yacht that best suits your needs **Life In Motion — SILVERTON** from our catalogue. Presently, at Shestakov Yacht Sales Inc., we have a wide variety of yachts available on our sale's list. We also work in close contact with all the big yacht manufacturers from all over the world.

If you would like to buy a yacht **Life In Motion — SILVERTON** or would like help answering any questions concerning purchasing, selling or chartering a yacht, please call **+1(954)274-4435**

TABLE OF CONTENTS

| | |
|------------------------------|----|
| TABLE OF CONTENTS | 2 |
| SPECIFICATIONS | 3 |
| Overview | 3 |
| Basic Information | 3 |
| Dimensions | 3 |
| Speed, Capacities and Weight | 3 |
| Accommodations | 3 |
| Hull and Deck Information | 4 |
| Engine Information | 4 |
| PHOTOS | 5 |
| 20230828_105532 | 7 |
| 352 ENGINE 1 | 8 |
| 20230828_105614 | 9 |
| 20230828_110347 | 9 |
| CONTACTS | 10 |
| Contact details | 10 |
| Telephones | 10 |
| Office hours | 10 |
| Address | 10 |

SPECIFICATIONS

Overview

As the pictures show, "Life in Motion" has been exceptionally well maintained. She is turn key and has been regularly updated from interior furniture to bow thruster. She makes a comfortable liveaboard and features 2 staterooms with heads. She is well worth a look.

Basic Information

Category: Aft Cabin

Sub Category: Aft Cabin

Model Year: 1997

Year Built: 1997

Country: United States

Dimensions

LOA: 41' 4" (12.6mm)

Beam: 13

Min Draft: 3' 8" (1.12mm)

Speed, Capacities and Weight

Water Capacity: 100 Gallons

Holding Tank: 68 Gal Gallons

Fuel Capacity: 286 Gal Gallons

Accommodations

Total Cabins: 2

Hull and Deck Information

Hull Material: Fiberglass

Deck Material: Fiberglass

Hull Configuration: Modified V-Hull

Engine Information

Engines: 2

Manufacturer: Crusader

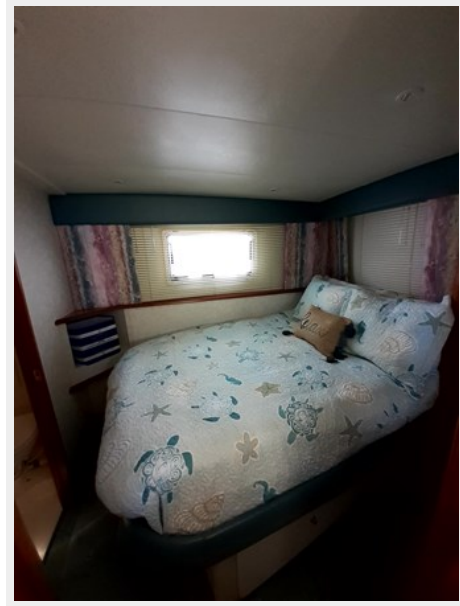
Engine Type: Inboard

Fuel Type: Gas

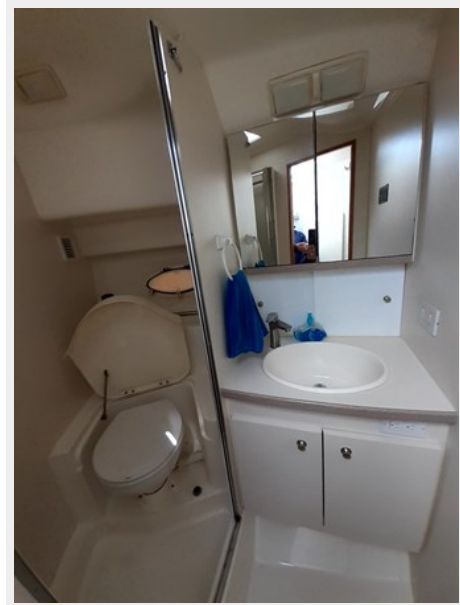
PHOTOS





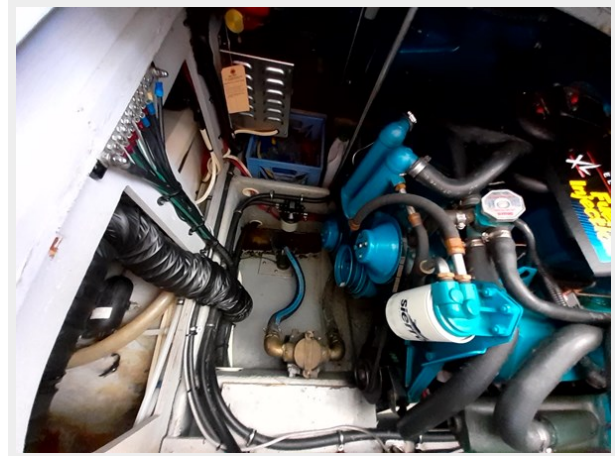


20230828_105532





352 ENGINE 1



20230828_105614



20230828_110347



CONTACTS

Andrey Shestakov, leading yacht broker of the sales department of Shestakov Yacht Sales Inc. Shestakov Yacht Sales Inc., the official representative of the Miami/Fort Lauderdale FL headquarters.

Contact details

Email: andrey@shestakovyachtsales.com

Web: shestakovyachtsales.com/en/

Telephones

USA: +1(954)274-4435

Office hours

Monday – Saturday: **9:00 - 21:00** EDT

Sunday: **closed**

Address



Harbour Towne Marina, 850 NE 3rd St,
STE 213, Dania, FL 33004