

## KAREN'S BEAU — SEA RAY



**Builder:** SEA RAY

**Year Built:** 2004

**Model:** cruiser

**Price:** \$89,500 USD

**Location:** United States

**LOA:** 34' (10.36mm)

**Beam:** 12

**Max Draft:** 3' 1" (0.94mm)

Our experienced yacht broker, Andrey Shestakov, will help you choose and buy a yacht that best suits your needs **Karen's Beau — SEA RAY** from our catalogue. Presently, at Shestakov Yacht Sales Inc., we have a wide variety of yachts available on our sale's list. We also work in close contact with all the big yacht manufacturers from all over the world.

If you would like to buy a yacht **Karen's Beau — SEA RAY** or would like help answering any questions concerning purchasing, selling or chartering a yacht, please call **+1(954)274-4435**

# TABLE OF CONTENTS

TABLE OF CONTENTS	2
SPECIFICATIONS	5
Overview	5
Basic Information	5
Dimensions	6
Speed, Capacities and Weight	6
Accommodations	6
Hull and Deck Information	6
Engine Information	6
PHOTOS	7
9329098_20240404122816548_1_XLARGE	7
9329098_20240404123556749_1_XLARGE	7
9329098_20240404123610632_1_XLARGE	7
9329098_20240404122638237_1_XLARGE	7
9329098_20240404122642352_1_XLARGE	7
9329098_20240404123605836_1_XLARGE	7
9329098_20240404123600806_1_XLARGE	8
9329098_20240404122646112_1_XLARGE	8
9329098_20240404122650207_1_XLARGE	8
9329098_20240404122654457_1_XLARGE	8
9329098_20240404122658287_1_XLARGE	8
9329098_20240404122702271_1_XLARGE	8
9329098_20240404122707327_1_XLARGE	9
9329098_20240404122711227_1_XLARGE	9
9329098_20240404122715245_1_XLARGE	9
9329098_20240404122719502_1_XLARGE	9
9329098_20240404122723525_1_XLARGE	9
9329098_20240404122727291_1_XLARGE	9

---

9329098_20240404122731448_1_XLARGE	10
9329098_20240404122735254_1_XLARGE	10
9329098_20240404122739450_1_XLARGE	10
9329098_20240404122743471_1_XLARGE	10
9329098_20240404122748450_1_XLARGE	10
9329098_20240404122752280_1_XLARGE	10
9329098_20240404122756373_1_XLARGE	11
9329098_20240404122800376_1_XLARGE	11
9329098_20240404122804910_1_XLARGE	11
9329098_20240404122809366_1_XLARGE	11
9329098_20240404122813333_1_XLARGE	11
9329098_20240404122819421_1_XLARGE	11
9329098_20240404122823533_1_XLARGE	12
9329098_20240404122827344_1_XLARGE	12
9329098_20240404122834651_1_XLARGE	12
9329098_20240404122839519_1_XLARGE	12
9329098_20240404122844857_1_XLARGE	12
9329098_20240404122853529_1_XLARGE	12
9329098_20240404122857362_1_XLARGE	13
9329098_20240404122901414_1_XLARGE	13
9329098_20240404122909753_1_XLARGE	13
9329098_20240404122917383_1_XLARGE	13
9329098_20240404122925432_1_XLARGE	13
9329098_20240404122937516_1_XLARGE	13
9329098_20240404122949788_1_XLARGE	14
9329098_20240404122958513_1_XLARGE	14
9329098_20240404123007770_1_XLARGE	14
9329098_20240404123015517_1_XLARGE	14
9329098_20240404123024898_1_XLARGE	14

---

---

9329098_20240404123032543_1_XLARGE	14
9329098_20240404123040773_1_XLARGE	15
9329098_20240404123049774_1_XLARGE	15
9329098_20240404123058833_1_XLARGE	15
9329098_20240404123107900_1_XLARGE	15
9329098_20240404123118707_1_XLARGE	15
9329098_20240404123126979_1_XLARGE	15
9329098_20240404123135973_1_XLARGE	16
9329098_20240404123131797_1_XLARGE	16
9329098_20240404123146030_1_XLARGE	16
9329098_20240404123156124_1_XLARGE	16
9329098_20240404123205144_1_XLARGE	17
9329098_20240404123213971_1_XLARGE	17
9329098_20240404123223196_1_XLARGE	17
9329098_20240404123232907_1_XLARGE	17
9329098_20240404123249231_1_XLARGE	18
9329098_20240404123238223_1_XLARGE	18
9329098_20240404123254062_1_XLARGE	18
9329098_20240404123258866_1_XLARGE	18
9329098_20240404123304184_1_XLARGE	18
9329098_20240404123309088_1_XLARGE	18
9329098_20240404123313972_1_XLARGE	19
9329098_20240404123317846_1_XLARGE	19
9329098_20240404123320784_1_XLARGE	19
CONTACTS	20
Contact details	20
Telephones	20
Office hours	20
Address	20

---

---

# SPECIFICATIONS

---

## Overview

---

2004 Sea Ray 340 Sundancer

**A well maintained two owner boat in excellent condition, with under 650hrs.**

This example of the popular Sea Ray 340, shows like new. The hull is spotless, enclosure & bimini recently replaced. The deck carpet was recently replaced, cockpit cushions are in excellent condition without any sun damage. **Autopilot**, Depth sounder, Color Garmin GPS with Radar, 45 Gallon Pressure hot & cold-water system. Powered with twin reliable 370 hp Mercruiser Horizon 8.1, (635hrs and 641 hrs Respectively) with 225 gallons of fuel, so you can cruise without worries for fuel stops. This boat has just completed a bottom job, both engines & generator servicing. Recent battery replacement. An **electric windlass** is included and works.

Interior height is a roomy 6' 4", and is in excellent condition. This boat includes a **5kw Kohler generator with 223hrs on it**, to keep the A/C running while at anchor. The single air conditioner was just serviced as well. A head with a 28-gallon holding tank and deck fitting pump out. Service records available. The spacious galley includes a refrigerator, microwave, and 2 burner electric stove, so you can prepare meals for friends and family while on board. The forward stateroom offers a queen-size centerline berth, while the mid-cabin provides ample sleeping space for guests. Plenty of storage space as well. The head features a shower, sink, and Vacuflush toilet.

The layout is incredibly efficient with excellent use of space, ample headroom everywhere and truly feels like a much larger boat. The performance and handling are excellent regardless of conditions. So, if you are looking for a great boat with a new boat feel, this is an excellent boat to enjoy right away.

---

## Basic Information

---

**Category:** cruiser

**Sub Category:** Express

**Model Year:** 2004

**Year Built:** 2004

**Country:** United States

---

## Dimensions

---

**LOA:** 34' (10.36mm)

**Beam:** 12

**Max Draft:** 3' 1" (0.94mm)

---

## Speed, Capacities and Weight

---

**Water Capacity:** 45 Gallons

**Holding Tank:** 28 Gal Gallons

**Fuel Capacity:** 225 Gal Gallons

---

## Accommodations

---

**Total Cabins:** 2

---

## Hull and Deck Information

---

**Hull Material:** Fiberglass

---

## Engine Information

---

**Engines:** 2

**Manufacturer:** Mercruiser

**Engine Type:** Inboard

**Fuel Type:** Gas/Petrol



# PHOTOS

9329098\_20240404122816548\_1\_XLARGE



9329098\_20240404123556749\_1\_XLARGE



9329098\_20240404123610632\_1\_XLARGE



9329098\_20240404122638237\_1\_XLARGE



9329098\_20240404122642352\_1\_XLARGE



9329098\_20240404123605836\_1\_XLARGE



9329098\_20240404123600806\_1\_XLARGE



9329098\_20240404122646112\_1\_XLARGE



9329098\_20240404122650207\_1\_XLARGE



9329098\_20240404122654457\_1\_XLARGE



9329098\_20240404122658287\_1\_XLARGE



9329098\_20240404122702271\_1\_XLARGE





9329098\_20240404122707327\_1\_XLARGE



9329098\_20240404122711227\_1\_XLARGE



9329098\_20240404122715245\_1\_XLARGE



9329098\_20240404122719502\_1\_XLARGE



9329098\_20240404122723525\_1\_XLARGE



9329098\_20240404122727291\_1\_XLARGE



9329098\_20240404122731448\_1\_XLARGE



9329098\_20240404122735254\_1\_XLARGE



9329098\_20240404122739450\_1\_XLARGE



9329098\_20240404122743471\_1\_XLARGE



9329098\_20240404122748450\_1\_XLARGE



9329098\_20240404122752280\_1\_XLARGE





9329098\_20240404122756373\_1\_XLARGE



9329098\_20240404122800376\_1\_XLARGE



9329098\_20240404122804910\_1\_XLARGE



9329098\_20240404122809366\_1\_XLARGE



9329098\_20240404122813333\_1\_XLARGE



9329098\_20240404122819421\_1\_XLARGE



9329098\_20240404122823533\_1\_XLARGE



9329098\_20240404122827344\_1\_XLARGE



9329098\_20240404122834651\_1\_XLARGE



9329098\_20240404122839519\_1\_XLARGE



9329098\_20240404122844857\_1\_XLARGE



9329098\_20240404122853529\_1\_XLARGE





9329098\_20240404122857362\_1\_XLARGE



9329098\_20240404122901414\_1\_XLARGE



9329098\_20240404122909753\_1\_XLARGE



9329098\_20240404122917383\_1\_XLARGE



9329098\_20240404122925432\_1\_XLARGE



9329098\_20240404122937516\_1\_XLARGE





9329098\_20240404122949788\_1\_XLARGE



9329098\_20240404122958513\_1\_XLARGE



9329098\_20240404123007770\_1\_XLARGE



9329098\_20240404123015517\_1\_XLARGE



9329098\_20240404123024898\_1\_XLARGE



9329098\_20240404123032543\_1\_XLARGE



9329098\_20240404123040773\_1\_XLARGE



9329098\_20240404123049774\_1\_XLARGE



9329098\_20240404123058833\_1\_XLARGE



9329098\_20240404123107900\_1\_XLARGE



9329098\_20240404123118707\_1\_XLARGE



9329098\_20240404123126979\_1\_XLARGE



9329098\_20240404123135973\_1\_XLARGE

9329098\_20240404123131797\_1\_XLARGE



9329098\_20240404123146030\_1\_XLARGE

9329098\_20240404123156124\_1\_XLARGE





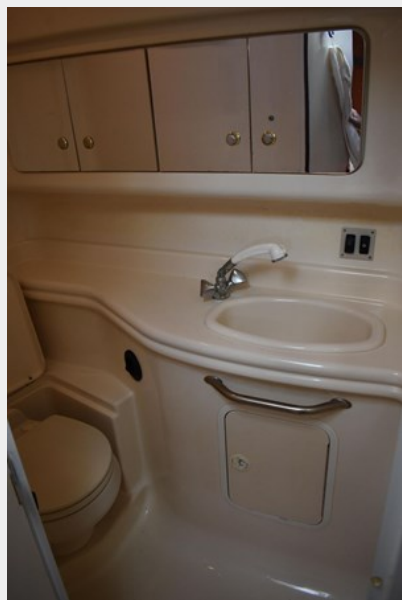
9329098\_20240404123205144\_1\_XLARGE



9329098\_20240404123213971\_1\_XLARGE



9329098\_20240404123223196\_1\_XLARGE

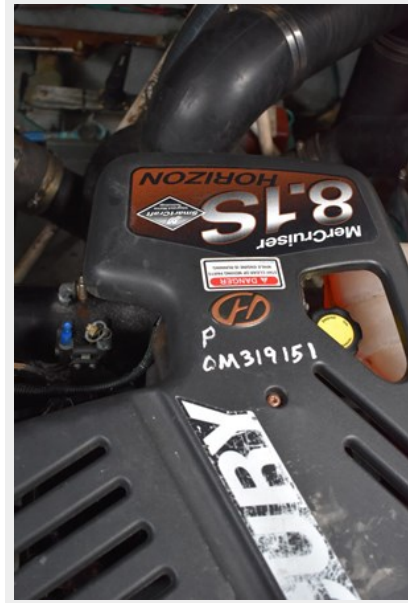


9329098\_20240404123232907\_1\_XLARGE



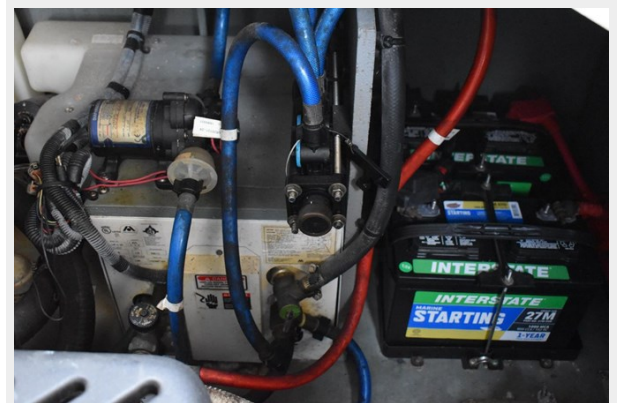
9329098\_20240404123249231\_1\_XLARGE

9329098\_20240404123238223\_1\_XLARGE



9329098\_20240404123254062\_1\_XLARGE

9329098\_20240404123258866\_1\_XLARGE



9329098\_20240404123304184\_1\_XLARGE

9329098\_20240404123309088\_1\_XLARGE



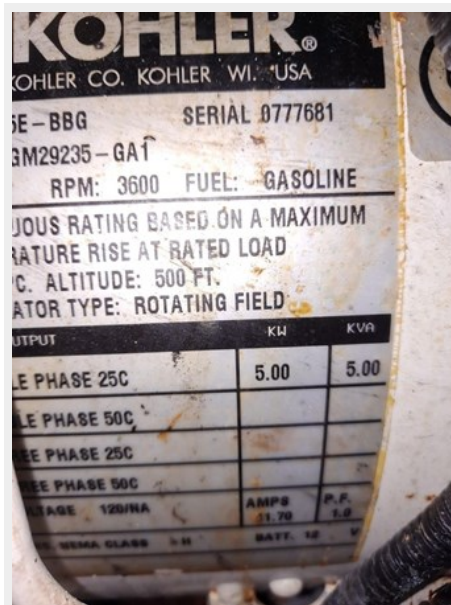


9329098\_20240404123313972\_1\_XLARGE

9329098\_20240404123317846\_1\_XLARGE



9329098\_20240404123320784\_1\_XLARGE



# CONTACTS

---

Andrey Shestakov, leading yacht broker of the sales department of Shestakov Yacht Sales Inc. Shestakov Yacht Sales Inc., the official representative of the Miami/Fort Lauderdale FL headquarters.

## Contact details

---

Email: [andrey@shestakovyachtsales.com](mailto:andrey@shestakovyachtsales.com)

Web: [shestakovyachtsales.com/en/](http://shestakovyachtsales.com/en/)

## Telephones

---

USA: +1(954)274-4435

## Office hours

---

Monday – Saturday: **9:00 - 21:00** EDT

Sunday: **closed**

## Address

---



Harbour Towne Marina, 850 NE 3rd St,  
STE 213, Dania, FL 33004