

MARBELLA — RIVIERA



Builder: RIVIERA

Year Built: 2021

Model: Sport Yacht

Price: \$1,600,000 USD

Location: United States

LOA: 57' 2" (17.42mm)

Beam: 16

Max Draft: 4' 9" (1.45mm)

Cruise Speed: 26 Knots Kts. (30 MPH)

Max Speed: 35 Knots Kts. (40 MPH)

Our experienced yacht broker, Andrey Shestakov, will help you choose and buy a yacht that best suits your needs **Marbella — RIVIERA** from our catalogue. Presently, at Shestakov Yacht Sales Inc., we have a wide variety of yachts available on our sale's list. We also work in close contact with all the big yacht manufacturers from all over the world.

If you would like to buy a yacht **Marbella — RIVIERA** or would like help answering any questions concerning purchasing, selling or chartering a yacht, please call **+1(954)274-4435**

TABLE OF CONTENTS

TABLE OF CONTENTS	2
SPECIFICATIONS	4
Overview	4
Basic Information	7
Dimensions	8
Speed, Capacities and Weight	8
Accommodations	8
Hull and Deck Information	8
Engine Information	8
PHOTOS	9
profile top	9
cockpit	9
cockpit in	9
cockpit fwd	9
Untitled 17	9
cabin fwd	9
cabin aft	10
cabin barstool	10
helm	10
Untitled 34	10
Untitled 27	10
Untitled 26	10
cabin stairs	11
stateroom-main	11
stateroom-main-fwd	11
head-vip	11
stateroom-vip	11
stateroom-vip fwd	11

head-main	12
stateroom-twin	12
Untitled 48	12
Untitled 47	12
IMG_0258	12
Untitled 49	12
IMG_0250	13
sunroof	13
Untitled 10	13
swimstep	13
IMG_0292	13
0-SPECS	13
CONTACTS	14
Contact details	14
Telephones	14
Office hours	14
Address	14

SPECIFICATIONS

Overview

*** REDUCED \$200K TO SELL ***

2021 RIVIERA 5400 SPORT YACHT 'PLATINUM EDITION'

Immaculate LLC-Owned Yacht + Transferrable Slip at Newport Resort

A unique opportunity to purchase a pristine 54' yacht with a transferable slip option at the Newport Dunes Waterfront Resort & Marina which offers parking, security, special events, water sports, and more. Highlights of this package include:

- Boat and Slip Package Offered at \$1,600,000 (reduced \$200k to sell)
- Immaculate 2021 Riviera 5400 Sport Yacht 'Platinum Edition'
- Single-asset LLC owned
- Professionally maintained and managed; original owner
- 3 staterooms | 2 heads | full-beam master
- Twin Volvo IPS 950 engines (each 750 HP w/ 90 hours)
- Open and bright layout with an abundance of windows and natural light
- Aft galley window raises to integrate indoor/outdoor entertaining spaces
- Seakeeper Gyro Stabilizer for added stability
- Two IPS Joysticks for effortless maneuverability
- Volvo's Dynamic Positioning System for maintaining position in any conditions
- Transferable 5-year Factory Warranty

Check out all the features and upgrades:

- Dual Garmin 17" *Volvo Glass Bridge 8617's*.
- Seakeeper 9 Gyro Stabilizer
- Dynamic Positioning System
- Joystick
- Aft cockpit joystick station
- KVH SAT TV6
- Hardtop with a large sunroof
- Aft cockpit retractable sunroof
- Hi/Lo Cockpit table
- BBQ Grill & Griddle with extractor fan
- Teak in Aft Cockpit, Steps & Swimstep
- Tropical A/C package
- Salon Wood Flooring
- Hi/Lo Salon dining table

- Icemaker
- Wine Cooler
- Dishwasher
- Washer/Dryer
- Inverter
- AIS Receiver
- Sound System 5.1 with JL speakers
- Underwater Lights
- Garage
- Hydraulic Swim step and more ...

Aft Cockpit

- L-Shaped lounge
- Teak Flooring
- Dual Electric BBQ Grill & Griddle with Extractor fan
- Wet Bar
- Refrigerator
- Ice Maker
- Hi/Lo Cockpit Table
- Port side Joystick Control
- Fusion Stereo system
- Upgraded JL Audio speaker with JL Audio 6-channel amp
- Garage for Tender
- Hydraulic swimstep
- Aft facing awning window
- Aqualuma Gen 4 Series underwater lights
- Freshwater & Saltwater washdown

Foredeck

- Double size adjustable sunpad
- Cup holders
- Two stereo speakers
- Deep foredeck Lockers
- Muir Electric windlass
- Stainless Steel anchor
- Hella Easy Fit blue lighting

Saloon & Up-Galley

- Corian benchtop waterfall
- Walnut interior throughout
- Dual refrigerators
- Wine cooler

- Miele Microwave
- Miele Dishwasher
- Drinking water purifier w/outlet
- Two Burner cooktop with extractor fan
- Galleyware Package
- Electric Hi/Lo Dining table
- Electric side roller blinds
- Convertible dinette to daybed
- C-Zone display
- Tropical A/C
- Breakfast bar with seating
- Hi/Lo Samsung 43" Flat screen TV
- Fusion Stereo System
- 5-speaker surround sound
- Sliding windows Port & Starboard

Helm Station

- Center Helm station
- Twin 17" Garmin *Volvo Glass Bridge 8617's*. Multi-Function touchscreen displays
GPS/Radar
- Garmin Depthsounder/Transducer
- C-Zone display
- Seakeeper 9 Gyro screen
- Volvo Glass cockpit navigation & monitoring system
- Volvo Joystick control
- Volvo AutoPilot
- VHF Radio
- Electric sunroof with sunshade

Master En-Suite Stateroom

- Full Beam mid-ship Master with King Berth
- Chaise lounge to starboard
- Ample storage and twin hanging lockers
- Samsung Flat screen TV
- Opening portholes
- Roller blinds
- Safe

Master En-Suite Head

- Frameless glass shower stall
- Tile floors
- Solid surface bench tops

- Opening porthole with sensor

VIP En-Suite Stateroom

- Forward centerline Queen berth
- Opening portholes
- Twin Hanging Lockers
- Ample storage
- Flat screen TV
- Roller blinds

VIP/Day Head

- Full size shower
- Tile floors
- Corian countertops
- Opening portholes

Guest Stateroom

- Hi/Lo twin berths
- 24" Flat screen TV
- Fusion Apollo Stereo system
- Hanging locker
- Storage drawers

Electronics

- Fusion Stereo System
- KVH TV6 Tri-Americas
- 5 speaker surround sound in Saloon
- Samsung flatscreen TV in Saloon & Master Stateroom
- Cummins Generator
- Seakeeper 9 Gyro

Basic Information

Category: Sport Yacht

Model Year: 2021

Year Built: 2021

Country: United States

Dimensions

LOA: 57' 2" (17.42mm)

Beam: 16

Max Draft: 4' 9" (1.45mm)

Speed, Capacities and Weight

Cruise Speed: 26 Knots Kts. (30 MPH)

Cruise Speed Range: 400

Max Speed: 35 Knots Kts. (40 MPH)

Max Speed Range: 350 Kts.

Gross Tonnage: 66.4 Pounds

Water Capacity: 211 Gallons

Holding Tank: 106 Gal Gallons

Fuel Capacity: 793 Gal Gallons

Accommodations

Total Cabins: 3

Total Berths: 6

Sleeps: 6

Total Heads: 2

Hull and Deck Information

Hull Material: Fiberglass

Deck Material: Teak

Hull Configuration: Deep Vee

Hull Designer: Riviera

Interior Designer: Riviera

Engine Information

Engines: 2

Manufacturer: Volvo Penta

Fuel Type: Diesel

PHOTOS

profile top



cockpit



cockpit in



cockpit fwd



Untitled 17



cabin fwd



cabin aft



cabin barstool



helm



Untitled 34



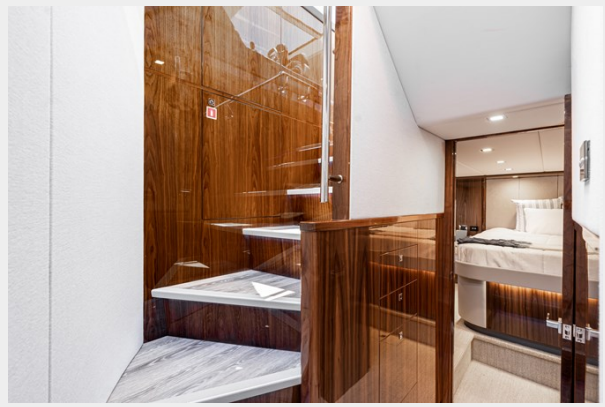
Untitled 26



Untitled 27



cabin stairs



stateroom-main



stateroom-main-fwd



head-vip



stateroom-vip



stateroom-vip fwd



head-main



stateroom-twin



Untitled 48



Untitled 47



Untitled 49



IMG_0258



IMG_0250



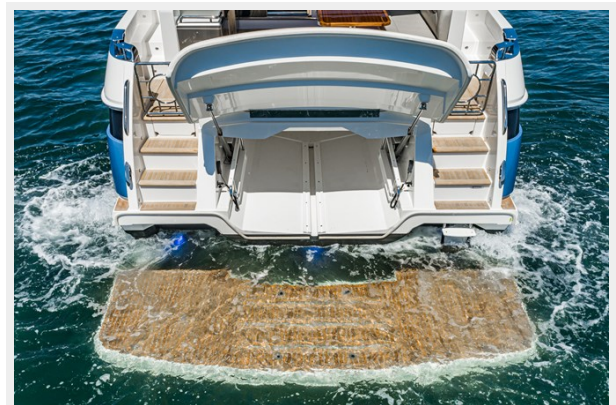
sunroof



Untitled 10



swimstep



IMG_0292



0-SPECS

SPECIFICATIONS					
Length Overall <small>(inc. swim platform and bow sprit)</small>	17.46 m	57' 3"	Water Capacity ***	800 L	211 US gal
Hull Length <small>(L_h to ISO8666)</small>	15.93 m	52' 3"	Holding Tank Capacity ***	400 L	106 US gal
Beam <small>(inc. gunwale)</small>	4.88 m	16'	Sleeping Capacity	6 persons	
Maximum Draft <small>(inc. prop)</small>	1.38 m	4' 9"	Cockpit Area	9.87 m ²	106.2 ft ²
Dry Weight <small>(approx.)**</small>	24,752 kg	54,596 lb	Bridge Clearance	5.05 m	16' 7"
Fuel Capacity ***	3,000 L	793 US gal	Standard Engine <small>Volvo Penta D11 IPS 950 (2x)</small>	533 kW	725 hp ea

* Length of the hull (L_h) to ISO8666: Includes all structural and integral parts (i.e. the moulded length of the hull). It excludes parts that can be removed in a non-destructive manner without affecting the structural integrity of the craft, (eg. pulpits, outdrives, driving platforms, rubbing strakes).
 ** Dry weight represents the estimated minimum weight of a yacht with standard engines and options, no fuel or water on board, no equipment or provisions and no personnel. The stated dry weight may be exceeded.
 *** Denotes net tank capacity. For useable capacity do not rely on more than 90% of tank capacity. Actual capacity will vary according to yacht trim, top and sea state. Speeds are subject to normal weather conditions, fuel and/or water levels, passengers and equipment loads.

CONTACTS

Andrey Shestakov, leading yacht broker of the sales department of Shestakov Yacht Sales Inc. Shestakov Yacht Sales Inc., the official representative of the Miami/Fort Lauderdale FL headquarters.

Contact details

Email: andrey@shestakovyachtsales.com

Web: shestakovyachtsales.com/en/

Telephones

USA: +1(954)274-4435

Office hours

Monday – Saturday: **9:00 - 21:00** EDT

Sunday: **closed**

Address



Harbour Towne Marina, 850 NE 3rd St,
STE 213, Dania, FL 33004