

MARBELLA — RIVIERA



Судостроитель: RIVIERA

Год постройки: 2021

Модель: Sport Yacht

Цена: \$1,600,000 USD

Местонахождение: United States

Длина общая: 57' 2" (17.42mm)

Ширина: 16

Макс. осадка: 4' 9" (1.45mm)

Крейс. скорость: 26 Knots Kts. (30 MPH)

Макс. скорость: 35 Knots Kts. (40 MPH)

Купить **Marbella — RIVIERA** а также выбрать подходящую вам яхту из нашего каталога яхт вам поможет опытный яхтенный брокер Андрей Шестаков. На сегодняшний день компания **Shestakov Yacht Sales Inc.** имеет большое количество яхт в собственном списке продаж, а также тесно сотрудничает со всеми крупными яхтенными производителями по всему миру.

Для того чтобы купить яхту **Marbella — RIVIERA** а также проконсультироваться по любому вопросу связанному с покупкой, продажей, чартером яхт позвоните по телефону **+7(918)465-66-44**.

ОГЛАВЛЕНИЕ

ОГЛАВЛЕНИЕ	2
ХАРАКТЕРИСТИКИ	4
Обзор	4
Основная информация	7
Размеры	8
Скорость, вместимость и масса	8
Размещение	8
Корпус и палуба	8
Информация о двигателе	8
ФОТОГРАФИИ	9
profile top	9
cockpit	9
cockpit in	9
cockpit fwd	9
Untitled 17	9
cabin fwd	9
cabin aft	10
cabin barstool	10
helm	10
Untitled 34	10
Untitled 27	10
Untitled 26	10
cabin stairs	11
stateroom-main	11
stateroom-main-fwd	11
head-vip	11
stateroom-vip	11
stateroom-vip fwd	11

head-main	12
stateroom-twin	12
Untitled 48	12
Untitled 47	12
IMG_0258	12
Untitled 49	12
IMG_0250	13
sunroof	13
Untitled 10	13
swimstep	13
IMG_0292	13
0-SPECS	13
КОНТАКТЫ	14
Контактная информация	14
Телефоны	14
Время работы	14
Адрес	14

ХАРАКТЕРИСТИКИ

Обзор

*** REDUCED \$200K TO SELL ***

2021 RIVIERA 5400 SPORT YACHT 'PLATINUM EDITION'

Immaculate LLC-Owned Yacht + Transferrable Slip at Newport Resort

A unique opportunity to purchase a pristine 54' yacht with a transferable slip option at the Newport Dunes Waterfront Resort & Marina which offers parking, security, special events, water sports, and more. Highlights of this package include:

- Boat and Slip Package Offered at \$1,600,000 (reduced \$200k to sell)
- Immaculate 2021 Riviera 5400 Sport Yacht 'Platinum Edition'
- Single-asset LLC owned
- Professionally maintained and managed; original owner
- 3 staterooms | 2 heads | full-beam master
- Twin Volvo IPS 950 engines (each 750 HP w/ 90 hours)
- Open and bright layout with an abundance of windows and natural light
- Aft galley window raises to integrate indoor/outdoor entertaining spaces
- Seakeeper Gyro Stabilizer for added stability
- Two IPS Joysticks for effortless maneuverability
- Volvo's Dynamic Positioning System for maintaining position in any conditions
- Transferable 5-year Factory Warranty

Check out all the features and upgrades:

- Dual Garmin 17" *Volvo Glass Bridge 8617's*.
- Seakeeper 9 Gyro Stabilizer
- Dynamic Positioning System
- Joystick
- Aft cockpit joystick station
- KVH SAT TV6
- Hardtop with a large sunroof
- Aft cockpit retractable sunroof
- Hi/Lo Cockpit table
- BBQ Grill & Griddle with extractor fan
- Teak in Aft Cockpit, Steps & Swimstep
- Tropical A/C package
- Salon Wood Flooring
- Hi/Lo Salon dining table

- Icemaker
- Wine Cooler
- Dishwasher
- Washer/Dryer
- Inverter
- AIS Receiver
- Sound System 5.1 with JL speakers
- Underwater Lights
- Garage
- Hydraulic Swim step and more ...

Aft Cockpit

- L-Shaped lounge
- Teak Flooring
- Dual Electric BBQ Grill & Griddle with Extractor fan
- Wet Bar
- Refrigerator
- Ice Maker
- Hi/Lo Cockpit Table
- Port side Joystick Control
- Fusion Stereo system
- Upgraded JL Audio speaker with JL Audio 6-channel amp
- Garage for Tender
- Hydraulic swimstep
- Aft facing awning window
- Aqualuma Gen 4 Series underwater lights
- Freshwater & Saltwater washdown

Foredeck

- Double size adjustable sunpad
- Cup holders
- Two stereo speakers
- Deep foredeck Lockers
- Muir Electric windlass
- Stainless Steel anchor
- Hella Easy Fit blue lighting

Saloon & Up-Galley

- Corian benchtop waterfall
- Walnut interior throughout
- Dual refrigerators
- Wine cooler

- Miele Microwave
- Miele Dishwasher
- Drinking water purifier w/outlet
- Two Burner cooktop with extractor fan
- Galleyware Package
- Electric Hi/Lo Dining table
- Electric side roller blinds
- Convertible dinette to daybed
- C-Zone display
- Tropical A/C
- Breakfast bar with seating
- Hi/Lo Samsung 43" Flat screen TV
- Fusion Stereo System
- 5-speaker surround sound
- Sliding windows Port & Starboard

Helm Station

- Center Helm station
- Twin 17" Garmin *Volvo Glass Bridge 8617's*. Multi-Function touchscreen displays GPS/Radar
- Garmin Depthsounder/Transducer
- C-Zone display
- Seakeeper 9 Gyro screen
- Volvo Glass cockpit navigation & monitoring system
- Volvo Joystick control
- Volvo AutoPilot
- VHF Radio
- Electric sunroof with sunshade

Master En-Suite Stateroom

- Full Beam mid-ship Master with King Berth
- Chaise lounge to starboard
- Ample storage and twin hanging lockers
- Samsung Flat screen TV
- Opening portholes
- Roller blinds
- Safe

Master En-Suite Head

- Frameless glass shower stall
- Tile floors
- Solid surface bench tops

- Opening porthole with sensor

VIP En-Suite Stateroom

- Forward centerline Queen berth
- Opening portholes
- Twin Hanging Lockers
- Ample storage
- Flat screen TV
- Roller blinds

VIP/Day Head

- Full size shower
- Tile floors
- Corian countertops
- Opening portholes

Guest Stateroom

- Hi/Lo twin berths
- 24" Flat screen TV
- Fusion Apollo Stereo system
- Hanging locker
- Storage drawers

Electronics

- Fusion Stereo System
- KVH TV6 Tri-Americas
- 5 speaker surround sound in Saloon
- Samsung flatscreen TV in Saloon & Master Stateroom
- Cummins Generator
- Seakeeper 9 Gyro

Основная информация

Тип судна: Sport Yacht

Модельный год: 2021

Год постройки: 2021

Страна: United States

Размеры

Длина общая: 57' 2" (17.42mm)

Ширина: 16

Макс. осадка: 4' 9" (1.45mm)

Скорость, вместимость и масса

Крейс. скорость: 26 Knots Kts. (30 MPH)

Дальность на крейсерской скорости:
400

Макс. скорость: 35 Knots Kts. (40 MPH)

Дальность на макс. скорости: 350 Kts.

Чистый вес: 66.4 Pounds

Вместимость воды: 211 Gallons

Вместимость сточного бака: 106 Gal
Gallons

Объем топливного бака: 793 Gal
Gallons

Размещение

Всего кают: 3

Всего коек: 6

Спальные места: 6

Всего ком. состава: 2

Корпус и палуба

Материал корпуса: Fiberglass

Материал палубы: Teak

Комплектация корпуса: Deep Vee

Дизайнер корпуса: Riviera

Дизайнер интерьера: Riviera

Информация о двигателе

Двигатели: 2

Производитель: Volvo Penta

Тип топлива: Diesel

ФОТОГРАФИИ

profile top



cockpit



cockpit in



cockpit fwd



Untitled 17



cabin fwd



cabin aft



cabin barstool



helm



Untitled 34



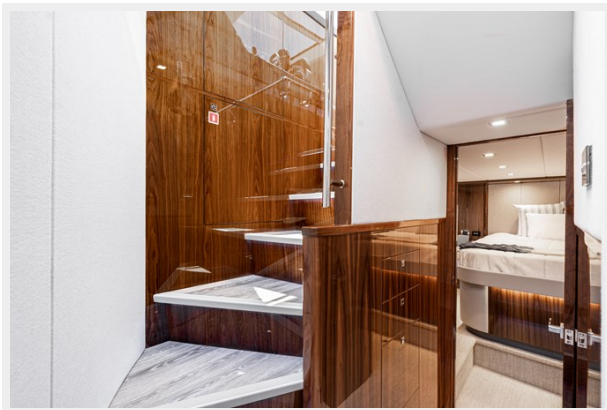
Untitled 26



Untitled 27



cabin stairs



stateroom-main



stateroom-main-fwd



head-vip



stateroom-vip



stateroom-vip fwd



head-main



stateroom-twin



Untitled 48



Untitled 47



Untitled 49



IMG_0258



IMG_0250



sunroof



Untitled 10



swimstep



IMG_0292



0-SPECS

SPECIFICATIONS					
Length Overall <small>(inc. swim platform and bow sprit)</small>	17.46 m	57' 3"	Water Capacity ***	800 L	211 US gal
Hull Length <small>(L_h to ISO8666)</small>	15.93 m	52' 3"	Holding Tank Capacity ***	400 L	106 US gal
Beam <small>(inc. gunwale)</small>	4.88 m	16'	Sleeping Capacity	6 persons	
Maximum Draft <small>(inc. prop)</small>	1.38 m	4' 9"	Cockpit Area	9.87 m ²	106.2 ft ²
Dry Weight <small>(approx.)**</small>	24,752 kg	54,596 lb	Bridge Clearance	5.05 m	16' 7"
Fuel Capacity ***	3,000 L	793 US gal	Standard Engine <small>Volvo Penta D11 IPS 950 (2x)</small>	533 kW	725 hp ea

* Length of the hull (L_h) to ISO8666: Includes all structural and integral parts (i.e. the moulded length of the hull). It excludes parts that can be removed in a non-destructive manner without affecting the structural integrity of the craft, (eg. pulpits, outdrives, driving platforms, rubbing strakes).
 ** Dry weight represents the estimated minimum weight of a yacht with standard engines and options, no fuel or water on board, no equipment or provisions and no personnel. The stated dry weight may be exceeded.
 *** Denotes net tank capacity. For useable capacity do not rely on more than 90% of tank capacity. Actual capacity will vary according to yacht trim, top and sea state. Speeds are subject to normal weather conditions, fuel and/or water levels, passengers and equipment loads.

КОНТАКТЫ

Андрей Шестаков (Andrey Shestakov) – ведущий яхтенный брокер отдела продаж яхт и судов компании Shestakov Yacht Sales Inc. Официальный представитель Shestakov Yacht Sales Inc. для русскоговорящих клиентов в центральном офисе компании в Майами/Форт Лодердейл/Флорида/США.

Контактная информация

Email: andrey@shestakovyachtsales.com

Web: shestakovyachtsales.com

Телефоны

Краснодарский край: **+7(918)465-66-44**

США, Майами, Флорида: **+1(954)274-4435**

Время работы

Понедельник – Суббота: **9:00 - 21:00**
EDT

Воскресенье: **Закрето**

Адрес



Harbour Towne Marina, 850 NE 3rd St,
STE 213, Dania, FL 33004