

ASANTE — SELENE YACHTS



Builder: SELENE YACHTS

Year Built: 2005

Model: trawler

Price: \$850,000 USD

Location: United States

LOA: 59' 10" (18.24mm)

Beam: 16.66

Min Draft: 6' (1.83mm)

Max Draft: 6' 4" (1.93mm)

Cruise Speed: 8.5 Knots Kts. (10 MPH)

Max Speed: 11 Knots Kts. (13 MPH)

Our experienced yacht broker, Andrey Shestakov, will help you choose and buy a yacht that best suits your needs **ASANTE — SELENE YACHTS** from **our catalogue**. Presently, at **Shestakov Yacht Sales Inc.**, we have a wide variety of yachts available on **our sale's list**. We also work in close contact with all the big **yacht manufacturers** from all over the world.

If you would like to buy a yacht **ASANTE — SELENE YACHTS** or would like help answering any questions concerning purchasing, selling or chartering a yacht, please call **+1(954)274-4435**

TABLE OF CONTENTS

TABLE OF CONTENTS	2
SPECIFICATIONS	3
Overview	3
Basic Information	3
Dimensions	3
Speed, Capacities and Weight	3
Accommodations	3
Hull and Deck Information	4
Engine Information	4
PHOTOS	5
2005 Selene 53 (ASANTE) Saloon	5
2005 Selene 53 (ASANTE) Saloon_2	5
2005 Selene 53 (ASANTE) Wheelhouse	5
2005 Selene 53 (ASANTE) Owner Stateroom	5
2005 Selene 53 (ASANTE) VIP Stateroom	6
2005 Selene 53 (ASANTE) Owner Head & Shower	6
2005 Selene 53 (ASANTE) Guest Head & Shower	6
2005 Selene 53 (ASANTE) Port Guest Stateroom	6
2005 Selene 53 (ASANTE) Boat Deck	7
2005 Selene 53 (ASANTE) Engine Room	7
2005 Selene 53 (ASANTE) Stern	7
2005 Selene 53 (ASANTE) Engine Room_2	7
CONTACTS	8
Contact details	8
Telephones	8
Office hours	8
Address	8

SPECIFICATIONS

Overview

ASANTE is without question the best and smartest equipped Selene 53 this broker has ever seen, which, given my years of experience supervising the design, engineering, and construction of Selenes, is offered without reservation. She truly is ready for ambitious and comfortable cruising adventures.

Basic Information

Category: trawler

Model Year: 2005

Year Built: 2005

Country: United States

Dimensions

LOA: 59' 10" (18.24mm)

LWL: 50' 10" (15.49mm)

LOD: 53' (16.15mm)

Beam: 16.66

Min Draft: 6' (1.83mm)

Max Draft: 6' 4" (1.93mm)

Speed, Capacities and Weight

Cruise Speed: 8.5 Knots Kts. (10 MPH) **Cruise Speed Range:** 2080

Max Speed: 11 Knots Kts. (13 MPH)

Water Capacity: 450 Gallons

Holding Tank: 120 Gal Gallons

Fuel Capacity: 1300 Gal Gallons

Accommodations

Total Cabins: 3

Total Berths: 6

Sleeps: 9

Total Heads: 2

Hull and Deck Information

Hull Material: Fiberglass

Exterior Designer: Howard Chen

Interior Designer: Howard Chen

Engine Information

Engines: 1

Manufacturer: John Deere

Engine Type: Inboard

Fuel Type: Diesel

PHOTOS

2005 Selene 53 (ASANTE) Saloon



2005 Selene 53 (ASANTE) Saloon_2



**2005 Selene 53 (ASANTE)
Wheelhouse**



**2005 Selene 53 (ASANTE) Owner
Stateroom**



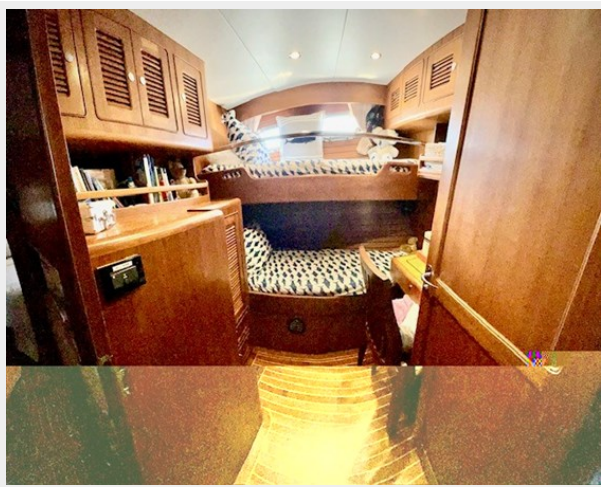
2005 Selene 53 (ASANTE) Owner Head & Shower



2005 Selene 53 (ASANTE) VIP Stateroom



2005 Selene 53 (ASANTE) Port Guest Stateroom



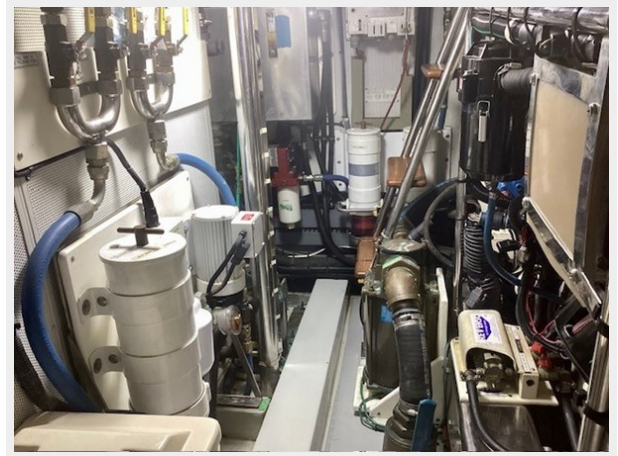
2005 Selene 53 (ASANTE) Guest Head & Shower



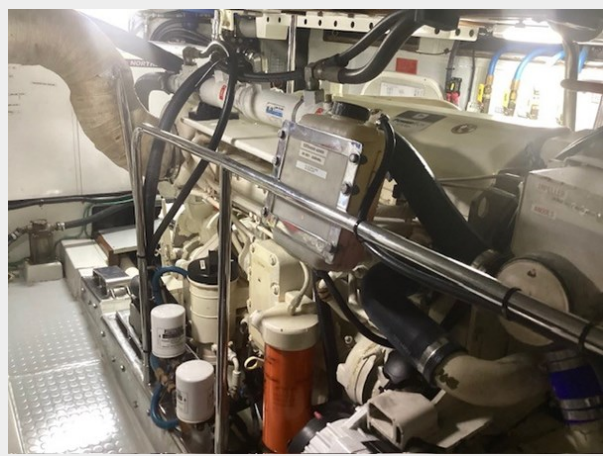
2005 Selene 53 (ASANTE) Boat Deck



2005 Selene 53 (ASANTE) Engine Room



2005 Selene 53 (ASANTE) Engine Room_2



2005 Selene 53 (ASANTE) Stern



CONTACTS

Andrey Shestakov, leading yacht broker of the sales department of Shestakov Yacht Sales Inc. Shestakov Yacht Sales Inc., the official representative of the Miami/Fort Lauderdale FL headquarters.

Contact details

Email: **andrey@shestakovyachtsales.com**

Web: shestakovyachtsales.com/en/

Telephones

USA: **+1(954)274-4435**

Office hours

Monday – Saturday: **9:00 - 21:00** EDT

Sunday: **closed**

Address



Harbour Towne Marina, 850 NE 3rd St, STE 213, Dania, FL 33004