

SCINTILLA MARIS — DAMEN YACHTING



Builder: DAMEN YACHTING

Year Built: 1988

Model: expedition yacht

Price: €19,250,000 EUR

Location: Netherlands

LOA: 149' 8" (45.6mm)

Beam: 29.52

Min Draft: 16' 1" (4.9mm)

Max Draft: 16' 9" (5.1mm)

Cruise Speed: 9 Knots Kts. (10 MPH)

Max Speed: 12 Knots Kts. (14 MPH)

Our experienced yacht broker, Andrey Shestakov, will help you choose and buy a yacht that best suits your needs **SCINTILLA MARIS — DAMEN YACHTING** from our catalogue. Presently, at Shestakov Yacht Sales Inc., we have a wide variety of yachts available on our sale's list. We also work in close contact with all the big yacht manufacturers from all over the world.

If you would like to buy a yacht **SCINTILLA MARIS — DAMEN YACHTING** or would like help answering any questions concerning purchasing, selling or chartering a yacht, please call **+1(954)274-4435**

TABLE OF CONTENTS

TABLE OF CONTENTS	2
SPECIFICATIONS	3
Overview	3
Basic Information	3
Dimensions	3
Speed, Capacities and Weight	4
Accommodations	4
Hull and Deck Information	4
Engine Information	4
PHOTOS	5
CONTACTS	12
Contact details	12
Telephones	12
Office hours	12
Address	12

SPECIFICATIONS

Overview

The 45.6m (149.6ft) SCINTILLA MARIS is a lovingly converted ocean-going trawler with a RINA-classed thickened steel hull, outstanding seakeeping and IMO Tier III-compliant hybrid propulsion giving her a 9,000nm range. Built by Damen Maaskant in 1988 and converted by the same Dutch yard in 2023, her contemporary Vripack interiors are naturally lit by 30 decklights.

During an extensive four-year rebuild, SCINTILLA MARIS was stripped down to bare steel, fully modernised and rebuilt in the owner's vision. Maintaining her original exterior lines shows off her heritage, while a step into the interior and technical spaces reveals a fully modernised expedition yacht capable of extensive autonomous cruising.

She welcomes 10 guests in five cabins as well as nine crew. All cabins are located on the lower deck, with four guest cabins forward. Aft is a massive full-beam owner's cabin aft featuring huge ceiling heights and large skylights, bringing ample natural light into her warm interior.

Basic Information

Category: expedition yacht

Sub Category: Expedition or Explorer

Model Year: 1988

Year Built: 1988

Country: Netherlands

Dimensions

LOA: 149' 8" (45.6mm)

Beam: 29.52

Min Draft: 16' 1" (4.9mm)

Max Draft: 16' 9" (5.1mm)

Speed, Capacities and Weight

Cruise Speed: 9 Knots Kts. (10 MPH)

Cruise Speed Range: 9000

Max Speed: 12 Knots Kts. (14 MPH)

Gross Tonnage: 499 Pounds

Water Capacity: 40000 Gallons

Holding Tank: 4755.1 Gal Gallons

Fuel Capacity: 40682.5 Gal Gallons

Accommodations

Total Cabins: 5

Total Berths: 10

Sleeps: 10

Crew Cabin: 9

Crew Berths: 9

Hull and Deck Information

Hull Material: Steel

Deck Material: Bolidt synthetic

Hull Configuration: Displacement w/
Bulbous Bow

Hull Color: Blue

Hull Designer: Damen Maaskant

Exterior Designer: Damen Maaskant

Interior Designer: Vripack

Engine Information

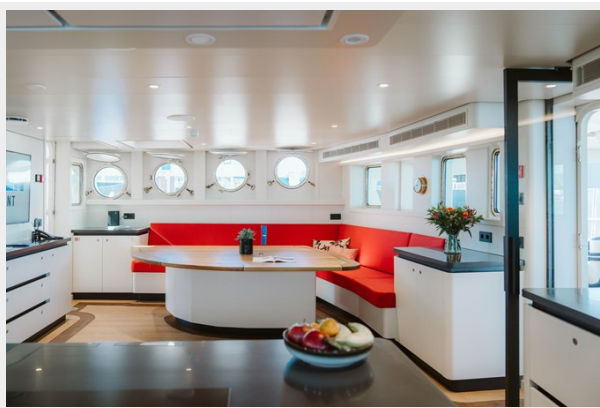
Engines: 1

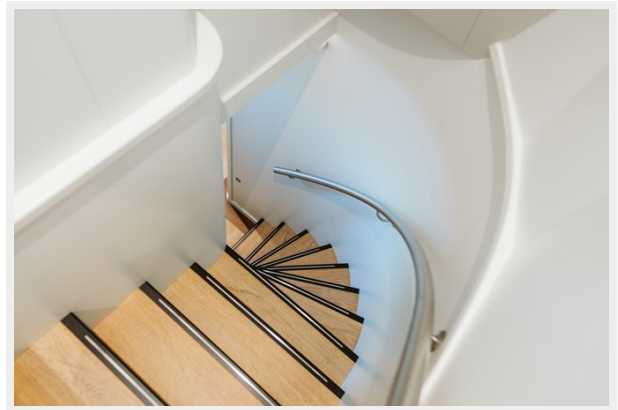
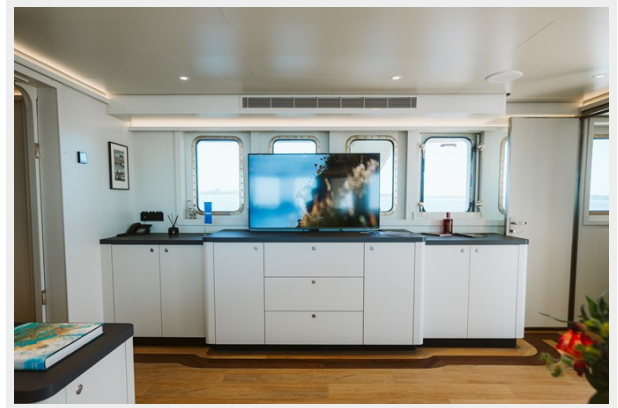
Manufacturer: Deutz

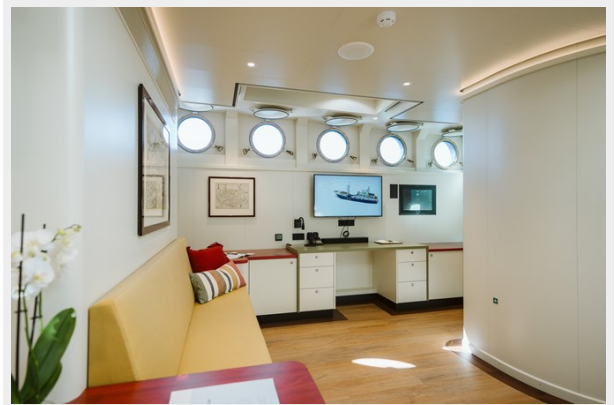
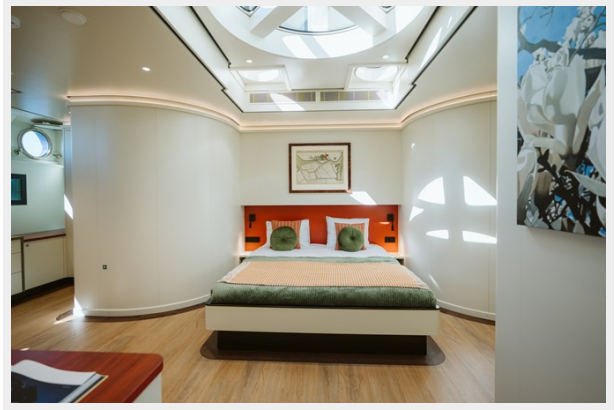
Engine Type: Inboard

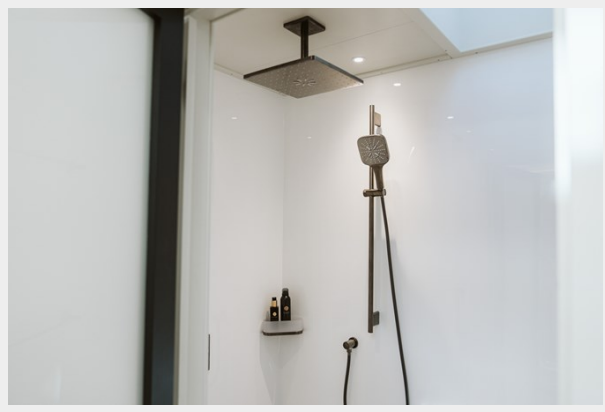
Fuel Type: Diesel/Electric

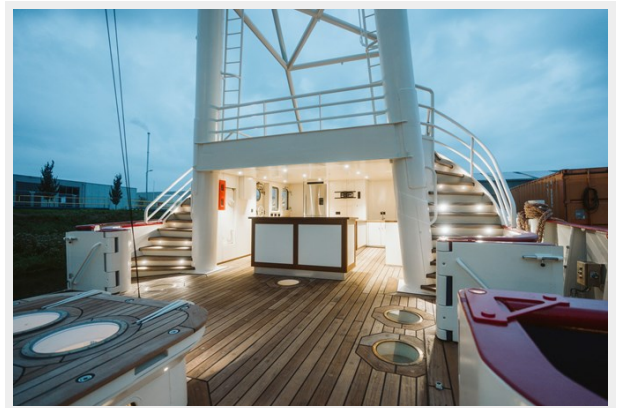
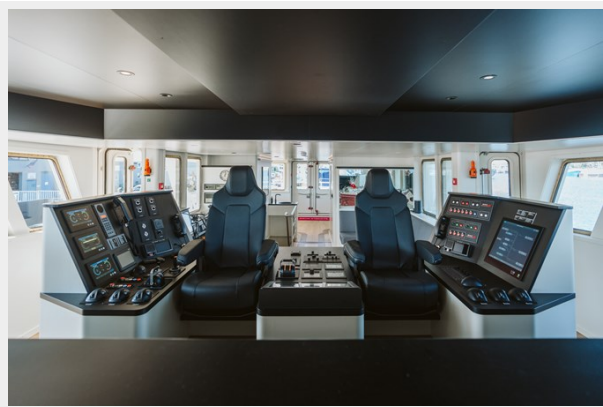
PHOTOS

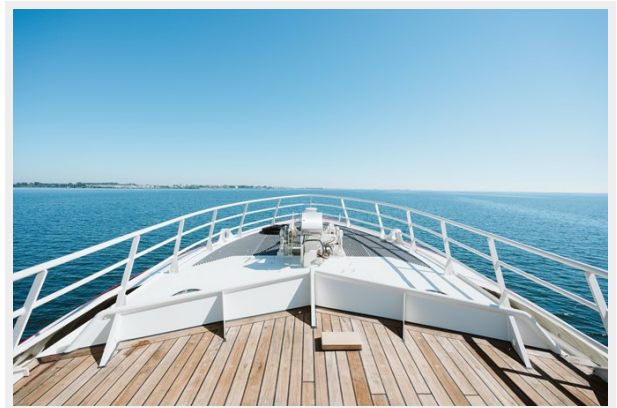
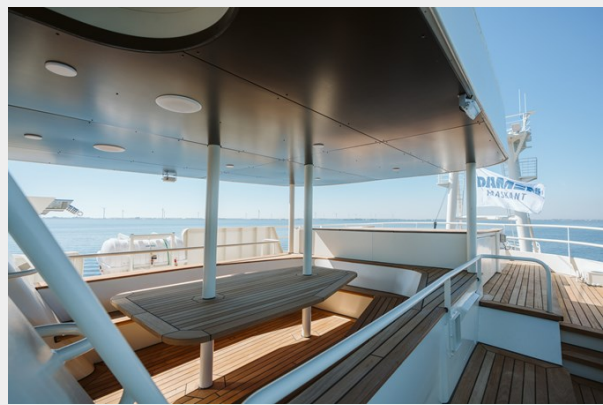
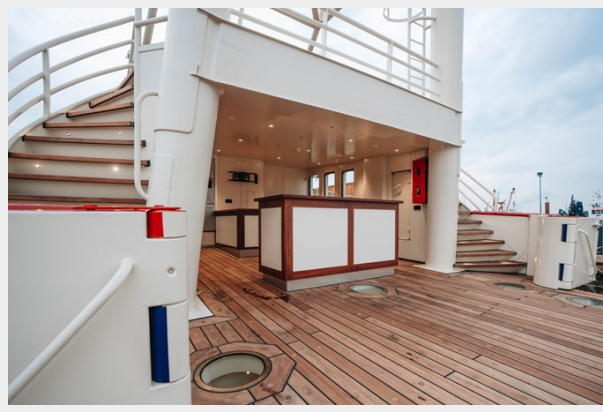














CONTACTS

Andrey Shestakov, leading yacht broker of the sales department of Shestakov Yacht Sales Inc. Shestakov Yacht Sales Inc., the official representative of the Miami/Fort Lauderdale FL headquarters.

Contact details

Email: andrey@shestakovyachtsales.com

Web: shestakovyachtsales.com/en/

Telephones

USA: +1(954)274-4435

Office hours

Monday – Saturday: **9:00 - 21:00** EDT

Sunday: **closed**

Address



Harbour Towne Marina, 850 NE 3rd St,
STE 213, Dania, FL 33004