

MUSHA — SANLORENZO



Builder: SANLORENZO

Year Built: 2012

Model: Motor Yacht

Price: €4,950,000 EUR

Location: Italy

LOA: 104' (31.7m)

Beam: 23.12

Max Draft: 7' 1" (2.15m)

Cruise Speed: 25 Knots Kts. (29 MPH)

Max Speed: 29 Knots Kts. (33 MPH)

Our experienced yacht broker, Andrey Shestakov, will help you choose and buy a yacht that best suits your needs **MUSA — SANLORENZO** from our catalogue. Presently, at Shestakov Yacht Sales Inc., we have a wide variety of yachts available on our sale's list. We also work in close contact with all the big yacht manufacturers from all over the world.

If you would like to buy a yacht **MUSA — SANLORENZO** or would like help answering any questions concerning purchasing, selling or chartering a yacht, please call **+1(954)274-4435**

TABLE OF CONTENTS

TABLE OF CONTENTS	2
SPECIFICATIONS	4
Basic Information	4
Dimensions	4
Speed, Capacities and Weight	4
Accommodations	4
Hull and Deck Information	4
Engine Information	5
PHOTOS	6
large_3164025	6
large_3164026	6
large_3164028	6
large_3164027	6
large_3164037	6
large_3164029	6
large_3164030	7
large_3164032	7
large_3164014	7
large_3164013	7
large_3164023	7
large_3164024	7
large_3164011	8
large_3164022	8
large_3164012	8
large_3164016	8
large_3164015	8
wanted.pdf-030	8
large_3164009	9

large_3164010	9
large_3164039	9
large_3164038	9
large_3164034	9
large_3164033	9
large_3164035	10
large_3164019	10
large_3164021	10
large_3164018	10
CONTACTS	11
Contact details	11
Telephones	11
Office hours	11
Address	11

SPECIFICATIONS

Basic Information

Category: Motor Yacht

Model Year: 2012

Year Built: 2012

Country: Italy

Dimensions

LOA: 104' (31.7mm)

Beam: 23.12

Max Draft: 7' 1" (2.15mm)

Speed, Capacities and Weight

Cruise Speed: 25 Knots Kts. (29 MPH)

Max Speed: 29 Knots Kts. (33 MPH)

Gross Tonnage: 199 Pounds

Water Capacity: 2800 Gallons

Fuel Capacity: 3302.15 Gal Gallons

Accommodations

Total Cabins: 4

Sleeps: 8

Crew Cabin: 6

Crew Berths: 3

Hull and Deck Information

Hull Material: GRP

Deck Material: Teak

Hull Designer: Sanlorenzo

Exterior Designer: Francesco Paszkowski

Interior Designer: Francesco Paszkowski

Engine Information

Engines: 2

Manufacturer: MTU

Fuel Type: Diesel

PHOTOS

large_3164025



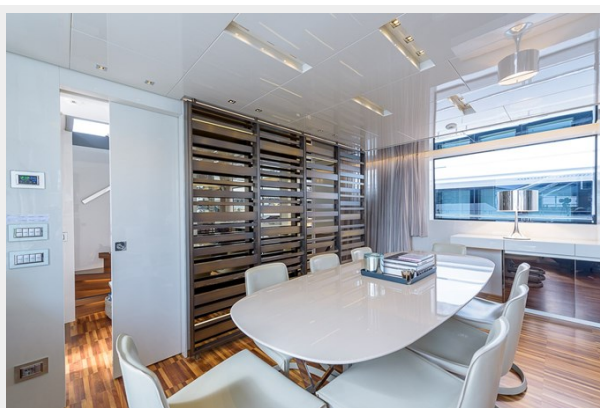
large_3164026



large_3164028



large_3164027



large_3164037



large_3164029



large_3164030



large_3164032



large_3164014



large_3164013



large_3164023



large_3164024



large_3164011



large_3164022



large_3164012



large_3164016



large_3164015



wanted.pdf-030



large_3164009



large_3164010



large_3164039



large_3164038



large_3164034



large_3164033



large_3164035



large_3164019



large_3164021



large_3164018



CONTACTS

Andrey Shestakov, leading yacht broker of the sales department of Shestakov Yacht Sales Inc. Shestakov Yacht Sales Inc., the official representative of the Miami/Fort Lauderdale FL headquarters.

Contact details

Email: andrey@shestakovyachtsales.com

Web: shestakovyachtsales.com/en/

Telephones

USA: +1(954)274-4435

Office hours

Monday – Saturday: **9:00 - 21:00** EDT

Sunday: **closed**

Address



Harbour Towne Marina, 850 NE 3rd St,
STE 213, Dania, FL 33004