

## COMMISSION BASED — FORMULA



**Builder:** FORMULA

**Year Built:** 2005

**Model:** cruiser

**Price:** \$144,000 USD

**Location:** United States

**LOA:** 37' (11.28mm)

**Beam:** 11.91

**Min Draft:** 2' 6" (0.76mm)

Our experienced yacht broker, Andrey Shestakov, will help you choose and buy a yacht that best suits your needs **Commission Based — FORMULA** from our catalogue. Presently, at Shestakov Yacht Sales Inc., we have a wide variety of yachts available on our sale's list. We also work in close contact with all the big yacht manufacturers from all over the world.

If you would like to buy a yacht **Commission Based — FORMULA** or would like help answering any questions concerning purchasing, selling or chartering a yacht, please call **+1(954)274-4435**

# TABLE OF CONTENTS

TABLE OF CONTENTS	2
SPECIFICATIONS	5
Overview	5
Basic Information	6
Dimensions	6
Speed, Capacities and Weight	6
Accommodations	6
Hull and Deck Information	6
Engine Information	6
PHOTOS	7
2005-formula-37-performance-cruiser-power-9338939-20240415073215678-1_XLARGE	7
2005-formula-37-performance-cruiser-power-9338939-20240415073216697-1_XLARGE	7
2005-formula-37-performance-cruiser-power-9338939-20240415073217765-1_XLARGE	7
2005-formula-37-performance-cruiser-power-9338939-20240415073218693-1_XLARGE	7
2005-formula-37-performance-cruiser-power-9338939-20240415073214685-1_XLARGE	8
2005-formula-37-performance-cruiser-power-9338939-20240415073228833-1_XLARGE	8
2005-formula-37-performance-cruiser-power-9338939-20240415073224786-1_XLARGE	8
2005-formula-37-performance-cruiser-power-9338939-20240415073240067-1_XLARGE	8
2005-formula-37-performance-cruiser-power-9338939-20240415073242107-1_XLARGE	8
2005-formula-37-performance-cruiser-power-9338939-20240415073241063-1_XLARGE	8
2005-formula-37-performance-cruiser-power-9338939-20240415073229864-1_XLARGE	9
2005-formula-37-performance-cruiser-power-9338939-20240415073222746-1_XLARGE	9
2005-formula-37-performance-cruiser-power-9338939-20240415073238019-1_XLARGE	9
2005-formula-37-performance-cruiser-power-9338939-20240415073239046-1_XLARGE	9
2005-formula-37-performance-cruiser-power-9338939-20240415073235014-1_XLARGE	10
2005-formula-37-performance-cruiser-power-9338939-20240415073233968-1_XLARGE	10
2005-formula-37-performance-cruiser-power-9338939-20240415073548172-1_XLARGE	10
2005-formula-37-performance-cruiser-power-9338939-20240415073235990-1_XLARGE	10

---

---

2005-formula-37-performance-cruiser-power-9338939-20240415073220746-1_XLARGE	10
2005-formula-37-performance-cruiser-power-9338939-20240415073237024-1_XLARGE	10
2005-formula-37-performance-cruiser-power-9338939-20240415073243080-1_XLARGE	11
2005-formula-37-performance-cruiser-power-9338939-20240415073231938-1_XLARGE	11
2005-formula-37-performance-cruiser-power-9338939-20240415073225810-1_XLARGE	11
2005-formula-37-performance-cruiser-power-9338939-20240415073232935-1_XLARGE	11
2005-formula-37-performance-cruiser-power-9338939-20240415073226823-1_XLARGE	12
2005-formula-37-performance-cruiser-power-9338939-20240415073227857-1_XLARGE	12
2005-formula-37-performance-cruiser-power-9338939-20240415073230873-1_XLARGE	12
2005-formula-37-performance-cruiser-power-9338939-20240415073252194-1_XLARGE	12
2005-formula-37-performance-cruiser-power-9338939-20240415073257214-1_XLARGE	12
2005-formula-37-performance-cruiser-power-9338939-20240415073254209-1_XLARGE	12
2005-formula-37-performance-cruiser-power-9338939-20240415073256207-1_XLARGE	13
2005-formula-37-performance-cruiser-power-9338939-20240415073253159-1_XLARGE	13
2005-formula-37-performance-cruiser-power-9338939-20240415073247122-1_XLARGE	13
2005-formula-37-performance-cruiser-power-9338939-20240415073246104-1_XLARGE	13
2005-formula-37-performance-cruiser-power-9338939-20240415073255187-1_XLARGE	14
2005-formula-37-performance-cruiser-power-9338939-20240415073302288-1_XLARGE	14
2005-formula-37-performance-cruiser-power-9338939-20240415073303314-1_XLARGE	14
2005-formula-37-performance-cruiser-power-9338939-20240415073300276-1_XLARGE	14
2005-formula-37-performance-cruiser-power-9338939-20240415073259219-1_XLARGE	14
2005-formula-37-performance-cruiser-power-9338939-20240415073301318-1_XLARGE	14
2005-formula-37-performance-cruiser-power-9338939-20240415073244107-1_XLARGE	15
2005-formula-37-performance-cruiser-power-9338939-20240415073249149-1_XLARGE	15
2005-formula-37-performance-cruiser-power-9338939-20240415073250161-1_XLARGE	15
2005-formula-37-performance-cruiser-power-9338939-20240415073248158-1_XLARGE	15
2005-formula-37-performance-cruiser-power-9338939-20240415073304341-1_XLARGE	16
2005-formula-37-performance-cruiser-power-9338939-20240415073245178-1_XLARGE	16
2005-formula-37-performance-cruiser-power-9338939-20240415073258223-1_XLARGE	16

---

---

---

2005-formula-37-performance-cruiser-power-9338939-20240415073305375-1_XLARGE	16
2005-formula-37-performance-cruiser-power-9338939-20240415073306342-1_XLARGE	16
2005-formula-37-performance-cruiser-power-9338939-20240415073308385-1_XLARGE	16
2005-formula-37-performance-cruiser-power-9338939-20240415073315437-1_XLARGE	17
2005-formula-37-performance-cruiser-power-9338939-20240415073307399-1_XLARGE	17
2005-formula-37-performance-cruiser-power-9338939-20240415073310385-1_XLARGE	17
2005-formula-37-performance-cruiser-power-9338939-20240415073309420-1_XLARGE	17
2005-formula-37-performance-cruiser-power-9338939-20240415073311391-1_XLARGE	17
2005-formula-37-performance-cruiser-power-9338939-20240415073313415-1_XLARGE	17
2005-formula-37-performance-cruiser-power-9338939-20240415073322549-1_XLARGE	18
2005-formula-37-performance-cruiser-power-9338939-20240415073316475-1_XLARGE	18
2005-formula-37-performance-cruiser-power-9338939-20240415073319542-1_XLARGE	18
2005-formula-37-performance-cruiser-power-9338939-20240415073318530-1_XLARGE	18
2005-formula-37-performance-cruiser-power-9338939-20240415073317521-1_XLARGE	18
2005-formula-37-performance-cruiser-power-9338939-20240415073321545-1_XLARGE	18
2005-formula-37-performance-cruiser-power-9338939-20240415073320539-1_XLARGE	19
<b>CONTACTS</b>	<b>20</b>
Contact details	20
Telephones	20
Office hours	20
Address	20

---

# SPECIFICATIONS

---

## Overview

---

### 2005 Formula 37 PC (Performance Cruiser)

**Commission Based** is a Formula 37 PC that stands apart for her premium-quality construction and meticulous attention to detail. This boat is in excellent condition and is worth a good look.

Formula is the only builder in this class that offers standard Imron hull graphics; and with proper care the boat will always look new. The owner has kept this hull blemish free. The 6'6" of headroom below, the wide-open cabin sleeps six people—two forward, two in the midcabin lounge behind the companionway steps, and two in the salon with the crescent-shaped sofa converted. The enclosed head has a separate shower hot and cold water stall, and the dinette features Ultraleather upholstery and a solid cherry table.

Commission Based has been lift stored, or rack stored for most of its life. The bottom paint is in exceptional condition as it is not stored in the water, the bottom paint was refreshed in 2021. Both Volvo 8.1L motors (P 507hrs, S 510hrs) have had risers and manifolds replaced. Receipts for work are available for inspection. Two new engine batteries were installed recently.

The Formula's U-shaped cockpit lounge seats eight adults and quickly converts into a large sun pad. Upgraded new cockpit carpets. The cockpit wet bar includes a sink and a new refrigerator. Bow access is via the walk thru windshield, provides safe access to the bow without worry. The two new sun pads on the bow are easily removed with zippers. The transom and rear seat unit lift electrically for engine access.

Commission Based electronics includes a new Garmin 10" GPS display with Radar & Depth. The main cabin has a flat panel TV with Bose sound system, as well as stereo with Bluetooth, Pandora, CD, and AM/FM. The canvas is in very good condition and has the complete enclosure with isinglass for cooler days. When not in use, the boat has a new cockpit cover to protect the excellent condition upholstery. This boat also includes a central vacuum system, and is wired for satellite TV. Formula is good about adding in extra features such as an anchor wash station on the bow.

As you know Formulas are a very seaworthy boat, with exceptional quality. A great boat to explore Florida's many anchorages with the Kohler 7.3KW Generator (with 328hrs) and the air conditioner to make for a comfortable nights sleep. Commission Based is ready to go!

---

## Basic Information

---

**Category:** cruiser

**Sub Category:** Express

**Model Year:** 2005

**Year Built:** 2005

**Country:** United States

---

## Dimensions

---

**LOA:** 37' (11.28mm)

**Beam:** 11.91

**Min Draft:** 2' 6" (0.76mm)

---

## Speed, Capacities and Weight

---

**Water Capacity:** 45 Gallons

**Holding Tank:** 45 Gal Gallons

**Fuel Capacity:** 236 Gal Gallons

---

## Accommodations

---

**Total Cabins:** 2

---

## Hull and Deck Information

---

**Hull Material:** Fiberglass

---

## Engine Information

---

**Engines:** 2

**Manufacturer:** Volvo Penta

**Engine Type:** I/O

**Fuel Type:** Gas/Petrol

# PHOTOS

**2005-formula-37-performance-cruiser-  
power-9338939-20240415073215678-  
1\_XLARGE**



**2005-formula-37-performance-cruiser-  
power-9338939-20240415073216697-  
1\_XLARGE**



**2005-formula-37-performance-cruiser-  
power-9338939-20240415073217765-  
1\_XLARGE**



**2005-formula-37-performance-cruiser-  
power-9338939-20240415073218693-  
1\_XLARGE**



**2005-formula-37-performance-cruiser-  
power-9338939-20240415073214685-  
1\_XLARGE**



**2005-formula-37-performance-cruiser-  
power-9338939-20240415073228833-  
1\_XLARGE**



**2005-formula-37-performance-cruiser-  
power-9338939-20240415073224786-  
1\_XLARGE**



**2005-formula-37-performance-cruiser-  
power-9338939-20240415073240067-  
1\_XLARGE**



**2005-formula-37-performance-cruiser-  
power-9338939-20240415073242107-  
1\_XLARGE**



**2005-formula-37-performance-cruiser-  
power-9338939-20240415073241063-  
1\_XLARGE**





**2005-formula-37-performance-cruiser-  
power-9338939-20240415073229864-  
1\_XLARGE**



**2005-formula-37-performance-cruiser-  
power-9338939-20240415073222746-  
1\_XLARGE**



**2005-formula-37-performance-cruiser-  
power-9338939-20240415073238019-  
1\_XLARGE**



**2005-formula-37-performance-cruiser-  
power-9338939-20240415073239046-  
1\_XLARGE**



**2005-formula-37-performance-cruiser-  
power-9338939-20240415073235014-  
1\_XLARGE**



**2005-formula-37-performance-cruiser-  
power-9338939-20240415073233968-  
1\_XLARGE**



**2005-formula-37-performance-cruiser-  
power-9338939-20240415073548172-  
1\_XLARGE**



**2005-formula-37-performance-cruiser-  
power-9338939-20240415073235990-  
1\_XLARGE**



**2005-formula-37-performance-cruiser-  
power-9338939-20240415073220746-  
1\_XLARGE**



**2005-formula-37-performance-cruiser-  
power-9338939-20240415073237024-  
1\_XLARGE**



**2005-formula-37-performance-cruiser-  
power-9338939-20240415073243080-  
1\_XLARGE**



**2005-formula-37-performance-cruiser-  
power-9338939-20240415073231938-  
1\_XLARGE**



**2005-formula-37-performance-cruiser-  
power-9338939-20240415073232935-  
1\_XLARGE**



**2005-formula-37-performance-cruiser-  
power-9338939-20240415073225810-  
1\_XLARGE**



**2005-formula-37-performance-cruiser-  
power-9338939-20240415073226823-  
1\_XLARGE**



**2005-formula-37-performance-cruiser-  
power-9338939-20240415073227857-  
1\_XLARGE**



**2005-formula-37-performance-cruiser-  
power-9338939-20240415073230873-  
1\_XLARGE**



**2005-formula-37-performance-cruiser-  
power-9338939-20240415073252194-  
1\_XLARGE**



**2005-formula-37-performance-cruiser-  
power-9338939-20240415073257214-  
1\_XLARGE**



**2005-formula-37-performance-cruiser-  
power-9338939-20240415073254209-  
1\_XLARGE**



**2005-formula-37-performance-cruiser-  
power-9338939-20240415073253159-  
1\_XLARGE**



**2005-formula-37-performance-cruiser-  
power-9338939-20240415073256207-  
1\_XLARGE**



**2005-formula-37-performance-cruiser-  
power-9338939-20240415073247122-  
1\_XLARGE**



**2005-formula-37-performance-cruiser-  
power-9338939-20240415073246104-  
1\_XLARGE**



**2005-formula-37-performance-cruiser-  
power-9338939-20240415073255187-  
1\_XLARGE**



**2005-formula-37-performance-cruiser-  
power-9338939-20240415073302288-  
1\_XLARGE**



**2005-formula-37-performance-cruiser-  
power-9338939-20240415073303314-  
1\_XLARGE**



**2005-formula-37-performance-cruiser-  
power-9338939-20240415073300276-  
1\_XLARGE**



**2005-formula-37-performance-cruiser-  
power-9338939-20240415073259219-  
1\_XLARGE**



**2005-formula-37-performance-cruiser-  
power-9338939-20240415073301318-  
1\_XLARGE**



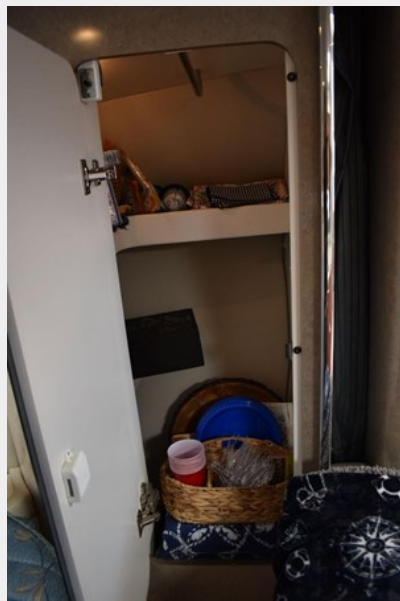
**2005-formula-37-performance-cruiser-  
power-9338939-20240415073244107-  
1\_XLARGE**



**2005-formula-37-performance-cruiser-  
power-9338939-20240415073249149-  
1\_XLARGE**



**2005-formula-37-performance-cruiser-  
power-9338939-20240415073250161-  
1\_XLARGE**



**2005-formula-37-performance-cruiser-  
power-9338939-20240415073248158-  
1\_XLARGE**



2005-formula-37-performance-cruiser-  
power-9338939-20240415073304341-  
1\_XLARGE



2005-formula-37-performance-cruiser-  
power-9338939-20240415073245178-  
1\_XLARGE



2005-formula-37-performance-cruiser-  
power-9338939-20240415073258223-  
1\_XLARGE



2005-formula-37-performance-cruiser-  
power-9338939-20240415073305375-  
1\_XLARGE



2005-formula-37-performance-cruiser-  
power-9338939-20240415073306342-  
1\_XLARGE



2005-formula-37-performance-cruiser-  
power-9338939-20240415073308385-  
1\_XLARGE

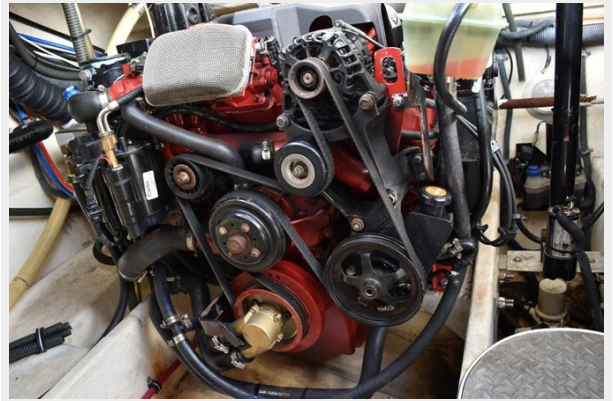




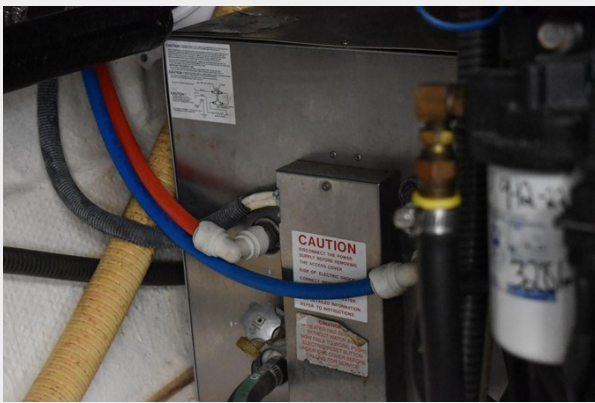
2005-formula-37-performance-cruiser-  
power-9338939-20240415073315437-  
1\_XLARGE



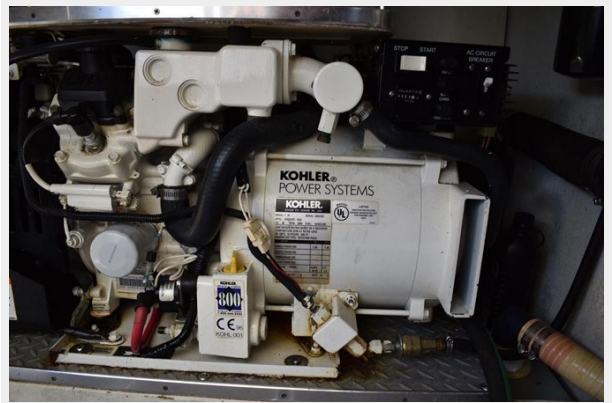
2005-formula-37-performance-cruiser-  
power-9338939-20240415073307399-  
1\_XLARGE



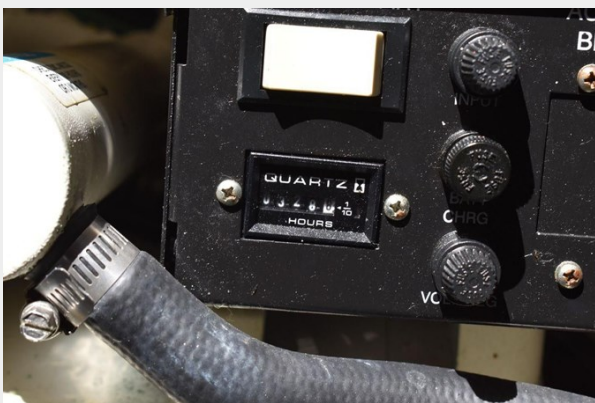
2005-formula-37-performance-cruiser-  
power-9338939-20240415073310385-  
1\_XLARGE



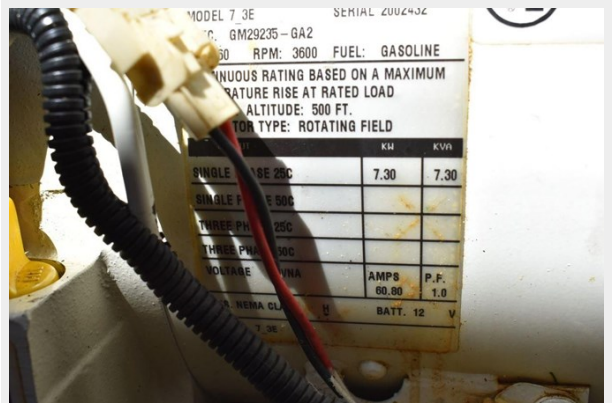
2005-formula-37-performance-cruiser-  
power-9338939-20240415073309420-  
1\_XLARGE



2005-formula-37-performance-cruiser-  
power-9338939-20240415073311391-  
1\_XLARGE



2005-formula-37-performance-cruiser-  
power-9338939-20240415073313415-  
1\_XLARGE



**2005-formula-37-performance-cruiser-  
power-9338939-20240415073322549-  
1\_XLARGE**



**2005-formula-37-performance-cruiser-  
power-9338939-20240415073316475-  
1\_XLARGE**



**2005-formula-37-performance-cruiser-  
power-9338939-20240415073319542-  
1\_XLARGE**



**2005-formula-37-performance-cruiser-  
power-9338939-20240415073318530-  
1\_XLARGE**



**2005-formula-37-performance-cruiser-  
power-9338939-20240415073317521-  
1\_XLARGE**



**2005-formula-37-performance-cruiser-  
power-9338939-20240415073321545-  
1\_XLARGE**



2005-formula-37-performance-cruiser-power-9338939-20240415073320539-1\_XLARGE



# CONTACTS

---

Andrey Shestakov, leading yacht broker of the sales department of Shestakov Yacht Sales Inc. Shestakov Yacht Sales Inc., the official representative of the Miami/Fort Lauderdale FL headquarters.

## Contact details

---

Email: [andrey@shestakovyachtsales.com](mailto:andrey@shestakovyachtsales.com)

Web: [shestakovyachtsales.com/en/](http://shestakovyachtsales.com/en/)

## Telephones

---

USA: +1(954)274-4435

## Office hours

---

Monday – Saturday: **9:00 - 21:00** EDT

Sunday: **closed**

## Address

---



Harbour Towne Marina, 850 NE 3rd St,  
STE 213, Dania, FL 33004