

COMMISSION BASED — FORMULA



Судостроитель: FORMULA

Год постройки: 2005

Модель: Крейсер

Цена: \$144,000 USD

Местонахождение: United States

Длина общая: 37' (11.28mm)

Ширина: 11.91

Мин. осадка: 2' 6" (0.76mm)

Купить **Commission Based — FORMULA** а также выбрать подходящую вам яхту из нашего каталога яхт вам поможет опытный яхтенный брокер Андрей Шестаков. На сегодняшний день компания **Shestakov Yacht Sales Inc.** имеет большое количество яхт в собственном списке продаж, а также тесно сотрудничает со всеми крупными яхтенными производителями по всему миру.

Для того чтобы купить яхту **Commission Based — FORMULA** а также проконсультироваться по любому вопросу связанному с покупкой, продажей, чартером яхт позвоните по телефону **+7(918)465-66-44**.

ОГЛАВЛЕНИЕ

ОГЛАВЛЕНИЕ	2
ХАРАКТЕРИСТИКИ	5
Обзор	5
Основная информация	6
Размеры	6
Скорость, вместимость и масса	6
Размещение	6
Корпус и палуба	6
Информация о двигателе	6
ФОТОГРАФИИ	7
2005-formula-37-performance-cruiser-power-9338939-20240415073215678-1_XLARGE	7
2005-formula-37-performance-cruiser-power-9338939-20240415073216697-1_XLARGE	7
2005-formula-37-performance-cruiser-power-9338939-20240415073217765-1_XLARGE	7
2005-formula-37-performance-cruiser-power-9338939-20240415073218693-1_XLARGE	7
2005-formula-37-performance-cruiser-power-9338939-20240415073214685-1_XLARGE	8
2005-formula-37-performance-cruiser-power-9338939-20240415073228833-1_XLARGE	8
2005-formula-37-performance-cruiser-power-9338939-20240415073224786-1_XLARGE	8
2005-formula-37-performance-cruiser-power-9338939-20240415073240067-1_XLARGE	8
2005-formula-37-performance-cruiser-power-9338939-20240415073242107-1_XLARGE	8
2005-formula-37-performance-cruiser-power-9338939-20240415073241063-1_XLARGE	8
2005-formula-37-performance-cruiser-power-9338939-20240415073229864-1_XLARGE	9
2005-formula-37-performance-cruiser-power-9338939-20240415073222746-1_XLARGE	9
2005-formula-37-performance-cruiser-power-9338939-20240415073238019-1_XLARGE	9
2005-formula-37-performance-cruiser-power-9338939-20240415073239046-1_XLARGE	9
2005-formula-37-performance-cruiser-power-9338939-20240415073235014-1_XLARGE	10
2005-formula-37-performance-cruiser-power-9338939-20240415073233968-1_XLARGE	10
2005-formula-37-performance-cruiser-power-9338939-20240415073548172-1_XLARGE	10
2005-formula-37-performance-cruiser-power-9338939-20240415073235990-1_XLARGE	10

2005-formula-37-performance-cruiser-power-9338939-20240415073220746-1_XLARGE	10
2005-formula-37-performance-cruiser-power-9338939-20240415073237024-1_XLARGE	10
2005-formula-37-performance-cruiser-power-9338939-20240415073243080-1_XLARGE	11
2005-formula-37-performance-cruiser-power-9338939-20240415073231938-1_XLARGE	11
2005-formula-37-performance-cruiser-power-9338939-20240415073225810-1_XLARGE	11
2005-formula-37-performance-cruiser-power-9338939-20240415073232935-1_XLARGE	11
2005-formula-37-performance-cruiser-power-9338939-20240415073226823-1_XLARGE	12
2005-formula-37-performance-cruiser-power-9338939-20240415073227857-1_XLARGE	12
2005-formula-37-performance-cruiser-power-9338939-20240415073230873-1_XLARGE	12
2005-formula-37-performance-cruiser-power-9338939-20240415073252194-1_XLARGE	12
2005-formula-37-performance-cruiser-power-9338939-20240415073257214-1_XLARGE	12
2005-formula-37-performance-cruiser-power-9338939-20240415073254209-1_XLARGE	12
2005-formula-37-performance-cruiser-power-9338939-20240415073256207-1_XLARGE	13
2005-formula-37-performance-cruiser-power-9338939-20240415073253159-1_XLARGE	13
2005-formula-37-performance-cruiser-power-9338939-20240415073247122-1_XLARGE	13
2005-formula-37-performance-cruiser-power-9338939-20240415073246104-1_XLARGE	13
2005-formula-37-performance-cruiser-power-9338939-20240415073255187-1_XLARGE	14
2005-formula-37-performance-cruiser-power-9338939-20240415073302288-1_XLARGE	14
2005-formula-37-performance-cruiser-power-9338939-20240415073303314-1_XLARGE	14
2005-formula-37-performance-cruiser-power-9338939-20240415073300276-1_XLARGE	14
2005-formula-37-performance-cruiser-power-9338939-20240415073259219-1_XLARGE	14
2005-formula-37-performance-cruiser-power-9338939-20240415073301318-1_XLARGE	14
2005-formula-37-performance-cruiser-power-9338939-20240415073244107-1_XLARGE	15
2005-formula-37-performance-cruiser-power-9338939-20240415073249149-1_XLARGE	15
2005-formula-37-performance-cruiser-power-9338939-20240415073250161-1_XLARGE	15
2005-formula-37-performance-cruiser-power-9338939-20240415073248158-1_XLARGE	15
2005-formula-37-performance-cruiser-power-9338939-20240415073304341-1_XLARGE	16
2005-formula-37-performance-cruiser-power-9338939-20240415073245178-1_XLARGE	16
2005-formula-37-performance-cruiser-power-9338939-20240415073258223-1_XLARGE	16

2005-formula-37-performance-cruiser-power-9338939-20240415073305375-1_XLARGE	16
2005-formula-37-performance-cruiser-power-9338939-20240415073306342-1_XLARGE	16
2005-formula-37-performance-cruiser-power-9338939-20240415073308385-1_XLARGE	16
2005-formula-37-performance-cruiser-power-9338939-20240415073315437-1_XLARGE	17
2005-formula-37-performance-cruiser-power-9338939-20240415073307399-1_XLARGE	17
2005-formula-37-performance-cruiser-power-9338939-20240415073310385-1_XLARGE	17
2005-formula-37-performance-cruiser-power-9338939-20240415073309420-1_XLARGE	17
2005-formula-37-performance-cruiser-power-9338939-20240415073311391-1_XLARGE	17
2005-formula-37-performance-cruiser-power-9338939-20240415073313415-1_XLARGE	17
2005-formula-37-performance-cruiser-power-9338939-20240415073322549-1_XLARGE	18
2005-formula-37-performance-cruiser-power-9338939-20240415073316475-1_XLARGE	18
2005-formula-37-performance-cruiser-power-9338939-20240415073319542-1_XLARGE	18
2005-formula-37-performance-cruiser-power-9338939-20240415073318530-1_XLARGE	18
2005-formula-37-performance-cruiser-power-9338939-20240415073317521-1_XLARGE	18
2005-formula-37-performance-cruiser-power-9338939-20240415073321545-1_XLARGE	18
2005-formula-37-performance-cruiser-power-9338939-20240415073320539-1_XLARGE	19
КОНТАКТЫ	20
Контактная информация	20
Телефоны	20
Время работы	20
Адрес	20

ХАРАКТЕРИСТИКИ

Обзор

2005 Formula 37 PC (Performance Cruiser)

Commission Based is a Formula 37 PC that stands apart for her premium-quality construction and meticulous attention to detail. This boat is in excellent condition and is worth a good look.

Formula is the only builder in this class that offers standard Imron hull graphics; and with proper care the boat will always look new. The owner has kept this hull blemish free. The 6'6" of headroom below, the wide-open cabin sleeps six people—two forward, two in the midcabin lounge behind the companionway steps, and two in the salon with the crescent-shaped sofa converted. The enclosed head has a separate shower hot and cold water stall, and the dinette features Ultraleather upholstery and a solid cherry table.

Commission Based has been lift stored, or rack stored for most of its life. The bottom paint is in exceptional condition as it is not stored in the water, the bottom paint was refreshed in 2021. Both Volvo 8.1L motors (P 507hrs, S 510hrs) have had risers and manifolds replaced. Receipts for work are available for inspection. Two new engine batteries were installed recently.

The Formula's U-shaped cockpit lounge seats eight adults and quickly converts into a large sun pad. Upgraded new cockpit carpets. The cockpit wet bar includes a sink and a new refrigerator. Bow access is via the walk thru windshield, provides safe access to the bow without worry. The two new sun pads on the bow are easily removed with zippers. The transom and rear seat unit lift electrically for engine access.

Commission Based electronics includes a new Garmin 10" GPS display with Radar & Depth. The main cabin has a flat panel TV with Bose sound system, as well as stereo with Bluetooth, Pandora, CD, and AM/FM. The canvas is in very good condition and has the complete enclosure with isinglass for cooler days. When not in use, the boat has a new cockpit cover to protect the excellent condition upholstery. This boat also includes a central vacuum system, and is wired for satellite TV. Formula is good about adding in extra features such as an anchor wash station on the bow.

As you know Formulas are a very seaworthy boat, with exceptional quality. A great boat to explore Florida's many anchorages with the Kohler 7.3KW Generator (with 328hrs) and the air conditioner to make for a comfortable nights sleep. Commission Based is ready to go!

Основная информация

Тип судна: Крейсер

Подкатегория: Express

Модельный год: 2005

Год постройки: 2005

Страна: United States

Размеры

Длина общая: 37' (11.28mm)

Ширина: 11.91

Мин. осадка: 2' 6" (0.76mm)

Скорость, вместимость и масса

Вместимость воды: 45 Gallons

Вместимость сточного бака: 45 Gal
Gallons

Объем топливного бака: 236 Gal Gallons

Размещение

Всего кают: 2

Корпус и палуба

Материал корпуса: Fiberglass

Информация о двигателе

Двигатели: 2

Производитель: Volvo Penta

Тип двигателя: I/O

Тип топлива: Gas/Petrol

ФОТОГРАФИИ

**2005-formula-37-performance-cruiser-
power-9338939-20240415073215678-
1_XLARGE**



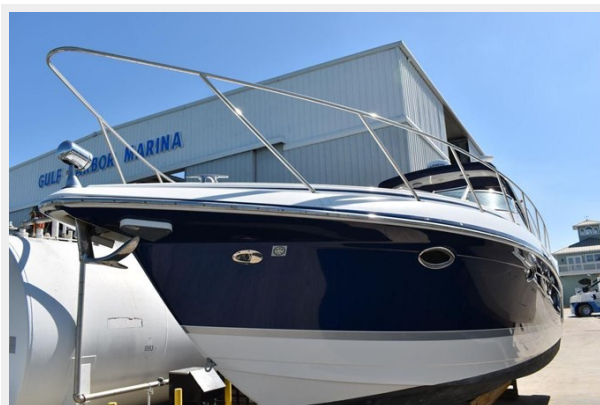
**2005-formula-37-performance-cruiser-
power-9338939-20240415073216697-
1_XLARGE**



**2005-formula-37-performance-cruiser-
power-9338939-20240415073217765-
1_XLARGE**



**2005-formula-37-performance-cruiser-
power-9338939-20240415073218693-
1_XLARGE**



**2005-formula-37-performance-cruiser-
power-9338939-20240415073214685-
1_XLARGE**



**2005-formula-37-performance-cruiser-
power-9338939-20240415073228833-
1_XLARGE**



**2005-formula-37-performance-cruiser-
power-9338939-20240415073224786-
1_XLARGE**



**2005-formula-37-performance-cruiser-
power-9338939-20240415073240067-
1_XLARGE**



**2005-formula-37-performance-cruiser-
power-9338939-20240415073242107-
1_XLARGE**



**2005-formula-37-performance-cruiser-
power-9338939-20240415073241063-
1_XLARGE**



**2005-formula-37-performance-cruiser-
power-9338939-20240415073229864-
1_XLARGE**



**2005-formula-37-performance-cruiser-
power-9338939-20240415073222746-
1_XLARGE**



**2005-formula-37-performance-cruiser-
power-9338939-20240415073238019-
1_XLARGE**



**2005-formula-37-performance-cruiser-
power-9338939-20240415073239046-
1_XLARGE**



**2005-formula-37-performance-cruiser-
power-9338939-20240415073235014-
1_XLARGE**



**2005-formula-37-performance-cruiser-
power-9338939-20240415073233968-
1_XLARGE**



**2005-formula-37-performance-cruiser-
power-9338939-20240415073548172-
1_XLARGE**



**2005-formula-37-performance-cruiser-
power-9338939-20240415073235990-
1_XLARGE**



**2005-formula-37-performance-cruiser-
power-9338939-20240415073220746-
1_XLARGE**



**2005-formula-37-performance-cruiser-
power-9338939-20240415073237024-
1_XLARGE**



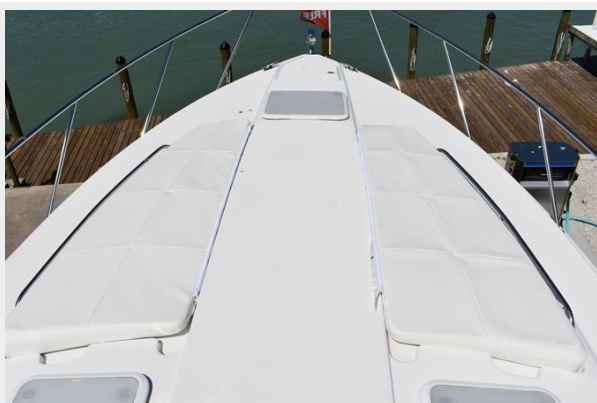
**2005-formula-37-performance-cruiser-
power-9338939-20240415073243080-
1_XLARGE**



**2005-formula-37-performance-cruiser-
power-9338939-20240415073231938-
1_XLARGE**



**2005-formula-37-performance-cruiser-
power-9338939-20240415073232935-
1_XLARGE**



**2005-formula-37-performance-cruiser-
power-9338939-20240415073225810-
1_XLARGE**



**2005-formula-37-performance-cruiser-
power-9338939-20240415073226823-
1_XLARGE**



**2005-formula-37-performance-cruiser-
power-9338939-20240415073227857-
1_XLARGE**



**2005-formula-37-performance-cruiser-
power-9338939-20240415073230873-
1_XLARGE**



**2005-formula-37-performance-cruiser-
power-9338939-20240415073252194-
1_XLARGE**



**2005-formula-37-performance-cruiser-
power-9338939-20240415073257214-
1_XLARGE**



**2005-formula-37-performance-cruiser-
power-9338939-20240415073254209-
1_XLARGE**



**2005-formula-37-performance-cruiser-
power-9338939-20240415073253159-
1_XLARGE**



**2005-formula-37-performance-cruiser-
power-9338939-20240415073256207-
1_XLARGE**



**2005-formula-37-performance-cruiser-
power-9338939-20240415073247122-
1_XLARGE**



**2005-formula-37-performance-cruiser-
power-9338939-20240415073246104-
1_XLARGE**



**2005-formula-37-performance-cruiser-
power-9338939-20240415073255187-
1_XLARGE**



**2005-formula-37-performance-cruiser-
power-9338939-20240415073302288-
1_XLARGE**



**2005-formula-37-performance-cruiser-
power-9338939-20240415073303314-
1_XLARGE**



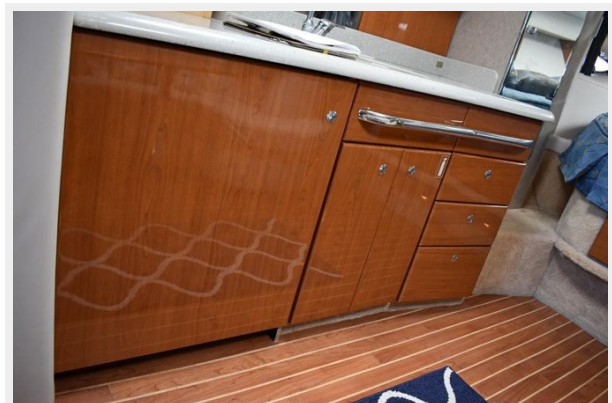
**2005-formula-37-performance-cruiser-
power-9338939-20240415073300276-
1_XLARGE**



**2005-formula-37-performance-cruiser-
power-9338939-20240415073259219-
1_XLARGE**



**2005-formula-37-performance-cruiser-
power-9338939-20240415073301318-
1_XLARGE**



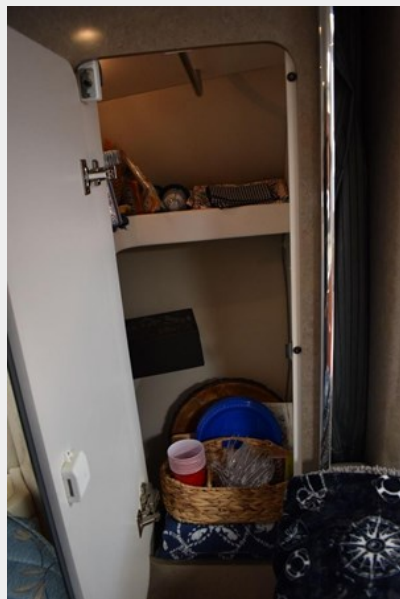
2005-formula-37-performance-cruiser-
power-9338939-20240415073244107-
1_XLARGE



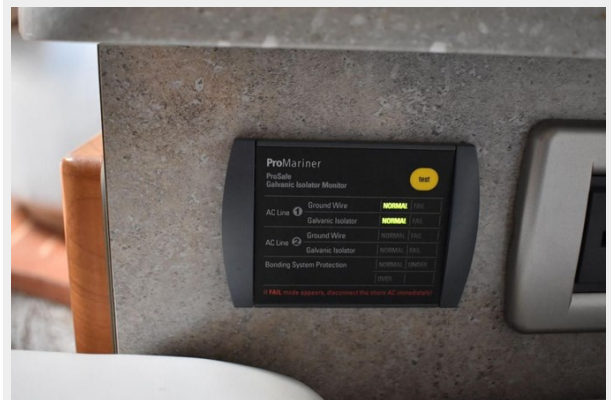
2005-formula-37-performance-cruiser-
power-9338939-20240415073249149-
1_XLARGE



2005-formula-37-performance-cruiser-
power-9338939-20240415073250161-
1_XLARGE



2005-formula-37-performance-cruiser-
power-9338939-20240415073248158-
1_XLARGE



**2005-formula-37-performance-cruiser-
power-9338939-20240415073304341-
1_XLARGE**



**2005-formula-37-performance-cruiser-
power-9338939-20240415073245178-
1_XLARGE**



**2005-formula-37-performance-cruiser-
power-9338939-20240415073258223-
1_XLARGE**



**2005-formula-37-performance-cruiser-
power-9338939-20240415073305375-
1_XLARGE**



**2005-formula-37-performance-cruiser-
power-9338939-20240415073306342-
1_XLARGE**



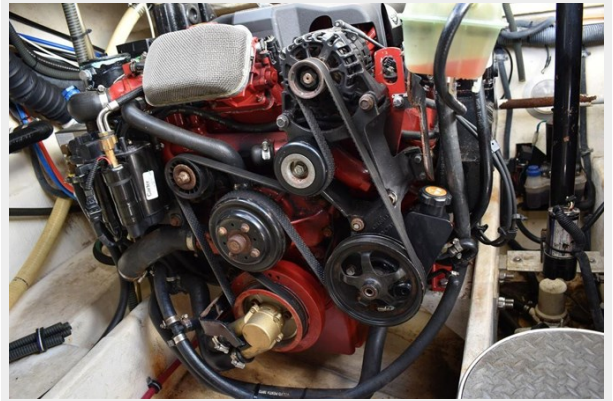
**2005-formula-37-performance-cruiser-
power-9338939-20240415073308385-
1_XLARGE**



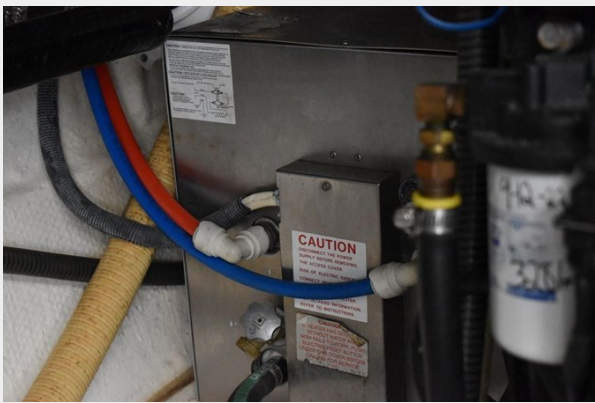
2005-formula-37-performance-cruiser-
power-9338939-20240415073315437-
1_XLARGE



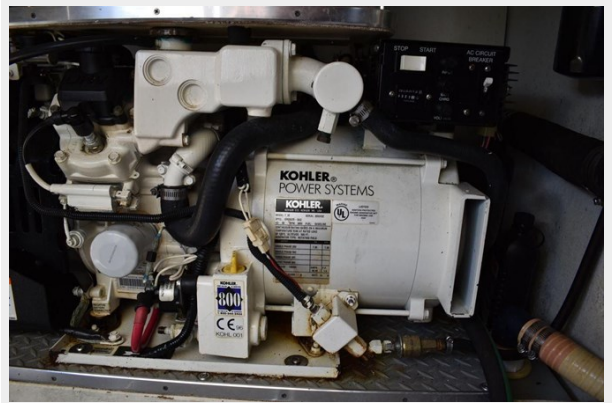
2005-formula-37-performance-cruiser-
power-9338939-20240415073307399-
1_XLARGE



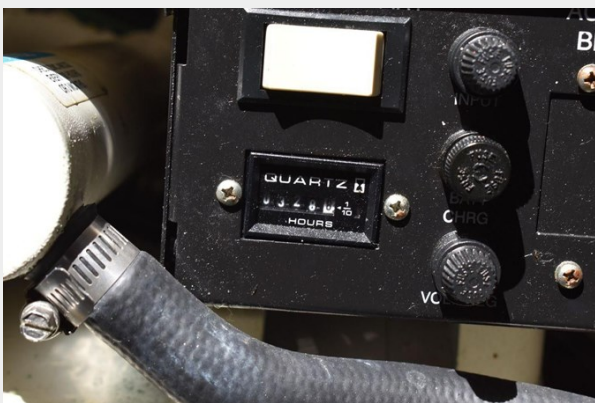
2005-formula-37-performance-cruiser-
power-9338939-20240415073310385-
1_XLARGE



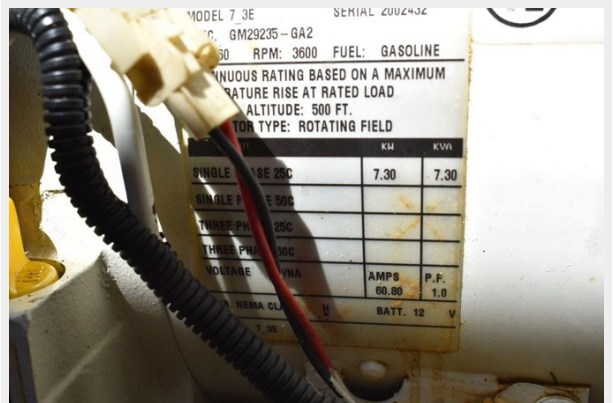
2005-formula-37-performance-cruiser-
power-9338939-20240415073309420-
1_XLARGE



2005-formula-37-performance-cruiser-
power-9338939-20240415073311391-
1_XLARGE



2005-formula-37-performance-cruiser-
power-9338939-20240415073313415-
1_XLARGE



**2005-formula-37-performance-cruiser-
power-9338939-20240415073322549-
1_XLARGE**



**2005-formula-37-performance-cruiser-
power-9338939-20240415073316475-
1_XLARGE**



**2005-formula-37-performance-cruiser-
power-9338939-20240415073319542-
1_XLARGE**



**2005-formula-37-performance-cruiser-
power-9338939-20240415073318530-
1_XLARGE**



**2005-formula-37-performance-cruiser-
power-9338939-20240415073317521-
1_XLARGE**



**2005-formula-37-performance-cruiser-
power-9338939-20240415073321545-
1_XLARGE**



2005-formula-37-performance-cruiser-power-9338939-20240415073320539-1_XLARGE



КОНТАКТЫ

Андрей Шестаков (Andrey Shestakov) – ведущий яхтенный брокер отдела продаж яхт и судов компании Shestakov Yacht Sales Inc. Официальный представитель Shestakov Yacht Sales Inc. для русскоговорящих клиентов в центральном офисе компании в Майами/Форт Лодердейл/Флорида/США.

Контактная информация

Email: andrey@shestakovyachtsales.com

Web: shestakovyachtsales.com

Телефоны

Краснодарский край: **+7(918)465-66-44**

США, Майами, Флорида: **+1(954)274-4435**

Время работы

Понедельник – Суббота: **9:00 - 21:00**
EDT

Воскресенье: **Закрыто**

Адрес



Harbour Towne Marina, 850 NE 3rd St,
STE 213, Dania, FL 33004