

## RELENTLESS — PURSUIT



**Builder:** PURSUIT

**Year Built:** 2009

**Model:** Sport Fisherman

**Price:** \$109,000 USD

**Location:** United States

**LOA:** 31' (9.45mm)

**Beam:** 10.5

**Min Draft:** 2' (0.61mm)

**Max Draft:** 2' 10" (0.86mm)

**Cruise Speed:** 28 Knots Kts. (32 MPH)

**Max Speed:** 36.5 Knots Kts. (42 MPH)

Our experienced yacht broker, Andrey Shestakov, will help you choose and buy a yacht that best suits your needs **Relentless — PURSUIT** from our catalogue. Presently, at Shestakov Yacht Sales Inc., we have a wide variety of yachts available on our sale's list. We also work in close contact with all the big yacht manufacturers from all over the world.

If you would like to buy a yacht **Relentless — PURSUIT** or would like help answering any questions concerning purchasing, selling or chartering a yacht, please call **+1(954)274-4435**

# TABLE OF CONTENTS

TABLE OF CONTENTS	2
SPECIFICATIONS	4
Overview	4
Basic Information	5
Dimensions	5
Speed, Capacities and Weight	5
Accommodations	5
Hull and Deck Information	5
Engine Information	6
PHOTOS	7
2_2009 31ft Pursuit S310 RELENTLESS	7
3_2009 31ft Pursuit S310 RELENTLESS	7
4_2009 31ft Pursuit S310 RELENTLESS	7
5_2009 31ft Pursuit S310 RELENTLESS	7
6_2009 31ft Pursuit S310 RELENTLESS	8
7_2009 31ft Pursuit S310 RELENTLESS	8
8_2009 31ft Pursuit S310 RELENTLESS	8
9_2009 31ft Pursuit S310 RELENTLESS	8
10_2009 31ft Pursuit S310 RELENTLESS	8
11_2009 31ft Pursuit S310 RELENTLESS	8
12_2009 31ft Pursuit S310 RELENTLESS	9
13_2009 31ft Pursuit S310 RELENTLESS	9
14_2009 31ft Pursuit S310 RELENTLESS	9
15_2009 31ft Pursuit S310 RELENTLESS	9
16_2009 31ft Pursuit S310 RELENTLESS	9
17_2009 31ft Pursuit S310 RELENTLESS	9
18_2009 31ft Pursuit S310 RELENTLESS	10
CONTACTS	11

---

Contact details	11
Telephones	11
Office hours	11
Address	11

---

# SPECIFICATIONS

---

## Overview

---

Presenting the versatile 2009 31' Pursuit S-310, a rugged offshore performer designed to conquer rough waters and high seas. Above deck, it showcases refined features, including an extended hardtop providing weather protection from the forward console seat to well aft of the helm. The bow seating area offers both comfort and functionality with recessed rails for security and ample storage beneath the benches. Enjoy sunbathing with the optional bow filler cushion or transform the area into a spacious dinette with the removable teak tabletop for waterfront dining. Inside the console, discover a convenient stand-up head compartment with locking storage for valuables. The stern seating arrangement features forward and aft-facing benches, ideal for casual conversations or fishing adventures. Additional amenities include a spacious insulated cooler concealed beneath the forward-facing seat and a stainless steel refrigerator tucked beneath the helm seating. Whether cruising or angling, the Pursuit S-310 delivers unparalleled comfort and performance for all your on-water pursuits.

### Notable Features:

- Twin Yamaha outboards @ 250 hp each - ONLY 600 hours!
- Garmin Radar
- Twin 12-inch Screens
- Garmin GPS
- Sonar Fish Finder
- Electric Head
- Cockpit Sink
- Live Bait Well
- 12V Refrigerator, Stainless Steel
- AM/FM Stereo
- Bow Thruster
- 3 x Brand NEW Gel Batteries
- 2 x Battery Chargers
- Two Fish Boxes with Macerators
- Anchor Winch
- VHF Radio
- Covers
- Table w/ Cushion at Bow
- 30 AMP 110 Plug-In
- Rear Video Camera
- Trim Tabs
- Front Spotlight
- Rear Cockpit Lights

**Turn key and ready to go!** Perfect for a trip to the Bahamas.

---

**\*Seller will include 6 fishing poles and a 4-person Switlik survival raft**

## Basic Information

---

**Category:** Sport Fisherman

**Model Year:** 2009

**Year Built:** 2009

**Country:** United States

## Dimensions

---

**LOA:** 31' (9.45mm)

**Beam:** 10.5

**Min Draft:** 2' (0.61mm)

**Max Draft:** 2' 10" (0.86mm)

## Speed, Capacities and Weight

---

**Cruise Speed:** 28 Knots Kts. (32 MPH)

**Cruise Speed Range:** 390

**Max Speed:** 36.5 Knots Kts. (42 MPH)

**Max Speed Range:** 328 Kts.

**Gross Tonnage:** 8500 Pounds

**Water Capacity:** 30 Gallons

**Holding Tank:** 18 Gal Gallons

**Fuel Capacity:** 250 Gal Gallons

## Accommodations

---

**Total Heads:** 1

## Hull and Deck Information

---

**Hull Material:** Fiberglass

**Deck Material:** Fiberglass

**Hull Configuration:** Deep Vee

**Hull Designer:** PURSUIT

**Interior Designer:** PURSUIT

---

## Engine Information

---

**Engines:** 2

**Manufacturer:** Yamaha

**Engine Type:** Outboard

**Fuel Type:** Gas/Petrol

# PHOTOS

2\_2009 31ft Pursuit S310 RELENTLESS



3\_2009 31ft Pursuit S310 RELENTLESS



4\_2009 31ft Pursuit S310 RELENTLESS



5\_2009 31ft Pursuit S310 RELENTLESS

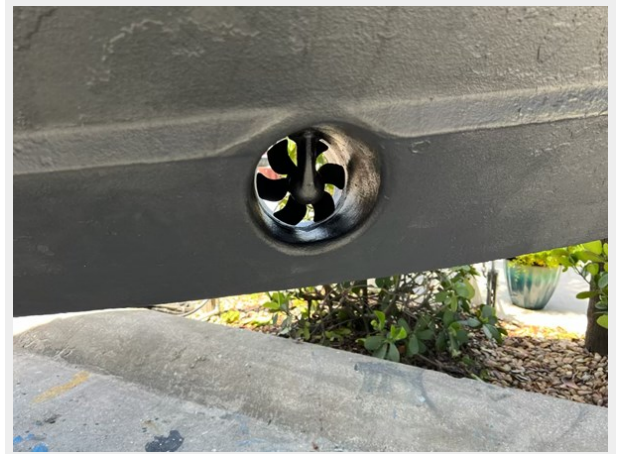




6\_2009 31ft Pursuit S310 RELENTLESS



7\_2009 31ft Pursuit S310 RELENTLESS



8\_2009 31ft Pursuit S310 RELENTLESS



9\_2009 31ft Pursuit S310 RELENTLESS



10\_2009 31ft Pursuit S310 RELENTLESS



11\_2009 31ft Pursuit S310 RELENTLESS





12\_2009 31ft Pursuit S310 RELENTLESS



13\_2009 31ft Pursuit S310 RELENTLESS



14\_2009 31ft Pursuit S310 RELENTLESS



15\_2009 31ft Pursuit S310 RELENTLESS



16\_2009 31ft Pursuit S310 RELENTLESS



17\_2009 31ft Pursuit S310 RELENTLESS



## 18\_2009 31ft Pursuit S310 RELENTLESS



---

# CONTACTS

---

Andrey Shestakov, leading yacht broker of the sales department of Shestakov Yacht Sales Inc. Shestakov Yacht Sales Inc., the official representative of the Miami/Fort Lauderdale FL headquarters.

---

## Contact details

---

Email: [andrey@shestakovyachtsales.com](mailto:andrey@shestakovyachtsales.com)

Web: [shestakovyachtsales.com/en/](http://shestakovyachtsales.com/en/)

---

## Telephones

---

USA: +1(954)274-4435

---

## Office hours

---

Monday – Saturday: **9:00 - 21:00** EDT

Sunday: **closed**

---

## Address

---



Harbour Towne Marina, 850 NE 3rd St,  
STE 213, Dania, FL 33004