

KIMBERLIE — IAG



Builder: IAG

Year Built: 2010

Model: Motor Yacht

Price: \$7,999,000 USD

Location: United States

LOA: 127' (38.71mm)

Beam: 26.5

Max Draft: 7' 8" (2.34mm)

Cruise Speed: 15 Knots Kts. (17 MPH)

Max Speed: 17 Knots Kts. (20 MPH)

Our experienced yacht broker, Andrey Shestakov, will help you choose and buy a yacht that best suits your needs **KIMBERLIE — IAG** from our catalogue. Presently, at Shestakov Yacht Sales Inc., we have a wide variety of yachts available on our sale's list. We also work in close contact with all the big yacht manufacturers from all over the world.

If you would like to buy a yacht **KIMBERLIE — IAG** or would like help answering any questions concerning purchasing, selling or chartering a yacht, please call **+1(954)274-4435**

TABLE OF CONTENTS

TABLE OF CONTENTS	2
SPECIFICATIONS	6
Overview	6
Basic Information	6
Dimensions	6
Speed, Capacities and Weight	6
Accommodations	6
Hull and Deck Information	6
Engine Information	6
PHOTOS	7
127_iag_kimberlie_profiles_01	7
127_iag_kimberlie_profiles_08	7
127_iag_kimberlie_profiles_09	7
127_iag_kimberlie_profiles_13	7
127_iag_kimberlie_salon_01	7
127_iag_kimberlie_salon_04	7
127_iag_kimberlie_salon_07	7
127_iag_kimberlie_sky_lounge_01	7
127_iag_kimberlie_sky_lounge_02	8
127_iag_kimberlie_sky_lounge_05	8
127_iag_kimberlie_sky_lounge_08	8
127_iag_kimberlie_sky_lounge_11	8
127_iag_kimberlie_pilothouse_03	8
127_iag_kimberlie_pilothouse_06	8
127_iag_kimberlie_bridge_deck_day_head_02	8
127_iag_kimberlie_bridge_deck_foyer_02	8
127_iag_kimberlie_bridge_deck_foyer_03	9
127_iag_kimberlie_bridge_deck_stew_pantry_01	9

127_iag_kimberlie_bridge_deck_stew_pantry_03	9
127_iag_kimberlie_day_head_02	9
127_iag_kimberlie_dining_01	9
127_iag_kimberlie_dining_03	9
127_iag_kimberlie_galley_03	9
127_iag_kimberlie_galley_05	9
127_iag_kimberlie_galley_06	10
127_iag_kimberlie_galley_08	10
127_iag_kimberlie_lower_foyer_01	10
127_iag_kimberlie_on_deck_master_stateroom_04	10
127_iag_kimberlie_on_deck_master_stateroom_05	10
127_iag_kimberlie_on_deck_master_stateroom_07	10
127_iag_kimberlie_on_deck_master_stateroom_08	10
127_iag_kimberlie_on_deck_master_stateroom_11	10
127_iag_kimberlie_on_deck_master_stateroom_12	11
127_iag_kimberlie_on_deck_master_stateroom_13	11
127_iag_kimberlie_on_deck_master_stateroom_head_02	11
127_iag_kimberlie_on_deck_master_stateroom_head_04	11
127_iag_kimberlie_on_deck_master_stateroom_head_05	11
127_iag_kimberlie_vip_stateroom_02	11
127_iag_kimberlie_vip_stateroom_head_02	11
127_iag_kimberlie_vip_stateroom_04	11
127_iag_kimberlie_vip_stateroom_head_04	12
127_iag_kimberlie_mid_port_guest_stateroom_02	12
127_iag_kimberlie_mid_port_guest_stateroom_04	12
127_iag_kimberlie_mid_port_guest_stateroom_head_03	12
127_iag_kimberlie_mid_port_guest_stateroom_head_04	12
127_iag_kimberlie_mid_starboard_guest_stateroom_03	12
127_iag_kimberlie_mid_starboard_guest_stateroom_04	12

127_iag_kimberlie_mid_starboard_guest_stateroom_head_03	12
127_iag_kimberlie_mid_starboard_guest_stateroom_head_04	13
127_iag_kimberlie_crew_06	13
127_iag_kimberlie_crew_08	13
127_iag_kimberlie_aft_port_guest_stateroom_02	13
127_iag_kimberlie_aft_port_guest_stateroom_03	13
127_iag_kimberlie_aft_port_guest_stateroom_head_02	13
127_iag_kimberlie_aft_port_guest_stateroom_head_04	13
127_iag_kimberlie_aft_port_guest_stateroom_head_05	13
127_iag_kimberlie_aft_starboard_guest_stateroom_02	14
127_iag_kimberlie_aft_starboard_guest_stateroom_03	14
127_iag_kimberlie_aft_starboard_guest_stateroom_head_02	14
127_iag_kimberlie_aft_starboard_guest_stateroom_head_03	14
127_iag_kimberlie_aft_starboard_guest_stateroom_head_04	14
127_iag_kimberlie_aft_starboard_guest_stateroom_head_05	14
127_iag_kimberlie_aft_deck_02	14
127_iag_kimberlie_aft_deck_03	14
127_iag_kimberlie_aft_deck_05	15
127_iag_kimberlie_aft_deck_09	15
127_iag_kimberlie_bow_01	15
127_iag_kimberlie_bow_12	15
127_iag_kimberlie_bow_17	15
127_iag_kimberlie_main_deck_foyer_02	15
127_iag_kimberlie_main_deck_foyer_03	15
127_iag_kimberlie_sky_lounge_aft_deck_02	15
127_iag_kimberlie_sky_lounge_aft_deck_03	16
127_iag_kimberlie_sky_lounge_aft_deck_05	16
127_iag_kimberlie_sun_deck_04	16
127_iag_kimberlie_sun_deck_06	16

127_iag_kimberlie_sun_deck_09	16
127_iag_kimberlie_sun_deck_15	16
127_iag_kimberlie_sun_deck_19	16
127_iag_kimberlie_sun_deck_20	16
127_iag_kimberlie_engine_room_01	17
127_iag_kimberlie_engine_room_08	17
127_iag_kimberlie_engine_room_14	17
127_iag_kimberlie_engine_room_20	17
127_iag_kimberlie_engine_room_21	17
CONTACTS	18
Contact details	18
Telephones	18
Office hours	18
Address	18

SPECIFICATIONS

Overview

KIMBERLIE represents a unique vessel that combines many yacht owners' wishes in a very manageable 127' size. Six staterooms, a large sky lounge, a captain's cabin next to the wheelhouse, aft garage, crew for eight, and less than 8' draft all make this an attractive yacht for both owners and charter clients. KIMBERLIE is a must-see for anyone looking at tri-decks in this size range.

She boasts close to 350 GTS and just had over \$500k in updates. She is charter-ready and Bahamian-flagged.

Basic Information

Category: Motor Yacht

Model Year: 2010

Year Built: 2010

Country: United States

Dimensions

LOA: 127' (38.71mm)

Beam: 26.5

Max Draft: 7' 8" (2.34mm)

Speed, Capacities and Weight

Cruise Speed: 15 Knots Kts. (17 MPH)

Cruise Speed Range: 2000

Max Speed: 17 Knots Kts. (20 MPH)

Water Capacity: 1321 Gallons

Fuel Capacity: 6000 Gal Gallons

Accommodations

Total Cabins: 6

Hull and Deck Information

Hull Material: Fiberglass

Engine Information

Engines: 2

Manufacturer: Caterpillar

Engine Type: Inboard

Fuel Type: Diesel

PHOTOS

127_iag_kimberlie_profiles_01



127_iag_kimberlie_profiles_08



127_iag_kimberlie_profiles_09



127_iag_kimberlie_profiles_13



127_iag_kimberlie_salon_01



127_iag_kimberlie_salon_04



127_iag_kimberlie_salon_07



127_iag_kimberlie_sky_lounge_01



127_iag_kimberlie_sky_lounge_02



127_iag_kimberlie_sky_lounge_05



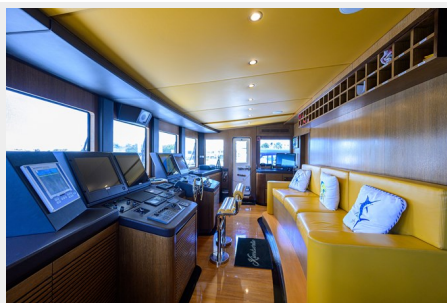
127_iag_kimberlie_sky_lounge_08



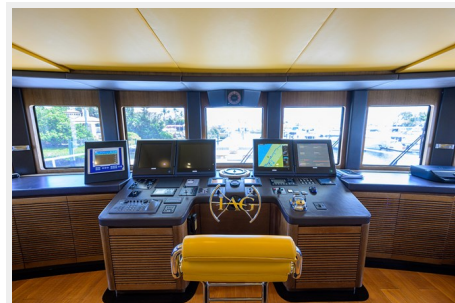
127_iag_kimberlie_sky_lounge_11



127_iag_kimberlie_pilothouse_03



127_iag_kimberlie_pilothouse_06



127_iag_kimberlie_bridge_deck_day_head_02



127_iag_kimberlie_bridge_deck_foyer_02



127_iag_kimberlie_bridge_deck_foyer_03



127_iag_kimberlie_bridge_deck_stew_pantry_01



127_iag_kimberlie_bridge_deck_stew_pantry_03



127_iag_kimberlie_day_head_02



127_iag_kimberlie_dining_01



127_iag_kimberlie_dining_03



127_iag_kimberlie_galley_03



127_iag_kimberlie_galley_05



127_iag_kimberlie_galley_06



127_iag_kimberlie_galley_08



127_iag_kimberlie_lower_foyer_01



127_iag_kimberlie_on_deck_master_stateroom_04



127_iag_kimberlie_on_deck_master_stateroom_05



127_iag_kimberlie_on_deck_master_stateroom_07



127_iag_kimberlie_on_deck_master_stateroom_08



127_iag_kimberlie_on_deck_master_stateroom_11



127_iag_kimberlie_on_deck_master_stateroom_12



127_iag_kimberlie_on_deck_master_stateroom_13



127_iag_kimberlie_on_deck_master_stateroom_head_02



127_iag_kimberlie_on_deck_master_stateroom_head_04



127_iag_kimberlie_on_deck_master_stateroom_head_05



127_iag_kimberlie_vip_stateroom_02



127_iag_kimberlie_vip_stateroom_head_02



127_iag_kimberlie_vip_stateroom_04



127_iag_kimberlie_vip_stateroom_head_04



127_iag_kimberlie_mid_port_guest_stateroom_02



127_iag_kimberlie_mid_port_guest_stateroom_04



127_iag_kimberlie_mid_port_guest_stateroom_head_03



127_iag_kimberlie_mid_port_guest_stateroom_head_04



127_iag_kimberlie_mid_starboard_guest_stateroom_03



127_iag_kimberlie_mid_starboard_guest_stateroom_04 127_iag_kimberlie_mid_starboard_guest_stateroom_head_03



127_iag_kimberlie_mid_starboard_guest_stateroom_head_04



127_iag_kimberlie_crew_06



127_iag_kimberlie_crew_08



127_iag_kimberlie_aft_port_guest_stateroom_02



127_iag_kimberlie_aft_port_guest_stateroom_03



127_iag_kimberlie_aft_port_guest_stateroom_head_02



127_iag_kimberlie_aft_port_guest_stateroom_head_04



127_iag_kimberlie_aft_port_guest_stateroom_head_05



127_iag_kimberlie_aft_starboard_guest_stateroom_02



127_iag_kimberlie_aft_starboard_guest_stateroom_03



127_iag_kimberlie_aft_starboard_guest_stateroom_head_02 127_iag_kimberlie_aft_starboard_guest_stateroom_head_03



127_iag_kimberlie_aft_starboard_guest_stateroom_head_04 127_iag_kimberlie_aft_starboard_guest_stateroom_head_05



127_iag_kimberlie_aft_deck_02



127_iag_kimberlie_aft_deck_03



127_iag_kimberlie_aft_deck_05



127_iag_kimberlie_aft_deck_09



127_iag_kimberlie_bow_01



127_iag_kimberlie_bow_12



127_iag_kimberlie_bow_17



127_iag_kimberlie_main_deck_foyer_02



127_iag_kimberlie_main_deck_foyer_03



127_iag_kimberlie_sky_lounge_aft_deck_02



127_iag_kimberlie_sky_lounge_aft_deck_03



127_iag_kimberlie_sky_lounge_aft_deck_05



127_iag_kimberlie_sun_deck_04



127_iag_kimberlie_sun_deck_06



127_iag_kimberlie_sun_deck_09



127_iag_kimberlie_sun_deck_15



127_iag_kimberlie_sun_deck_19



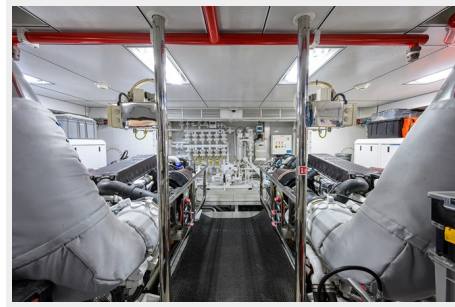
127_iag_kimberlie_sun_deck_20



127_iag_kimberlie_engine_room_01



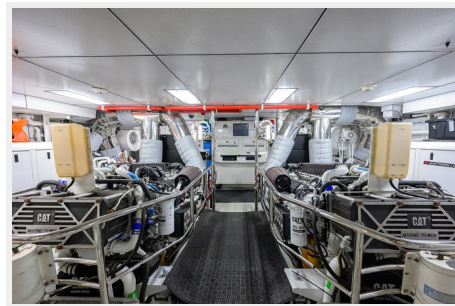
127_iag_kimberlie_engine_room_08



127_iag_kimberlie_engine_room_14



127_iag_kimberlie_engine_room_20



127_iag_kimberlie_engine_room_21



CONTACTS

Andrey Shestakov, leading yacht broker of the sales department of Shestakov Yacht Sales Inc. Shestakov Yacht Sales Inc., the official representative of the Miami/Fort Lauderdale FL headquarters.

Contact details

Email:
andrey@shestakovyachtsales.com

Web: shestakovyachtsales.com/en/

Telephones

USA: +1(954)274-4435

Office hours

Monday – Saturday: **9:00 - 21:00 EDT**

Sunday: **closed**

Address



Harbour Towne Marina, 850 NE 3rd St,
STE 213, Dania, FL 33004