

COMO I — HEESEN YACHTS



Builder: HEESEN YACHTS

Year Built: 2014

Model: Motor Yacht

Price: €24,500,000 EUR

Location: France

LOA: 163' 5" (49.8mm)

Beam: 29.52

Max Draft: 8' 6" (2.57mm)

Cruise Speed: 17.5 Knots Kts. (20 MPH)

Max Speed: 23.5 Knots Kts. (27 MPH)

Our experienced yacht broker, Andrey Shestakov, will help you choose and buy a yacht that best suits your needs **COMO I — HEESEN YACHTS** from our catalogue. Presently, at Shestakov Yacht Sales Inc., we have a wide variety of yachts available on our sale's list. We also work in close contact with all the big yacht manufacturers from all over the world.

If you would like to buy a yacht **COMO I — HEESEN YACHTS** or would like help answering any questions concerning purchasing, selling or chartering a yacht, please call **+1(954)274-4435**

TABLE OF CONTENTS

TABLE OF CONTENTS	2
SPECIFICATIONS	3
Overview	3
Basic Information	3
Dimensions	3
Speed, Capacities and Weight	3
Accommodations	4
Hull and Deck Information	4
Engine Information	4
PHOTOS	5
yacht-como-i-interior-09	6
yacht-como-i-interior-13	7
yacht-como-i-interior-14	7
yacht-como-i-interior-15	7
yacht-como-i-interior-19	8
CONTACTS	10
Contact details	10
Telephones	10
Office hours	10
Address	10

SPECIFICATIONS

Overview

- COMO I is an exceptional 50m superyacht offering generous exterior spaces for a yacht of her dimensions.
- With five large deck spaces, she was designed as the ultimate chill-out zone.
- Featuring a superb 70-square meter sundeck accommodating a covered bar and alfresco dining area for entertaining.
- Full beam deck for lounging and a forward-facing jacuzzi offering fabulous infinity views of the ocean.
- COMO I was totally repainted top to bottom with full hardware removal - Job completed November 2022.
- 10-year survey completed January 2024

Basic Information

Category: Motor Yacht

Model Year: 2014

Year Built: 2014

Country: France

Dimensions

LOA: 163' 5" (49.8mm)

Beam: 29.52

Max Draft: 8' 6" (2.57mm)

Speed, Capacities and Weight

Cruise Speed: 17.5 Knots Kts. (20 MPH)

Max Speed: 23.5 Knots Kts. (27 MPH)

Gross Tonnage: 497 Pounds

Water Capacity: 17200 Gallons

Fuel Capacity: 18681.19 Gal Gallons

Accommodations

Total Cabins: 6

Sleeps: 12

Crew Cabin: 10

Crew Berths: 5

Hull and Deck Information

Hull Material: Aluminum

Exterior Designer: Frank Laupman, Omega Architects

Interior Designer: Francesco Paszkowski Design

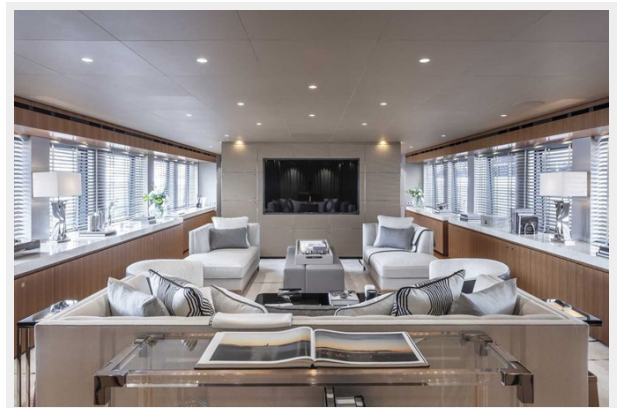
Engine Information

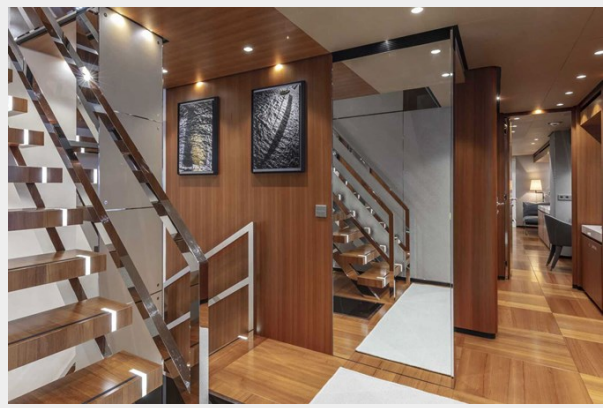
Engines: 2

Manufacturer: MTU

Fuel Type: Diesel

PHOTOS





yacht-como-i-interior-09





yacht-como-i-interior-13



yacht-como-i-interior-14



yacht-como-i-interior-15





yacht-como-i-interior-19





CONTACTS

Andrey Shestakov, leading yacht broker of the sales department of Shestakov Yacht Sales Inc. Shestakov Yacht Sales Inc., the official representative of the Miami/Fort Lauderdale FL headquarters.

Contact details

Email: andrey@shestakovyachtsales.com

Web: shestakovyachtsales.com/en/

Telephones

USA: +1(954)274-4435

Office hours

Monday – Saturday: **9:00 - 21:00** EDT

Sunday: **closed**

Address



Harbour Towne Marina, 850 NE 3rd St,
STE 213, Dania, FL 33004