

DROPLET — PRINCESS YACHTS



Builder: PRINCESS YACHTS

Year Built: 2022

Model: Motor Yacht

Price: \$3,950,000 USD

Location: United States

LOA: 72' (21.95mm)

Beam: 17.91

Max Draft: 5' 9" (1.73mm)

Cruise Speed: 27 Knots Kts. (31 MPH)

Max Speed: 33 Knots Kts. (38 MPH)

Our experienced yacht broker, Andrey Shestakov, will help you choose and buy a yacht that best suits your needs **DROPLET — PRINCESS YACHTS** from our catalogue. Presently, at **Shestakov Yacht Sales Inc.**, we have a wide variety of yachts available on our sale's list. We also work in close contact with all the big **yacht manufacturers** from all over the world.

If you would like to buy a yacht **DROPLET — PRINCESS YACHTS** or would like help answering any questions concerning purchasing, selling or chartering a yacht, please call **+1(954)274-4435**

TABLE OF CONTENTS

TABLE OF CONTENTS	2
SPECIFICATIONS	3
Overview	3
Basic Information	3
Dimensions	3
Speed, Capacities and Weight	4
Accommodations	4
Hull and Deck Information	4
Engine Information	4
PHOTOS	5
CONTACTS	9
Contact details	9
Telephones	9
Office hours	9
Address	9

SPECIFICATIONS

Overview

Finished to high standards throughout, DROPLET, the 2022 Y72 Princess design features are comparable to those of larger Y Princess Class yachts. Her spacious saloon has a sociable layout with a bar area and open plan galley, complemented by a multi-zone Naim audio system.

Forward on the lower deck of DROPLET, six guests can enjoy three beautifully appointed guest cabins filled with light from the full-length hull glazing. A dedicated staircase leads from the main deck to the full-beam owner's stateroom amidships, via a private lobby area connected to the saloon.

The sophisticated owner's stateroom is furnished with a sofa, dressing area and vanity desk wrapped and stitched in Livorno Stone leather for a contemporary finish. Luxurious surroundings exude from the owner's stateroom with architecturally inspired feature panels, fresh linen wall coverings and a bronze tint mirror to compliment the scheme. An additional en-suite cabin with two single beds is positioned aft for crew.

Basic Information

Category: Motor Yacht

Sub Category: Motor Yacht

Model Year: 2022

Year Built: 2022

Country: United States

Dimensions

LOA: 72' (21.95mm)

Beam: 17.91

Max Draft: 5' 9" (1.73mm)

Speed, Capacities and Weight

Cruise Speed: 27 Knots Kts. (31 MPH) **Cruise Speed Range:** 259

Max Speed: 33 Knots Kts. (38 MPH) **Water Capacity:** 731 Gallons

Fuel Capacity: 1189 Gal Gallons

Accommodations

Total Cabins: 5

Hull and Deck Information

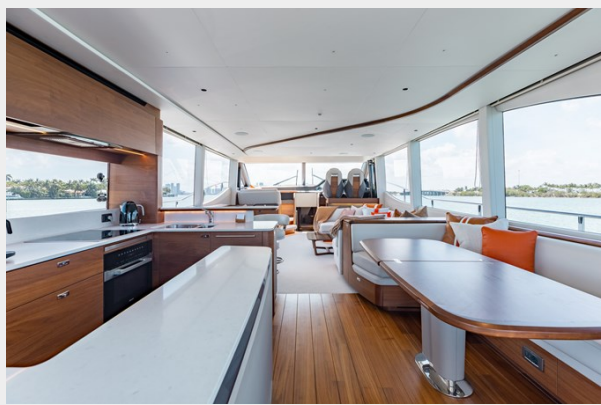
Hull Material: Fiberglass

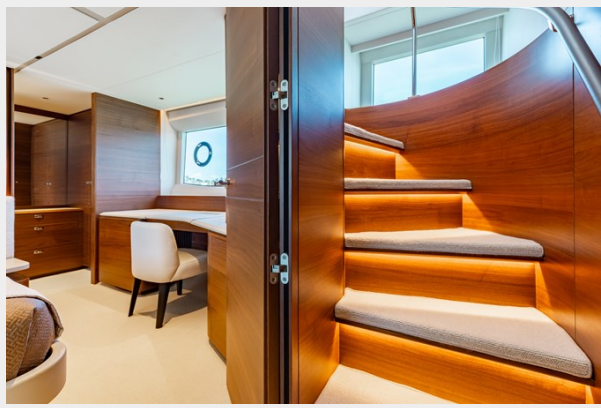
Engine Information

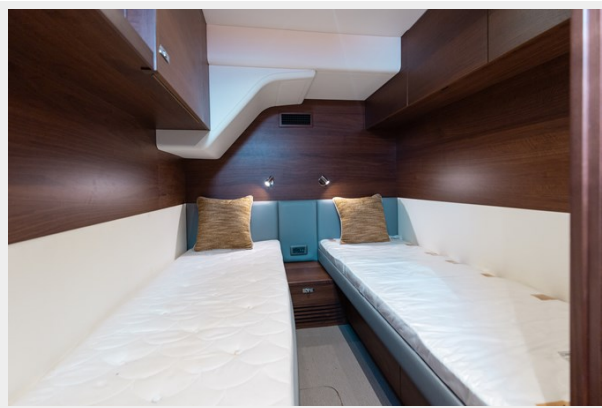
Engines: 2

Manufacturer: MAN

PHOTOS









CONTACTS

Andrey Shestakov, leading yacht broker of the sales department of Shestakov Yacht Sales Inc. Shestakov Yacht Sales Inc., the official representative of the Miami/Fort Lauderdale FL headquarters.

Contact details

Email: **andrey@shestakovyachtsales.com**

Web: shestakovyachtsales.com/en/

Telephones

USA: **+1(954)274-4435**

Office hours

Monday – Saturday: **9:00 - 21:00** EDT

Sunday: **closed**

Address



Harbour Towne Marina, 850 NE 3rd St, STE 213, Dania, FL 33004