

ATALANTE — CUSTOM



Builder: CUSTOM

Year Built: 2009

Model: Motorsailor

Price: €700,000 EUR

Location: Turkey

LOA: 78' 9" (24mm)

Beam: 22.3

Max Draft: 7' 7" (2.3mm)

Our experienced yacht broker, Andrey Shestakov, will help you choose and buy a yacht that best suits your needs **ATALANTE — CUSTOM** from our catalogue. Presently, at Shestakov Yacht Sales Inc., we have a wide variety of yachts available on our sale's list. We also work in close contact with all the big yacht manufacturers from all over the world.

If you would like to buy a yacht **ATALANTE — CUSTOM** or would like help answering any questions concerning purchasing, selling or chartering a yacht, please call **+1(954)274-4435**

TABLE OF CONTENTS

TABLE OF CONTENTS	2
SPECIFICATIONS	4
Overview	4
Basic Information	4
Dimensions	4
Speed, Capacities and Weight	4
Accommodations	5
Hull and Deck Information	5
Engine Information	5
PHOTOS	6
cat(2)	6
cat(3)	6
cat(4)	6
cat(5)	6
cat(6)	6
cat(7)	6
cat(8)	7
cat(9)	7
cat(10)	7
cat(11)	7
cat(12)	7
cat(13)	7
cat(14)	8
cat(15)	8
cat(16)	8
CONTACTS	9
Contact details	9
Telephones	9

Office hours

9

Address

9

SPECIFICATIONS

Overview

Atalante was meticulously constructed in the year 2009, boasting a length of 24 meters and a beam of 6.50 meters.

Our yacht features 4 cabins, comprising 2 Double Cabins and 2 Twin Cabins, each exuding a distinct blend of elegance and comfort. Each cabin is equipped with its own shower, WC facilities, and climate control, ensuring a sanctuary of relaxation throughout your journey. Powered by 2 x 235 Hp IVECO engines and complemented by 2 x 17.5 kVA ONAN generators, our vessel stands as a testament to both reliability and performance on the seas.

Adequate provisions are made for all guests, including ample sunbathing mattresses, chairs, and service sets, promising an indulgent and carefree experience under the sun. With a cruising capability of 10 nautical miles, our vessel encapsulates the essence of comfort, luxury, and tranquility, offering an unparalleled blue voyage experience to all who step aboard.

Basic Information

Category: Motorsailor

Model Year: 2009

Year Built: 2009

Country: Turkey

Dimensions

LOA: 78' 9" (24mm)

Beam: 22.3

Max Draft: 7' 7" (2.3mm)

Speed, Capacities and Weight

Water Capacity: 5500 Gallons

Fuel Capacity: 792.52 Gal Gallons

Accommodations

Total Cabins: 4

Total Berths: 8

Sleeps: 8

Total Heads: 4

Crew Cabin: 4

Crew Berths: 4

Crew Heads: 2

Hull and Deck Information

Hull Material: Wood

Deck Material: Teak

Engine Information

Engines: 2

Manufacturer: Iveco

Engine Type: Inboard

PHOTOS

cat(2)



cat(3)



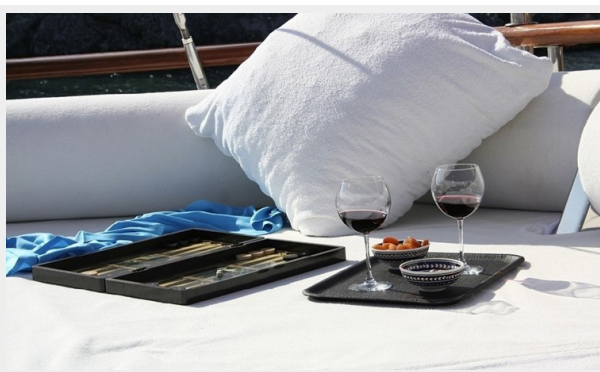
cat(4)



cat(5)



cat(6)



cat(7)



cat(8)



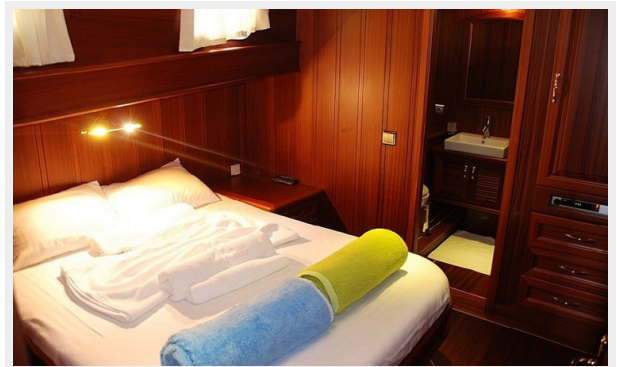
cat(9)



cat(10)



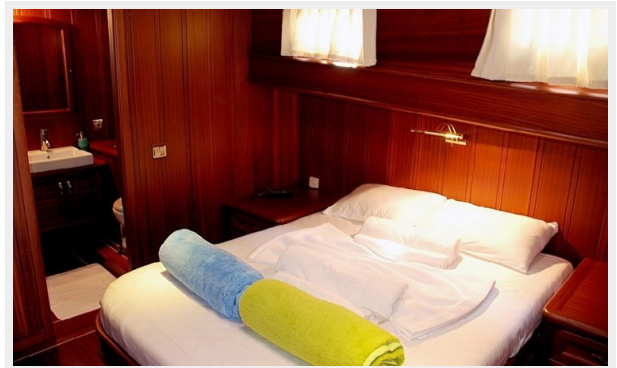
cat(11)



cat(12)



cat(13)



cat(14)



cat(15)



cat(16)



CONTACTS

Andrey Shestakov, leading yacht broker of the sales department of Shestakov Yacht Sales Inc. Shestakov Yacht Sales Inc., the official representative of the Miami/Fort Lauderdale FL headquarters.

Contact details

Email: andrey@shestakovyachtsales.com

Web: shestakovyachtsales.com/en/

Telephones

USA: +1(954)274-4435

Office hours

Monday – Saturday: **9:00 - 21:00** EDT

Sunday: **closed**

Address



Harbour Towne Marina, 850 NE 3rd St,
STE 213, Dania, FL 33004