

TOOT — LITTLE HARBOR



Builder: LITTLE HARBOR

Year Built: 1988

Model: Sloop

Price: \$260,000 USD

Location: United States

LOA: 46' (14.02mm)

Beam: 13.66

Min Draft: 5' 3" (1.58mm)

Max Draft: 11' (3.35mm)

Our experienced yacht broker, Andrey Shestakov, will help you choose and buy a yacht that best suits your needs **TOOT — LITTLE HARBOR** from our catalogue. Presently, at Shestakov Yacht Sales Inc., we have a wide variety of yachts available on our sale's list. We also work in close contact with all the big yacht manufacturers from all over the world.

If you would like to buy a yacht **TOOT — LITTLE HARBOR** or would like help answering any questions concerning purchasing, selling or chartering a yacht, please call **+1(954)274-4435**

TABLE OF CONTENTS

TABLE OF CONTENTS	2
SPECIFICATIONS	4
Overview	4
Basic Information	4
Dimensions	4
Speed, Capacities and Weight	4
Accommodations	4
Hull and Deck Information	4
Engine Information	5
PHOTOS	6
At Dock	6
Aft Deck	6
Helm	6
Helm and Cockpit	6
Cockpit and Dodger	7
Dodger	7
Saloon	7
Helm with Wheelcover	7
Saloon	8
Settee	8
Nav Station	8
Saloon TV	8
Nav Station	9
Galley Stove	9
Freezer	9
Fridge	9
V-berth	9
V-berth	9

V- berth	10
Galley	10
Master	10
Master	10
Master	10
Master	10
Ensuite	11
Ensuite Shower	11
028 Engine	11
029 Engine	11
031 Engine Hours	11
030 Gearbox	11
032 Generator Hours	12
033 Foredeck	12
034 Forward Locker	12
035 Foredeck looking aft	12
CONTACTS	13
Contact details	13
Telephones	13
Office hours	13
Address	13

SPECIFICATIONS

Overview

TOOT is a 46' (14.02m) yacht, built by Little Harbor and delivered in 1988. This vessel sleeps up to 6 guests in 2 staterooms.

Basic Information

Category: Sloop

Model Year: 1988

Year Built: 1988

Country: United States

Dimensions

LOA: 46' (14.02mm)

Beam: 13.66

Min Draft: 5' 3" (1.58mm)

Max Draft: 11' (3.35mm)

Speed, Capacities and Weight

Water Capacity: 140 Gallons

Holding Tank: 62 Gal Gallons

Fuel Capacity: 140 Gal Gallons

Accommodations

Total Cabins: 2

Sleeps: 6

Total Heads: 2

Hull and Deck Information

Hull Material: Fiberglass

Hull Configuration: Centerboard

Hull Color: Flag Blue

Hull Designer: Ted Hood

Engine Information

Engines: 1

Manufacturer: Yanmar

Engine Type: Inboard

Fuel Type: Diesel

PHOTOS

At Dock



Aft Deck



Helm



Helm and Cockpit



Cockpit and Dodger



Dodger



Saloon

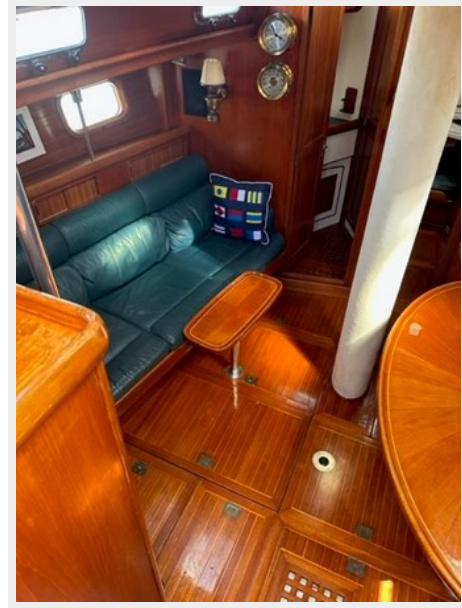
Helm with Wheelcover



Saloon



Settee



Nav Station



Saloon TV



Nav Station



Galley Stove



Freezer



Fridge



V-berth



V-berth



V- berth



Galley



Master



Master



Master



Master



Ensuite



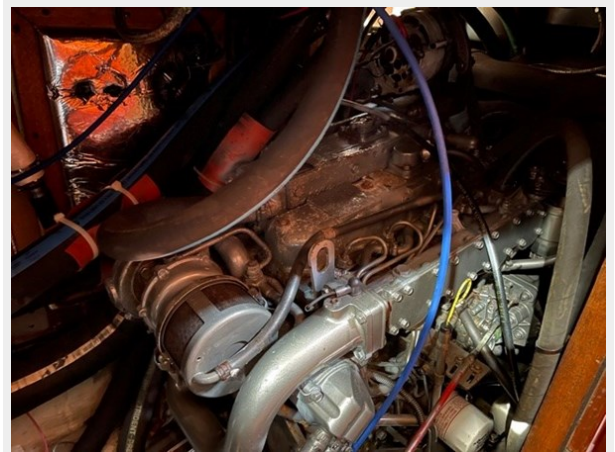
Ensuite Shower



028 Engine

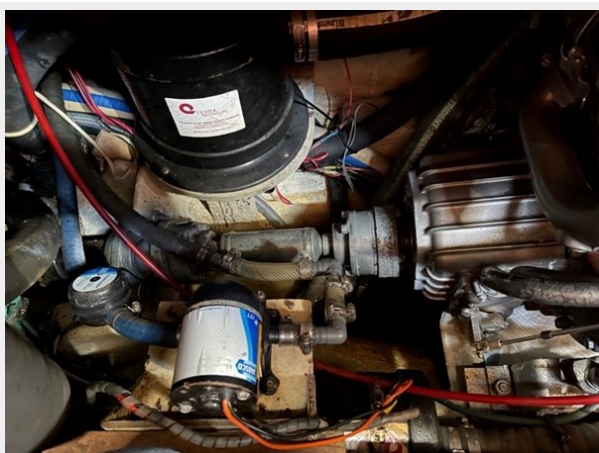


029 Engine



031 Engine Hours

030 Gearbox



032 Generator Hours



033 Foredeck



034 Forward Locker



035 Foredeck looking aft



CONTACTS

Andrey Shestakov, leading yacht broker of the sales department of Shestakov Yacht Sales Inc. Shestakov Yacht Sales Inc., the official representative of the Miami/Fort Lauderdale FL headquarters.

Contact details

Email: andrey@shestakovyachtsales.com

Web: shestakovyachtsales.com/en/

Telephones

USA: +1(954)274-4435

Office hours

Monday – Saturday: **9:00 - 21:00** EDT

Sunday: **closed**

Address



Harbour Towne Marina, 850 NE 3rd St,
STE 213, Dania, FL 33004